

Product datasheet for **RC204078**

Transcription factor 25 (TCF25) (NM_014972) Human Tagged ORF Clone

Product data:

Product Type:	Expression Plasmids
Product Name:	Transcription factor 25 (TCF25) (NM_014972) Human Tagged ORF Clone
Tag:	Myc-DDK
Symbol:	Transcription factor 25
Synonyms:	FKSG26; hKIAA1049; Hulp1; NULP1; PRO2620
Mammalian Cell Selection:	Neomycin
Vector:	pCMV6-Entry (PS100001)
E. coli Selection:	Kanamycin (25 ug/mL)



[View online »](#)

**ORF Nucleotide
Sequence:**

>RC204078 ORF sequence
 Red=Cloning site Blue=ORF Green=Tags(s)

TTTTGTAATACGACTCACTATAGGGCGGCCGGGAATTCGTCGACTGGATCCGGTACCGAGGAGATCTGCC
 GCC**GCGATCGCC**

ATGTCGCGCCGGGCCCTCCGGAGGCTGAGGGGGAAACAGCGCGGCCAGGAGCCCCCTCGGGCCGGCGCCT
 TGCATTTTCGATCTCCGTGATGACGATGACGCGGAAGAAGAAGGGCCCAAGCGGGAGCTTGGTGTCCGGCC
 TCCCGGGGGCGCAGGGAAGGAGGGCGTCCGAGTCAACAACCGCTTCGAGCTGATAAACATTGACGATCTT
 GAGGATGACCCTGTGGTGAACGGGGAGAGGTCTGGCTGTGCGCTCACAGACGCTGTGGCACCAGGGAACA
 AAGGAAGGGGTCAGCGTGGAAACACAGAGAGCAAGACGGATGGAGATGACACCGAGACAGTGCCTCAGA
 GCAGTCTCATGCAAGTGGCAAACCCGGAAGAAGAAAAACAGAAAAACAAGAAAAGCAGCACGGGA
 GAAGCATCGGAAAACGGACTAGAAGATATCGATCGCATCTAGAGAGGATTGAGGACAGCACTGGTTGA
 ACCGTCCCGGCCAGCTCCCTGAGCTCCAGGAAGCACGTTCTCTACGTGGAGCACAGACACTTGAATCC
 AGACACAGAACTGAAAAGGTATTTTGGTGCCCGGCAATCCTGGGGGAGCAAAGGCCACGGCAGAGACAA
 CGTGTGTACCCCAAGTGCACATGGCTGACCACCCCTAAAAGCACCTGGCCCCGCTACAGCAAACAGGTC
 TGTCCATGCGGCTGCTGGAATCAAAAAAGGCCTCTCCTTCTTTGCGTTTGGACAGTGGAGGATACCA
 GCAGGCTCAGACAAGTTCTGGTGGCCGTGGAGTCTATGGAGCCGAACAACATCGTGGTTCTGCTCCAG
 ACGAGCCCTTACCACGTTGACTCACTCTGCAGCTCAGCGATGCCTGCCGCTTTCAAGAGGATCAGGAGA
 TGGCTCGAGACCTCGTAGAGAGAGCGCTGTACAGCATGGAATGTGCGTTCACCCCTGTTCAGTCTCAC
 CAGTGGGGCTGCCGGCTGGATTACCGCAGACCCGAGAACAGGAGCTTCTACCTGGCCCTCTACAAGCAG
 ATGAGCTTCTGGAGAAGCGAGGCTGCCCGCGCACGGCGCTGGAGTACTGCAAGCTATCCTGAGTCTCG
 AGCCGGATGAGGACCCCTCTGCATGCTGCTGCTCATCGACCACCTGGCCTTGGGGCCCGGAACACTCGA
 GTACCTGATCCGCCTCTCCAGGAGTGGGAGGCTCATCGAACCTGTCCAGCTCCCTAATTTTGCCTTC
 TCTGTTCCACTGGCGTATTTCTGCTGAGCCAGCAGACAGACCTCCCTGAGTGTGAGCAGAGCTCTGCCA
 GGCAGAAGGCCTCTCCTGATACAGCAGGCGCTCACCATGTTCCCTGGAGTCTCCTGCCCTGCTCGA
 GTCTTGACAGTGTGCGGCCGACGCCAGCGTTTCCAGTACCGCTTCTTTGGACCAATGCTGAAATAAGC
 CAGCCCCCTGCCCTGAGCCAGCTGGTGAACCTGTACCTTGGGAGGTACACTTTCTCTGAAAGAGCCCG
 CCACCATGAGCTGGCTGGAGGAGAACGTCCACGAGTTCTGCAAGCAGTGGACGCCGGGGACCCAGCCGT
 GGAAGCCTGTGAGAACCGCGGAAGGTGCTCTACCAGCGTGCACCCAGGAATATCCACCGCCATGTGATC
 CTCTCTGAGATCAAGGAAGCCGTGCTGCCCTGCCCCGGACGTGACCACGCAGTCTGTGATGGGGTTTG
 ATCCTCTGCCTCCTTCGACACAATCTACTCCTACGTACGGCCAGAGAGGCTAAGTCTATCAGCCATGG
 AAACACCATTTGCTCTCTTCCGGTCACTGTTGCCAAACTATACCATGGAGGGGGAGAGCCCCGAGGAA
 GGAGTGGCTGGGGTCTGAACCGCAACAGGGCCTGAACAGGCTGATGCTGGCTGTGCGCGACATGATGG
 CCAACTCCACCTCAACGACCTGGAGGCGCCGACGAGGACGACGCTGAGGGGGAGGGGGAGTGGGAC

ACGCGTACGCGGCCGCTCGAGCAGAACTCATCTCAGAAGAGGATCTGGCAGCAAATGATATCCTGGATT
 ACAAGGATGACGACGATAAGGTTTAA

Protein Sequence: >RC204078 protein sequence
Red=Cloning site Green=Tags(s)

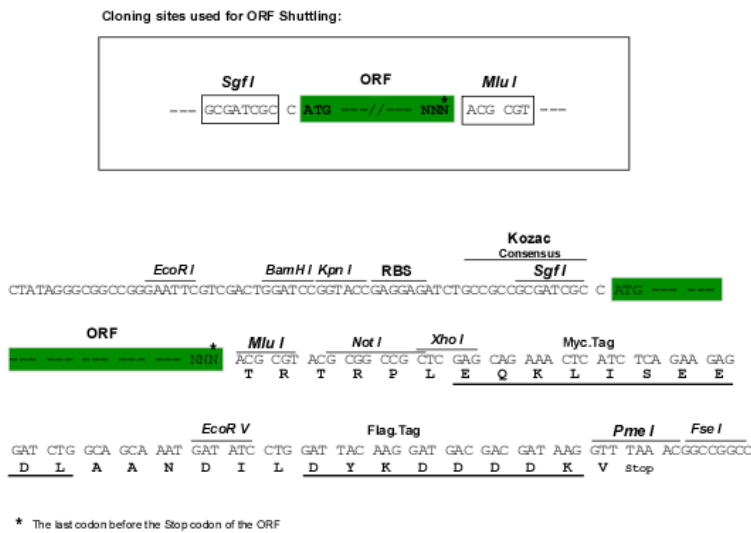
```
MSRRALRRLRGEQRGQEPLGPGALHFDLRDDDDAEEEGPKRELGVRRPGGAGKEGVRVNNRFELINIDDL
EDDPVVNGERSGCALTDAVAPGNKGRGQRGNTESKTDGDDTETVPSEQSHASGKLRKKKKKQKNKKSSTG
EASENGLEDIDRILERIEDSTGLNRPGAPLSSRKHVLVEHRHLNPDTELKRYFGARAILGEQRPRQRQ
RVYPKCTWLTTPKSTWPRYSKPGLSMRLLLESKKGLSFFAFEHSEYQQAQHKFLVAVESMEPNNIIVLLQ
TSPYHVDLLQLSDACRFQEDQEMARDLVERALYSMECAFHPLFSLTSGACRLDYRRPENRSFYALALYKQ
MSFLEKRGCPRTALEYCKLILSLEPDEDPLCMLLLIDHLALRARNEYELIRLFQWEAHRNLSQLPNFAF
SVPLAYFLLSQQTDLPECEQSSARQKASLLIQQALTMFPGVLLPLESVSRPDASVSSHRFFGPNAEIS
QPPALSQLVNLYLGRSHFLWKEPATMSWLEENVHEVLQAVDAGDPAVEACENRRKVLVQRAPRNIHRHVI
LSEIKEAVALPPDVTTQSVMGFDPLPPSDTIYSYVRPERLSPISHGNTIALFFRSLLPNYTMGERPEE
GVAGGLNRNQGLNRLMLAVRDMANFHLNDLEAPHEDDAEGEGEWD
```

TRTRPLEQKLISEEDLAANDILDYKDDDDKV

Chromatograms: https://cdn.origene.com/chromatograms/mk6254_c04.zip

Restriction Sites: SgfI-MluI

Cloning Scheme:



ACCN: NM_014972

ORF Size: 2028 bp

OTI Disclaimer: The molecular sequence of this clone aligns with the gene accession number as a point of reference only. However, individual transcript sequences of the same gene can differ through naturally occurring variations (e.g. polymorphisms), each with its own valid existence. This clone is substantially in agreement with the reference, but a complete review of all prevailing variants is recommended prior to use. [More info](#)

OTI Annotation: This clone was engineered to express the complete ORF with an expression tag. Expression varies depending on the nature of the gene.

Components: The ORF clone is ion-exchange column purified and shipped in a 2D barcoded Matrix tube containing 10ug of transfection-ready, dried plasmid DNA (reconstitute with 100 ul of water).

Reconstitution Method:

1. Centrifuge at 5,000xg for 5min.
2. Carefully open the tube and add 100ul of sterile water to dissolve the DNA.
3. Close the tube and incubate for 10 minutes at room temperature.
4. Briefly vortex the tube and then do a quick spin (less than 5000xg) to concentrate the liquid at the bottom.
5. Store the suspended plasmid at -20°C. The DNA is stable for at least one year from date of shipping when stored at -20°C.

RefSeq: [NM_014972.3](#)

RefSeq Size: 2286 bp

RefSeq ORF: 2031 bp

Locus ID: 22980

UniProt ID: [Q9BQ70](#)

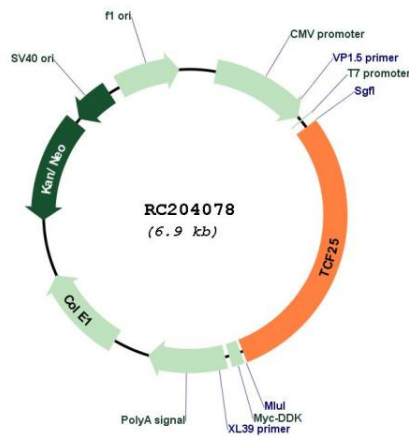
Cytogenetics: 16q24.3

Domains: DUF654

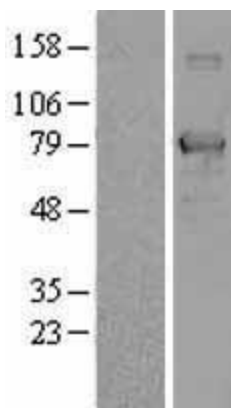
MW: 76.7 kDa

Gene Summary: TCF25 is a member of the basic helix-loop-helix (bHLH) family of transcription factors that are important in embryonic development (Steen and Lindholm, 2008 [PubMed 18068114]). [supplied by OMIM, Sep 2008]

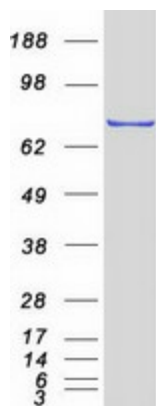
Product images:



Circular map for RC204078



Western blot validation of overexpression lysate (Cat# [LY414869]) using anti-DDK antibody (Cat# [TA50011-100]). Left: Cell lysates from untransfected HEK293T cells; Right: Cell lysates from HEK293T cells transfected with RC204078 using transfection reagent MegaTran 2.0 (Cat# [TT210002]).



Coomassie blue staining of purified TCF25 protein (Cat# [TP304078]). The protein was produced from HEK293T cells transfected with TCF25 cDNA clone (Cat# RC204078) using MegaTran 2.0 (Cat# [TT210002]).