

## Product datasheet for **RC204076**

### **C11orf49 (NM\_001003677) Human Tagged ORF Clone**

#### Product data:

Product Type:	Expression Plasmids
Product Name:	C11orf49 (NM_001003677) Human Tagged ORF Clone
Tag:	Myc-DDK
Symbol:	C11orf49
Mammalian Cell Selection:	Neomycin
Vector:	pCMV6-Entry (PS100001)
E. coli Selection:	Kanamycin (25 ug/mL)
ORF Nucleotide Sequence:	>RC204076 ORF sequence Red=Cloning site Blue=ORF Green=Tags(s)

TTTTGTAATACGACTCACTATAGGGCGGCCGGAATTCGTCGACTGGATCCGGTACCGAGGAGATCTGCC  
GCC**CGATCGCC**

ATGCTGAGTCCGGAGCGCCTAGCCCTACCGACTACGAGTATCTGGCTCAGCGACATGTCCTCACCTACA  
TGGAGGATGCAGTGTGCCAGCTGCTAGAAAACAGGGAAGATATTAGCCAATATGGAATTGCCAGGTTCTT  
CACTGAATATTTAACAGTGTATGCCAGGGAACACACATTCTCTTTCGAGAATTCAGCTTCGTCCAAGCC  
ACCCCCACAATAGGGTATCATTTTTACGGCCCTTCTGGAGATGCTTCCGAACTGTGGGCAAAAATGGCC  
ATTTGCTGACCATGAAAGAATATCACTGTTTGTGCAATTACTGCAATTACTGTCCTGATTTCCCGCTGGAGCTCA  
TCAGAAAAGCAGCCAGGATTGTGCTCATGGACGATGCCATGGACTGCTTGATGTCTTTTTTCAGATTTCTC  
TTTGCCTTCCAGATCCAGTTTTACTACTCAGAATTCCTGGACAGTGTGGCTGCCATCTATGAGGACCTGC  
TGTGAGGCAAGAACCCCAACACAGTGATTGTGCCGACGTCGTCCAGTGGGACGACCCGCCAACGACCTGC  
CTTGGGCGGGGCCGACGCTGGAGGGCGTGGAGGCGTGTCTACCAAGTGTCTGAAAACTGTGT  
GATCGGCACAAGTACAGCTGCCACCCAGCACTTGTCAAAGAGGCCCTCAGCAATGTTGAGACTGA  
CCTTCTATGGATTCCTCATGGCTCTCTCAAAGCACCGTGAATCAACCAAGCCCTCGGAGCTTTGCCTGA  
CAAGGGGGATCTGATGCACGACCCAGCAATGGATGAAGAGCTGGAACGGTCTTCTTCCCTTCTCAGG  
CTGGCCCAGTCCAGGCTGGTCAACTCGGTACAGCCAGTCCAGAGGCCAGTTGCCTGCCTTCCCGGA  
CCCTCCCGGGTTGGCTCTCCCTGGAGACCTCTCCATCATTCCCGAAAAGTGGATGGAGAGAGTATGG  
CTCCACTGAAGAGACAGACGAGTCCGAGACT

**ACGCGT**ACGCGGCCGCTCGAGCAGAACTCATCTCAGAAGAGGATCTGGCAGCAAATGATATCCTGGATT  
ACAAGGATGACGACGATAAGGTTTAA



[View online »](#)

**Protein Sequence:** >RC204076 protein sequence  
Red=Cloning site Green=Tags(s)

MLSPERLALPDYEYLAQRHVLT YMEDAVCQLENREDISQYGIARFFTEYFNVCQGTHILFREFSFVQA  
 TPHNRVSFLRAFWRFCRTVVGKNGDLLTMKEYHCLLQLLCPDFPLELTQKAARIVLMDDAMDCLMSFSDFL  
 FAFQIQFYSEFLDSVAAIYEDLLSGKNPNTVI VPTSSSGQHRQRPALGGAGTLEGVEASLFYQCLENLC  
 DRHKYSCPPPALVKEALSNVQRLTFYGFMLALSKHRGINQALGALPDKGDLMHDPAMDEELERLLLPFFR  
 LAQVPLVNSVTASPEASCLPSRTPPRVGSPWRPLHHSRKYVDGESDGSSTEETDESET

TRTRPLEQKLISEEDLAANDILDYKDDDDKV

**Chromatograms:** [https://cdn.origene.com/chromatograms/mk6568\\_f07.zip](https://cdn.origene.com/chromatograms/mk6568_f07.zip)

**Restriction Sites:** SgfI-MluI

**Cloning Scheme:**



**ACCN:** NM\_001003677

**ORF Size:** 1011 bp

**OTI Disclaimer:** The molecular sequence of this clone aligns with the gene accession number as a point of reference only. However, individual transcript sequences of the same gene can differ through naturally occurring variations (e.g. polymorphisms), each with its own valid existence. This clone is substantially in agreement with the reference, but a complete review of all prevailing variants is recommended prior to use. [More info](#)

**OTI Annotation:** This clone was engineered to express the complete ORF with an expression tag. Expression varies depending on the nature of the gene.

**Components:** The ORF clone is ion-exchange column purified and shipped in a 2D barcoded Matrix tube containing 10ug of transfection-ready, dried plasmid DNA (reconstitute with 100 ul of water).

**Reconstitution Method:**

1. Centrifuge at 5,000xg for 5min.
2. Carefully open the tube and add 100ul of sterile water to dissolve the DNA.
3. Close the tube and incubate for 10 minutes at room temperature.
4. Briefly vortex the tube and then do a quick spin (less than 5000xg) to concentrate the liquid at the bottom.
5. Store the suspended plasmid at -20°C. The DNA is stable for at least one year from date of shipping when stored at -20°C.

**RefSeq:** [NM\\_001003677.3](#)

**RefSeq Size:** 1764 bp

**RefSeq ORF:** 1014 bp

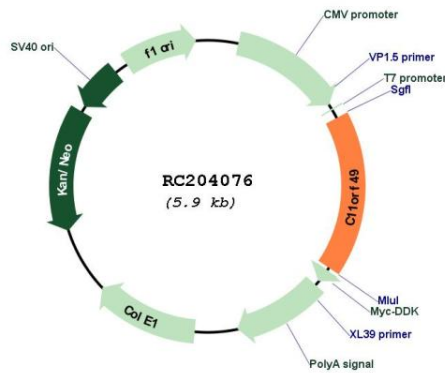
**Locus ID:** 79096

**UniProt ID:** [Q9H6J7](#)

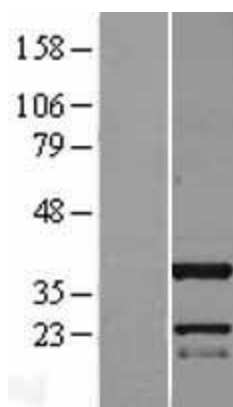
**Cytogenetics:** 11p11.2

**MW:** 38.1 kDa

**Product images:**



Circular map for RC204076



Western blot validation of overexpression lysate (Cat# [LY424097]) using anti-DDK antibody (Cat# [TA50011-100]). Left: Cell lysates from untransfected HEK293T cells; Right: Cell lysates from HEK293T cells transfected with RC204076 using transfection reagent MegaTran 2.0 (Cat# [TT210002]).