

Product datasheet for **RC204070**

SFT2D1 (NM_145169) Human Tagged ORF Clone

Product data:

Product Type: Expression Plasmids
Product Name: SFT2D1 (NM_145169) Human Tagged ORF Clone
Tag: Myc-DDK
Symbol: SFT2D1
Synonyms: C6orf83; pRGR1
Mammalian Cell Selection: Neomycin
Vector: pCMV6-Entry (PS100001)
E. coli Selection: Kanamycin (25 ug/mL)
ORF Nucleotide Sequence: >RC204070 representing NM_145169.
Blue=ORF Red=Cloning site Green=Tag(s)

```
GCTCGTTT TAGTGAACCGTCAGAATTTTGT AATACGACTCACTATAGGGCGCCGGGAATTCGTCGACTG
GATCCGGTACCGAGGAGATCTGCCGCC CGCATCGCC
ATGGAGAAGCTGCGGCGAGTCTGAGCGGCCAGGACGACGAGGAGCAGGGCCTGACTGCGCAGGTCCTG
GATGCCTCATCCCTTAGTTTCAACACCAGATTGAAATGGTTTGCCATCTGCTTCGTATGTGGCGTTTTT
TTTTCTATTCTTGAAGTGGATTGCTGTGGCTCCGGGCGGCATAAAGCTTTTTGCAGTGTTTTATACC
CTCGGAATCTTGCTGCGTTAGCCAGTACATGCTTTTTAATGGGACCTGTGAAGCAACTGAAGAAAATG
TTTGAAGCAACAAGATTGCTTGAACAATTGTTATGCTTTTGTGTTTCATATTTACCTGTGTGCTGCT
CTTTGGTGGCATAAGAAGGGACTGGCTGTGTTATTCTGCATATTGCAGTCTTGCAATGACCTGGTAT
AGCCTGTGCTACATCCCATATGCAAGGGATGCAGTTATTAATAGCTGTTCTTCTCTCCTAAGT
ACGCGTACGCGGCCGCTCGAGCAGAAACTCATCTCAGAAGAGGATCTGGCAGCAAATGATATCCTGGAT
TACAAGGATGACGACGATAAGGTTTAAACGGCCGGC
```

Protein Sequence: >Peptide sequence encoded by RC204070
Blue=ORF Red=Cloning site Green=Tag(s)

```
MEKLRRVLSGQDDEEQGLTAQVLDASSLSFNTRLKWF AICFVCGVFFSILGTGLLWLPGGIKLFAVFYT
LGNLAALASTCFLMGPVQLKKMFEATRLLATIVMLLCFI FTLCAALWWHKGLAVLFCILQFLSMTWY
SLSYIPYARDAVIKCCSLLS
TRTRPLEQKLISEEDLAANDILDYKDDDDKV
```

Chromatograms: https://cdn.origene.com/chromatograms/mk6774_a01.zip

Restriction Sites: SgfI-MluI



[View online »](#)

Cloning Scheme:


ACCN: NM_145169

ORF Size: 477 bp

OTI Disclaimer: The molecular sequence of this clone aligns with the gene accession number as a point of reference only. However, individual transcript sequences of the same gene can differ through naturally occurring variations (e.g. polymorphisms), each with its own valid existence. This clone is substantially in agreement with the reference, but a complete review of all prevailing variants is recommended prior to use. [More info](#)

OTI Annotation: This clone was engineered to express the complete ORF with an expression tag. Expression varies depending on the nature of the gene.

Components: The ORF clone is ion-exchange column purified and shipped in a 2D barcoded Matrix tube containing 10ug of transfection-ready, dried plasmid DNA (reconstitute with 100 ul of water).

- Reconstitution Method:**
1. Centrifuge at 5,000xg for 5min.
 2. Carefully open the tube and add 100ul of sterile water to dissolve the DNA.
 3. Close the tube and incubate for 10 minutes at room temperature.
 4. Briefly vortex the tube and then do a quick spin (less than 5000xg) to concentrate the liquid at the bottom.
 5. Store the suspended plasmid at -20°C. The DNA is stable for at least one year from date of shipping when stored at -20°C.

RefSeq: [NM_145169.3](#)

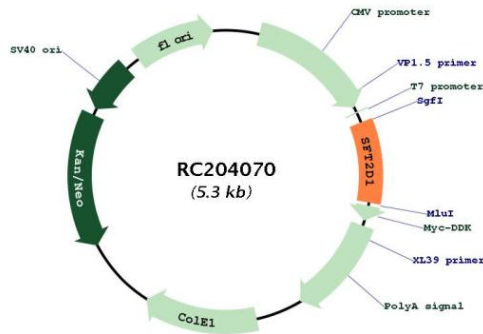
RefSeq Size: 717 bp

RefSeq ORF: 480 bp

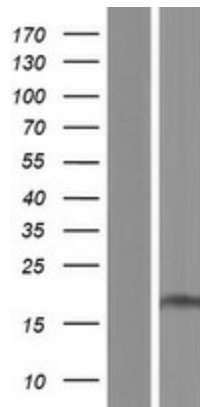
Locus ID: 113402

UniProt ID: [Q8WV19](#)
 Cytogenetics: 6q27
 Protein Families: Transmembrane
 MW: 17.8 kDa
 Gene Summary: May be involved in fusion of retrograde transport vesicles derived from an endocytic compartment with the Golgi complex.[UniProtKB/Swiss-Prot Function]

Product images:



Circular map for RC204070



Western blot validation of overexpression lysate (Cat# [LY408031]) using anti-DDK antibody (Cat# [TA50011-100]). Left: Cell lysates from untransfected HEK293T cells; Right: Cell lysates from HEK293T cells transfected with RC204070 using transfection reagent MegaTran 2.0 (Cat# [TT210002]).