

Product datasheet for **RC204068**

p66 alpha (GATAD2A) (NM_017660) Human Tagged ORF Clone

Product data:

Product Type:	Expression Plasmids
Product Name:	p66 alpha (GATAD2A) (NM_017660) Human Tagged ORF Clone
Tag:	Myc-DDK
Symbol:	p66 alpha
Synonyms:	p66alpha
Mammalian Cell Selection:	Neomycin
Vector:	pCMV6-Entry (PS100001)
E. coli Selection:	Kanamycin (25 ug/mL)



[View online »](#)

ORF Nucleotide Sequence:

>RC204068 ORF sequence
 Red=Cloning site Blue=ORF Green=Tags(s)
 TTTTGAATACGACTCACTATAGGGCGGCCGGGAATTCGTCGACTGGATCCGGTACCGAGGAGATCTGCC
 GCCGCGATCGCC

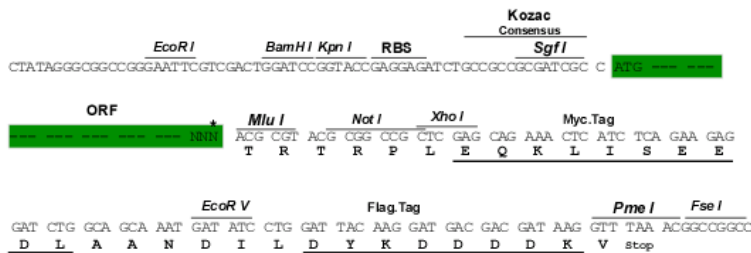
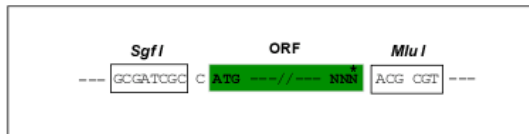
ATGATCAAGCAGCTGAAGGAAGAATTGAGGTTAGAAGAAGCAAACCTCGTGTGTTGAAAAAGTTGCGGC
 AGAGTCAAATACAAAAGGAAGCCACCGCCAGAAGCCACAGTTCTGTTGGGAGACCGTGACCACCCC
 TCCCCCGTTGTTGCGGGCACTCAGAACATTCCTGCTGGCAAGCCATCACTCCAGACCTCTTCAGCTCGG
 ATGCCCGCAGTGTACATACCCCGCCCCTGGTCCGAGGTGGGCAGCAGGCGTCTCGAAGCTGGGGCCAC
 AGGCGAGCTCACAGGTCGTATGCCCCACTCGTCAGGGGGGCTCAGCAAATCCACAGCATTAGGCAACA
 TTCCAGCACAGGGCCACCGCCCCTCTCTGGCCCCCGGGCGTCGGTGCCAGTGTGCAGATTAGGGA
 CAGAGGATCATCCAGCAGGGCTCATCCGCGTCGCCAATGTTCCCAACACCAGCCTGCTCGTCAACATCC
 CACAGCCACCCAGCATCACTGAAGGGGACAACAGCCACCTCCGCTCAGGCAACTCCACCCCACTAG
 TGTGGCCTCTGTGTCACCTCTGCCGAGTCTCCAGCAAGCCGACAGGCGGCCCAAGCTGGCGCTGCGC
 AAACAGCTGGAGAAGACGCTACTCGAGATCCCCCACCACCAAGCCCCAGCCCCAGAGATGAACCTCTGC
 CCAGCGCCGCAACAACGAGTTCATCTACCTGGTCCGGCCTGGAGGAGGTGGTGCAGAACCTACTGGAGAC
 ACAAGGCAGGATGTCCGCGCCACTGTGCTGTCCCGGGAGCCCTACATGTGTGCACAGTGAAGACGGAC
 TTCACGTGCCGCTGGCGGGAGGAGAAGAGCGGCCATCATGTGTGAGAACTGCATGACAACCAACCAGA
 AGAAGGCGCTCAAGGTGGAGCACACCAGCCGGCTGAAGGCCGCTTTGTGAAGGCGCTGCAGCAGGAACA
 GGAGATTGAGCAGCGCTCCTGCAGCAGGGCACGGCCCTGCACAGGCCAAGGCCAGCCACCGCTGCC
 CCACACCCGTCGTGAAGCAGGTCATAAAACCCCGGCGTAAGTTGGCGTCCGCTCAGGAGAGGCCCGCG
 ACTGGAGTAACGGGGCTGTGCTACAGGCCTCCAGCCAGTGTCCCGGGGTTCCGCCACAGCAGCCCGGAGG
 TGTCTGCACACGTTTTCAGTCCGTCACCCAACTGCAGAAGTCCAGCCTCGGCCACAGCCCTGGTCAAGG
 ACCGGCAGACATTCTGAGAGAACCTGAGCGCCGCAAGGGCAGCGCACCTCCAAGTGAAGAAGACGC
 CCCTCAGCACAGGCGGGACCTTGCCTTGTGAGCCCAAGCCTGGCGGTGCACAAGAGCTCTCGGCCGT
 GGACCGCCAGCGAGAGTACCTCTGGACATGATCCACCCGCTCCATCCCCAGTCAAGCCAGTGGAAA

ACGCGTACGCGGCCGCTCGAGCAGAACTCATCTCAGAAGAGGATCTGGCAGCAAATGATATCTGGATT
 ACAAGGATGACGACGATAAGGTTTAA

Restriction Sites:
 Cloning Scheme:

Sgfl-MluI

Cloning sites used for ORF Shuttling:



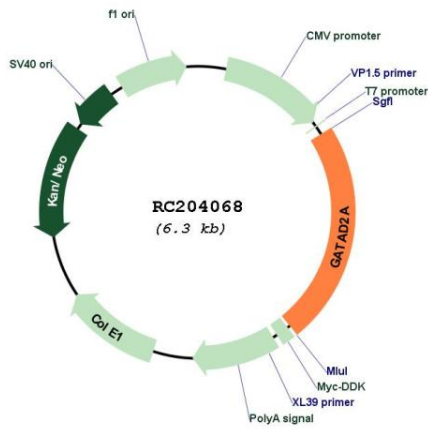
* The last codon before the Stop codon of the ORF

ACCN:

NM_017660

ORF Size:	1470 bp
OTI Disclaimer:	The molecular sequence of this clone aligns with the gene accession number as a point of reference only. However, individual transcript sequences of the same gene can differ through naturally occurring variations (e.g. polymorphisms), each with its own valid existence. This clone is substantially in agreement with the reference, but a complete review of all prevailing variants is recommended prior to use. More info
OTI Annotation:	This clone was engineered to express the complete ORF with an expression tag. Expression varies depending on the nature of the gene.
Components:	The ORF clone is ion-exchange column purified and shipped in a 2D barcoded Matrix tube containing 10ug of transfection-ready, dried plasmid DNA (reconstitute with 100 ul of water).
Reconstitution Method:	<ol style="list-style-type: none">1. Centrifuge at 5,000xg for 5min.2. Carefully open the tube and add 100ul of sterile water to dissolve the DNA.3. Close the tube and incubate for 10 minutes at room temperature.4. Briefly vortex the tube and then do a quick spin (less than 5000xg) to concentrate the liquid at the bottom.5. Store the suspended plasmid at -20°C. The DNA is stable for at least one year from date of shipping when stored at -20°C.
RefSeq:	NM_017660.2 , NP_060130.2
RefSeq Size:	5689 bp
RefSeq ORF:	1902 bp
Locus ID:	54815
UniProt ID:	Q86YP4
Cytogenetics:	19p13.11
Protein Families:	Transcription Factors
MW:	52.5 kDa
Gene Summary:	Transcriptional repressor. Enhances MBD2-mediated repression. Efficient repression requires the presence of GATAD2B.[UniProtKB/Swiss-Prot Function]

Product images:



Circular map for RC204068