

Product datasheet for **RC204065**

TTC17 (NM_018259) Human Tagged ORF Clone

Product data:

Product Type:	Expression Plasmids
Product Name:	TTC17 (NM_018259) Human Tagged ORF Clone
Tag:	Myc-DDK
Symbol:	TTC17
Mammalian Cell Selection:	Neomycin
Vector:	pCMV6-Entry (PS100001)
E. coli Selection:	Kanamycin (25 ug/mL)
ORF Nucleotide Sequence:	>RC204065 ORF sequence Red=Cloning site Blue=ORF Green=Tags(s)

TTTTGTAATACGACTCACTATAGGGCGGCCGGGAATTCGTCGACTGGATCCGGTACCGAGGAGATCTGCC
GCC**CGATCGCC**

ATGGCGGCGGCAGTAGGGGTTCTGGCCGGTACGAGCTGCCGCCTTGCTCCGGCCAGGCTGGCTCCTCA
GCCTTTCCGCCTTGCTGAGTGTGGCGGCACGAGGGGCCTCGCCACCACGCACTGGGTCGTCACGGAGGA
CGGGAAAATCCAGCAGCAGGTGGATTACCAATGAACTGAAGCATCCTCATGACCTAGTCATATTAATG
AGACAAGAAGCAACAGTTAACTACCTCAAAGAATTAGAGAAACAATTAGTTGCTCAAAAAATTCACATAG
AAGAGAATGAGGACAGAGACACAGGACTGGAACAGAGACATAATAAAGAAGACCCAGACTGCATCAAAGC
CAAGGTGCCCTTAGGGGACCTGGATCTATATGATGGCACATACATAACTTTGGAGAGCAAAGACATCAGT
CCTGAAGATTATATAGACACAGAATCTCCTGTCCCTCCAGACCCAGAGCAACCTGATTGTAATAAAATTC
TAGAACTTCCATATAGTATACATGCTTTTCAGCACTTGAGAGGTGTACAGGAGAGAGTTAATCTTTCTGC
ACCTCTGTACCTAAAGAAGACCAATCTTCACATATTTATCTAAACGGTTAGGAAGGAGTATAGATGAC
ATAGGTCACCTCATTGATGAAGGCTACAGAAGAACAATCTCCTCGTGGTACTGTATAACATGGCTTCAT
TTTACTGGAGAATTAAGAATGAGCCATATCAGGTAGTAGAATGTGCCATGCGAGCACTTCACTTCTCTTC
CAGGCACAATAAAGACATTGCCCTGGTCAACCTGGCAAACGTTCTACACAGACACACTTCTCTGCTGAT
GCTGCTGCTGGTCCATGCAGTCTGGATGACAGTGACTTCTTACCAGCTATTACACTTTGGGAATA
TATATGCAATGCTTGGGAATATAAACCCTCAGTGCTCTGTTATGACCAGCTTTGCAGGCCAGACCTGG
GTTTGAGCAAGCTATAAAGAGGAAGCATGCTGTCTATGTGAGCAAAAATGGAGCAGAAATTTGGAGGCT
CAGCATAGATCTCAGCGAACACTGAATGAGTTAAAAGAGTATCAAAAGCAGCATGACCACTACCTGA
GACAGCAGGAAAATCTAGAAAAACATAAATGATTGAGGAGGAGCAAAATCTTAAGAAATATCATTATGA
GACTCAGATGGCAAAAGAGGCACAATTAGGAAATCATCAGATATGCCGACTGGTCAACCAGCAGCATAGT
TTACATTGCCAGTGGGACCAGCCTGTACGCTATCATCGTGGAGATATCTTTGAAAATGTGGACTATGTT
AGTTTGGTGAGGATTCATCAACCTCCAGTATGATGTCTGTGAACCTTTGATGTTCAATCAAATCAGAGTGA
TATCAATGATTCCGGTCAAGTCTTCTCCGTAGCCATTCTATTCTGGATTTGGGCGAGGACTCTGAT
GCATATAGGACAAACAGCATATTTCTATGGCCTAAAAGAGCAGATTTGTACAGAAAAGCTACCTAGAGTCC
CTGTTGGTGGGAATTGCCAACGTATTTCTGCCTCCGAAAAACAAGGACTCAGGATCCACGAACTCAG



[View online >](#)

CAGTGATGATTATTCTACAGAAGAAGAGGCCCAAACCCCTGACTGTTCCATAACTGACTTCAGAAAAAGC
 CAACTCTGTCCTACTTAGTCAAAGAATTAGAGGTTTCGCATGGATCTGAAAGCCAAAATGCCAGATGACC
 ATGCACGAAAAATTTTGCCTTCCCGTATTAATAACTATACTATCCAGAAAGAAGAAATGGGTCTTTCTT
 ATTTATGCTATTAATAAGCCAAATGCTCCTATCTGGCTCACTCAATGAAGCTGGACTATACTGGAGA
 GCAGTAGGAAATAGCACTTTTGTATTGCCTGTCTCAGAGGGCTTTGAATTTAGCTCCACTTCAATACC
 AAGATGTTCTCTTGTCAACTTGGCCAACCTTTTGATTCATTACGGCCTTCATCTTGATGCCACTAAGCT
 GCTACTTCAAGCTTTGGCCATCAATAGCTCTGAGCCTTGACCTTTTGGAGCTGGGAAATGCTTACCTT
 GCTCTGAAGAATATCAGTGGGGCACTTGGAGCCTTTAGACAGGCCTTGAATTAACCACCAAATGTCCAG
 AGTGTGAAAAACAGCCTGAAGTTGATCCGCTGTATGCAGTTTTATCCTTTTCTGTACAACATCACTTCTTC
 TGTTCAGTGGTACGGTGGTTGAGGAGAGCAATGGTTCTGATGAGATGGAGAATTCAGATGAAACCAAA
 ATGTCAGAAGAAATCTGGCTTTGGTGGATGAATTTCAACAGGCATGGCCTTTGGAAGGCTTTGGGGTG
 CACTAGAGATGAAAGGGCGGCTCTAGACTTACAAGGAATACGGGTGCTGAAGAAAGTCCCAGGATGG
 AGTGGCCAGAAGCTTTGCTATGGAGACTGCAGAAGTGAAGATGATGAAGCAACAGAATGGATTACATTC
 CAGGTCAAACGTGTAAGAAACCCAAAGGAGATCATAAGAAAACCTCTGGGAAAAAGTAGAAACAGGTC
 AGATAGAAAAATGGACATCGTTACCAAGCAAACCTAGAGATCACTGGCCCCAAGGTGGCATCTCTGGGCC
 ACAAGGAAAAAACGTGACTACCAGCTCTGGGATGGCCAGCCCGGACGAATGCCTCAAACCTCCGCTGG
 GTAGAGCTGACTGCCATCGTGAGTACCTGGCTTGCAGTTTCTTCAAAAAACATTGACATCACAGAACACA
 TAGATTTTGCACCCCTATACAGCAGCCAGCAATGGAGCCTTTTGAATGGCAATCTCCCCACGAGTAT
 GCATACCTGGACCCTTGCATGGGGTTTCCAACCGAGCCAGCCTGCACTACACAGGGGAGAGTCAGTTA
 ACAGAGGTATTACAAAATCTCGGCAAAGACCAATCCACAACAGTCGTTGAACAGATTGGCACCCGAA
 TTGCCAAAGTTTTGAAAAGAACCAGACGTCCTGGGTCTCTCCAGCATGGCAGCCCTCTACTGGAGGT
 GAAAGGCCAAGGAAAGAAGGCAATCGACTGCCTCCGCCAGGCTCTGCACTATGCCCAACACCAGATGAAG
 GATGTGCCCTGATTAGCCTGGCCAACATCTTGCACAATGCCAAGCTCTGGAATGACGCCCTCATAGTAG
 CCACCATGGCAGTAGAGATCGCACACACTTTGCTGTGAACCACTTCACTCTGGGCAATGTCTACGTGGC
 AATGGAAGAATTTGAAAAGCACTGGTGTGGTATGAATCCACATTGAAGCTTCAGCCGAGTTTGTCCCA
 GCCAAGAACCGAATCCAGACCATCCAGTGTCACTTAATGCTGAAGAAGGGACGGGCTCTCCT

ACGCGTACGCGGCCGCTCGAGCAGAACTCATCTCAGAAGAGGATCTGGCAGCAAATGATATCCTGGATT
 ACAAGGATGACGACGATAAGGTTTAA

Protein Sequence:

>RC204065 protein sequence
 Red=Cloning site Green=Tags(s)

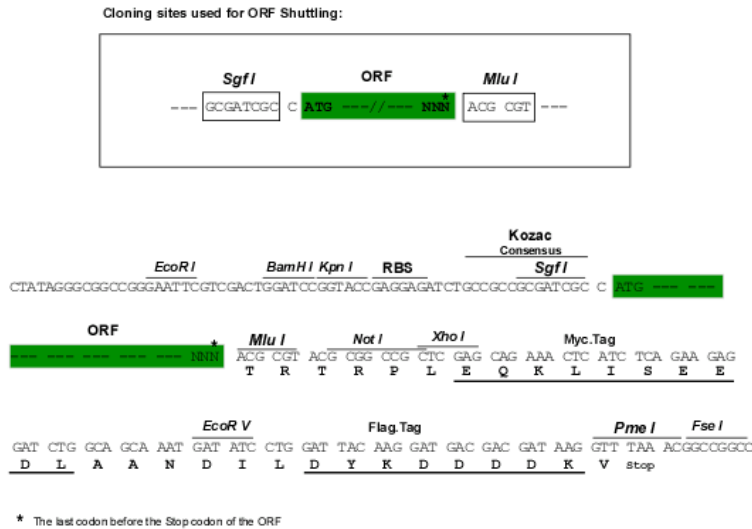
MAAAVGVGRGYELPPCSGPGWLLSLSALLSVAARGAFATTHWVVEDGKIQQQVDSMNLKHPHDLVILM
 RQEATVNYLKELEKQLVAQKIHIEENEDRDTGLEQRHNKEDPDCIKAKVPLGDLLDYDGTITLESKD
 IS PEDYIDTESPVPDPEQPDKILELPSYIHAFQHLRGVQERVNL SAPLLPKEDPIFTYL SKRLGRSIDD
 IGHLIHEGLQKNTSSWVLYNMAF YWRINKNEPYQVVECAMRALHFSSRHNKDIALVNLANVLRHAFH
 SAD AAVVVHAALDDSDFFTSYYTLGNIYAMLGEYNH SVLCYDHALQARPGFEQA IKRKHAVL CQQKLE
 QKLEA QHRSLQRTLNELKEYQKQHDHYLRQQEILEKHKL IQEEQLRNI IHETQMAKEAQLGNHQICRL
 VLNQQHS LHCQWDQPVRYHRGDI FENVYVQFGEDSSTSSMMSVNFVQSNQSDINDSVKSSPVAHSIL
 WIWGRSD AYRDKQHILWPKRADCTESYPRVPVGGELPTYFLPPENGLRIHELSSDDYSTEEEAQTPDC
 SITDFRKS HTLSYL VKELEVRMDL KAKMPDDHARKILL SRINNYTIP EEEIGSFLFHAIKPNAPIW
 LILNEAGLYWR AVGNSTFAIACLQRALNLAPLQYQDVPLVNLANLLIHYGLHLDATKLLQLALIN
 SSEPLTFLSLGNAYL ALKNISGALEAFRQALKLTTKCEPENS LKLRMCMQFY PFLYNI TSSVCSGT
 VVEESNGSDEMENSDET K MSEEILALVDEFQQA WPLEGFGGALEMKGRRDLQGIRVLKKGPDGVAR
 SSSCYGDCRSEDEATEWITF QVKRVKPKGDHKKTPGKKVETGQIENGHRYQANLEITGPKVASP
 GQGGKRDYQRLGWSPDECLKLRW VELTAIVSTWLAVSSKNIDITEHIDFATPIQQPAMEPLCNGNL
 PTSMHTLDHLHGVS NRASLHYTGESQL TEVLQNLGKDQYPQQSLEQIGTRIAKVLEKNQTSWVLS
 SMAALYWRVKGQGGKKAIDCLRQALHYAPHQMK DVPLISLANILHNAKLW NDAVIVATMAVEI
 IAPHFAVNHFTLGNVYVAMEEFKALVWYESTLKLQPEFVPAKNRIQTIQCHLM LKGRRSP

TRTRPLEQKLISEEDLAANDILDYKDDDDKV

Chromatograms: https://cdn.origene.com/chromatograms/mk6680_c02.zip

Restriction Sites: SgfI-MluI

Cloning Scheme:



ACCN: NM_018259

ORF Size: 3423 bp

OTI Disclaimer: The molecular sequence of this clone aligns with the gene accession number as a point of reference only. However, individual transcript sequences of the same gene can differ through naturally occurring variations (e.g. polymorphisms), each with its own valid existence. This clone is substantially in agreement with the reference, but a complete review of all prevailing variants is recommended prior to use. [More info](#)

OTI Annotation: This clone was engineered to express the complete ORF with an expression tag. Expression varies depending on the nature of the gene.

Components: The ORF clone is ion-exchange column purified and shipped in a 2D barcoded Matrix tube containing 10ug of transfection-ready, dried plasmid DNA (reconstitute with 100 ul of water).

Reconstitution Method:

1. Centrifuge at 5,000xg for 5min.
2. Carefully open the tube and add 100ul of sterile water to dissolve the DNA.
3. Close the tube and incubate for 10 minutes at room temperature.
4. Briefly vortex the tube and then do a quick spin (less than 5000xg) to concentrate the liquid at the bottom.
5. Store the suspended plasmid at -20°C. The DNA is stable for at least one year from date of shipping when stored at -20°C.

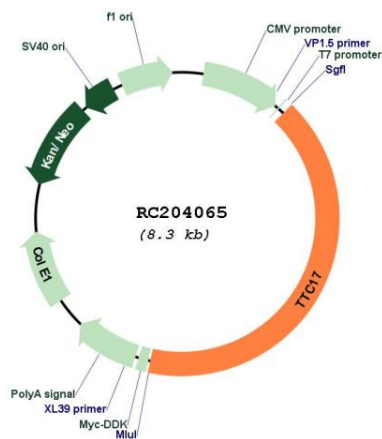
RefSeq: [NM_018259.6](#)

RefSeq Size: 4525 bp

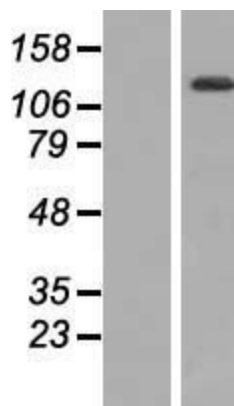
RefSeq ORF: 3426 bp

Locus ID: 55761
UniProt ID: [Q96AE7](#)
Cytogenetics: 11p12-p11.2
Domains: TPR
Protein Families: Protease
MW: 129.6 kDa
Gene Summary: Plays a role in primary ciliogenesis by modulating actin polymerization.[UniProtKB/Swiss-Prot Function]

Product images:



Circular map for RC204065



Western blot validation of overexpression lysate (Cat# [LY413197]) using anti-DDK antibody (Cat# [TA50011-100]). Left: Cell lysates from untransfected HEK293T cells; Right: Cell lysates from HEK293T cells transfected with RC204065 using transfection reagent MegaTran 2.0 (Cat# [TT210002]).