

Product datasheet for **RC204063**

FASTK (NM_006712) Human Tagged ORF Clone

Product data:

Product Type:	Expression Plasmids
Product Name:	FASTK (NM_006712) Human Tagged ORF Clone
Tag:	Myc-DDK
Symbol:	FASTK
Synonyms:	FAST
Mammalian Cell Selection:	Neomycin
Vector:	pCMV6-Entry (PS100001)
E. coli Selection:	Kanamycin (25 ug/mL)



[View online »](#)

ORF Nucleotide Sequence:

>RC204063 ORF sequence
 Red=Cloning site Blue=ORF Green=Tags(s)

TTTTGTAATACGACTCACTATAGGGCGGCCGGGAATTCGTCGACTGGATCCGGTACCGAGGAGATCTGCC
 GCC**CGGATCGCC**

ATGAGGAGGCCGCGGGGGGAACCCGGCCCCGGGCCCCGAGACCGACTGAGGGAGCGACCTGCGCAGGGC
 CCGGGGAGTCATGGTCTCCATCACCCAACCTCATGCTTCGAGTCCTGCTCTCTGCTCAGACTCCCTGC
 TCGGCTGTCTGGCCTGCTGCTGATCCCTCCAGTACAGCCCTGCTGTTGGGGCCAGCAAATGGGGGAC
 CGGCTGTTGGAGGAGGCCCCAGTGCAGGTCTGTGCAAGGACTGCAGCGGCTTCTGGAACAGGCGAAGA
 GCCCTGGGAGCTGCTGCGCTGGCTGGCCAGAACCCAGCAAGGTGCGCGCCACCCTACTCGGTGGC
 GCTTCGTCGTCTGGCCAGCTCTGGGGTCTCGGCCACGGCCCCCTCTGTGGAGCAGGTACACTGCAG
 GACTTGAGTCAGTCCATCCGAAACTGCCCTCCTTTGACATTCACACCATCCACGTGTGTCTGCACC
 TTGCAGTCTTACTGGCTTTCCATCTGATGGTCCCTGGTGTGTGCCCTGGAACAGGAGCGAAGGCTCCG
 CCTCCCTCGAAGCCACCTCCCTTTGCAGCCCTTCTCGAGGTGGGCAAGGTTGGAAGCTGCTCTA
 AGCTGCCCCCGTTTTCTGCGGTATCCACGGCAGCATCTGATCAGCAGCCTGGCAGAGGCAAGGCCAGAGG
 AACTGACTCCCCACGTGATGGTGTCTCTGGCCAGCACCTGGCCCGGCACCGGTTGCGGGAGCCCCAGCT
 TCTGGAAGCCATTGCCCACTTCTGGTGGTTACAGGAAACGCAACTCAGCAGCAAGGTGGTACAGAAGTTG
 GTCCTGCCCTTTGGGCGACTGAACTACCTGCCCTGGAACAGCAGTATGATGCCCTGCCTTGAGAGGATCC
 TGGCTCGGAAGCAGGGGTGGCACCCCTGGCTACAGTCAACATCTTGATGTCAGTGTGCCAACTGCGGTG
 CCTGCCCTCAGAGCCCTGCACCTTGTGTTTTCCCTGGCTTCACTCAACTACATCAGTGGCACCCCTCAT
 GCTCTGATTGTGCGTCTGACTCTCCCTGCTGGACACGGCCGTGGAGCTGGAGCTCCAGGATACCGGG
 GTCCTCCCTTCCCCGAAGGCAGCAAGTGCCCATCTTTCCCGAGCCTCTCATCACCGACCTGCCCCGCTG
 CAAGTACAGTACAAGGACATAGTAGCTGAGGGTTGCGCCAGCTGCTGGGGGAGGAGAAAATACCGCCAG
 GACCTGACTGTGCTCCAGGCTACTGCACAGACTTCTGCTGTGCGCCAGCAGCTCTGGTGTGTGCTTC
 CCGTGAGGACCCAGGACCCCTTCTGCCATACCCACCAAGGTCTGCCACAGGGCCAGGCTGCCTCTAG
 CGCCACTACTCGAGACCTGCCAGAGGGTGGTGTGTTGCGGGAACGCTGGCATTCTGCCGGGAC
 GGCCGGGTGCTGCTGGGCTCGAGGGCCCTGAGGGAGCGGCACCTAGGCCTGATGGGCTACCAGCTCTGC
 CGCTACCCTTTCGAGGAAGTGGAGTCCAGAGAGGCTGCCCCAGCTCAAGAGCTACCTGAGGCAGAAGCT
 CCAGGCCCTGGGCTGCGCTGGGGCTGAAGGGGGC

ACGCGTACGCGGCCGCTCGAGCAGAAACTCATCTCAGAAGAGGATCTGGCAGCAAATGATATCCTGGATT
 ACAAGGATGACGACGATAAGGTTTAA

Protein Sequence:

>RC204063 protein sequence
 Red=Cloning site Green=Tags(s)

MRRPRGEPGRAPRPTEGATCAGPGESWSPNSMLRVLLSAQTSAPARLSGLLLIPPVQPCCLGPSKWGD
 RPVGGGPSAGPVQGLQRLLAQKSPGELLRWLQNPQSKVRAHHYSVALRRLGQLLGSRRPPPVEQVTLQ
 DLSQLIIRNCPDFTIHTIHVCLHLAVLLGFPSDGPLVCALEQERRLRPPKPPPLQPLLRGGQGLEAAL
 SCPRFLRYPRQHLISSLAEARPEELTPHVMVLLAQHLARHRLREPQLLEAIAHFLVVQETQLSSKVVQKL
 VLPFGRLNYLPLEQQFMPCLERILAREAGVAPLATVNIIMSLCQLRCLPFRALHFVSPGFINYISGTPH
 ALIVRRYLSLLDTAVELELPGYRGPRLPRRQVPIFPQPLITDRARCKYSHKDIVAEGRLQLLGEKYRQ
 DLTVPVPGYCTDFLLCASSGAVLPVRTQDFLPYPPRSCPOQAASSATTRDPAQRVVLVLRERWHFCRD
 GRVLLGSRALRERHLGLMGYQLLPLPFEELSQRGLPQLKSYLRQKLQALGLRWGPEGG

TRTRPLEQKLISEEDLAANDILDYKDDDDKV

Chromatograms:

https://cdn.origene.com/chromatograms/mk6231_a07.zip

Restriction Sites:

SgfI-MluI

Cloning Scheme:

ACCN: NM_006712

ORF Size: 1647 bp

OTI Disclaimer: The molecular sequence of this clone aligns with the gene accession number as a point of reference only. However, individual transcript sequences of the same gene can differ through naturally occurring variations (e.g. polymorphisms), each with its own valid existence. This clone is substantially in agreement with the reference, but a complete review of all prevailing variants is recommended prior to use. [More info](#)

OTI Annotation: This clone was engineered to express the complete ORF with an expression tag. Expression varies depending on the nature of the gene.

Components: The ORF clone is ion-exchange column purified and shipped in a 2D barcoded Matrix tube containing 10ug of transfection-ready, dried plasmid DNA (reconstitute with 100 ul of water).

Reconstitution Method:

1. Centrifuge at 5,000xg for 5min.
2. Carefully open the tube and add 100ul of sterile water to dissolve the DNA.
3. Close the tube and incubate for 10 minutes at room temperature.
4. Briefly vortex the tube and then do a quick spin (less than 5000xg) to concentrate the liquid at the bottom.
5. Store the suspended plasmid at -20°C. The DNA is stable for at least one year from date of shipping when stored at -20°C.

RefSeq: [NM_006712.5](#)
RefSeq Size: 1885 bp

RefSeq ORF: 1650 bp

Locus ID: 10922

UniProt ID: [Q14296](#)

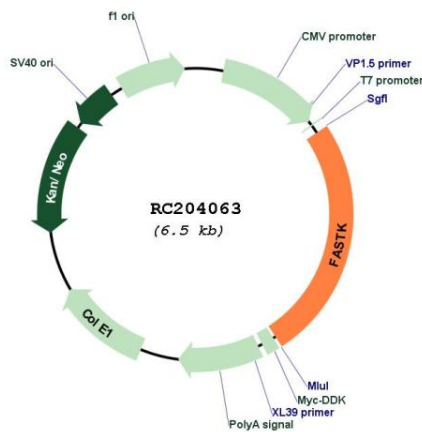
Cytogenetics: 7q36.1

Protein Families: Druggable Genome, Protein Kinase

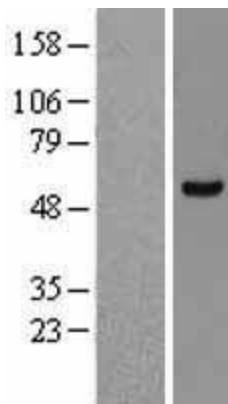
MW: 61.1 kDa

Gene Summary: The protein encoded by this gene is a member of the serine/threonine protein kinase family. This kinase was shown to be activated rapidly during Fas-mediated apoptosis in Jurkat cells. In response to Fas receptor ligation, it phosphorylates TIA1, an apoptosis-promoting nuclear RNA-binding protein. The encoded protein is a strong inducer of lymphocyte apoptosis. Two transcript variants encoding different isoforms have been found for this gene. Other variants exist, but their full-length natures have not yet been determined. [provided by RefSeq, Jul 2008]

Product images:



Circular map for RC204063



Western blot validation of overexpression lysate (Cat# [LY416471]) using anti-DDK antibody (Cat# [TA50011-100]). Left: Cell lysates from untransfected HEK293T cells; Right: Cell lysates from HEK293T cells transfected with RC204063 using transfection reagent MegaTran 2.0 (Cat# [TT210002]).