

Product datasheet for **RC204060**

IGFBP6 (NM_002178) Human Tagged ORF Clone

Product data:

Product Type:	Expression Plasmids
Product Name:	IGFBP6 (NM_002178) Human Tagged ORF Clone
Tag:	Myc-DDK
Symbol:	IGFBP6
Synonyms:	IBP6
Mammalian Cell Selection:	Neomycin
Vector:	pCMV6-Entry (PS100001)
E. coli Selection:	Kanamycin (25 ug/mL)
ORF Nucleotide Sequence:	>RC204060 ORF sequence Red=Cloning site Blue=ORF Green=Tags(s)

TTTTGTAATACGACTCACTATAGGGCGGCCGGAATTCGTCGACTGGATCCGGTACCGAGGAGATCTGCCGCC**CGATCGCC**

ATGACCCCCACAGGCTGCTGCCACCGCTGCTGCTGCTAGCTCTGCTGCTCGCTGCCAGCCCAGGAGGCGCCTTGGCGCGGTGCCAGGCTGCGGGCAAGGGGTGCAGGCGGGTGTCCAGGGGGCTGCGTGGAGGAGGAGGATGGGGGGTCGCCAGCCGAGGGCTGCGCGGAAGCTGAGGGCTGTCTCAGGAGGGAGGGCCAGGAGTGGGGGGTCTACACCCCTAACTGCGCCCCAGGACTGCAGTGCCATCCGCCAAGGACGACGAGGCGCCTTGGCGGGCGCTGCTGCTCGGCCGAGGCCGCTGCCTCCGGCCCGCGCCCTGCTGTTGCAGAGGAGAATCCTAAGGAGAGTAAACCCCAAGCAGGCACTGCCCGCCACAGGATGTGAACCGCAGAGACCAACAGAGGAATCCAGGCACCTCTACCACGCCCTCCAGCCCAATTCGCGGGTGTCCAAGCACTGAGATGGGCCCATGCCGTAGACATCTGGACTCAGTGCTGCAGCAACTCCAGACTGAGGTCTACCGAGGGGCTCAAACACTCTACGTGCCCAATTGTGACCATCGAGGCTTCTACCGGAAGCGGCAGTGCCGCTCCTCCAGGGGCAGCGCCGAGGTCCCTGCTGGTGTGTGGATCGGATGGGCAAGTCCCTGCCAGGGTCTCCAGATGGCAATGGAAGCTCCTCTGCCCCACTGGGAGTAGCGGC

ACGCGTACGCGGCCGCTCGAGCAGAACTCATCTCAGAAGAGGATCTGGCAGCAAATGATATCCTGGATTACAAGGATGACGACGATAAGGTTTAA



[View online »](#)

Protein Sequence: >RC204060 protein sequence
 Red=Cloning site Green=Tags(s)

MTPHRLLPLLLLLLALLAASPGGALARCPGCGQGVQAGCPGGCVEEEDGGSPAEGCAEAEGLRREGQE
 CGVYTPNCAPGLQCHPPKDDEAPLRALLLGRGRCLPARAPAVAENPKESKPQAGTARPQDVNRRDQQRN
 PGTSTTPSQPNSAGVQDTEMGPCRRHLDSVLQQLQTEVYRGAQTLVVPNCDHGRFYRKRQCRSSQGQRRG
 PCWCVDRMGKSLPGSPDNGSSSCTGSSG

TRTRPLEQKLISEEDLAANDILDYKDDDDKV

Chromatograms: https://cdn.origene.com/chromatograms/mk6058_d03.zip

Restriction Sites: SgfI-MluI

Cloning Scheme:

Cloning sites used for ORF Shuttling:



* The last codon before the Stop codon of the ORF

ACCN: NM_002178

ORF Size: 720 bp

OTI Disclaimer: The molecular sequence of this clone aligns with the gene accession number as a point of reference only. However, individual transcript sequences of the same gene can differ through naturally occurring variations (e.g. polymorphisms), each with its own valid existence. This clone is substantially in agreement with the reference, but a complete review of all prevailing variants is recommended prior to use. [More info](#)

OTI Annotation: This clone was engineered to express the complete ORF with an expression tag. Expression varies depending on the nature of the gene.

Components: The ORF clone is ion-exchange column purified and shipped in a 2D barcoded Matrix tube containing 10ug of transfection-ready, dried plasmid DNA (reconstitute with 100 ul of water).

Reconstitution Method:

1. Centrifuge at 5,000xg for 5min.
2. Carefully open the tube and add 100ul of sterile water to dissolve the DNA.
3. Close the tube and incubate for 10 minutes at room temperature.
4. Briefly vortex the tube and then do a quick spin (less than 5000xg) to concentrate the liquid at the bottom.
5. Store the suspended plasmid at -20°C. The DNA is stable for at least one year from date of shipping when stored at -20°C.

RefSeq: [NM_002178.3](#)

RefSeq Size: 980 bp

RefSeq ORF: 723 bp

Locus ID: 3489

UniProt ID: [P24592](#)

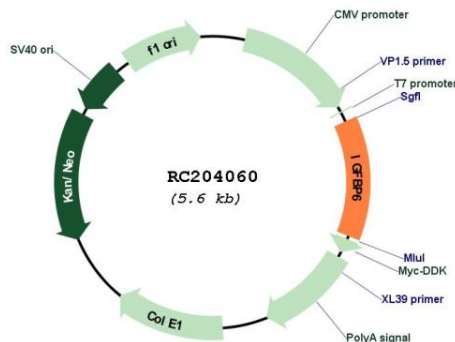
Cytogenetics: 12q13.13

Protein Families: Secreted Protein

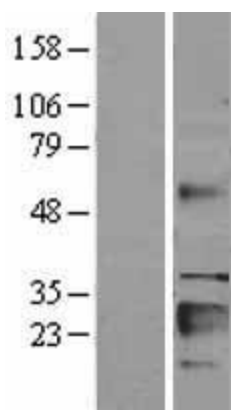
MW: 25.3 kDa

Gene Summary: IGF-binding proteins prolong the half-life of the IGFs and have been shown to either inhibit or stimulate the growth promoting effects of the IGFs on cell culture. They alter the interaction of IGFs with their cell surface receptors.[UniProtKB/Swiss-Prot Function]

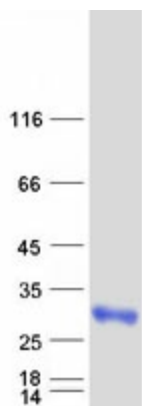
Product images:



Circular map for RC204060



Western blot validation of overexpression lysate (Cat# [LY400790]) using anti-DDK antibody (Cat# [TA50011-100]). Left: Cell lysates from untransfected HEK293T cells; Right: Cell lysates from HEK293T cells transfected with RC204060 using transfection reagent MegaTran 2.0 (Cat# [TT210002]).



Coomassie blue staining of purified IGFBP6 protein (Cat# [TP304060]). The protein was produced from HEK293T cells transfected with IGFBP6 cDNA clone (Cat# RC204060) using MegaTran 2.0 (Cat# [TT210002]).