

## Product datasheet for RC204059

### CMTM7 (NM\_138410) Human Tagged ORF Clone

#### Product data:

**Product Type:** Expression Plasmids  
**Product Name:** CMTM7 (NM\_138410) Human Tagged ORF Clone  
**Tag:** Myc-DDK  
**Symbol:** CMTM7  
**Synonyms:** CKLFSF7  
**Mammalian Cell Selection:** Neomycin  
**Vector:** pCMV6-Entry (PS100001)  
**E. coli Selection:** Kanamycin (25 ug/mL)  
**ORF Nucleotide Sequence:** >RC204059 ORF sequence  
 Red=Cloning site Blue=ORF Green=Tags(s)

TTTTGTAATACGACTCACTATAGGGCGCCGGGAATTCGTCGACTGGATCCGGTACCGAGGAGATCTGCC  
 GCC**CGATCGCC**

ATGTCGCACGGAGCCGGGCTCGTCCGCACCACGTGCAGCAGCGGCAGCGCTCGGACCCGGGGCCGGCG  
 CGGCCAGCCAGCGCGAGCCCTTGGAGGGGCTGCTGGACCTCAGTACCCCGCACCCACGGGCCCT  
 GCTGAAAGTGGCGAAATGGTACCCTGCTGATTGCCTTCATCTGTGTGCGGAGCTCCCTGTGGACCAAC  
 TACAGCGCTACAGCTACTTTGAAGTGGTACCATTTGCGACTTGATAATGATCCTCGCCTTTACCTGG  
 TCCACCTCTCCGCTTCTACCGCGTGTACCTGTATCAGCTGGCCCTGTCGGAACCTTCTGCACTATTT  
 AATCGGTACCCTGCTCCTCCTCATCGCCTCCATTGTGGCAGCTTCCAAGAGTTACAACCAGAGCGGACTG  
 GTAGCCGGAGCGATCTTTGGTTTCATGGCCACCTTCTCTGCATGGCAAGCATATGGCTGTCCTATAAGA  
 TCTCGTGTGTAACCCAGTCCACAGATGCAGCCGTC

**ACGCGT**ACGCGGCCGCTCGAGCAGAACTCATCTCAGAAGAGGATCTGGCAGCAAATGATATCCTGGATT  
 ACAAGGATGACGACGATAAGGTTTAA

**Protein Sequence:** >RC204059 protein sequence  
 Red=Cloning site Green=Tags(s)

MSHGAGLVRTTSSGSALGPGAGAAQPSASPLEGLLDLSYPRTHAALLKVAQMVTLIIAFICVRSSLWNT  
 YSAYSYFEVVTICDLIMILAFYLVHLFRFYRVLTCISWPLSELLHYLIGTLLLLIASIVAASKSYNQSGL  
 VAGAIQFMATFLCMASIWLSYKISCVTQSTDAAV

**TRTRPLEQKLI**SEEDLAANDILDYKDDDDKV

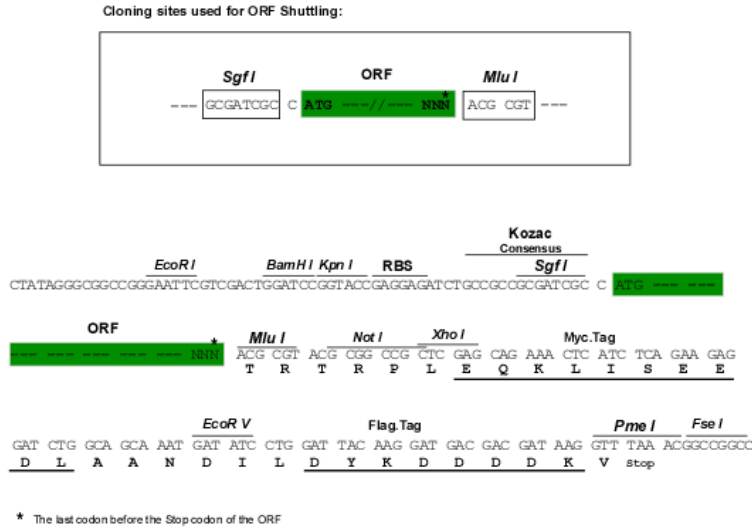
**Chromatograms:** [https://cdn.origene.com/chromatograms/mk6568\\_g07.zip](https://cdn.origene.com/chromatograms/mk6568_g07.zip)



[View online »](#)

**Restriction Sites:** SgfI-MluI

**Cloning Scheme:**



**ACCN:** NM\_138410

**ORF Size:** 525 bp

**OTI Disclaimer:** The molecular sequence of this clone aligns with the gene accession number as a point of reference only. However, individual transcript sequences of the same gene can differ through naturally occurring variations (e.g. polymorphisms), each with its own valid existence. This clone is substantially in agreement with the reference, but a complete review of all prevailing variants is recommended prior to use. [More info](#)

**OTI Annotation:** This clone was engineered to express the complete ORF with an expression tag. Expression varies depending on the nature of the gene.

**Components:** The ORF clone is ion-exchange column purified and shipped in a 2D barcoded Matrix tube containing 10ug of transfection-ready, dried plasmid DNA (reconstitute with 100 ul of water).

**Reconstitution Method:**

1. Centrifuge at 5,000xg for 5min.
2. Carefully open the tube and add 100ul of sterile water to dissolve the DNA.
3. Close the tube and incubate for 10 minutes at room temperature.
4. Briefly vortex the tube and then do a quick spin (less than 5000xg) to concentrate the liquid at the bottom.
5. Store the suspended plasmid at -20°C. The DNA is stable for at least one year from date of shipping when stored at -20°C.

**RefSeq:** [NM\\_138410.4](#)

**RefSeq Size:** 1369 bp

**RefSeq ORF:** 528 bp

**Locus ID:** 112616

**UniProt ID:** [Q96FZ5](#)

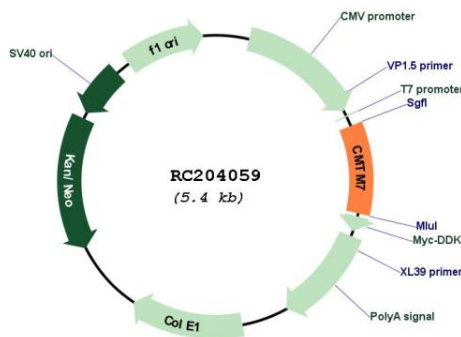
**Cytogenetics:** 3p22.3

**Protein Families:** Transmembrane

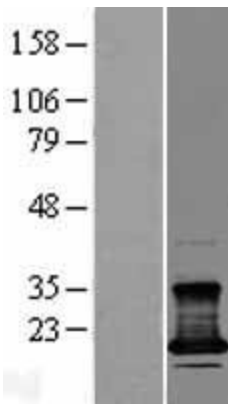
**MW:** 18.8 kDa

**Gene Summary:** This gene belongs to the chemokine-like factor gene superfamily, a novel family that is similar to the chemokine and transmembrane 4 superfamilies. This gene is one of several chemokine-like factor genes located in a cluster on chromosome 3. This gene acts as a tumor suppressor that regulates G1/S transition in the cell cycle, and epidermal growth factor receptor/protein kinase B signaling during tumor pathogenesis. Alternative splicing results in multiple transcript variants encoding different isoforms. [provided by RefSeq, Feb 2016]

**Product images:**



Circular map for RC204059



Western blot validation of overexpression lysate (Cat# [LY408668]) using anti-DDK antibody (Cat# [TA50011-100]). Left: Cell lysates from untransfected HEK293T cells; Right: Cell lysates from HEK293T cells transfected with RC204059 using transfection reagent MegaTran 2.0 (Cat# [TT210002]).