

## Product datasheet for **RC204052**

### **NASP (NM\_002482) Human Tagged ORF Clone**

#### **Product data:**

Product Type:	Expression Plasmids
Product Name:	NASP (NM_002482) Human Tagged ORF Clone
Tag:	Myc-DDK
Symbol:	NASP
Synonyms:	FLB7527; HMDRA1; PRO1999
Mammalian Cell Selection:	Neomycin
Vector:	pCMV6-Entry (PS100001)
E. coli Selection:	Kanamycin (25 ug/mL)



[View online »](#)

ORF Nucleotide  
Sequence:

>RC204052 ORF sequence  
Red=Cloning site Blue=ORF Green=Tags(s)

TTTTGTAATACGACTCACTATAGGGCGGCCGGGAATTCGTCGACTGGATCCGGTACCGAGGAGATCTGCC  
GCC**CGCATCGCC**

ATGGCCATGGAGTCCACAGCCACTGCCGCCGTCGCCGCGGAGCTGGTTTCTGCCACAAAATTGAAGATG  
TTCCTGCTCCTTCTACATCTGCAGATAAAGTGGAGAGTCTGGATGTGGATAGTGAAGCTAAGAACTATT  
GGGTTTAGGACAGAAACATCTGGTGATGGGGGATATTCCAGCAGCTGTCAATGCATTCCAGGAAGCAGCT  
AGTCTTTTAGGTAAGAAGTATGGAGAGACAGCTAATGAGTGTGGAGAAGCCTTCTTTTCTATGGGAAAT  
CACTTCTGGAGTTGGCAAGAATGGAGAATGGTGTGTTGGGAAACGCCTTGGAAAGGTGTGCATGTGAAGA  
GGAAGAAGGAGAAAAACAGAAGATGAATCTCTGGTAGAAAATAATGATAACATAGATGAGGAAGCAAGG  
GAAGAGTTGAGAGAACAGGTTTATGACGCCATGGGAGAAAAGAAGAAGCCAAAAAACAGAAGACAAGT  
CTTTGGCAAAGCCTGAACTGATAAAGAACAGGACAGTGAATGGAGAAGGTGGAAGAGAAGATATGGA  
TATAAGTAAATCTGCAGAGGAGCCACAGGAAAAAGTTGACTTGACTCTAGATTGGTTAACTGAAACCTCT  
GAAGAGGCCAAAAGGAGGAGCAGCACAGAAAGGACCGAATGAAGCTGAGGTCACTTCTGGGAAAGCCAGAAC  
AGGAAGTACCAGATGCTGAGGAAGAAAAATCAGTTTCTGGAAGTGTCCAAGAAGAGTGCAGAGAAAA  
AGGAGGTCAAGGAGAAGCAGGGAGAGGTAATTGTGAGCATAGAGGAGAAGCCAAAAGAAGTTTCAGAAGAG  
CAGCCTGTGGTACTCTAGAAAAGCAGGGCACTGCAGTGGAGGTAGAAGCAGAGTCTTTAGACCCGACAG  
TCAAGCCAGTGGATGTGGGTGGGACGAGCCAGAGGAGAAGGTAGTTACCTCTGAAAACGAGGCAGGAAA  
GGCGGTTCTTGAACAACGGTAGGTCAAGAAAGTACCACCTGTGAAGAGTACCAGAGGTGACAACAGAG  
GCTGCAGAGGCCCTCAGCTGTAGAGGCTGGATCAGAAGTCTCTGAAAAGCCTGGGCAGGAGCTCCAGTTC  
TCCCTAAGGATGGTGCAGTCAATGGACCGTCAGTTGTAGGAGATCAGACTCCTATTGAACCACAGACTTC  
TATAGAAAAGACTGACAGAAACAAAAGATGGCTCAGGACTAGAGGAGAAGGTGAGGCAAAAGCTGGTTCTC  
AGTCAGGAGGAGACTAAGCTGTCTGTAGAAAGTCTGAGGCAGCTGGAGATGGGGTTGATACCAAGGTAG  
CCCAGGGAGCTACTGAGAAATCACCTGAAGACAAAGTTCCAGATAGCTGCTAATGAAGAGACACAAGAGAG  
AGAAGAACAGATGAAAGAGGGTGAAGAACTGAAGGCTCAGAAGAGGATGATAAAGAAAATGATAAGACC  
GAAGAAATGCCAAATGATTCAGTCTTGAACAAGTCTCTTCAAGAAAATGAGGAGGAGGAGATTGGGA  
ACCTAGAGCTTGCCTGGGATATGCTGGATTTAGCAAAGATCATTTTAAAAGGCAAGAAACAAAAGAAGC  
ACAGCTTTATGCTGCCAGGCACATCTAAACTCGGAGAAGTTAGTGTGAATCTGAAAACATATGTGCAA  
GCTGTGGAGGAGTCCAGTCTGCCTAACCTGCAGGAACAGTACCTGGAAGCCACGACCGTCTCCTTG  
CAGAGACCCACTACCAGCTGGGCTTGGCTTATGGGTACAACCTCAGTATGATGAGGCAGTGGCACAGTT  
CAGCAAATCTATTGAAGTCATTGAGAACAGAATGGCTGTACTAAACGAGCAGGTGAAGGAGGCTGAAGGA  
TCGCTGCTGAATACAAGAAAGAAATTGAGGAACTAAAGGAACTGCTACCCGAAATTAGAGAGAAGATAG  
AAGATGCAAAGGAGTCTCAGCGTAGTGGGAATGTAGCTGAACTGGCTCTGAAAGCTACTCTGGTGGAGAG  
TTCTACTTCAGGTTTCACTCCTGGTGGAGGAGGCTCTTCAGTCTCCATGATTGCCAGTAGAAAGCCAACA  
GACGGTGTCTTCCATCAAATTTGTGACTGATATTTCCACCTTGTGAGAAAGAAGAGGAAACAGAGG  
AAGAGAGTCCCCGAAAGATGATGCAAAGAAAGCCAAACAAGAGCCGAGGTGAACGGAGGCAGTGGGGA  
TGCTGTCCCAGTGAAAATGAAGTTTCGAAAACATGGAGGAGGAGGCTGAGAATCAGGCTGAAAGCCGG  
GCAGCAGTGGAGGGGACAGTGGAGGCTGGAGCTACAGTTGAAAGCACTGCATGT

**ACGCGT**ACGCGGCCGCTCGAGCAGAACTCATCTCAGAAGAGGATCTGGCAGCAAATGATATCCTGGATT  
ACAAGGATGACGACGATAAGGTTTAA

**Protein Sequence:** >RC204052 protein sequence  
Red=Cloning site Green=Tags(s)

MAMESTATAAVAAELVSADKIEDVPAPSTSADKVESLDVDSEAKLLGLGQKHLVMGDIPAAVNAFQEAASLLGKKYGETANECGEAFFFYGKSLLLEARMENGLGNALEGVHVEEEEGEKTEDESLVENNDNIDEEAREELREQVYDAMGEKEEAKKTEDKSLAKPETDKEQDSEMEKGGREDMDISKSAEEPQEKVDLTLDWLTETS  
EEAKGGAPEGPNEAEVTSKGPEQEVPAESEEKSVSGTDVQEECREKGGQEKQGEVIVSIEEKPKEVSEE  
QPVVTTLEKQGTAVEVEAESLDPTVKPVDVGGDEPEEKVVTSENEAGKAVLEQLVGVQEVPPAEESPEVTTE  
AAEASAVEAGSEVSEKPGQEPVLPKDGAVNGPSVVGDTPIEPQTSIERLTETKDGSGLEEKVRAKLVPSQ  
EETKLSVEESEAAAGDGVDTKVAQGATEKSPEDKVQIAANEETQEREEQMKEGEETEGSEEDDKENDKT  
EEMPNDVLENKSLQENEEEEIGNLELAWDMLDLAKIIFKRQETKEAQLYAAQAHLKLGEVSVESYVQ  
AVEEFQSCNLQEQYLEAHDRLLAETHYQLGLAYGNSQYDEAVAQFSKSIEVIENRMVNLNEQVKEAEG  
SSAEYKKEIEELKELLPEIREKIEDAKESQRSGNVAELALKATL VESSTSGFTPGGGSSVSMIASRKPT  
DGASSNCVTDISHLVRKKRKPEEESPRKDDAKKAKQEPEVNGGSGDAVPSGNEVSENMEEEAENQAESR  
AAVEGTVEAGATVESTAC

TRTRPLEQKLISEEDLAANDILDYKDDDDKV

**Chromatograms:** [https://cdn.origene.com/chromatograms/mk6156\\_e09.zip](https://cdn.origene.com/chromatograms/mk6156_e09.zip)

**Restriction Sites:** Sgfl-Mlul

Cloning Scheme:



ACCN: NM\_002482

ORF Size: 2364 bp

OTI Disclaimer: The molecular sequence of this clone aligns with the gene accession number as a point of reference only. However, individual transcript sequences of the same gene can differ through naturally occurring variations (e.g. polymorphisms), each with its own valid existence. This clone is substantially in agreement with the reference, but a complete review of all prevailing variants is recommended prior to use. [More info](#)

OTI Annotation: This clone was engineered to express the complete ORF with an expression tag. Expression varies depending on the nature of the gene.

Components: The ORF clone is ion-exchange column purified and shipped in a 2D barcoded Matrix tube containing 10ug of transfection-ready, dried plasmid DNA (reconstitute with 100 ul of water).

**Reconstitution Method:**

1. Centrifuge at 5,000xg for 5min.
2. Carefully open the tube and add 100ul of sterile water to dissolve the DNA.
3. Close the tube and incubate for 10 minutes at room temperature.
4. Briefly vortex the tube and then do a quick spin (less than 5000xg) to concentrate the liquid at the bottom.
5. Store the suspended plasmid at -20°C. The DNA is stable for at least one year from date of shipping when stored at -20°C.

**RefSeq:** [NM\\_002482.4](#)

**RefSeq Size:** 3301 bp

**RefSeq ORF:** 2367 bp

**Locus ID:** 4678

**UniProt ID:** [P49321](#)

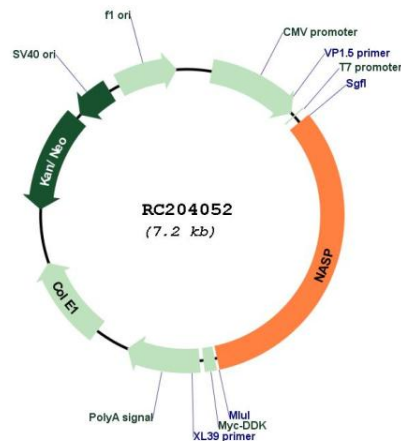
**Cytogenetics:** 1p34.1

**Domains:** TPR

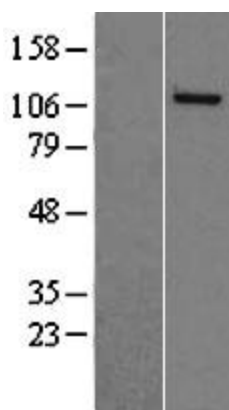
**MW:** 85.2 kDa

**Gene Summary:** This gene encodes a H1 histone binding protein that is involved in transporting histones into the nucleus of dividing cells. Multiple isoforms are encoded by transcript variants of this gene. The somatic form is expressed in all mitotic cells, is localized to the nucleus, and is coupled to the cell cycle. The testicular form is expressed in embryonic tissues, tumor cells, and the testis. In male germ cells, this protein is localized to the cytoplasm of primary spermatocytes, the nucleus of spermatids, and the periacrosomal region of mature spermatozoa. [provided by RefSeq, Jul 2008]

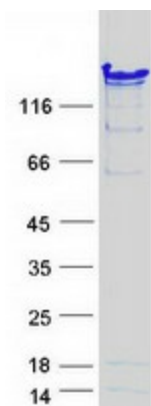
## Product images:



Circular map for RC204052



Western blot validation of overexpression lysate (Cat# [LY400884]) using anti-DDK antibody (Cat# [TA50011-100]). Left: Cell lysates from untransfected HEK293T cells; Right: Cell lysates from HEK293T cells transfected with RC204052 using transfection reagent MegaTran 2.0 (Cat# [TT210002]).



Coomassie blue staining of purified NASP protein (Cat# [TP304052]). The protein was produced from HEK293T cells transfected with NASP cDNA clone (Cat# RC204052) using MegaTran 2.0 (Cat# [TT210002]).