

Product datasheet for **RC204050**

HINFP (NM_198971) Human Tagged ORF Clone

Product data:

Product Type:	Expression Plasmids
Product Name:	HINFP (NM_198971) Human Tagged ORF Clone
Tag:	Myc-DDK
Symbol:	HINFP
Synonyms:	HiNF-P; MIZF; ZNF743
Mammalian Cell Selection:	Neomycin
Vector:	pCMV6-Entry (PS100001)
E. coli Selection:	Kanamycin (25 ug/mL)



[View online »](#)

ORF Nucleotide Sequence:

>RC204050 ORF sequence
 Red=Cloning site Blue=ORF Green=Tags(s)

TTTTGTAATACGACTCACTATAGGGCGGCCGGAATTCGTCGACTGGATCCGGTACCGAGGAGATCTGCC
 GCC**CGGATCGCC**

ATGCCGCCTCTGGGAAAGTTCCCCGAAAGGAGAATCTGTGGCTACAGTGTGAGTGGGGTCTGCTCCT
 TTGTGTGCTCAACCATGGAAGTTCTTTGAGCATGTCACTCAGCACCTGCAGCAGCACCTGCATGGCTC
 TGGGGAGGAGGAGGAAGAGGAAGAGGAGGATGACCCACTTGAGGAAGAATTCTCTGCTTGTGGCAGGAA
 TGTGGCTTTTGTCTCTGGACAGTTCTGCTGACCTCATCCGCATGTCTACTTCCACTGCTACCACACCA
 AGCTGAAACAGTGGGGCTGCAGGCCTTGCAAAGCCAGGCTGACCTTGGCCCTGCATCTGGACTTCCA
 GAGCCGGAACGTCATCCCTGATATCCCTGACCCTTCTGTGTCTGTGGGAGCACTGTGAGAATTCCTTC
 GACAATCTGAGTGGTTTTATCGGCATGTGGAAGCACACAGTCTGTGCTGTGAATACGAAGCAGTCGGCA
 AGGACAACCCGGTGGTGTGTGGCTGGAAGGCTGTACCTGCACCTTCAAGGACCGCAGTAAACTTCG
 AGAGCACCTCCGACCCATACCCAGGAGAAAGTGGTAGCCTGCCACCTGTGGGGCATGTTTGCCAAC
 AATACCAAGTTCTTAGATCACATCCGTCGCCAGACCTCATTGGATCAGCAGCACTCCAGTGTCTCACT
 GTTCCAAGAGATTTGCCACAGAGCGGCTATTGCGGGACCACATGCGCAACCATGTGAATCACTATAAGTG
 CCCTCTGTGTGACATGACCTGCCGCTGCCTTCTCCCTCCGCAACCACATGCGCTTTCGTACAGTGAG
 GACCGGCCTTTAAATGTGACTGTTGTGACTACAGCTGCAAGAATCTTATTGACCTCCAGAAGCACCTGG
 ATACCCACAGCGAGGAGCCAGCCTACAGGTGTGATTTTGAGAAGTGCACCTTCAGTGCCTGATCCCTCTG
 CTCTATCAAGTCCATTACCGCAAAGTACATGAAGGAGACTCTGAGCCAAGGTACAAATGTCATGTGTGT
 GACAAATGCTTACACGGGGCAACAACCTCACCTGCACCTTCGCAAGAAGCACCAGTTCAGTGGCCCT
 CAGGGCATCCCCGTTTTTCGGTACAAGAACATGAAGATGGCTATATGCGGCTGCAGCTGGTTCGCTACGA
 GAGTGTAGAGCTGACACAGCAACTGCTGCGGCAACCACAAGAGGATCGGGCTGGGAACGTCGCTGAAC
 GAGAGCAGCCTGCAGGCATTATTCTAGAAACAGTGCCAGGGAGCCAGGACGTAAAGGAAGGAAGAGG
 AGGGCAAGGGTAGCGAAGGGACAGCCCTCTCAGCCTCTCAGGACAACCCAGTTCGTATCCACGTGGT
 GAATCAGACCAATGCCAAGGCCAGCAAGAGATTGTCTACTATGTGCTGTCTGAAGCCCCAGGGAGCCT
 CCCCCAGTCCCTGAGCCACCTTCAGGGGCATCATGAAAAGCTTCAAGGAATAGCTGAGGAGCCAGAGA
 TCCAGATGGTT

ACGCGTACGCGGCCGCTCGAGCAGAAACTCATCTCAGAAGAGGATCTGGCAGCAAATGATATCCTGGATT
 ACAAGGATGACGACGATAAGGTTTAA

Protein Sequence:

>RC204050 protein sequence
 Red=Cloning site Green=Tags(s)

MPPPGKVPKRKENLWLQCEWGSFVCSSTMEKFFEHVTQHLQQLHGSGEIEEEDDPLEEEFSLWQE
 CGFCSLDSSADLIRHVYFHCYHTKLKQWGLQALQSQADLGPCILDFQSRNVIPDIPDHFLCLWEHCENSF
 DNPEWFYRHVEAHSQCCEYEAVGKDNPVVLCGWGCTCTFKDRSKLREHLRSHTQEKVVACPTCGGMFAN
 NTKFLDHIRRQTSLDQQHFQCSHCSCRFAERLLRDHMRNHVNHKCPCLDMTCLPSSLRNHMRFRHSE
 DRPFKDCDDYSCKNLIDLQKHLDTHEEPAYRCDFENCTFSARSLCSIKSHYRKVHEGDSEPRYKCHVC
 DKCFTRGNLTVHLRKKHQFKWPSGHPFRYKEHEDGYMRLQLVRYESVELTQQLLRQPQEGSGLGTSLN
 ESSLQGIILETVPGEPGRKEEEEGKSGEGTALSASQDNPSVIVVNVQNAQQQEIIVYVYLSEAPGEP
 PPVPEPPSGGIMEKLGIAEEPEIQMV

TRTRPLEQKLISEEDLAANDILDYKDDDDKV

Chromatograms:

https://cdn.origene.com/chromatograms/mk6566_b10.zip

Restriction Sites:

Sgfl-MluI

Cloning Scheme:


ACCN: NM_198971

ORF Size: 1551 bp

OTI Disclaimer: The molecular sequence of this clone aligns with the gene accession number as a point of reference only. However, individual transcript sequences of the same gene can differ through naturally occurring variations (e.g. polymorphisms), each with its own valid existence. This clone is substantially in agreement with the reference, but a complete review of all prevailing variants is recommended prior to use. [More info](#)

OTI Annotation: This clone was engineered to express the complete ORF with an expression tag. Expression varies depending on the nature of the gene.

Components: The ORF clone is ion-exchange column purified and shipped in a 2D barcoded Matrix tube containing 10ug of transfection-ready, dried plasmid DNA (reconstitute with 100 ul of water).

- Reconstitution Method:**
1. Centrifuge at 5,000xg for 5min.
 2. Carefully open the tube and add 100ul of sterile water to dissolve the DNA.
 3. Close the tube and incubate for 10 minutes at room temperature.
 4. Briefly vortex the tube and then do a quick spin (less than 5000xg) to concentrate the liquid at the bottom.
 5. Store the suspended plasmid at -20°C. The DNA is stable for at least one year from date of shipping when stored at -20°C.

RefSeq: [NM_198971.3](#)

RefSeq Size: 2257 bp

RefSeq ORF: 1554 bp

Locus ID: 25988

UniProt ID: [Q9BQA5](#)

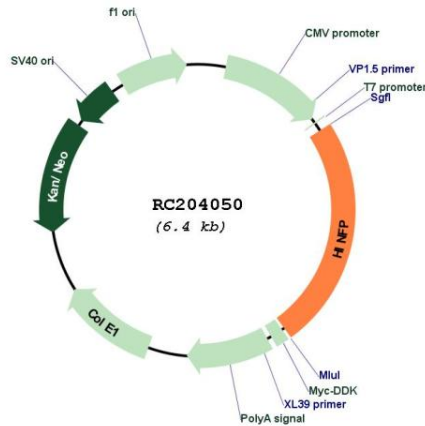
Cytogenetics: 11q23.3

Protein Families: Transcription Factors

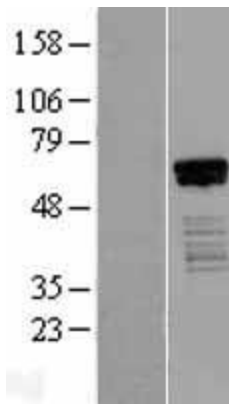
MW: 59.7 kDa

Gene Summary: This gene encodes a transcription factor that interacts with methyl-CpG-binding protein-2 (MBD2), a component of the MeCP1 histone deacetylase (HDAC) complex, and plays a role in DNA methylation and transcription repression. Alternatively spliced transcript variants have been found for this gene.[provided by RefSeq, Aug 2011]

Product images:



Circular map for RC204050



Western blot validation of overexpression lysate (Cat# [LY403692]) using anti-DDK antibody (Cat# [TA50011-100]). Left: Cell lysates from untransfected HEK293T cells; Right: Cell lysates from HEK293T cells transfected with RC204050 using transfection reagent MegaTran 2.0 (Cat# [TT210002]).