

Product datasheet for RC204045L1

14-3-3 sigma (SFN) (NM_006142) Human Tagged Lenti ORF Clone

Product data:

Product Type:	Expression Plasmids
Product Name:	14-3-3 sigma (SFN) (NM_006142) Human Tagged Lenti ORF Clone
Tag:	Myc-DDK
Symbol:	14-3-3 sigma
Synonyms:	YWHAS
Mammalian Cell Selection:	None
Vector:	pLenti-C-Myc-DDK (PS100064)
E. coli Selection:	Chloramphenicol (34 ug/mL)
ORF Nucleotide Sequence:	The ORF insert of this clone is exactly the same as(RC204045).
Restriction Sites:	SgfI-MluI
Cloning Scheme:	

Cloning sites used for ORF Shuttling:



* The last codon before the Stop codon of the ORF.

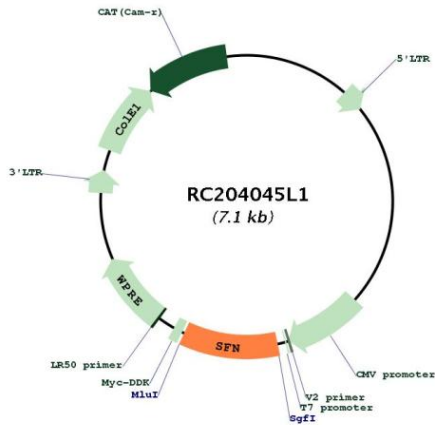
ACCN:	NM_006142
ORF Size:	744 bp



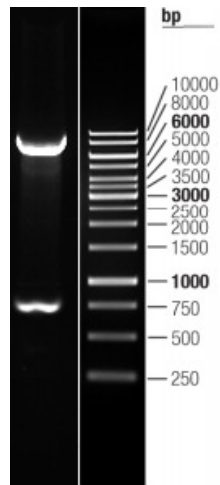
[View online >](#)

OTI Disclaimer:	The molecular sequence of this clone aligns with the gene accession number as a point of reference only. However, individual transcript sequences of the same gene can differ through naturally occurring variations (e.g. polymorphisms), each with its own valid existence. This clone is substantially in agreement with the reference, but a complete review of all prevailing variants is recommended prior to use. More info
OTI Annotation:	This clone was engineered to express the complete ORF with an expression tag. Expression varies depending on the nature of the gene.
Components:	The ORF clone is ion-exchange column purified and shipped in a 2D barcoded Matrix tube containing 10ug of transfection-ready, dried plasmid DNA (reconstitute with 100 ul of water).
Reconstitution Method:	<ol style="list-style-type: none">1. Centrifuge at 5,000xg for 5min.2. Carefully open the tube and add 100ul of sterile water to dissolve the DNA.3. Close the tube and incubate for 10 minutes at room temperature.4. Briefly vortex the tube and then do a quick spin (less than 5000xg) to concentrate the liquid at the bottom.5. Store the suspended plasmid at -20°C. The DNA is stable for at least one year from date of shipping when stored at -20°C.
RefSeq:	NM_006142.3
RefSeq Size:	1336 bp
RefSeq ORF:	747 bp
Locus ID:	2810
UniProt ID:	P31947
Cytogenetics:	1p36.11
Domains:	14-3-3
Protein Families:	Druggable Genome, Secreted Protein
Protein Pathways:	Cell cycle, p53 signaling pathway
MW:	27.8 kDa
Gene Summary:	This gene encodes a cell cycle checkpoint protein. The encoded protein binds to translation and initiation factors and functions as a regulator of mitotic translation. In response to DNA damage this protein plays a role in preventing DNA errors during mitosis. [provided by RefSeq, Aug 2017]

Product images:



Circular map for RC204045L1



Double digestion of RC204045L1 using Sgfl and MluI