

Product datasheet for **RC204037**

TLE 1 (TLE1) (NM_005077) Human Tagged ORF Clone

Product data:

Product Type:	Expression Plasmids
Product Name:	TLE 1 (TLE1) (NM_005077) Human Tagged ORF Clone
Tag:	Myc-DDK
Symbol:	TLE 1
Synonyms:	ESG; ESG1; GRG1
Mammalian Cell Selection:	Neomycin
Vector:	pCMV6-Entry (PS100001)
E. coli Selection:	Kanamycin (25 ug/mL)



[View online »](#)

ORF Nucleotide Sequence:

>RC204037 ORF sequence
 Red=Cloning site Blue=ORF Green=Tags(s)

TTTTGTAATACGACTCACTATAGGGCGGCCGGGAATTCGTCGACTGGATCCGGTACCGAGGAGATCTGCC
 GCC**CGGATCGCC**

ATGTTCCCGCAGAGCCGGCACCCGACCCGACCCGACCCAGGCTGCAGGCCAGCCCTTCAAGTTCACTATCCCGG
 AGTCCCTGGACCGGATTAAGAGGAATTCAGTTCCTGCAGGCGCAGTATCACAGCCTTAAATTGGAATG
 TGAAAACTGGCAAGTAAAAAGACAGAAATGCAGAGGCACTATGTGATGTATTATGAAATGTCATATGGA
 TTAACATTGAAATGCACAAACAGACTGAAATCGCCAAGAGATTGAATACGATTTGTGCACAAGTCATCC
 CATTTCTGTCTCAGGAACATCAACAACAGGTGGCCAGGCTGTTGAACGTGCCAAACAGGTGACCATGGC
 AGAGTTGAATGCCATCATCGGGCAGCAGAGTTGCAAGCTCAGCATCTTTCTCATGGCCACGGACCCCA
 GTTCCCTTACGCCTCACCTTCGGGACTTCAGCCTCCTGGAATCCCGCCCTCGGGGGCAGTGCCGGCC
 TTCTTGCCTGTCTAGTCTCTGAGTGGCAGTCTCACTTGGCAATAAAAGATGACAAGAAGCACCACGA
 TGCAGAGCACCACAGAGACAGAGAGCCGGGCACAAGTAATCCCTCCTGGTCCCAGACAGTCTAAGAGGC
 ACAGATAAACGCAGAAATGGACCTGAATTTTCCAATGACATCAAGAAAAGGAAGTGGATGATAAGGACT
 CCAGCCACTATGACAGTGTGGTGACAAAAGCGATGACAACCTTAGTTGTGGATGTGTCTAATGAGGACCC
 TTCTTCTCCGCGAGCAAGCCCTGCCACTCGCCCCGGGAAAATGGAATCGACAAAATCGCTGCTAAAG
 AAGGATGCTTCTAGCAGTCCAGCTTCCACGGCCTCCTCGCAAGTTCACCTTCTTTGAAATCCAAAGAAA
 TGAGCTTGCATGAAAAAGCCAGCAGCCTGTTCTGAAATCCAGCACACCAACGCCTCGGAGCGACATGCC
 AACGCCGGGCACCAGCGCCACTCCAGGCCTCCGTCCAGGTCTCGCAAGCCTCCAGCCATAGACCCCTC
 GTTAACCAAGCGGCAGCTGGCTTGAGGACACCCCTGGCAGTCCCAGGCCCATATCCTGCTCTTTTGGGA
 TGGTCCCCCAGCTGGCATGAACGGCGAGCTGACCAGCCAGGCGCTGCCTACGCCAGTTTACACAACAT
 GTCGCCCCAGATGAGCGCCGAGCCGCCGCGCCGCGCTGGTGGCTACGGGCGCTCCCCATGGTGGGG
 TTTGATCCTCCCCCTCACATGAGAGTACCTACCATTCTCCAACCTGGCAGGAATCCCTGGGGGAAAC
 CTGCATACTCCTTCCACGTTACTGCAGACGGTCAAGTGCAGCCTGTCCCTTTTCCCCCGACGCCCTCAT
 CGGACCCGGAATCCCCCGCATGCTCGCCAGATCAACACCCTCAACCACGGGGAGGTGGTGTGCGCTGTG
 ACCATCAGCAACCCACGAGACAGTGTACACAGGCGGGAAGGGTGCCTCAAGGTCTGGGACATCAGCC
 ACCCTGGCAATAAGAGCCCTGTCTCCAGCTCGACTGTCTGAACAGAGACAATTATCCGTTCTGTAA
 ATTGCTACCCGATGGCTGCACTCTCATAGTGGGAGGGGAAGCCAGTACTTTGTCCATTTGGGACCTGGCG
 GCTCCAACCCCGGCATCAAGGCGGAGCTGACGTCTCGGCCCGCCTGCTACGCCCTGGCCATCAGCC
 CCGATTCCAAGGTCTGCTTCTCATGCTGCAGCGACGGCAACATCGCTGTGTGGGATCTGCACAACAGAC
 ACTAGTGAGGCAATTCAGGGCCACACAGACGGAGCCAGCTGTATTGACATTTCTAATGATGGCACCAG
 CTCTGGACGGGTGGTTTGGACAACACAGTCAAGTCTGGGACCTGCGCGAGGGGGCGCAGCTGCAGCAGC
 ACGACTTACCTCCAGATCTTCTCCCTGGGTAAGTGCACCGGGGAGTGGCTGGCAGTGGGCATGGA
 GAGCAGCAATGTGGAGGTGCTGCAGTGAACAAGCCTGACAAGTACCAGCTGCACCTGCATGAGAGCTGC
 GTGCTGTCCCTGAAATTTGCTTACTGTGGTAAATGGTTTGTGAGTACTGGAAAAGATAACCTCCTCAATG
 CTTGGCGGACCCCTATGGAGCCAGCATATCCAGTCCAAGAGTCCCTCGTCAGTGCTTAGCTGTGACAT
 CTCTGTGGATGATAAGTACATAGTCACTGGCTCGGGGGACAAGAAGGCTACAGTCTATGAAGTCATCTAC

ACGCGTACGCGGCCGCTCGAGCAGAAACTCATCTCAGAAGAGGATCTGGCAGCAAATGATATCCTGGATT
 ACAAGGATGACGACGATAAGGTTTAA

Protein Sequence: >RC204037 protein sequence
Red=Cloning site Green=Tags(s)

MFPQSRHPTPHQAAGQPFFKFTIPESLDRIKEEFQFLQAQYHSLKLECEKLASEKTEMQRHYVMYEMSYG
LNIEMHKQTEIAKRLNTICAQVIPFLSQEHQQQVAQAVERAKQVTMAELNAIIGQQQLQAQHLSHGHGPP
VPLTPHPISGLQPPGIPPLGGSAGLLALSSALSGQSHLAIKDDKKHDAEHHRDREPGTNSLLVPDSLRLG
TDKRRNGPEFSNDIKKRKVDKSSHYSDGDKSDDNLVVDVSNEDPSSPRASPAHSPRENGIDKNRLLK
KDASSSPASTASSASSTSLKSKEMSLHEKASTPVLKSSPTPRSDMPTPGT SATPGLRPGLGKPPAIDPL
VNQAAAAGLRTP LAVPGYPAPFGMVPHAGMNGELTSPGAAAYASLHNMSPQMSAAAAAAAVVAYGRSPMVG
FDPPPHMRVPTIPPNLGIPGGKPAYSFHVTADGQMPPVFPDPDALIGPGIPRHARQINTLNHGEVYCAV
TISNPTRHVYTGKGCVKVWDISHPGNKSPVSLDCLNRDNYIRSCKLLPDGCTLIVGGEASTLSIWDLA
APTPRIKAELTSSAPACYALAI SPDSKVCFSCCSDGNIAVWDLHNQTLVRQFQGHTDGASCIDISNDGTK
LWTGGLDNTVRSWDLREGRQLQQHDFTSQIFSLGYCPTGEWLAVGMESSNVEVLHVNKPKDYQLHLHESC
VLSLKFAYCGKWFVSTGKDNLLNAWRTPYGASIFQSKESSVLSCDISVDDKYIVTGSDDKATVVEVIY

TRTRPLEQKLI SEEDLAANDILDYKDDDDKV

Chromatograms: https://cdn.origene.com/chromatograms/mk6258_a02.zip

Restriction Sites: SgfI-MluI

Cloning Scheme:



* The last codon before the Stop codon of the ORF

ACCN: NM_005077

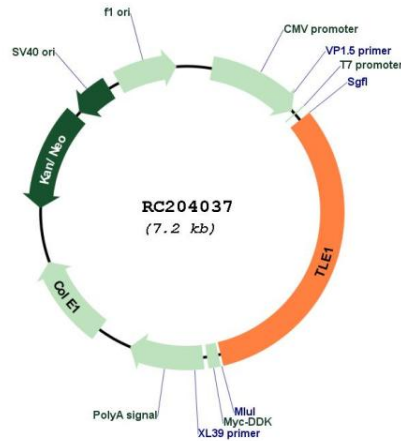
ORF Size: 2310 bp

OTI Disclaimer:	<p>Due to the inherent nature of this plasmid, standard methods to replicate additional amounts of DNA in E. coli are highly likely to result in mutations and/or rearrangements. Therefore, OriGene does not guarantee the capability to replicate this plasmid DNA. Additional amounts of DNA can be purchased from OriGene with batch-specific, full-sequence verification at a reduced cost. Please contact our customer care team at custsupport@origene.com or by calling 301.340.3188 option 3 for pricing and delivery.</p> <p>The molecular sequence of this clone aligns with the gene accession number as a point of reference only. However, individual transcript sequences of the same gene can differ through naturally occurring variations (e.g. polymorphisms), each with its own valid existence. This clone is substantially in agreement with the reference, but a complete review of all prevailing variants is recommended prior to use. More info</p>
OTI Annotation:	This clone was engineered to express the complete ORF with an expression tag. Expression varies depending on the nature of the gene.
Components:	The ORF clone is ion-exchange column purified and shipped in a 2D barcoded Matrix tube containing 10ug of transfection-ready, dried plasmid DNA (reconstitute with 100 ul of water).
Reconstitution Method:	<ol style="list-style-type: none"> 1. Centrifuge at 5,000xg for 5min. 2. Carefully open the tube and add 100ul of sterile water to dissolve the DNA. 3. Close the tube and incubate for 10 minutes at room temperature. 4. Briefly vortex the tube and then do a quick spin (less than 5000xg) to concentrate the liquid at the bottom. 5. Store the suspended plasmid at -20°C. The DNA is stable for at least one year from date of shipping when stored at -20°C.
Note:	Plasmids are not sterile. For experiments where strict sterility is required, filtration with 0.22um filter is required.
RefSeq:	NM_005077.3 , NP_005068.2
RefSeq Size:	3283 bp
RefSeq ORF:	2313 bp
Locus ID:	7088
UniProt ID:	Q04724
Cytogenetics:	9q21.32
Domains:	WD40, TLE_N
Protein Families:	Transcription Factors
MW:	83.2 kDa

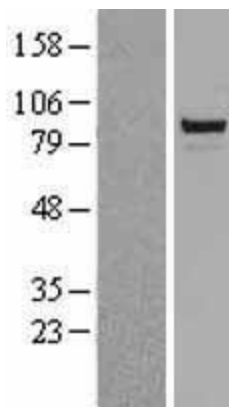
Gene Summary:

Transcriptional corepressor that binds to a number of transcription factors. Inhibits NF-kappa-B-regulated gene expression. Inhibits the transcriptional activation mediated by FOXA2, and by CTNNB1 and TCF family members in Wnt signaling. The effects of full-length TLE family members may be modulated by association with dominant-negative AES. Unusual function as coactivator for ESRRG.[UniProtKB/Swiss-Prot Function]

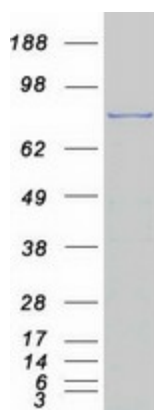
Product images:



Circular map for RC204037



Western blot validation of overexpression lysate (Cat# [LY417561]) using anti-DDK antibody (Cat# [TA50011-100]). Left: Cell lysates from untransfected HEK293T cells; Right: Cell lysates from HEK293T cells transfected with RC204037 using transfection reagent MegaTran 2.0 (Cat# [TT210002]).



Coomassie blue staining of purified TLE1 protein (Cat# [TP304037]). The protein was produced from HEK293T cells transfected with TLE1 cDNA clone (Cat# RC204037) using MegaTran 2.0 (Cat# [TT210002]).