

Product datasheet for **RC204036**

PACS1 (NM_018026) Human Tagged ORF Clone

Product data:

Product Type:	Expression Plasmids
Product Name:	PACS1 (NM_018026) Human Tagged ORF Clone
Tag:	Myc-DDK
Symbol:	PACS1
Synonyms:	MRD17; SHMS
Mammalian Cell Selection:	Neomycin
Vector:	pCMV6-Entry (PS100001)
E. coli Selection:	Kanamycin (25 ug/mL)



[View online »](#)

ORF Nucleotide
Sequence:

>RC204036 representing NM_018026
 Red=Cloning site Blue=ORF Green=Tags(s)

TTTTGTAATACGACTCACTATAGGGCGGCCGGGAATTCGTCGACTGGATCCGGTACCGAGGAGATCTGCC
 GCC**CGGATCGCC**

ATGGCGGAACCGGAGGGGGCGGGCGGTGGTCCCGAGGCGCCGGGGCGGCAGCGCCAGCGGGGATCCG
 GGGTCGCCCAGTCCCCTCAGCAGCCGCCCGCAGCAGCAGCAGCAGCCGCCGAGCAGCCAGCGCC
 CCCAAGCTGGCCAGGCCACCTCGTCGTCTCGTCCACCTCGGCGGCGGCTGCCTCCTCCTCGTCTCG
 TCTACCTCCACCTCCATGGCCGTGGCGGTGGCCTCGGGCTCCGCGCCTCCCGGTGGCCCGGGGCCAGGCC
 GCACCCCGCCCGGTGCAGATGAACCTGTACGCCACCTGGGAGGTGGACCGGAGCTCGTCCAGTGCCT
 GCCTAGGCTATTCAGCTTGACCCGAAGAACTCGTCATGCTAAAAGAAATGGACAAAGATCTTAACTCA
 GTGGTCATCGCTGTGAAGCTGCAGGGTTCAAAAAGAATTCTTCGTCACACGAGATCGTCTTCCAGCTA
 GTGGACTGGTGGAAACAGAGCTCCAATTAACCTTCTCCCTTCAGTACCCTCATTTCTTAAAGCGAGATGC
 CAACAAGCTGCAGATCATGCTGCAAAGGAGAAAACGTTACAAGAATCGGACCATCTTGGGCTATAAGACC
 TTGGCCGTGGGACTCATCAACATGGCAGAGGTGATGCAGCATCCTAATGAAGGCGCACTGGTGTGGCC
 TACACAGCAACGTGAAGGATGTCTCTGTGCCTGTGGCAGAAATAAAGATCTACTCCCTGTCCAGCCAACC
 CATTGACCATGAAGGAATCAAATCCAAGCTTTCTGATCGTTCTCCTGATATTGACAATTATTCTGAGGAA
 GAGGAAGAGAGTTTCTCATCAGAACAGGAAGGCAGTGTATGCCATTGCATGGGCAGGACTTGTCTACG
 AAGACGAAGATCTCCGAAAAGTGAAGAAGACCCGGAGGAACTAACCTCAACCTCTGCCATCACAAGGCA
 ACCTAACATCAAACAGAAGTTTGTGGCCCTCTGAAGCGGTTTAAAGTTTCAAGTGGAGTGGGCTTTGGG
 CTGGAGCATGTGTCCCGCAGCAGATCCGGGAAGTGAAGAGGACTTGGATGAATTGTATGACAGTCTGG
 AGATGTACAACCCAGCAGACATGGCCCTGAGATGGAGGAGACAGAAAGCATCCTCAGCAGCCAAAGCC
 CAAGCTCAAGCCTTTCTTTGAGGGGATGTCGAGTCCAGCTCCAGACGGAGATTGGCAGCCTCAACAGC
 AAAGGCAGCCTCGAAAAGACACCACCAGCCCTATGGAATTGGCTGCTCTAGAAAAAATTAATCTACTT
 GGATTA AAAAACAAGATGACAGCTTGACTGAAACAGACACTCTGGAAATCACTGACCAGGACATGTTTGG
 AGATGCCAGCACGAGTCTGGTTGTGCCGGAGAAAGTCAAACCTCCCATGAAGTCCAGTAAACCGGATCTC
 CAGGGCTCTGCCTCCCCAGCAAAGTGGAGGGGTGCACACCCCGGCAGAAAGAGGAGCAGCCCTGA
 AGGAGCGGCAGCTCTCAAGCCCTAAGTGAAGGACCAACAGTCCGACAGCGAGCGCTCCCCAGATCT
 GGGCCACAGCACGAGATTCCAAGAAAGTGGTGTATGACCAGCTCAATCAGATCCTGGTGTGAGATGCA
 GCCCTCCAGAAAATGTCATTCTGGTGAACACCCTGACTGGCAGGGCCAGTATGTGGCTGAGCTGCTCC
 AGGACCAGCGGAAGCCTGTGGTGTGCACCTGCTCCACCCTGGAGGTCCAGGCCGTGTGTCCGCCCTGCT
 CACCCGGATCCAGCGCTACTGCAACTGCAACTTCTCCATGCCGAGGCCAGTGAAGGTGGCTGCTGTGGGA
 GGCCAGAGCTACCTGAGCTCCATCCTCAGGTTCTTTGTCAAGTCCCTGGCCAACAAGACCTCCGACTGGC
 TTGGCTACATGCGCTTCTCATCATCCCCCTCGGTTCTCACCCCTGTGGCCAAACTTGGGGTCACTCGA
 CAGTAAATACAGTAGTTCCTTCTGGATTCTGGTTGGAGAGATCTGTTCAAGTCCGTCGGAGCCACCAGTG
 TCAGAGCAACTGGACGTGGCAGGGCGGGTGTGACAGTACGTCAACGGGGCAGCCACGACACACCAGCTTC
 CCGTGGCCGAAGCCATGCTGACTTGCCGGCATAAGTTCCTGATGAAGACTCCTATCAGAAGTTTATTCC
 CTTCAATTGGCGTGGTGAAGGTGGTCTGGTTGAAGACTCTCCCTCCACAGCAGGCCGATGGGAGCATTCT
 CCTGTGGTCAAGCCTTACTGTGCCCTCCACATCACACCCTCCAGCTCGGGCCTGAGCCGAGACGCCACGG
 CCACCCCTCCCTCCTCCCATCTATGAGCAGCGCCCTGGCCATCGTGGGAGCCCTAATAGCCCATATGG
 GGACGTGATTGGCCTCCAGGTGGACTACTGGTGGGCCACCCCGGGGAGCGGAGGAGGAAGGCGACAAG
 AGGGACGCCAGCTCGAAGAACACCCTCAAGAGTGTCTTCCGCTCAGTGCAGGTGTCCCGCTGCCCCATA
 GTGGGGAGGCCAGCTTTCTGGCACCATGGCCATGACTGTGGTCAACAAAGAAAAGAAACAAGAAAGTTCC
 CACCATCTTCTGAGCAAGAAACCCCGAGAAAAGGAGGTGGATTCTAAGAGCCAGGTCTTGAAGGCATC
 AGCCGCTCATCTGCTCAGCCAAGCAGCAGCAGACTATGCTGAGAGTGTCCATCGATGGGGTCAAGTGA
 GTGACATCAAGTCTTCCAGCTGGCAGCCAGTGGCCACCCATGTCAAGCACTTCCAGTGGGACTCTT
 CAGTGGCAGCAAGGCCACC

ACGCGTACGCGGCCGCTCGAGCAGAACTCATCTCAGAAGAGGATCTGGCAGCAAATGATATCCTGGATT
 ACAAGGATGACGACGATAAGGTTTAA

Protein Sequence: >RC204036 representing NM_018026
 Red=Cloning site Green=Tags(s)

MAERGGAGGGPGGAGGGSGQRGSGVAQSPQPPPPQQQQPPQPTPKLAQATSSSSSTSAAAASSSS
 STSTSMAVAVASGSAPPGGPGRTPAPVQMNLYATWEVDRSSSSCVPRFLSLTLKLVMLKEMDKDLNS
 VVIKAVKLQGSKRILRSNEIVLPASGLVETELQLTFLSLQYPHFLKRDANKLQIMLQRRKRYKNRILGYKT
 LAVGLINMAEVMQHPNEGALVGLHSNVKDVSVPAEIKIYSLSSQPIDHEGIKSKLSDRSPDIDNYSEE
 EEEFSSEQEGSDPLHGQDLFYEDDLRKYKTRRKLSTSAITRQPNIKQKVFALLKRFKVSDEVGFG
 LEHVSREQIREVEEDLDELVDSEMYNPSDGPMEETESILSTPKPKLPFFEGMSQSSSQTEIGSLNS
 KGLSGKDTTSPMELAALEKIKSTWIKNQDSDLTETDLEITDQDMFGDASTSLVVPEKVKTPMKSSKTDL
 QGSASPSKVEGVHTPRQKRSTPLKERQLSKPLSERTNSSDSERSPDLGHSTQIPRKVVYDQLNQILVSDA
 ALPENVILVNTTDWQGYVAELLQDQRKPVVCTCSTVEVQAVLSALLTRIQRYCNCNSSMPRPVKA
 AVGQSYLSSILRFFVKSLANKTSDWLYMRFLIIPLGSHPAKYLGVSVDKYSFSSFLDSGWRDLFSRSEPPV
 SEQLDVAGRVMQYVNGAATTHQLPVAEAMLTCHKFPDEDSYQKIPFVIGVVKVGLVEDSPSTAGD
 GDDSPVVSLTVPSTSPSSSGLSRDATATPPSSPSMSSALIVGSPNSPYGDVIGLQVDYWLGH
 PGERREGDKRDASSKNTLKS VFRS VQVSR LPHSGE AQLSGTMAMTVVTKENKKVPTIFLSK
 KPREKEVDSKSKVIEGISRLICSAKQQQTMLRVSIDGVEVSDIKFFQLAAQWPTHVKHFPVGLFSGSKAT

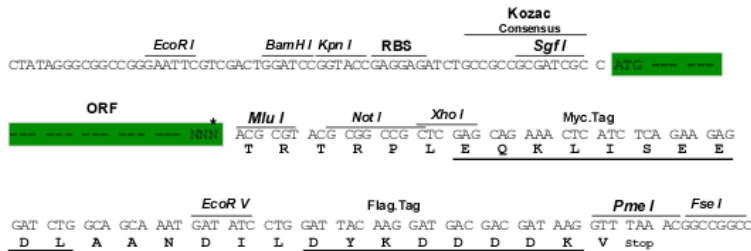
TRTRPLEQKLISEEDLAANDILDYKDDDDKV

Chromatograms: https://cdn.origene.com/chromatograms/mk8102_h12.zip

Restriction Sites: SgfI-MluI

Cloning Scheme:

Cloning sites used for ORF Shuttling:



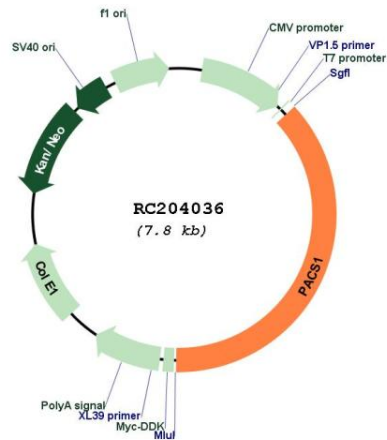
* The last codon before the Stop codon of the ORF

ACCN: NM_018026

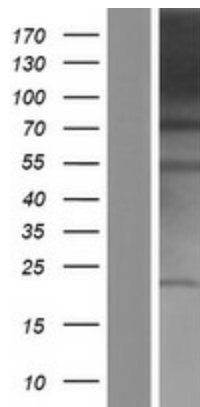
ORF Size: 2889 bp

OTI Disclaimer:	The molecular sequence of this clone aligns with the gene accession number as a point of reference only. However, individual transcript sequences of the same gene can differ through naturally occurring variations (e.g. polymorphisms), each with its own valid existence. This clone is substantially in agreement with the reference, but a complete review of all prevailing variants is recommended prior to use. More info
OTI Annotation:	This clone was engineered to express the complete ORF with an expression tag. Expression varies depending on the nature of the gene.
Components:	The ORF clone is ion-exchange column purified and shipped in a 2D barcoded Matrix tube containing 10ug of transfection-ready, dried plasmid DNA (reconstitute with 100 ul of water).
Reconstitution Method:	<ol style="list-style-type: none">1. Centrifuge at 5,000xg for 5min.2. Carefully open the tube and add 100ul of sterile water to dissolve the DNA.3. Close the tube and incubate for 10 minutes at room temperature.4. Briefly vortex the tube and then do a quick spin (less than 5000xg) to concentrate the liquid at the bottom.5. Store the suspended plasmid at -20°C. The DNA is stable for at least one year from date of shipping when stored at -20°C.
RefSeq:	NM_018026.4
RefSeq Size:	4511 bp
RefSeq ORF:	2892 bp
Locus ID:	55690
UniProt ID:	Q6VY07
Cytogenetics:	11q13.1-q13.2
MW:	104.9 kDa
Gene Summary:	This gene encodes a protein with a putative role in the localization of trans-Golgi network (TGN) membrane proteins. Mouse and rat homologs have been identified and studies of the homologous rat protein indicate a role in directing TGN localization of furin by binding to the protease's phosphorylated cytosolic domain. In addition, the human protein plays a role in HIV-1 Nef-mediated downregulation of cell surface MHC-I molecules to the TGN, thereby enabling HIV-1 to escape immune surveillance. [provided by RefSeq, Jul 2008]

Product images:



Circular map for RC204036



Western blot validation of overexpression lysate (Cat# [LY413366]) using anti-DDK antibody (Cat# [TA50011-100]). Left: Cell lysates from untransfected HEK293T cells; Right: Cell lysates from HEK293T cells transfected with RC204036 using transfection reagent MegaTran 2.0 (Cat# [TT210002]).