

Product datasheet for **RC204031**

NC2 alpha (DRAP1) (NM_006442) Human Tagged ORF Clone

Product data:

Product Type: Expression Plasmids
Product Name: NC2 alpha (DRAP1) (NM_006442) Human Tagged ORF Clone
Tag: Myc-DDK
Symbol: NC2 alpha
Synonyms: NC2-alpha
Mammalian Cell Selection: Neomycin
Vector: pCMV6-Entry (PS100001)
E. coli Selection: Kanamycin (25 ug/mL)
ORF Nucleotide Sequence: >RC204031 ORF sequence
 Red=Cloning site Blue=ORF Green=Tags(s)

TTTTGTAATACGACTCACTATAGGGCGGCCGGAATTCGTCGACTGGATCCGGTACCGAGGAGATCTGCC
 GCC**CGATCGCC**

ATGCCGAGCAAGAAGAAGTACAACGCGCGTTCCCGCGCGCGGATCAAGAAGATCATGCAGACGG
 ACGAAGAGATTGGGAAGGTGGCGCGCGGTGCCTGTATCATCTCCCGGCGCTCGAGCTTCTCTAGA
 GTCGCTGTTGAAGAAGCCTGCCAGGTGACCCAGTCGCGGAACCGAAGACCATGACCACATCCACCTG
 AAGCAGTGCATCGAGCTGGAGCAGCAGTTTACTTCTTGAAGGACCTGGTGGCATCTGTTCCCGACATGC
 AGGGGGACGGGAAGACAACCACATGGATGGGGACAAGGGCGCCCGCAGGGGCCGAAGCCAGGCAGCGG
 CGGCCGAAGAACGGTGGGATGGGAACGAAAAGCAAGGACAAGAAGCTGTCCGGGACAGACTCGGAGCAG
 GAGGATGAATCTGAGGACACAGATACTGATGGGGAAGAGGAGACATCACAAACCCCAACCCAGGCCAGCC
 ACCCCTCTGCCACTTTCAGAGCCCCCGACACCTTCTGCCCCTTCGCCTCTACTCTGCCTTTGCCCC
 AGCGCCCCGGGCCCTCAGCACCTGATGAAGAGGACGAAGAAGATTACGACTCC

ACGCGTACGCGGCCGCTCGAGCAGAACTCATCTCAGAAGAGGATCTGGCAGCAAATGATATCCTGGATT
 ACAAGGATGACGACGATAAGGTTTAA

Protein Sequence: >RC204031 protein sequence
 Red=Cloning site Green=Tags(s)

MPSKKKKYNARFPPARIKKIMQTDEEIGKVAAPVVIISRALELFLESLKACQVTSRNAKMTTSHL
 KQCIIELEQQDFLKDLDVASVPDMQGDGEDNHMDGDKGARRGRKPGSGGRKNGMGTKSKDKKLSGTDSEQ
 EDESEDTDTDGEETSQPPPPQASHPSAHFQSPPTPFLPFASLPLPPAPPGPSAPDEEDEEDYDS

TRTRPLEQKLISEEDLAANDILDYKDDDDKV



[View online »](#)

Chromatograms: https://cdn.origene.com/chromatograms/mk6058_f11.zip

Restriction Sites: SgfI-MluI

Cloning Scheme:



ACCN: NM_006442

ORF Size: 615 bp

OTI Disclaimer: The molecular sequence of this clone aligns with the gene accession number as a point of reference only. However, individual transcript sequences of the same gene can differ through naturally occurring variations (e.g. polymorphisms), each with its own valid existence. This clone is substantially in agreement with the reference, but a complete review of all prevailing variants is recommended prior to use. [More info](#)

OTI Annotation: This clone was engineered to express the complete ORF with an expression tag. Expression varies depending on the nature of the gene.

Components: The ORF clone is ion-exchange column purified and shipped in a 2D barcoded Matrix tube containing 10ug of transfection-ready, dried plasmid DNA (reconstitute with 100 ul of water).

Reconstitution Method:

1. Centrifuge at 5,000xg for 5min.
2. Carefully open the tube and add 100ul of sterile water to dissolve the DNA.
3. Close the tube and incubate for 10 minutes at room temperature.
4. Briefly vortex the tube and then do a quick spin (less than 5000xg) to concentrate the liquid at the bottom.
5. Store the suspended plasmid at -20°C. The DNA is stable for at least one year from date of shipping when stored at -20°C.

RefSeq: [NM_006442.4](#)

RefSeq Size: 1022 bp

RefSeq ORF: 618 bp

Locus ID: 10589

UniProt ID: [Q14919](#)

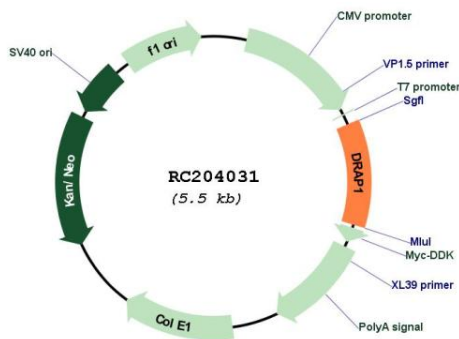
Cytogenetics: 11q13.1

Protein Families: Transcription Factors

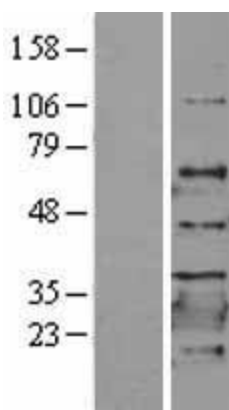
MW: 22.3 kDa

Gene Summary: Transcriptional repression is a general mechanism for regulating transcriptional initiation in organisms ranging from yeast to humans. Accurate initiation of transcription from eukaryotic protein-encoding genes requires the assembly of a large multiprotein complex consisting of RNA polymerase II and general transcription factors such as TFIIA, TFIIB, and TFIID. DR1 is a repressor that interacts with the TATA-binding protein (TBP) of TFIID and prevents the formation of an active transcription complex by precluding the entry of TFIIA and/or TFIIB into the preinitiation complex. The protein encoded by this gene is a corepressor of transcription that interacts with DR1 to enhance DR1-mediated repression. The interaction between this corepressor and DR1 is required for corepressor function and appears to stabilize the TBP-DR1-DNA complex. [provided by RefSeq, Jul 2008]

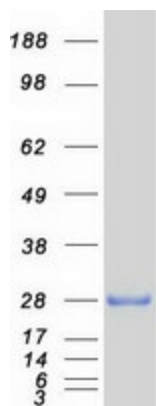
Product images:



Circular map for RC204031



Western blot validation of overexpression lysate (Cat# [LY401939]) using anti-DDK antibody (Cat# [TA50011-100]). Left: Cell lysates from untransfected HEK293T cells; Right: Cell lysates from HEK293T cells transfected with RC204031 using transfection reagent MegaTran 2.0 (Cat# [TT210002]).



Coomassie blue staining of purified DRAP1 protein (Cat# [TP304031]). The protein was produced from HEK293T cells transfected with DRAP1 cDNA clone (Cat# RC204031) using MegaTran 2.0 (Cat# [TT210002]).