

Product datasheet for **RC204029**

SAMM50 (NM_015380) Human Tagged ORF Clone

Product data:

Product Type:	Expression Plasmids
Product Name:	SAMM50 (NM_015380) Human Tagged ORF Clone
Tag:	Myc-DDK
Symbol:	SAMM50
Synonyms:	CGI-51; OMP85; SAM50; TOB55; TRG-3; YNL026W
Mammalian Cell Selection:	Neomycin
Vector:	pCMV6-Entry (PS100001)
E. coli Selection:	Kanamycin (25 ug/mL)



[View online »](#)

ORF Nucleotide Sequence:

>RC204029 ORF sequence
 Red=Cloning site Blue=ORF Green=Tags(s)

TTTTGTAATACGACTCACTATAGGGCGGCCGGAATTCGTCGACTGGATCCGGTACCGAGGAGATCTGCC
 GCC**CGCATCGCC**

ATGGGGACTGTGCACGCCCGGAGTTTGGAGCCTCTCCATCAAGTGGACCTGATTTTGGAGATTAGGAG
 AAGAAGCTGAATTTGTTGAAGTTGAGCCTGAAGCTAAACAGGAAATTCCTGAAAACAAAGATGTGGTTGT
 TCAACATGTTCAATTTGATGGACTTGAAGGACTAAAGATGATATCATCATTTTGTAAATTGGAGATGTT
 TTCAAGGCCAAAAACCTAATTGAGGTAATGCGGAAATCTCATGAAGCCCGTGAAAAATTGCTCCGCTTG
 GAATTTTGTAGACAAGTGGATGTTTTGATTGACACATGTCAAGGTGATGACGCACTTCCAAATGGTTTGA
 CGTTACCTTTGAAGTAACTGAATTGAGGAGATTAACGGGCAGTTATAACACCATGGTTGGAACAATGAA
 GGCAGTATGGTACTTGGCCTCAAGCTTCCTAATCTTCTGGTCTGCAGAAAAGGTGACCTTTCAGTTTT
 CCTATGGAACAAAAGAACTTCGTATGGCTGTCTTCTTCAAACCACGGCCCGAAACTTCGAAAGAAA
 TTTCTCTGTAACCTTATAAAAGTTACTGGACAGTTCCCTTGGAGCTCACTGCGGGAGACGGACAGAGGA
 ATGTCAGCTGAGTACAGTTTTCCATATGGAAGACCAGCCACACTGTCAAGTGGGAAAGCGTATGGCGAG
 AACTGGGCTGCCTCTCAAGGACGGCGTCATTTGCTGTTTCAAAAAGAAAGCGGACATTCAGTAAATCATC
 TCTTTCGACGCCATGGTCATCGATTCTCGAATCTTCCATCTTACCAAGGAGAGGTGCTTTGCTGAAA
 GTTAAACGGAAGTGGCAGGCTACACTGGCGGGATGTGAGCTTCATCAAAGAAGATTTGAACTTCAGT
 TGAACAAGCAACTCATATTTGATTGAGTTTTTTCAGCGCTTTCTGGGGCGGAATGTTGGTACCCATTGG
 TGATAAGCCGCAAGCATTGCTGATAGGTTTTACCTCGGGGACCCACAAGCGTCCGCGGATTGAGCATG
 CACAGCATCGGGCCACAGAGCGAAGGAGACTACCTAGGTGGAGAAGCGTACTGGCCGGCGGCTGCACC
 TCTACACCCATTACCTTTCCGGCCAGCCAGGTGGCTTTGGAGAAGTTCGGAACACTTTTCCGAACTTTCT
 CAACGCAGGAAACCTCTGCAACCTCAACTATGGGGAGGGCCCAAGCTCATATTCGTAAGCTGGCTGAG
 TGCATCCGCTGGTCTACGGGGCCGGGATTGCTCTCAGGCTTGGCAACATCGCTCGGTTGGAACCTAATT
 ACTGCGTCCCATGGGAGTACAGACAGGCGACAGGATATGTGATGGCGTCCAGTTTGGAGCTGGGATAAG
 GTTCCTG

ACGCGTACGCGGCCGCTCGAGCAGAAACTCATCTCAGAAGAGGATCTGGCAGCAAATGATATCCTGGATT
 ACAAGGATGACGACGATAAGGTTTAA

Protein Sequence:

>RC204029 protein sequence
 Red=Cloning site Green=Tags(s)

MGTVHARSLEPLPSSGPDFGGLGEEAEFVEVEPEAKQEILENKDVVVQHVHFDGLGRTKDDIIICEIGDV
 FKAKNLEIVMRKSHEAREKLLRLGIFRQVDVLDITCQGDALPNGLDVTFEVTELRRLTGSYNTMVGNN
 GSMVLGLKLPNLLGRAEKVTFQFSYGTETSYGLSFFKPRPGNFERNFSVNLKVTGQFPWSSLRETD
 MSAEYSFPIWKTSHTVKWEVWRELGLSRTASFVRKESGSHLSKSSLSHAMVIDSRNSSILPRRGALLK
 VNQELAGYTGDDVSFIKEDFELQLNKQLIFDSVFSASFVWGMLVPIGDKPSSIADRFYLGPTSVRGFSM
 HSIQPQSEGDYLGGEAYWAGGLHLYTPLFRPQGGFELFRTHFFLNAGNLCNLNYGEGPKAHIRKLA
 CIRWSYGAGIVLRLGNIARLELNYCVMGVQTDGDRICDGVQFGAGIRFL

TRTRPLEQKLISEEDLAANDILDYKDDDDKV

Chromatograms:

https://cdn.origene.com/chromatograms/mk6566_h12.zip

Restriction Sites:

Sgfl-MluI

Cloning Scheme:

Cloning sites used for ORF Shutting:


ACCN: NM_015380

ORF Size: 1407 bp

OTI Disclaimer: The molecular sequence of this clone aligns with the gene accession number as a point of reference only. However, individual transcript sequences of the same gene can differ through naturally occurring variations (e.g. polymorphisms), each with its own valid existence. This clone is substantially in agreement with the reference, but a complete review of all prevailing variants is recommended prior to use. [More info](#)

OTI Annotation: This clone was engineered to express the complete ORF with an expression tag. Expression varies depending on the nature of the gene.

Components: The ORF clone is ion-exchange column purified and shipped in a 2D barcoded Matrix tube containing 10ug of transfection-ready, dried plasmid DNA (reconstitute with 100 ul of water).

Reconstitution Method:

1. Centrifuge at 5,000xg for 5min.
2. Carefully open the tube and add 100ul of sterile water to dissolve the DNA.
3. Close the tube and incubate for 10 minutes at room temperature.
4. Briefly vortex the tube and then do a quick spin (less than 5000xg) to concentrate the liquid at the bottom.
5. Store the suspended plasmid at -20°C. The DNA is stable for at least one year from date of shipping when stored at -20°C.

RefSeq: [NM_015380.3](#), [NP_056195.2](#)
RefSeq Size: 1773 bp

RefSeq ORF: 1410 bp

Locus ID: 25813

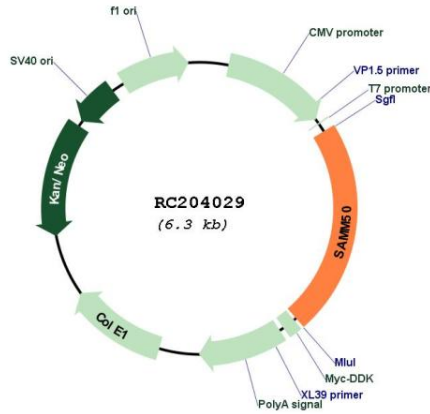
UniProt ID: [Q9Y512](#)
Cytogenetics: 22q13.31

Domains: Bac_surface_Ag

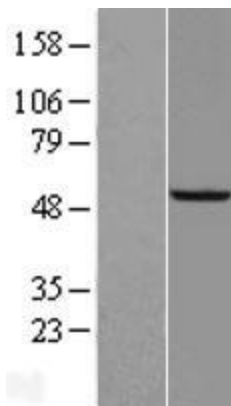
MW: 52 kDa

Gene Summary: This gene encodes a component of the Sorting and Assembly Machinery (SAM) of the mitochondrial outer membrane. The Sam complex functions in the assembly of beta-barrel proteins into the outer mitochondrial membrane.[provided by RefSeq, Jun 2011]

Product images:



Circular map for RC204029



Western blot validation of overexpression lysate (Cat# [LY414564]) using anti-DDK antibody (Cat# [TA50011-100]). Left: Cell lysates from untransfected HEK293T cells; Right: Cell lysates from HEK293T cells transfected with RC204029 using transfection reagent MegaTran 2.0 (Cat# [TT210002]).