

Product datasheet for **RC204028**

EIF4H (NM_031992) Human Tagged ORF Clone

Product data:

Product Type:	Expression Plasmids
Product Name:	EIF4H (NM_031992) Human Tagged ORF Clone
Tag:	Myc-DDK
Symbol:	EIF4H
Synonyms:	eIF-4H; WBSCR1; WSCR1
Mammalian Cell Selection:	Neomycin
Vector:	pCMV6-Entry (PS100001)
E. coli Selection:	Kanamycin (25 ug/mL)
ORF Nucleotide Sequence:	>RC204028 ORF sequence Red=Cloning site Blue=ORF Green=Tags(s)

TTTTGTAATACGACTCACTATAGGGCGCCGGAATTCGTCGACTGGATCCGGTACCGAGGAGATCTGCC
GCC**CGATCGCC**

ATGGCGGACTTCGACACCTACGACGATCGGGCCTACAGCAGCTTCGGCGGGCAGAGGGTCCCAGCGCA
GTGCTGGTGGCCATGGTCCCCTAGCCAGAAGGAGTTGCCACAGAGCCCCCTACACAGCATACTAGG
AAATCTACCTTTCAATACGGTTCAGGGCGACATAGATGCTATCTTTAAGGATCTCAGCATAAGGAGTGTA
CGGCTAGTCAGAGACAAAGACACAGATAAATTTAAAGGATTCTGCTATGTAGAATTCGATGAAGTGGATT
CCCTTAAGGAAGCCTTGACATACGATGGTGCACCTGTTGGGCGATCGGTCACCTTCGTGTGGACATTGCAGA
AGGCAGAAAACAAGATAAAGGTGGCTTTGGATTCAGAAAAGGTGGACCAGATGACAGAGGCTTCAGGGAT
GACTTCTTAGGGGGCAGGGGAGGTAGTCGCCAGGCGACCGGCGAACAGGCCCCCCCATGGGCAGCCGCT
TCAGAGATGGCCCTCCCCTCCGTGGATCCAACATGGATTTAGAGAACCCACAGAAGAGGAAAGAGCACA
GAGACCAGACTCCAGCTTAAACCTCGAACAGTCGCGACGCCCTCAATCAAGTAGCCAATCCCAACTCT
GCTATCTTCGGGGGTGCCAGGCCTAGAGAGGAAGTCGTTCAAAGGAGCAAGAA

ACGCGTACGCGGGCGCTCGAGCAGAAACTCATCTCAGAAGAGGATCTGGCAGCAAATGATATCTGGATT
ACAAGGATGACGACGATAAGGTTTAA



[View online »](#)

Protein Sequence: >RC204028 protein sequence
 Red=Cloning site Green=Tags(s)

MADFDTYDDRAYSSFGGGRGSRGSAGGHGSRSQKELPTEPPYTAYVGNLPFNTVQGDIDAIKDLIRS
 RLVVRDKDTKFKGFCYVEFDEVSLKEALTYDGALLGDRSLRVDIAEGRKQDKGGFGRKGGPDDRGFRD
 DFLGGRGSRPGDRRTGPPMGSFRFDGPPLRGSNMDFREPTTEERAQRRLQLKPRTVATPLNQVANPNS
 AIFGGARPREEVVQKEQE

TRTRPLEQKLISEEDLAANDILDYKDDDDKV

Chromatograms: https://cdn.origene.com/chromatograms/mk6422_d06.zip

Restriction Sites: SgfI-MluI

Cloning Scheme:

Cloning sites used for ORF Shuttling:



* The last codon before the Stop codon of the ORF

ACCN: NM_031992

ORF Size: 684 bp

OTI Disclaimer: The molecular sequence of this clone aligns with the gene accession number as a point of reference only. However, individual transcript sequences of the same gene can differ through naturally occurring variations (e.g. polymorphisms), each with its own valid existence. This clone is substantially in agreement with the reference, but a complete review of all prevailing variants is recommended prior to use. [More info](#)

OTI Annotation: This clone was engineered to express the complete ORF with an expression tag. Expression varies depending on the nature of the gene.

Components: The ORF clone is ion-exchange column purified and shipped in a 2D barcoded Matrix tube containing 10ug of transfection-ready, dried plasmid DNA (reconstitute with 100 ul of water).

Reconstitution Method:

1. Centrifuge at 5,000xg for 5min.
2. Carefully open the tube and add 100ul of sterile water to dissolve the DNA.
3. Close the tube and incubate for 10 minutes at room temperature.
4. Briefly vortex the tube and then do a quick spin (less than 5000xg) to concentrate the liquid at the bottom.
5. Store the suspended plasmid at -20°C. The DNA is stable for at least one year from date of shipping when stored at -20°C.

Note: Plasmids are not sterile. For experiments where strict sterility is required, filtration with 0.22um filter is required.

RefSeq: [NM_031992.2](#)

RefSeq Size: 2486 bp

RefSeq ORF: 687 bp

Locus ID: 7458

UniProt ID: [Q15056](#)

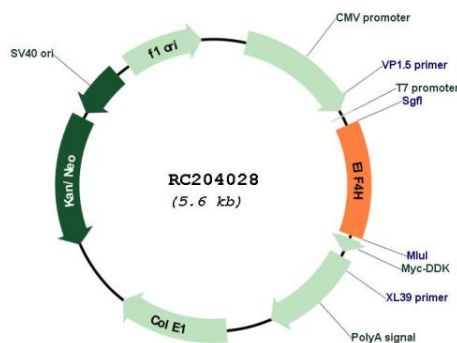
Cytogenetics: 7q11.23

Domains: RRM

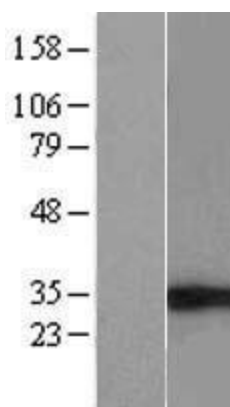
MW: 25.2 kDa

Gene Summary: This gene encodes one of the translation initiation factors, which functions to stimulate the initiation of protein synthesis at the level of mRNA utilization. This gene is deleted in Williams syndrome, a multisystem developmental disorder caused by the deletion of contiguous genes at 7q11.23. Alternative splicing of this gene generates 2 transcript variants. [provided by RefSeq, Jul 2008]

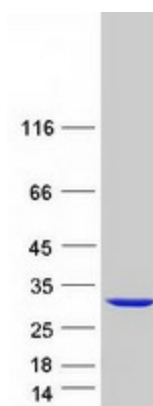
Product images:



Circular map for RC204028



Western blot validation of overexpression lysate (Cat# [LY410402]) using anti-DDK antibody (Cat# [TA50011-100]). Left: Cell lysates from untransfected HEK293T cells; Right: Cell lysates from HEK293T cells transfected with RC204028 using transfection reagent MegaTran 2.0 (Cat# [TT210002]).



Coomassie blue staining of purified EIF4H protein (Cat# [TP304028]). The protein was produced from HEK293T cells transfected with EIF4H cDNA clone (Cat# RC204028) using MegaTran 2.0 (Cat# [TT210002]).