

Product datasheet for **RC204026**

MED8 (NM_201542) Human Tagged ORF Clone

Product data:

Product Type: Expression Plasmids
Product Name: MED8 (NM_201542) Human Tagged ORF Clone
Tag: Myc-DDK
Symbol: MED8
Synonyms: ARC32
Mammalian Cell Selection: Neomycin
Vector: pCMV6-Entry (PS100001)
E. coli Selection: Kanamycin (25 ug/mL)
ORF Nucleotide Sequence: >RC204026 ORF sequence
 Red=Cloning site Blue=ORF Green=Tags(s)

TTTTGTAATACGACTCACTATAGGGCGGCCGGAATTCGTCGACTGGATCCGGTACCGAGGAGATCTGCC
 GCC**CGATCGCC**

ATGCGGCAGACTGAAGGACGGTGCCTGTTTTTCAGCCATGAGGTAGTCCCTGACCATCTGAGAACCAAGC
 CTGACCTGAAGTGAAGAACAGGAGAAGCACTGACGACAGATGCTGCCCGATTGGTGCAGATGCAGC
 CCAGAAGCAGATCCAGAGCTTGAATAAAATGTGTTCAAACCTTCTGGAGAAAATCAGCAAAGAGGAGCGA
 GAATCAGAGAGTGGAGGTCTCCGGCCGAACAAGCAGACCTTTAACCTACAGACACTAATGCCTTGGTGG
 CAGCTGTTGCCTTTGGAAAGGACTATCTAATTGGAGACCTTCAGGCAGCAGTGGTCTGGCCAGGCAGG
 CCAGCCAGGAGCTGGGACGATCCTTGCAGGAACCTCAGGATTACAGCAGGTGCAGATGGCAGGAGCTCCA
 AGCCAGCAGCAGCAATGCTCAGTGGGGTACAAATGGCTCAGGCAGGTCAACCAGGGAAAATGCCAAGTG
 GAATAAAAACCAACATCAAGTCGGCTTCCATGCATCCCTACCAGCGG

ACGCGTACGCGGCCGCTCGAGCAGAACTCATCTCAGAAGAGGATCTGGCAGCAAATGATATCCTGGATT
 ACAAGGATGACGACGATAAGGTTTAA

Protein Sequence: >RC204026 protein sequence
 Red=Cloning site Green=Tags(s)

MRQTEGRVPVFSHEVVPDHLRTPDPEVEEQEKQLTTDAARIGADAAQKQIQSLNKMCSNLLKISKEER
 ESESGLRPNKQTFNPTDTNALVAAVAFGKGLSNWRPSGSSGPGQAGQPGAGTILAGTSLQQVQMGAP
 SQQPMLSGVQMAQAGQPGKMPGSIKTNIKSASMPYQR

TRTRPLEQKLISEEDLAANDILDYKDDDDKV

Chromatograms: https://cdn.origene.com/chromatograms/mk6423_f12.zip



[View online »](#)

Restriction Sites: SgfI-MluI

Cloning Scheme:



ACCN: NM_201542

ORF Size: 537 bp

OTI Disclaimer: The molecular sequence of this clone aligns with the gene accession number as a point of reference only. However, individual transcript sequences of the same gene can differ through naturally occurring variations (e.g. polymorphisms), each with its own valid existence. This clone is substantially in agreement with the reference, but a complete review of all prevailing variants is recommended prior to use. [More info](#)

OTI Annotation: This clone was engineered to express the complete ORF with an expression tag. Expression varies depending on the nature of the gene.

Components: The ORF clone is ion-exchange column purified and shipped in a 2D barcoded Matrix tube containing 10ug of transfection-ready, dried plasmid DNA (reconstitute with 100 ul of water).

Reconstitution Method:

1. Centrifuge at 5,000xg for 5min.
2. Carefully open the tube and add 100ul of sterile water to dissolve the DNA.
3. Close the tube and incubate for 10 minutes at room temperature.
4. Briefly vortex the tube and then do a quick spin (less than 5000xg) to concentrate the liquid at the bottom.
5. Store the suspended plasmid at -20°C. The DNA is stable for at least one year from date of shipping when stored at -20°C.

RefSeq: [NM_201542.2](#), [NP_963836.1](#)

RefSeq Size: 1989 bp

RefSeq ORF: 807 bp

Locus ID: 112950

UniProt ID: [Q96G25](#)

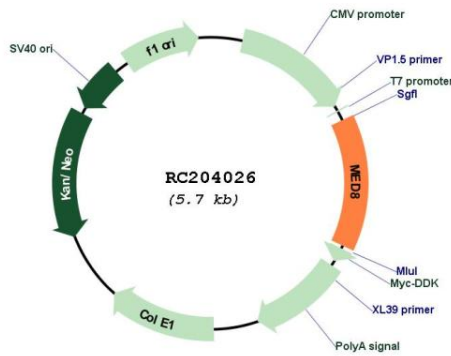
Cytogenetics: 1p34.2

Protein Families: Druggable Genome, Transcription Factors

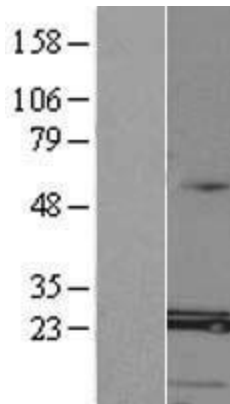
MW: 19 kDa

Gene Summary: This gene encodes a protein component of the mediator complex, which aids in transcriptional activation through interaction with RNA polymerase II and gene-specific transcription factors. The encoded protein may also function in ubiquitin ligation and protein degradation. Alternatively spliced transcript variants encoding multiple isoforms have been observed for this gene. [provided by RefSeq, Jan 2013]

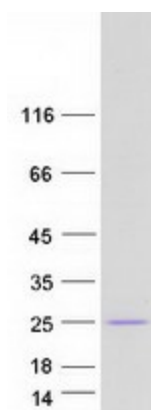
Product images:



Circular map for RC204026



Western blot validation of overexpression lysate (Cat# [LY424404]) using anti-DDK antibody (Cat# [TA50011-100]). Left: Cell lysates from untransfected HEK293T cells; Right: Cell lysates from HEK293T cells transfected with [RC218320] using transfection reagent MegaTran 2.0 (Cat# [TT210002]).



Coomassie blue staining of purified MED8 protein (Cat# [TP304026]). The protein was produced from HEK293T cells transfected with MED8 cDNA clone (Cat# RC204026) using MegaTran 2.0 (Cat# [TT210002]).