

Product datasheet for **RC204025**

FAM86A (EEF2KMT) (NM_201400) Human Tagged ORF Clone

Product data:

Product Type:	Expression Plasmids
Product Name:	FAM86A (EEF2KMT) (NM_201400) Human Tagged ORF Clone
Tag:	Myc-DDK
Symbol:	FAM86A
Synonyms:	eEF2-KMT; EFM3; FAM86A; SB153
Mammalian Cell Selection:	Neomycin
Vector:	pCMV6-Entry (PS100001)
E. coli Selection:	Kanamycin (25 ug/mL)
ORF Nucleotide Sequence:	>RC204025 ORF sequence Red=Cloning site Blue=ORF Green=Tags(s)

TTTTGTAATACGACTCACTATAGGGCGGCCGGAATTCGTCGACTGGATCCGGTACCGAGGAGATCTGCC
GCC**CGATCGCC**

ATGGCGCCCGAGGAGAACGCGGGGACCGAACTCTTGCTGCAGAGTTTCGAGCGCCGCTTCTGGCGGCAC
GCACACTGCGCTCCTTCCCCTGGCAGAGCTTAGAAGCAAAGTTAAGAGACTCATCAGATTCTGAGCTGCT
GCGGGATATTTGCACAAGACTGTGAAGCATCCTGTGTGTGAAGCACCCGCCCTCCGTCAAATATGCC
CGGTGCTTCTCTCAGAACTCATCAAAAAGCACAGGCTGTCCACACAGAGCCTTTGGACGAGCTGTATG
AAGCGCTGGCGGAGACCCTGATGGCCAAGGAGTCCACCCAGGGCCACCGAGCTATTTGCTGCCCTCGGG
AGGCTCGGTCACTCTCCGAGAGCACGGCCATCATCTCCTACGGTACCACAGGCCTGGTCACATGGGAC
GCCGCCCTCTACCTTGCAGAATGGGCCATCGAGAACCCGGCAGTCTTCACTAACAGGACTGTCTAGAGC
TTGGCAGTGGTGTGCTGGCCTCACAGGCCTGGCCATCTGCAAGATGTGCCGCCCCGGGCATACATCTTCAG
CGACTGTCACAGCCGGTCTTGGAGCAGCTCCGAGGGAATGTCCTTCTCAATGGCCTCTCATTAGAGGCA
GACATCACTGCCAAGTTAGACAGCCCCAGGGTGACAGTGGCCAGCTGGACTGGGACGTGCGGACGGTCC
ATCAGCTCTGCTTCCAGCCAGATGTTGTCAATTGCAGCAGATGTGCTGATTGCCAGAAGCCATCAT
GTCGCTGGTGGCGTCTGCGGAGGCTGGCTGCCTGCCGGGAGGACCAGCGGGCTCCTGAGGTCTACGTG
GCCTTTACCGTCCGCAACCCAGAGAGCTGCCAGCTGTTTACCACCGAGCTAGGCCGGCCGGGATCAGAT
GGGAAGTGGAACTCGTCATGAGCAGAACTGTTCCCTACGAAGAGCACTTGGAGATGGCAATGCTGAA
TCTCACCTG

ACGCGTACGCGGCCGCTCGAGCAGAACTCATCTCAGAAGAGGATCTGGCAGCAAATGATATCCTGGATT
ACAAGGATGACGACGATAAGGTTTAA



[View online »](#)

Protein Sequence: >RC204025 protein sequence
 Red=Cloning site Green=Tags(s)

MAPEENAGTELLQLSFERRFLAARTLRSFPWQSLEAKLRDSSSELLRDILHKTVKHPVCVKHPPSVKYA
 RCFLSELIKKHEAVHTEPLDEL YEALAEATLMAKESTQGHRSYLLPSGGSVTLSESTAIISYGTGLVTWD
 AALYLAEWAIENPAVFTNRTVLEL GSGAGLTGLAICKMCRPRAYIFSDCHSRVLEQLRGNVLLNGLSLEA
 DITAKLDSRPVTVAQLDWDVATVHQLSAFQPDVVIAADVLYCPEAIMSLVGVLRRLAACREDQRAPEVYV
 AFTVRNPETCQLFTTELGRAGIRWEVEPRHEQKLFPEEHELEMAMLNLT

TRTRPLEQKLISEEDLAANDILDYKDDDDKV

Chromatograms: https://cdn.origene.com/chromatograms/mk6423_a07.zip

Restriction Sites: SgfI-MluI

Cloning Scheme:



ACCN: NM_201400

ORF Size: 990 bp

OTI Disclaimer: The molecular sequence of this clone aligns with the gene accession number as a point of reference only. However, individual transcript sequences of the same gene can differ through naturally occurring variations (e.g. polymorphisms), each with its own valid existence. This clone is substantially in agreement with the reference, but a complete review of all prevailing variants is recommended prior to use. [More info](#)

OTI Annotation: This clone was engineered to express the complete ORF with an expression tag. Expression varies depending on the nature of the gene.

Components: The ORF clone is ion-exchange column purified and shipped in a 2D barcoded Matrix tube containing 10ug of transfection-ready, dried plasmid DNA (reconstitute with 100 ul of water).

Reconstitution Method:

1. Centrifuge at 5,000xg for 5min.
2. Carefully open the tube and add 100ul of sterile water to dissolve the DNA.
3. Close the tube and incubate for 10 minutes at room temperature.
4. Briefly vortex the tube and then do a quick spin (less than 5000xg) to concentrate the liquid at the bottom.
5. Store the suspended plasmid at -20°C. The DNA is stable for at least one year from date of shipping when stored at -20°C.

RefSeq: [NM_201400.4](#)

RefSeq Size: 2411 bp

RefSeq ORF: 993 bp

Locus ID: 196483

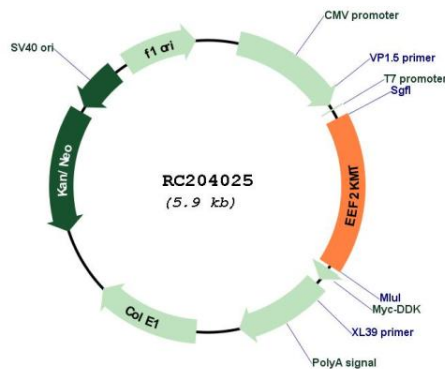
UniProt ID: [Q96G04](#)

Cytogenetics: 16p13.3

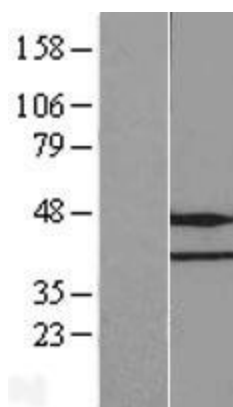
MW: 36.9 kDa

Gene Summary: Catalyzes the trimethylation of eukaryotic elongation factor 2 (EEF2) on 'Lys-525'.
[UniProtKB/Swiss-Prot Function]

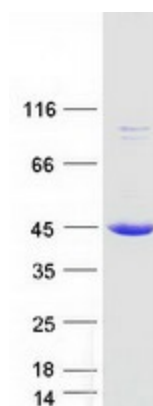
Product images:



Circular map for RC204025



Western blot validation of overexpression lysate (Cat# [LY404528]) using anti-DDK antibody (Cat# [TA50011-100]). Left: Cell lysates from untransfected HEK293T cells; Right: Cell lysates from HEK293T cells transfected with RC204025 using transfection reagent MegaTran 2.0 (Cat# [TT210002]).



Coomassie blue staining of purified EEF2KMT protein (Cat# [TP304025]). The protein was produced from HEK293T cells transfected with EEF2KMT cDNA clone (Cat# RC204025) using MegaTran 2.0 (Cat# [TT210002]).