

Product datasheet for RC204021L1

Inosine triphosphate pyrophosphatase (ITPA) (NM_033453) Human Tagged Lenti ORF Clone

Product data:

Product Type:	Expression Plasmids
Product Name:	Inosine triphosphate pyrophosphatase (ITPA) (NM_033453) Human Tagged Lenti ORF Clone
Tag:	Myc-DDK
Symbol:	Inosine triphosphate pyrophosphatase
Synonyms:	C20orf37; DEE35; dj79416.3; HLC14-06-P; ITPase; My049; NTPase
Mammalian Cell Selection:	None
Vector:	pLenti-C-Myc-DDK (PS100064)
E. coli Selection:	Chloramphenicol (34 ug/mL)
ORF Nucleotide Sequence:	The ORF insert of this clone is exactly the same as(RC204021).
Restriction Sites:	SgfI-MluI
Cloning Scheme:	

Cloning sites used for ORF Shuttling:



* The last codon before the Stop codon of the ORF.

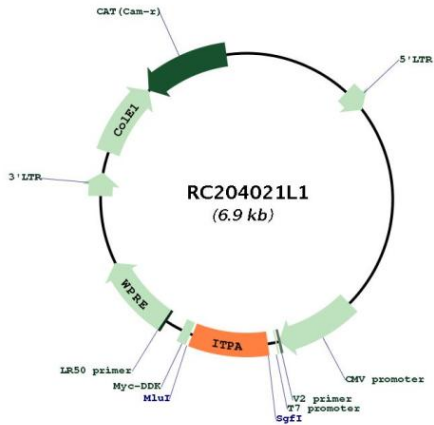
ACCN:	NM_033453
ORF Size:	582 bp



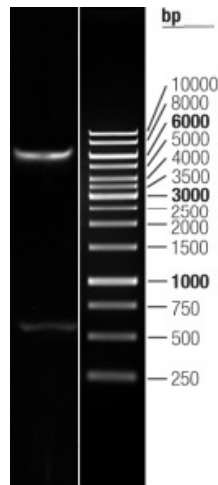
[View online »](#)

OTI Disclaimer:	The molecular sequence of this clone aligns with the gene accession number as a point of reference only. However, individual transcript sequences of the same gene can differ through naturally occurring variations (e.g. polymorphisms), each with its own valid existence. This clone is substantially in agreement with the reference, but a complete review of all prevailing variants is recommended prior to use. More info
OTI Annotation:	This clone was engineered to express the complete ORF with an expression tag. Expression varies depending on the nature of the gene.
Components:	The ORF clone is ion-exchange column purified and shipped in a 2D barcoded Matrix tube containing 10ug of transfection-ready, dried plasmid DNA (reconstitute with 100 ul of water).
Reconstitution Method:	<ol style="list-style-type: none">1. Centrifuge at 5,000xg for 5min.2. Carefully open the tube and add 100ul of sterile water to dissolve the DNA.3. Close the tube and incubate for 10 minutes at room temperature.4. Briefly vortex the tube and then do a quick spin (less than 5000xg) to concentrate the liquid at the bottom.5. Store the suspended plasmid at -20°C. The DNA is stable for at least one year from date of shipping when stored at -20°C.
RefSeq:	NM_033453.2
RefSeq Size:	1202 bp
RefSeq ORF:	585 bp
Locus ID:	3704
UniProt ID:	Q9BY32
Cytogenetics:	20p13
Domains:	Ham1p_like
Protein Families:	Druggable Genome
Protein Pathways:	Drug metabolism - other enzymes, Metabolic pathways, Purine metabolism, Pyrimidine metabolism
MW:	21.4 kDa
Gene Summary:	This gene encodes an inosine triphosphate pyrophosphohydrolase. The encoded protein hydrolyzes inosine triphosphate and deoxyinosine triphosphate to the monophosphate nucleotide and diphosphate. This protein, which is a member of the HAM1 NTPase protein family, is found in the cytoplasm and acts as a homodimer. Defects in the encoded protein can result in inosine triphosphate pyrophosphorylase deficiency which causes an accumulation of ITP in red blood cells. Alternate splicing results in multiple transcript variants. [provided by RefSeq, Jun 2012]

Product images:



Circular map for RC204021L1



Double digestion of RC204021L1 using SgfI and MluI