

Product datasheet for **RC204011**

SF20 (MYDGF) (NM_019107) Human Tagged ORF Clone

Product data:

Product Type: Expression Plasmids
Product Name: SF20 (MYDGF) (NM_019107) Human Tagged ORF Clone
Tag: Myc-DDK
Symbol: SF20
Synonyms: C19orf10; EUROIMAGE1875335; IL25; IL27; IL27w; R33729_1; SF20
Mammalian Cell Selection: Neomycin
Vector: pCMV6-Entry (PS100001)
E. coli Selection: Kanamycin (25 ug/mL)
ORF Nucleotide Sequence: >RC204011 ORF sequence
Red=Cloning site Blue=ORF Green=Tags(s)

TTTTGTAATACGACTCACTATAGGGCGGCCGGAATTCGTCGACTGGATCCGGTACCGAGGAGATCTGCC
GCC**CGATCGCC**

ATGGCGCGCCAGCGGAGGGTGAACGGCGTCGGCGGAGCTTGTGGCCGCGCTGCTCCTAGGGCCG
TGGCGCTGAGGCCGGGAGGCGGTGTCCGAGCCACGACGGTGGCGTTTGACGTGCGGCCCGCGCGCT
CGTGCAATCCTTCTCCATAACGTGGGCCGGGGACAATAACGTGTATGTTCACTTACGCCTCTCAA
GGAGGGACCAATGAGCAATGGCAGATGAGTCTGGGACCAGCGAAGACCACCAGCACTTACCTGCACCA
TCTGGAGGCCCGAGGGAAAGTCTATCTGTACTTACACAGTTCAAGGCAGAGGTGCGGGCGCTGAGAT
TGAGTACGCCATGCGCTACTCTAAAGCCGATTTGAAAGGGAAAGTGATGTCCTCTGAAAAGTGGAA
TTTGAAGTGACCAAAACAGCAGTGGCTCACAGGCCGGGGCATTCAAAGCTGAGCTGTCCAAGCTGGTGA
TTGTGGCCAAGGCATCGCGCACTGAGCTG

ACGCGTACGCGGCCGCTCGAGCAGAACTCATCTCAGAAGAGGATCTGGCAGCAAATGATATCCTGGATT
ACAAGGATGACGACGATAAGGTTTAA

Protein Sequence: >RC204011 protein sequence
Red=Cloning site Green=Tags(s)

MAAPSGGWNGV GASLWAALLLGAVALRPAEAVSEPTTVAFDVVRPGGVVHFSHNVGPGDKYTCMFTYASQ
GGTNEQWQMSLGTSEDHQHFTCTIWRPQKSYLYFTQFKAIEVARGAEIEYAMAYSKA AFERESDVPLKTEE
FEVTKTAVHRPGAFKAELSKLVIVAKASRTEL

TRTRPLEQKLISEEDLAANDILDYKDDDDKV

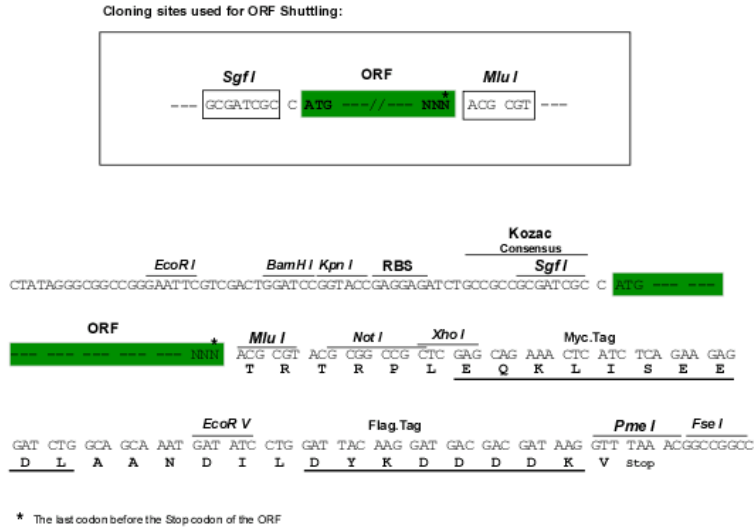
Chromatograms: https://cdn.origene.com/chromatograms/mk6058_b08.zip



[View online »](#)

Restriction Sites: SgfI-MluI

Cloning Scheme:



ACCN: NM_019107

ORF Size: 519 bp

OTI Disclaimer: The molecular sequence of this clone aligns with the gene accession number as a point of reference only. However, individual transcript sequences of the same gene can differ through naturally occurring variations (e.g. polymorphisms), each with its own valid existence. This clone is substantially in agreement with the reference, but a complete review of all prevailing variants is recommended prior to use. [More info](#)

OTI Annotation: This clone was engineered to express the complete ORF with an expression tag. Expression varies depending on the nature of the gene.

Components: The ORF clone is ion-exchange column purified and shipped in a 2D barcoded Matrix tube containing 10ug of transfection-ready, dried plasmid DNA (reconstitute with 100 ul of water).

Reconstitution Method:

1. Centrifuge at 5,000xg for 5min.
2. Carefully open the tube and add 100ul of sterile water to dissolve the DNA.
3. Close the tube and incubate for 10 minutes at room temperature.
4. Briefly vortex the tube and then do a quick spin (less than 5000xg) to concentrate the liquid at the bottom.
5. Store the suspended plasmid at -20°C. The DNA is stable for at least one year from date of shipping when stored at -20°C.

Note: Plasmids are not sterile. For experiments where strict sterility is required, filtration with 0.22um filter is required.

RefSeq: [NM_019107.4](#)

RefSeq Size: 1067 bp

RefSeq ORF: 522 bp

Locus ID: 56005

UniProt ID: [Q969H8](#)

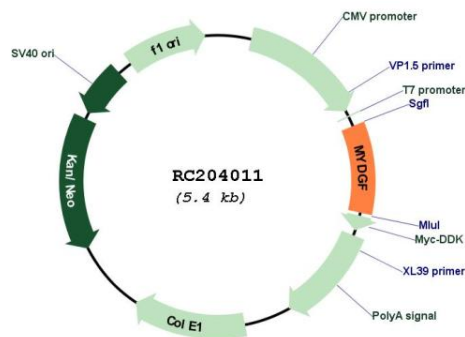
Cytogenetics: 19p13.3

Protein Families: Secreted Protein

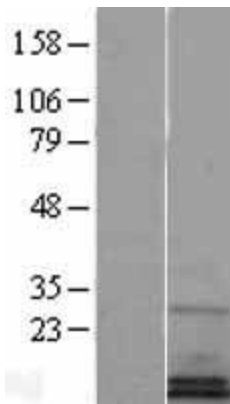
MW: 18.8 kDa

Gene Summary: The protein encoded by this gene was previously thought to support proliferation of lymphoid cells and was considered an interleukin. However, this activity has not been reproducible and the function of this protein is currently unknown. [provided by RefSeq, Jul 2008]

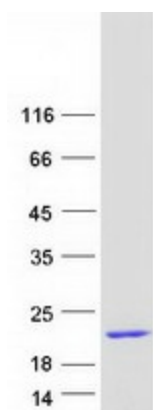
Product images:



Circular map for RC204011



Western blot validation of overexpression lysate (Cat# [LY402744]) using anti-DDK antibody (Cat# [TA50011-100]). Left: Cell lysates from untransfected HEK293T cells; Right: Cell lysates from HEK293T cells transfected with RC204011 using transfection reagent MegaTran 2.0 (Cat# [TT210002]).



Coomassie blue staining of purified MYDGF protein (Cat# [TP304011]). The protein was produced from HEK293T cells transfected with MYDGF cDNA clone (Cat# RC204011) using MegaTran 2.0 (Cat# [TT210002]).