

Product datasheet for **RC204006**

RPL11 (NM_000975) Human Tagged ORF Clone

Product data:

Product Type: Expression Plasmids

Tag: Myc-DDK

Symbol: RPL11

Synonyms: DBA7; GIG34; L11; uL5

Mammalian Cell Selection: Neomycin

Vector: pCMV6-Entry (PS100001)

E. coli Selection: Kanamycin (25 ug/mL)

ORF Nucleotide Sequence: >RC204006 ORF sequence
 Red=Cloning site Blue=ORF Green=Tags(s)

TTTTGTAATACGACTCACTATAGGGCGGCCGGAATTCGTCGACTGGATCCGGTACCGAGGAGATCTGCC
 GCC**CGGATCGCC**

ATGGCGGATCAAGGTGAAAAGGAGAACCCATGCGGGAACCTCGCATCCGAACTCTGTCTCAACATCT
 GTGTTGGGGAGAGTGGAGACAGACTGACGCGAGCAGCCAAGGTGTTGGAGCAGCTCACAGGGCAGACCCC
 TGTGTTTTCCAAAGCTAGATACACTGTCAGATCCTTTGGCATCCGGAGAAATGAAAAGATTGCTGTCCAC
 TGCACAGTTCGAGGGGCCAAGGCAGAAGAAATCTTGGAGAAGGGTCTAAAGGTGCGGGAGTATGAGTTAA
 GAAAAACAACCTCTCAGATACTGGAACTTTGGTTTGGGATCCAGGAACACATCGATCTGGGTATCAA
 ATATGACCCAAGCATTGGTATCTACGGCCTGGACTTCTATGTGGTGCTGGGTAGGCCAGGTTTCAGCATC
 GCAGACAAGAAGCGCAGGACAGGCTGCATTGGGGCCAAACACAGAATCAGCAAAGAGGAGCCATGCGCT
 GGTTCCAGCAGAAGTATGATGGGATCATCCTTCTGGCAA

ACGCGTACGCGGCCGCTCGAGCAGAACTCATCTCAGAAGAGGATCTGGCAGCAAATGATATCCTGGATT
 ACAAGGATGACGACGATAAGGTTTAA

Protein Sequence: >RC204006 protein sequence
 Red=Cloning site Green=Tags(s)

MADQGEKENPMRELRIKRLCLNICVGESGDRLTRAAKVLEQLTGQTPVFSKARYTVRSFGIRRNEKIAVH
 CTVRGAKAEIELEKGLKVREYELRKNFSDTGNFGFGIQEHIDLGKIDPSIGIYGLDFYVVLGRPFSI
 ADKKRRTGCIGAKHRISKEEAMRWFQKYDGIILPGK

TRTRPLEQKLISEEDLAANDILDYKDDDDKV

Chromatograms: https://cdn.origene.com/chromatograms/mk6058_c07.zip

Restriction Sites: SgfI-MluI



[View online »](#)

Cloning Scheme:



ACCN: NM_000975

ORF Size: 531 bp

OTI Disclaimer: The molecular sequence of this clone aligns with the gene accession number as a point of reference only. However, individual transcript sequences of the same gene can differ through naturally occurring variations (e.g. polymorphisms), each with its own valid existence. This clone is substantially in agreement with the reference, but a complete review of all prevailing variants is recommended prior to use. [More info](#)

OTI Annotation: This clone was engineered to express the complete ORF with an expression tag. Expression varies depending on the nature of the gene.

Components: The ORF clone is ion-exchange column purified and shipped in a 2D barcoded Matrix tube containing 10ug of transfection-ready, dried plasmid DNA (reconstitute with 100 ul of water).

Reconstitution Method:

1. Centrifuge at 5,000xg for 5min.
2. Carefully open the tube and add 100ul of sterile water to dissolve the DNA.
3. Close the tube and incubate for 10 minutes at room temperature.
4. Briefly vortex the tube and then do a quick spin (less than 5000xg) to concentrate the liquid at the bottom.
5. Store the suspended plasmid at -20°C. The DNA is stable for at least one year from date of shipping when stored at -20°C.

Note: Plasmids are not sterile. For experiments where strict sterility is required, filtration with 0.22um filter is required.

RefSeq Size: 644 bp

RefSeq ORF: 537 bp

Locus ID: 6135

UniProt ID: [P62913](#)

Cytogenetics: 1p36.11

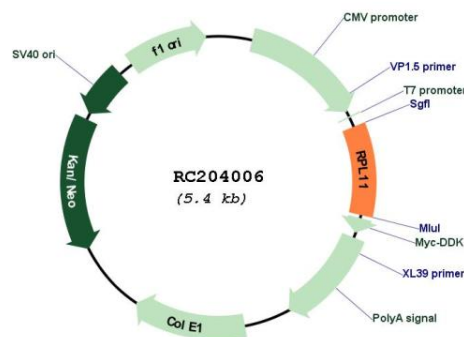
Domains: Ribosomal_L5

Protein Pathways: Ribosome

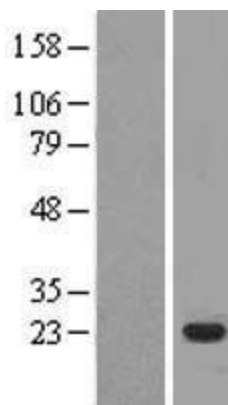
MW: 20.1 kDa

Gene Summary: Ribosomes, the organelles that catalyze protein synthesis, consist of a small 40S subunit and a large 60S subunit. Together these subunits are composed of 4 RNA species and approximately 80 structurally distinct proteins. This gene encodes a ribosomal protein that is a component of the 60S subunit. The protein belongs to the L5P family of ribosomal proteins. It is located in the cytoplasm. The protein probably associates with the 5S rRNA. Alternatively spliced transcript variants encoding different isoforms have been found for this gene. As is typical for genes encoding ribosomal proteins, there are multiple processed pseudogenes of this gene dispersed through the genome. [provided by RefSeq, Dec 2010]

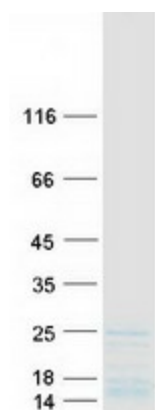
Product images:



Circular map for RC204006



Western blot validation of overexpression lysate (Cat# [LY424421]) using anti-DDK antibody (Cat# [TA50011-100]). Left: Cell lysates from untransfected HEK293T cells; Right: Cell lysates from HEK293T cells transfected with RC204006 using transfection reagent MegaTran 2.0 (Cat# [TT210002]).



Coomassie blue staining of purified RPL11 protein (Cat# [TP304006]). The protein was produced from HEK293T cells transfected with RPL11 cDNA clone (Cat# RC204006) using MegaTran 2.0 (Cat# [TT210002]).