

Product datasheet for **RC204000**

MRPS6 (NM_032476) Human Tagged ORF Clone

Product data:

Product Type: Expression Plasmids
Product Name: MRPS6 (NM_032476) Human Tagged ORF Clone
Tag: Myc-DDK
Symbol: MRPS6
Synonyms: C21orf101; MRP-S6; RPMS6; S6mt
Mammalian Cell Selection: Neomycin
Vector: pCMV6-Entry (PS100001)
E. coli Selection: Kanamycin (25 ug/mL)
ORF Nucleotide Sequence: >RC204000 ORF sequence
 Red=Cloning site Blue=ORF Green=Tags(s)

TTTTGTAAACGACTCACTATAGGGCGGCCGGAATTCGTCGACTGGATCCGGTACCGAGGAGATCTGCC
 GCC**CGGATCGCC**

ATGCCCGCTACGAGCTGGCTTTAATCCTGAAAGCCATGCAGCGGCCAGAGACTGCTGCTACTTTGAAAC
 GTACGATAGAGGCCCTGATGGACAGAGGAGCAATAGTGAGGGACTTGAAACCTGGGTGAACGAGCGCT
 TCCTTATAGGATCTCTGCCCACAGTCAGCAGCACAAACAGAGCGGGTATTTCTTGGTGGATTTTATGCA
 CCCACCGCAGCTGTTGAAAGCATGGTGGAGCACTTGTCTCGAGATATAGATGTGATTAGAGGGAATATTG
 TCAAACACCTCTGACCCAGGAATAAAGAATGTGAAGGATTGTCCAGTCCCACTCGCAGAAAAATT
 ATATTCCACAAAGAAGAGGAAGAAG

ACGCGTACGCGGCCGCTCGAGCAGAACTCATCTCAGAAGAGGATCTGGCAGCAATGATATCCTGGATT
 ACAAGGATGACGACGATAAGGTTTAA

Protein Sequence: >RC204000 protein sequence
 Red=Cloning site Green=Tags(s)

MPRYELALILKAMQRPETAATLKRTIEALMDRGAIVRDLENLGERALPYRISAHSQQHNRGGYFLVDFYA
 PTAAVESMVEHLSRDIDVIRGNIVKHPLTQELKECEGIVPPLAEKLYSTKKRKK

TRTRPLEQKLISEEDLAANDILDYKDDDDKV

Chromatograms: https://cdn.origene.com/chromatograms/mk6432_a06.zip

Restriction Sites: SgfI-MluI



View online »

Cloning Scheme:


ACCN: NM_032476

ORF Size: 375 bp

OTI Disclaimer: The molecular sequence of this clone aligns with the gene accession number as a point of reference only. However, individual transcript sequences of the same gene can differ through naturally occurring variations (e.g. polymorphisms), each with its own valid existence. This clone is substantially in agreement with the reference, but a complete review of all prevailing variants is recommended prior to use. [More info](#)

OTI Annotation: This clone was engineered to express the complete ORF with an expression tag. Expression varies depending on the nature of the gene.

Components: The ORF clone is ion-exchange column purified and shipped in a 2D barcoded Matrix tube containing 10ug of transfection-ready, dried plasmid DNA (reconstitute with 100 ul of water).

Reconstitution Method:

1. Centrifuge at 5,000xg for 5min.
2. Carefully open the tube and add 100ul of sterile water to dissolve the DNA.
3. Close the tube and incubate for 10 minutes at room temperature.
4. Briefly vortex the tube and then do a quick spin (less than 5000xg) to concentrate the liquid at the bottom.
5. Store the suspended plasmid at -20°C. The DNA is stable for at least one year from date of shipping when stored at -20°C.

Note: Plasmids are not sterile. For experiments where strict sterility is required, filtration with 0.22um filter is required.

RefSeq: [NM_032476.4](#)

RefSeq Size: 1017 bp

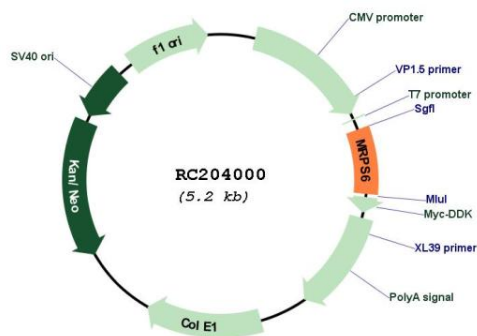
RefSeq ORF: 378 bp

Locus ID: 64968
 UniProt ID: [P82932](#)
 Cytogenetics: 21q22.11

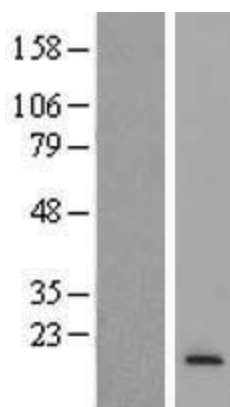
MW: 14.2 kDa

Gene Summary: Mammalian mitochondrial ribosomal proteins are encoded by nuclear genes and help in protein synthesis within the mitochondrion. Mitochondrial ribosomes (mitoribosomes) consist of a small 28S subunit and a large 39S subunit. They have an estimated 75% protein to rRNA composition compared to prokaryotic ribosomes, where this ratio is reversed. Another difference between mammalian mitoribosomes and prokaryotic ribosomes is that the latter contain a 5S rRNA. Among different species, the proteins comprising the mitoribosome differ greatly in sequence, and sometimes in biochemical properties, which prevents easy recognition by sequence homology. This gene encodes a 28S subunit protein that belongs to the ribosomal protein S6P family. Pseudogenes corresponding to this gene are found on chromosomes 1p and 12q. [provided by RefSeq, Jul 2008]

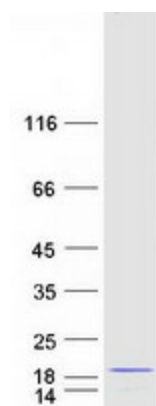
Product images:



Circular map for RC204000



Western blot validation of overexpression lysate (Cat# [LY410105]) using anti-DDK antibody (Cat# [TA50011-100]). Left: Cell lysates from untransfected HEK293T cells; Right: Cell lysates from HEK293T cells transfected with RC204000 using transfection reagent MegaTran 2.0 (Cat# [TT210002]).



Coomassie blue staining of purified MRPS6 protein (Cat# [TP304000]). The protein was produced from HEK293T cells transfected with MRPS6 cDNA clone (Cat# RC204000) using MegaTran 2.0 (Cat# [TT210002]).