

Product datasheet for **RC203996**

ALAS1 (NM_199166) Human Tagged ORF Clone

Product data:

Product Type:	Expression Plasmids
Product Name:	ALAS1 (NM_199166) Human Tagged ORF Clone
Tag:	Myc-DDK
Symbol:	ALAS1
Synonyms:	ALAS; ALAS-H; ALAS3; ALASH; MIG4
Mammalian Cell Selection:	Neomycin
Vector:	pCMV6-Entry (PS100001)
E. coli Selection:	Kanamycin (25 ug/mL)



[View online »](#)

ORF Nucleotide
Sequence:

>RC203996 ORF sequence
Red=Cloning site Blue=ORF Green=Tags(s)

TTTTGTAATACGACTCACTATAGGGCGGCCGGGAATTCGTCGACTGGATCCGGTACCGAGGAGATCTGCC
GCCGCGATCGCC

ATGGAGAGTGTGTTGTCGCCGCTGCCATTCTTATCCCAGTCCCCAGGCCTTTCTGCAGAAAGCAGGCA
AATCTCTGTTGTTCTATGCCAAAAGTCCCAAGATGATGGAAGTTGGGGCCAAGCCAGCCCTCGGGC
ATTGTCCACTGCAGCAGTACACTACCAACAGATCAAAGAAACCCCTCCGGCCAGTGAGAAAGACAAAAC
GCTAAGGCCAAGGTCCAACAGACTCCTGATGGATCCCAGCAGAGTCCAGATGGCACACAGCTTCCGTCTG
GACACCCCTTGCCTGCCACAAGCCAGGGCACTGCAAGCAAATGCCCTTCTCCAGCAGCAGATGAATCA
GAGAGGCAGCAGTGTCTTCTGCAAAGCCAGTCTTGAGCTTCAGGAGGATGTGCAGGAAATGAATGCCGTG
AGGAAAGAGGTTGCTGAAACCTCAGCAGGCCAGTGTGGTTAGTGTGAAAACCGATGGAGGGGATCCCA
GTGGACTGCTGAAGAACTCCAGGACATTATGCAAAGCAAAGACCAGAAAGAGTGTCTCATCTTCTTCA
AGATAACTTGCCAAAATCTGTTTCCACTTTTCAGTATGATCGTTTCTTTGAGAAAAAATGATGAGAAA
AAGAATGACCACACCTATCGAGTTTTTAAAAGTGTGAACCGCGCAGCACACATCTCCCCATGGCAGATG
ACTATTACAGACTCCCTCATCACCAAAAAGCAAGTGTGAGTCTGGTGCAGTAAAGTACTACCTAGGAATGAG
TCGCCACCCACGGGTGTGTGGGCACTTATGGACACTTTGAAACAACATGGTGTGGGGCAGGTGGTACT
AGAAATATTTCTGGAAGTAAATCCATGTGGACTTAGAGCGGGAGCTGGCAGACCTCCATGGGAAAAG
ATGCCGCACTCTGTTTTCTCGTGCTTTGTGGCCAATGACTCAACCCTTTCACCCTGGCTAAGATGAT
GCCAGGCTGTGAGATTTACTCTGATTCTGGGAACCATGCCTCCATGATCCAAGGGATTCGAAACAGCCGA
GTGCCAAAAGTACATCTTCCGCCACAATGATGTCAGCCACCTCAGAGAAGTGTGCAAAGATCTGACCCCT
CAGTCCCAAGATTGTGGCATTGAAACTGTCCATTCAATGGATGGGGCGGTGTGCCCACTGGAAGAGCT
GTGTGATGTGGCCATGAGTTTGGAGCAATCACCTTCGTGGATGAGGTCCACGCAGTGGGGCTTTATGGG
GCTCGAGGCGGAGGGATTGGGGATCGGGATGGAGTCATGCCAAAATGGACATCATTCTGGAACACTTG
GCAAAGCCTTTGGTTGTGTTGGAGGTACATCGCCAGCAGAGTCTCTGATTGACACCGTACGGTCCTA
TGCTGCTGGCTTCATCTTACCACCTCTCTGCCACCCATGCTGCTGGCTGGAGCCCTGGAGTCTGTGCGG
ATCCTGAAGAGCGCTGAGGGACGGGTGCTTCGCCGCCAGCACCAGCGCAACGTCAAACCTCATGAGACAGA
TGCTAATGGATGCCGGCCTCCCTGTTGTCCACTGCCCCAGCCACATCATCCCTGTGCGGGTTGCAGATGC
TGCTAAAAACACAGAAGTCTGTGATGAACTAATGAGCAGACATAACATCTACGTGCAAGCAATCAATTAC
CCTACGGTGGCCCGGGGAGAAGAGCTCCTACGGATTGCCCCACCCCTCACCACACACCCAGATGATGA
ACTACTTCTTGAGAATCTGCTAGTCACATGGAAGCAAGTGGGGCTGGAAGTGAAGCCTCATTCTCAGC
TGAGTGCAACTTCTGCAGGAGGCCACTGCATTTTGAAGTATGAGTGAAGAGAGAAGTCTATTCTCA
GGCTTGAGCAAGTTGGTATCTGCTCAGGCC

ACGCGTACGCGGCCGCTCGAGCAGAAAACCTCATCTCAGAAGAGGATCTGGCAGCAAATGATATCCTGGATT
ACAAGGATGACGACGATAAGGTTTAA

Reconstitution Method:

1. Centrifuge at 5,000xg for 5min.
2. Carefully open the tube and add 100ul of sterile water to dissolve the DNA.
3. Close the tube and incubate for 10 minutes at room temperature.
4. Briefly vortex the tube and then do a quick spin (less than 5000xg) to concentrate the liquid at the bottom.
5. Store the suspended plasmid at -20°C. The DNA is stable for at least one year from date of shipping when stored at -20°C.

RefSeq: [NM_199166.2](#)

RefSeq Size: 2281 bp

RefSeq ORF: 1923 bp

Locus ID: 211

UniProt ID: [P13196](#)

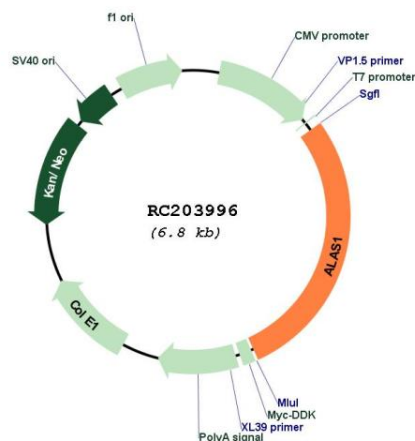
Cytogenetics: 3p21.2

Protein Pathways: Glycine, serine and threonine metabolism, Metabolic pathways, Porphyrin and chlorophyll metabolism

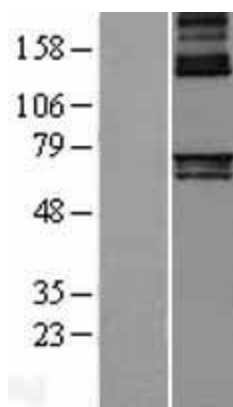
MW: 70.6 kDa

Gene Summary: This gene encodes the mitochondrial enzyme which catalyzes the rate-limiting step in heme (iron-protoporphyrin) biosynthesis. The enzyme encoded by this gene is the housekeeping enzyme; a separate gene encodes a form of the enzyme that is specific for erythroid tissue. The level of the mature encoded protein is regulated by heme: high levels of heme down-regulate the mature enzyme in mitochondria while low heme levels up-regulate. A pseudogene of this gene is located on chromosome 12. Alternative splicing results in multiple transcript variants encoding different isoforms. [provided by RefSeq, Jan 2015]

Product images:



Circular map for RC203996



Western blot validation of overexpression lysate (Cat# [LY404667]) using anti-DDK antibody (Cat# [TA50011-100]). Left: Cell lysates from untransfected HEK293T cells; Right: Cell lysates from HEK293T cells transfected with RC203996 using transfection reagent MegaTran 2.0 (Cat# [TT210002]).