

## Product datasheet for **RC203993**

### **CORO2A (NM\_052820) Human Tagged ORF Clone**

#### **Product data:**

Product Type:	Expression Plasmids
Product Name:	CORO2A (NM_052820) Human Tagged ORF Clone
Tag:	Myc-DDK
Symbol:	CORO2A
Synonyms:	CLIPINB; IR10; WDR2
Mammalian Cell Selection:	Neomycin
Vector:	pCMV6-Entry (PS100001)
E. coli Selection:	Kanamycin (25 ug/mL)



[View online »](#)

**ORF Nucleotide Sequence:**

>RC203993 ORF sequence  
 Red=Cloning site Blue=ORF Green=Tags(s)

TTTTGTAATACGACTCACTATAGGGCGGCCGGAATTCGTCGACTGGATCCGGTACCGAGGAGATCTGCC  
 GCC**CGGATCGCC**

ATGTCATGGCACCCAGTACCGAGCTCCAAGTTCGTCATGTCTTTGGCAAACAGCCAGCAAGGAGA  
 ACTGCTACGACTCCGTGCCTATCACCCGACGCTTCACGACAACCACTTCTGTGCCGTGAACCCCACTT  
 CATTGCAGTTGTGACTGAGTGTGCTGGTGGAGGGCCTTCTCGTCATCCCCCTGCACCAGACAGGGAAG  
 TTGGACCCCACTACCAAAAAGTCTGCGGGCACAGAGGCAACGTTTTGGATGTCAAGTGGAAACCTTTTG  
 ATGATTTTGGATCGCTCCTGTCTGAAGATGCCACAATTAAGATCTGGAGCATCCCCAAGCAGCTGCT  
 GACCAGGAACCTCACGGCTACAGGAAGAACTCGTGGGCCACGCGCAGAGTAGGCTGGTGGAGTGG  
 CACCCACGGCCCAACATCCTCTTCAAGTGTGCTATGACTACAAGGTGATGATCTGGAACCTGGATA  
 CAAAGGAGTCTGTCATCACAAGCCCATGAGTACAATTAGCTGTACCAAGATGTGATCCTCTCCATGTC  
 CTTCAACACCAACGGCAGCTGTTGGCCACCACCTGCAAAGACCGCAAGATTCGGGTTATTGACCCCGA  
 GCAGGGACCGTCTCCAGGAGGCCAGCTACAAAGGGCACCGGGCCAGCAAAGTGCTGTTTCTGGGGAACC  
 TGAAGAAGCTGATGTCCACAGGCACATCCCGATGGAACAACCGGCAGGTGGCCTTGTGGGACCAGGATAA  
 CCTCTCTGTGCCTCTGATGGAGGAGGACCTGGACGGCTCCTCGGGCGTGTGTTCCCTTCTATGACGCG  
 GACACCAGCATGCTCTACGTGGTGGGAAGGGAGATGGCAACATCCGCTACTACGAGGTGAGCGCCGACA  
 AGCCTCACCTGAGCTACCTGACTGAGTACCGCTCCTATAACCCACAGAAGGGGATCGGTGTATGCCAAA  
 GAGAGGACTCGACGTGCTCCTCCTGCGAGATCTCCGCTTCTACAAGCTGATCACAACCAAAAGCCTCATC  
 GAGCCCATCTCCATGATTGTGCCCGGGCGGTGAGAATCTACCAAGAGGACATATACCCCAACAGCAG  
 GGGCCACGCCCTCCCTGACGGCCAGGAGTGGCTCAGCGGGATGAATCGAGACCAATCCTGGTGTCCCT  
 TAGGCCTGGCTCTGAGCTGCTGAGACCCACCCACTGCCTGCAGAGAGACCTATCTTCAATTCCATGGCC  
 CCAGCCTCACCCGGCTCTTGAATCAGACAGAAAAGCTGGCTGCAGAAGATGGCTGGAGGTCTTCTCCC  
 TGTGGAGGAGAAGATGCCAAGGTGGGACGAGAACACAGGCTGGAGGAGAAGAAAACCTGGCTGACAAA  
 TGGCTTTGACGTTTTGAAATGCCCCCAACAAAGACAGAGAATGAGTTGCTGCAGATGTTCTACCGCAA  
 CAGGAGGAGATCCGAAGGCTCCGGGAGCTGTTGACCCAGCGAGAGGTCCAGGCCAAACAGTTGGAAGTGG  
 AGATCAAAAACCTGCGGATGGGCTCAGAGCAGCTC

**ACGCGT**ACGCGGCCGCTCGAGCAGAAACTCATCTCAGAAGAGGATCTGGCAGCAAATGATATCCTGGATT  
 ACAAGGATGACGACGATAAGGTTTAA

**Protein Sequence:**

>RC203993 protein sequence  
 Red=Cloning site Green=Tags(s)

MSWHPQYRSSKFRHVFVGKPAKENCYDVPITRSVHDNHFCAVNPHFIAVVTECAGGGAFLVIPLHQTKG  
 LDPHYPKVCGHRGNLVDKWNPFDDFEIASCSEDATIKIWSIPKQLLTRNLTAIRKELVGHARRVGLVEW  
 HPTAANILFSAGYDYKVMIWNLDTKESVITSPMSTISCHQDVILSMSFNTNGSLLATTCKDRKIRVIDPR  
 AGTVLQEASYKGRASKVFLGNLKKLMSTGTSRWNNRQVALWDQDNLVPLMEEDLDGSSGVLFPFYDA  
 DTSMLYVVGKGDGNIRYYEVSADKPHLSYLTEYRSYNPQKIGVMPKRGLDVSSCEIFRFYKLITTKSLI  
 EPI SMIVPRRSESYQEDIYPTAGAPSLTAQEWL SGMNRDPI LVSLRPGSELLRPHPLPAERPIFNSMA  
 PASPRLLNQTEKLAEDGWRSSLL EEKMPRWAAEHRLEEKKTWLTNGFDVFECPPPKTENELLQMFYRQ  
 QEEIRRLRELLTQREVQAKQLELEIKNLRMGSEQL

**TRTRPLEQKLI**SEEDLAANDILDYKDDDDKV

**Chromatograms:**

[https://cdn.origene.com/chromatograms/mk6155\\_a03.zip](https://cdn.origene.com/chromatograms/mk6155_a03.zip)

**Restriction Sites:**

Sgfl-Mlul

**Cloning Scheme:**


**ACCN:** NM\_052820

**ORF Size:** 1575 bp

**OTI Disclaimer:** The molecular sequence of this clone aligns with the gene accession number as a point of reference only. However, individual transcript sequences of the same gene can differ through naturally occurring variations (e.g. polymorphisms), each with its own valid existence. This clone is substantially in agreement with the reference, but a complete review of all prevailing variants is recommended prior to use. [More info](#)

**OTI Annotation:** This clone was engineered to express the complete ORF with an expression tag. Expression varies depending on the nature of the gene.

**Components:** The ORF clone is ion-exchange column purified and shipped in a 2D barcoded Matrix tube containing 10ug of transfection-ready, dried plasmid DNA (reconstitute with 100 ul of water).

- Reconstitution Method:**
1. Centrifuge at 5,000xg for 5min.
  2. Carefully open the tube and add 100ul of sterile water to dissolve the DNA.
  3. Close the tube and incubate for 10 minutes at room temperature.
  4. Briefly vortex the tube and then do a quick spin (less than 5000xg) to concentrate the liquid at the bottom.
  5. Store the suspended plasmid at -20°C. The DNA is stable for at least one year from date of shipping when stored at -20°C.

**RefSeq:** [NM\\_052820.4](#)

**RefSeq Size:** 5507 bp

**RefSeq ORF:** 1578 bp

**Locus ID:** 7464

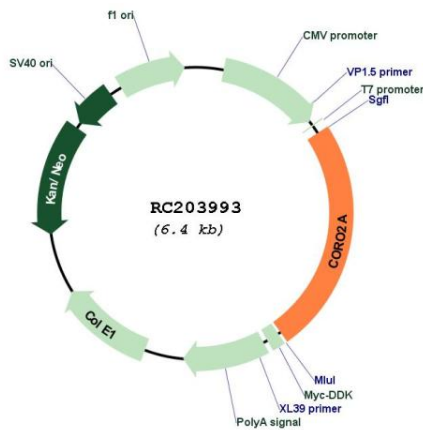
**UniProt ID:** [Q92828](#)

**Cytogenetics:** 9q22.33

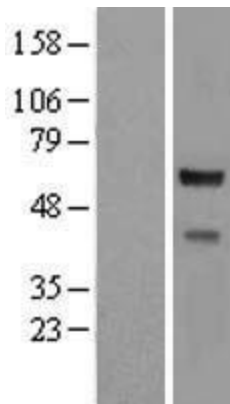
**Domains:** WD40  
**MW:** 59.8 kDa

**Gene Summary:** This gene encodes a member of the WD repeat protein family. WD repeats are minimally conserved regions of approximately 40 amino acids typically bracketed by gly-his and trp-aspartic acid (GH-WD), which may facilitate formation of heterotrimeric or multiprotein complexes. Members of this family are involved in a variety of cellular processes, including cell cycle progression, signal transduction, apoptosis, and gene regulation. This protein contains 5 WD repeats, and has a structural similarity with actin-binding proteins: the *D. discoideum* coronin and the human p57 protein, suggesting that this protein may also be an actin-binding protein that regulates cell motility. Alternative splicing of this gene generates 2 transcript variants. [provided by RefSeq, Jul 2008]

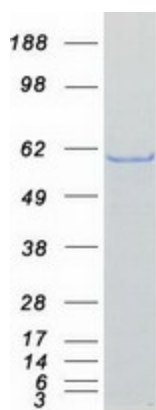
**Product images:**



Circular map for RC203993



Western blot validation of overexpression lysate (Cat# [LY403258]) using anti-DDK antibody (Cat# [TA50011-100]). Left: Cell lysates from untransfected HEK293T cells; Right: Cell lysates from HEK293T cells transfected with RC203993 using transfection reagent MegaTran 2.0 (Cat# [TT210002]).



Coomassie blue staining of purified CORO2A protein (Cat# [TP303993]). The protein was produced from HEK293T cells transfected with CORO2A cDNA clone (Cat# RC203993) using MegaTran 2.0 (Cat# [TT210002]).