

Product datasheet for RC203992

TIMM17B (NM_005834) Human Tagged ORF Clone

Product data:

Product Type: Expression Plasmids
Product Name: TIMM17B (NM_005834) Human Tagged ORF Clone
Tag: Myc-DDK
Symbol: TIMM17B
Synonyms: DXS9822; JM3; TIM17B
Mammalian Cell Selection: Neomycin
Vector: pCMV6-Entry (PS100001)
E. coli Selection: Kanamycin (25 ug/mL)
ORF Nucleotide Sequence: >RC203992 ORF sequence
 Red=Cloning site Blue=ORF Green=Tags(s)

TTTTGTAATACGACTCACTATAGGGCGCCGGGAATTCGTCGACTGGATCCGGTACCGAGGAGATCTGCC
 GCC**CGATCGCC**

ATGGAGGAGTACGCTCGGGAGCCCTGCCCATGGCGAATTGTGGATGATTGCGGTGGAGCCTTCACTATGG
 GTGTCATCGTGGCGGAGTCTCCAGGCCATCAAGGGTTCCGCAATGCCCTGTTGGAATTCGGCACCG
 GTTGAGAGGTAGTCCAATGCTGTGAGGATCCGAGCCCCAGATTGGAGGTAGCTTCGCAGTGTGGGG
 GGCTGTTCTCCACCATTGACTGTGCCCTGGTGGCTTCGGGGCAAGGAGGATCCCTGGAACCTATCA
 CCAGTGGAGCATTGACCGGGGCTGTGCTGGCTGCCCGCAGTGGCCACTGGCCATGGTGGGCTCAGCAAT
 GATGGGGGCATCCTGTTGGCCCTATTGAGGGGTTGGCATCCTCCTACTCGCTACACAGCCCAGCAG
 TTCGAAATGCGCCCCATTCTGGAGGACCCAGCCAGCTGCCCCCTAAGGATGGCACCCCGGCCCCAG
 GCTACCCAGCTATCAGCAGTACCAC

ACGCGTACGCGGCCGCTCGAGCAGAACTCATCTCAGAAGAGGATCTGGCAGCAAATGATATCCTGGATT
 ACAAGGATGACGACGATAAGGTTTAA

Protein Sequence: >RC203992 protein sequence
 Red=Cloning site Green=Tags(s)

MEEYAREPCPWRIVDDCGGAFTMGVIGGGVFQAIKGFNAPVGIHRHLRGSANAVRIRAPQIGGSFAVWG
 GLFSTIDCGLVRLRGKEDPWSITSGALTGAVLAARSGPLAMVGSAMMGILLALIEVVGILLTRYTAQQ
 FRNAPPFLEDPSQLPPKDGTPAPGYPSYQQYH

TRTRPLEQKLISEEDLAANDILDYKDDDDKV

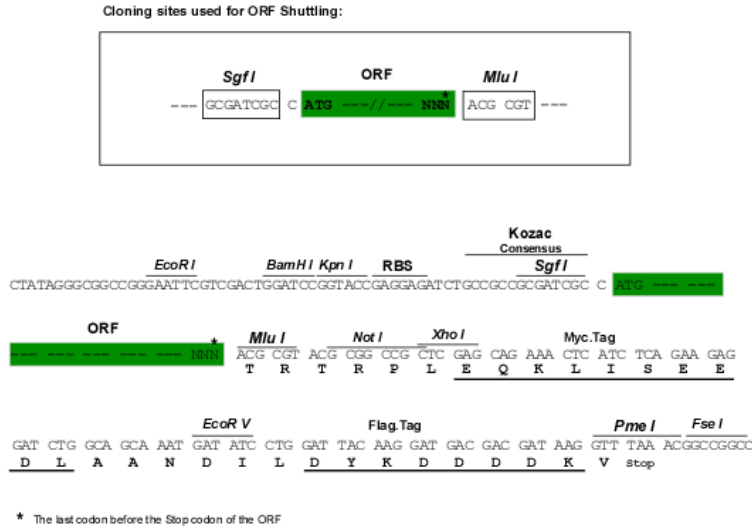
Chromatograms: https://cdn.origene.com/chromatograms/mk6422_c12.zip



[View online »](#)

Restriction Sites: SgfI-MluI

Cloning Scheme:



ACCN: NM_005834

ORF Size: 516 bp

OTI Disclaimer: The molecular sequence of this clone aligns with the gene accession number as a point of reference only. However, individual transcript sequences of the same gene can differ through naturally occurring variations (e.g. polymorphisms), each with its own valid existence. This clone is substantially in agreement with the reference, but a complete review of all prevailing variants is recommended prior to use. [More info](#)

OTI Annotation: This clone was engineered to express the complete ORF with an expression tag. Expression varies depending on the nature of the gene.

Components: The ORF clone is ion-exchange column purified and shipped in a 2D barcoded Matrix tube containing 10ug of transfection-ready, dried plasmid DNA (reconstitute with 100 ul of water).

Reconstitution Method:

1. Centrifuge at 5,000xg for 5min.
2. Carefully open the tube and add 100ul of sterile water to dissolve the DNA.
3. Close the tube and incubate for 10 minutes at room temperature.
4. Briefly vortex the tube and then do a quick spin (less than 5000xg) to concentrate the liquid at the bottom.
5. Store the suspended plasmid at -20°C. The DNA is stable for at least one year from date of shipping when stored at -20°C.

Note: Plasmids are not sterile. For experiments where strict sterility is required, filtration with 0.22um filter is required.

RefSeq: [NM_005834.3](#)

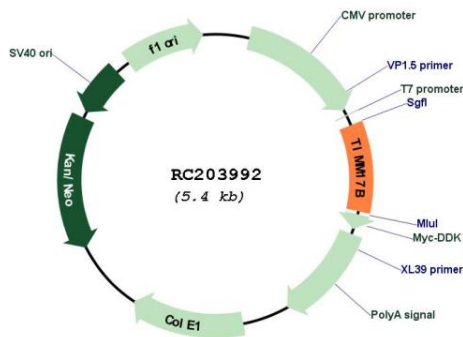
RefSeq Size: 967 bp

RefSeq ORF: 519 bp

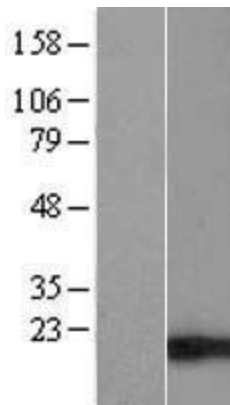
Locus ID: 10245
UniProt ID: [O60830](#)
Cytogenetics: Xp11.23
Domains: Tim17
Protein Families: Transmembrane
MW: 18.3 kDa

Gene Summary: This gene encodes a multipass transmembrane protein that forms an integral component of the mitochondrial translocase TIM23 complex. This complex facilitates the transport of mitochondrial proteins from the cytosol across the mitochondrial inner membrane and into the mitochondrion. There is a pseudogene for this gene on chromosome 12. Alternative splicing results in multiple transcript variants. [provided by RefSeq, Aug 2013]

Product images:



Circular map for RC203992



Western blot validation of overexpression lysate (Cat# [LY417021]) using anti-DDK antibody (Cat# [TA50011-100]). Left: Cell lysates from untransfected HEK293T cells; Right: Cell lysates from HEK293T cells transfected with RC203992 using transfection reagent MegaTran 2.0 (Cat# [TT210002]).