

Product datasheet for **RC203991**

FHL3 (NM_004468) Human Tagged ORF Clone

Product data:

Product Type: Expression Plasmids
Product Name: FHL3 (NM_004468) Human Tagged ORF Clone
Tag: Myc-DDK
Symbol: FHL3
Synonyms: SLIM2
Mammalian Cell Selection: Neomycin
Vector: pCMV6-Entry (PS100001)
E. coli Selection: Kanamycin (25 ug/mL)
ORF Nucleotide Sequence: >RC203991 ORF sequence
Red=Cloning site Blue=ORF Green=Tags(s)

TTTTGTAATACGACTCACTATAGGGCGCCGGGAATTCGTCGACTGGATCCGGTACCGAGGAGATCTGCC
GCC**CGGATCGCC**

ATGAGCGAGTCATTTGACTGTGCAAAAATGCAACGAGTCCCTGTATGGACGCAAGTACATCCAGACAGACA
GCGGCCCTACTGTGTGCCCTGCTATGACAATACCTTTGCCAACACCTGTGCTGAGTGCCAGCAGCTTAT
CGGGCATGACTCGAGGGAGCTGTTCTATGAAGACCGCCATTTCCACGAGGGCTGCTTCCGCTGCTGCCGC
TGCCAGCGCTCACTAGCCGATGAACCTTCACCTGCCAGGACAGTGAGCTGCTCTGCAATGACTGCTACT
GCAGTGCCTTTTCTCGCAGTGTCCGCTTGTGGGGAGACTGTGATGCCTGGTCCCGGAAGCTGGAATA
TGGAGGCCAGACATGGCATGAGCACTGCTTCTGTGAGTGGCTGTGAACAGCCACTGGGCTCCCGTTCT
TTTGTGCCGACAAGGGTGTCACTACTGCGTGCCTGCTATGAGAACAAGTTTGCTCCTCGCTGCGCCC
GCTGCAGCAAGACGCTGACACAGGGTGGAGTGACATACCGTGATCAGCCGTGGCATCGAGAATGTCTGGT
CTGTACCGGATGCCAGACGCCCCGGCAGGGCAGCAGTTCACCTCCCGGGATGAAGATCCCTACTGTGTG
GCCTGTTTTGGAGAACTTTGCACCTAAGTGACGAGCTGCAAGCGCCCCATCGTAGGACTCGGTGGAG
GCAAGTATGTGTCCTTTGAAGACCGACTGGCACCACAAGTCTTCTCCTGCGCCCGTGTCTACCTC
CCTGGTGGCCAGGGCTTCGTACCGGATGGAGACCAAGTGCTCTGCCAGGGCTGTAGCCAGGCAGGGCCC

**ACGCGTACGCGGCCGCTCGAGCAGAAACTCATCTCAGAAGAGGATCTGGCAGCAAATGATATCCTGGATT
ACAAGGATGACGACGATAAGGTTTAA**



[View online »](#)

Protein Sequence: >RC203991 protein sequence
 Red=Cloning site Green=Tags(s)

MSESFDCAKCNESLYGRKYIQTDSGPYCVPCYDNTFANTCAECQQLIGHDSRELFYEDRHFHEGCFRCCR
 CQRSLADEPFTCQDSELLCNDYCSAFSSQCSACGETVMPGSRKLEYGGQTWHEHCFLCSGCEQPLGSR
 FVPDKGAHYCVPCYENKFAPRCARCSKTLTQGGVTYRDQPWHRECLVCTGCQTPLAGQQFTSRDEDPYCV
 ACFGELFAPKCSSCKRPVGLGGGKYVSFEDRHHHNCFCSCARCTSLVGQGFVPDGDQVLCQGC SQAGP

TRTRPLEQKLISEEDLAANDILDYKDDDDKV

Chromatograms: https://cdn.origene.com/chromatograms/mk6566_b04.zip

Restriction Sites: SgfI-MluI

Cloning Scheme:

Cloning sites used for ORF Shuttling:



* The last codon before the Stop codon of the ORF

ACCN: NM_004468

ORF Size: 840 bp

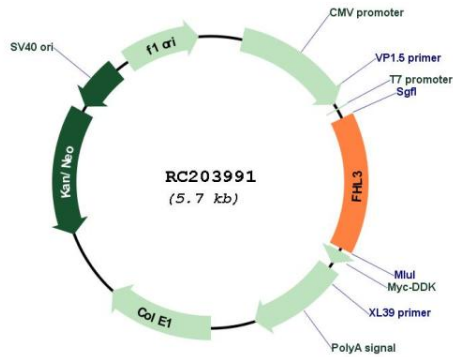
OTI Disclaimer: The molecular sequence of this clone aligns with the gene accession number as a point of reference only. However, individual transcript sequences of the same gene can differ through naturally occurring variations (e.g. polymorphisms), each with its own valid existence. This clone is substantially in agreement with the reference, but a complete review of all prevailing variants is recommended prior to use. [More info](#)

OTI Annotation: This clone was engineered to express the complete ORF with an expression tag. Expression varies depending on the nature of the gene.

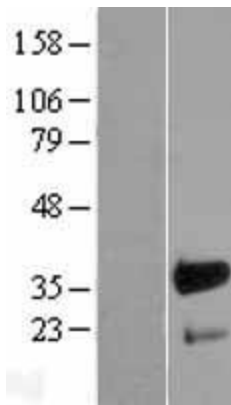
Components: The ORF clone is ion-exchange column purified and shipped in a 2D barcoded Matrix tube containing 10ug of transfection-ready, dried plasmid DNA (reconstitute with 100 ul of water).

Reconstitution Method:	<ol style="list-style-type: none">1. Centrifuge at 5,000xg for 5min.2. Carefully open the tube and add 100ul of sterile water to dissolve the DNA.3. Close the tube and incubate for 10 minutes at room temperature.4. Briefly vortex the tube and then do a quick spin (less than 5000xg) to concentrate the liquid at the bottom.5. Store the suspended plasmid at -20°C. The DNA is stable for at least one year from date of shipping when stored at -20°C.
Note:	Plasmids are not sterile. For experiments where strict sterility is required, filtration with 0.22um filter is required.
RefSeq:	NM_004468.5
RefSeq Size:	1662 bp
RefSeq ORF:	843 bp
Locus ID:	2275
UniProt ID:	Q13643
Cytogenetics:	1p34.3
Domains:	LIM
MW:	31.2 kDa
Gene Summary:	The protein encoded by this gene is a member of a family of proteins containing a four-and-a-half LIM domain, which is a highly conserved double zinc finger motif. The encoded protein has been shown to interact with the cancer developmental regulators SMAD2, SMAD3, and SMAD4, the skeletal muscle myogenesis protein MyoD, and the high-affinity IgE beta chain regulator MZF-1. This protein may be involved in tumor suppression, repression of MyoD expression, and repression of IgE receptor expression. Two transcript variants encoding different isoforms have been found for this gene. [provided by RefSeq, Aug 2011]

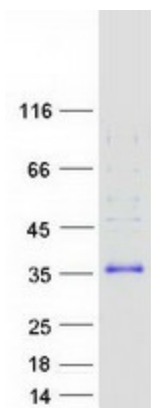
Product images:



Circular map for RC203991



Western blot validation of overexpression lysate (Cat# [LY417968]) using anti-DDK antibody (Cat# [TA50011-100]). Left: Cell lysates from untransfected HEK293T cells; Right: Cell lysates from HEK293T cells transfected with RC203991 using transfection reagent MegaTran 2.0 (Cat# [TT210002]).



Coomassie blue staining of purified FHL3 protein (Cat# [TP303991]). The protein was produced from HEK293T cells transfected with FHL3 cDNA clone (Cat# RC203991) using MegaTran 2.0 (Cat# [TT210002]).