

Product datasheet for **RC203990**

RCN1 (NM_002901) Human Tagged ORF Clone

Product data:

Product Type:	Expression Plasmids
Product Name:	RCN1 (NM_002901) Human Tagged ORF Clone
Tag:	Myc-DDK
Symbol:	RCN1
Synonyms:	HEL-S-84; PIG20; RCAL; RCN
Mammalian Cell Selection:	Neomycin
Vector:	pCMV6-Entry (PS100001)
E. coli Selection:	Kanamycin (25 ug/mL)
ORF Nucleotide Sequence:	>RC203990 ORF sequence Red=Cloning site Blue=ORF Green=Tags(s)

TTTTGTAATACGACTCACTATAGGGCGGCCGGAATTCGTCGACTGGATCCGGTACCGAGGAGATCTGCC
GCC**CGATCGCC**

ATGGCGCGCGGTGGCCGCGGCCCGCCTGGGGTTAGCCCTGGGGCTGCTGCTGGCGCTGGTCTGGCGC
CGCGGGTTCTGCGGGCCAAGCCACGGTGCACAAAGAGCGCGTGGTGGGCCCGACTCGGAGCTGGGCGA
GCGGCCCCCTGAGGACAACCAGAGCTTCCAGTACGACCACGAGGCCCTTCTGGGCAAGGAGGACTCCAAG
ACCTTCGACCAGCTCACCCGGACGAGAGCAAGGAGAGGCTAGGGAAGATTGTTGATCGAATCGACAATG
ATGGGGATGGCTTGTCACTACTGAGGAGCTGAAAACCTGGATCAAACGGGTGCAGAAAAGATACATCTT
TGATAATGTCGCCAAAGTCTGGAAGGATTATGATAGGGACAAGGATGATAAAATTCCTGGGAAGAATAC
AAACAAGCCACCTATGGTACTACCTAGGAAACCCCGCAGAGTTTCATGATTCCTCAGATCATCACACCT
TTAAAAAGATGCTGCCACGTGATGAGAGAAGATTCAAAGTGCAGACCTCAATGGTGACCTGACAGCTAC
TCGGGAGGAGTTCCTGCCTTTCTGCATCCTGAAGAGTTTGAACATATGAAGGAAATTTGGTTTTGGAA
ACCCTGGAGGACATCGACAAGAACGGGGATGGGTTTTGGGATCAGGATGAGTATATTGCGGATATGTTTT
CCCATGAGGAGAAATGGCCCTGAGCCAGACTGGGTTTTATCAGAACGGGAGCAGTTAACGAATTCGGGA
TCTGAACAAGGACGGGAAGTTAGACAAAAGATGAGATTCGCCACTGGATCCTCCCTCAAGATTATGATCAT
GCACAGGCTGAGGCCAGGCATCTGGTATATGAATCAGACAAAAACAAGGATGAGAAGCTAACTAAAGAGG
AAATATTGGAGAAGTGAACATGTTTGTGCGGAAGCCAAGCTACCAATTACGGGGAAGATCTCACAAAAA
TCATGATGAGCTT

ACGCGTACGCGGCCGCTCGAGCAGAACTCATCTCAGAAGAGGATCTGGCAGCAATGATATCCTGGATT
ACAAGGATGACGACGATAAGGTTTAA



[View online »](#)

Protein Sequence: >RC203990 protein sequence
Red=Cloning site Green=Tags(s)

MARGGRGRRLLGLALGLLLALVLAAPRVLRAKPTVRKERVVRPDSSELGERPPEDNQSFQYDHEAFLGKEDSK
 TFDQLTPDESKERLGIIVDRIDNDGDGFVTTEELKTWIKRVQKRYIFDNVAKVWKDYDRDKDKISWEEY
 KQATYGYLLGNPAEFHSDHHTFKKMLPRDERRFKAADLNGDLTATREEFTAFLLHPEEFEHMKEIVVLE
 TLEDIDKNGDGFVDQDEYIADMF SHEENGPEPDWVLSEREQFNEFRDLNKDGKLDKDEIRHWILPQDYDH
 AQAEARHLVYESDKNKDEKLTKEEILENWNMFVGSQATNYGEDLTKNHDEL

TRTRPLEQKLISEEDLAANDILDYKDDDDKV

Chromatograms: https://cdn.origene.com/chromatograms/mk6422_e12.zip

Restriction Sites: SgfI-MluI

Cloning Scheme:



ACCN: NM_002901

ORF Size: 993 bp

OTI Disclaimer: The molecular sequence of this clone aligns with the gene accession number as a point of reference only. However, individual transcript sequences of the same gene can differ through naturally occurring variations (e.g. polymorphisms), each with its own valid existence. This clone is substantially in agreement with the reference, but a complete review of all prevailing variants is recommended prior to use. [More info](#)

OTI Annotation: This clone was engineered to express the complete ORF with an expression tag. Expression varies depending on the nature of the gene.

Components: The ORF clone is ion-exchange column purified and shipped in a 2D barcoded Matrix tube containing 10ug of transfection-ready, dried plasmid DNA (reconstitute with 100 ul of water).

Reconstitution Method:

1. Centrifuge at 5,000xg for 5min.
2. Carefully open the tube and add 100ul of sterile water to dissolve the DNA.
3. Close the tube and incubate for 10 minutes at room temperature.
4. Briefly vortex the tube and then do a quick spin (less than 5000xg) to concentrate the liquid at the bottom.
5. Store the suspended plasmid at -20°C. The DNA is stable for at least one year from date of shipping when stored at -20°C.

Note: Plasmids are not sterile. For experiments where strict sterility is required, filtration with 0.22um filter is required.

RefSeq: [NM_002901.4](#)

RefSeq Size: 2529 bp

RefSeq ORF: 996 bp

Locus ID: 5954

UniProt ID: [Q15293](#)

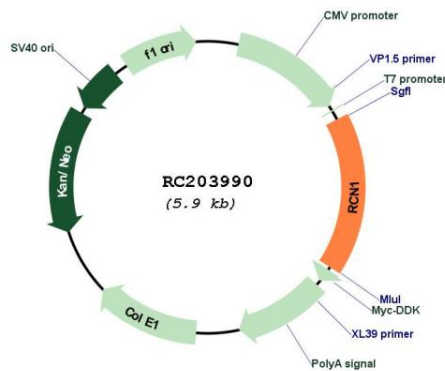
Cytogenetics: 11p13

Domains: EFh

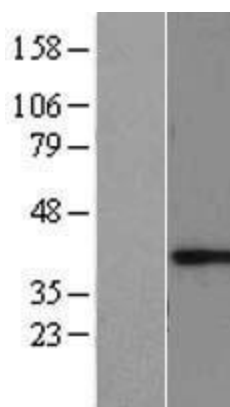
MW: 38.9 kDa

Gene Summary: Reticulocalbin 1 is a calcium-binding protein located in the lumen of the ER. The protein contains six conserved regions with similarity to a high affinity Ca(+2)-binding motif, the EF-hand. High conservation of amino acid residues outside of these motifs, in comparison to mouse reticulocalbin, is consistent with a possible biochemical function besides that of calcium binding. In human endothelial and prostate cancer cell lines this protein localizes to the plasma membrane.[provided by RefSeq, Jan 2009]

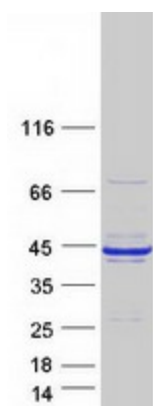
Product images:



Circular map for RC203990



Western blot validation of overexpression lysate (Cat# [LY419027]) using anti-DDK antibody (Cat# [TA50011-100]). Left: Cell lysates from untransfected HEK293T cells; Right: Cell lysates from HEK293T cells transfected with RC203990 using transfection reagent MegaTran 2.0 (Cat# [TT210002]).



Coomassie blue staining of purified RCN1 protein (Cat# [TP303990]). The protein was produced from HEK293T cells transfected with RCN1 cDNA clone (Cat# RC203990) using MegaTran 2.0 (Cat# [TT210002]).