

Product datasheet for **RC203989**

RCL (DNPH1) (NM_006443) Human Tagged ORF Clone

Product data:

Product Type: Expression Plasmids
Product Name: RCL (DNPH1) (NM_006443) Human Tagged ORF Clone
Tag: Myc-DDK
Symbol: RCL
Synonyms: C6orf108; dj330M21.3; RCL
Mammalian Cell Selection: Neomycin
Vector: pCMV6-Entry (PS100001)
E. coli Selection: Kanamycin (25 ug/mL)
ORF Nucleotide Sequence: >RC203989 ORF sequence
Red=Cloning site Blue=ORF Green=Tags(s)

TTTTGTAATACGACTCACTATAGGGCGGCCGGAATTCGTCGACTGGATCCGGTACCGAGGAGATCTGCC
GCC**CGATCGCC**

ATGGCTGCTGCCATGGTGCCGGGGCGCAGCGAGAGCTGGGAGCGCGGGGAGCCTGGCCGCCCGGCCCTGT
ACTTCTCGGGGAGCATTGCGGGCGGACGCGAGGACAGGACGCTGTACGAGCGGATCGTGTCTCGGCTGCG
GCGATTCGGGACAGTGCTCACCGAGCACGTGGCGGCCCGCAGCTGGGCGCGCGGGGAAGAGGCTGCT
GGGGGTGACAGGCTCATCCATGAGCAGGACCTGGAGTGGCTGCAGCAGCGGACGTGGTCTGTCGAGAAG
TGACACAGCCATCCTTGGGTGTAGGCTATGAGCTGGGCCGGCCGTGGCCTTTAAACAAGCGGATCCTGTG
CCTGTTCCGCCCGAGTCTGGCCGCGTGTTCGCGCATGATCCGGGAGCAGCAGATGGCTCTCGGTTCC
CAGGTGTGGGACTATGAGGAGGGAGAGGTGGAGGCCCTGCTGGATCGATACTTCGAGGCTGATCCTCCAG
GGCAGGTGGCTGCCTCCCTGACCAACCACT

ACGCGTACGCGGCCGCTCGAGCAGAACTCATCTCAGAAGAGGATCTGGCAGCAAATGATATCCTGGATT
ACAAGGATGACGACGATAAGGTTTAA

Protein Sequence: >RC203989 protein sequence
Red=Cloning site Green=Tags(s)

MAAAMVGRSESWERGEPRPAL YFCGSIRGGREDRTL YERIVSRLRRFGTVL TEHVAAAELGARGEEAA
GGDRLIHEQDLEWLQQADVVAEVTQPSLGVGYELGRAVAFNKRILCLFRPQSGRVL SAMIRGAADGSRF
QVWDYEEGEVEALLDRYFEADPPGQVAASPDPTT

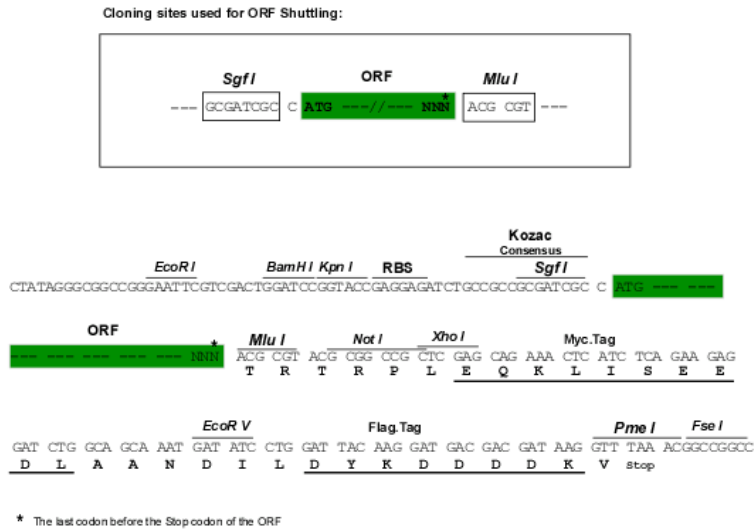
TRTRPLEQKLISEEDLAANDILDYKDDDDKV

Chromatograms: https://cdn.origene.com/chromatograms/mk6423_d09.zip



Restriction Sites: SgfI-MluI

Cloning Scheme:



ACCN: NM_006443

ORF Size: 522 bp

OTI Disclaimer: The molecular sequence of this clone aligns with the gene accession number as a point of reference only. However, individual transcript sequences of the same gene can differ through naturally occurring variations (e.g. polymorphisms), each with its own valid existence. This clone is substantially in agreement with the reference, but a complete review of all prevailing variants is recommended prior to use. [More info](#)

OTI Annotation: This clone was engineered to express the complete ORF with an expression tag. Expression varies depending on the nature of the gene.

Components: The ORF clone is ion-exchange column purified and shipped in a 2D barcoded Matrix tube containing 10ug of transfection-ready, dried plasmid DNA (reconstitute with 100 ul of water).

Reconstitution Method:

1. Centrifuge at 5,000xg for 5min.
2. Carefully open the tube and add 100ul of sterile water to dissolve the DNA.
3. Close the tube and incubate for 10 minutes at room temperature.
4. Briefly vortex the tube and then do a quick spin (less than 5000xg) to concentrate the liquid at the bottom.
5. Store the suspended plasmid at -20°C. The DNA is stable for at least one year from date of shipping when stored at -20°C.

RefSeq: [NM_006443.3](#)

RefSeq Size: 662 bp

RefSeq ORF: 525 bp

Locus ID: 10591

UniProt ID: [O43598](#)

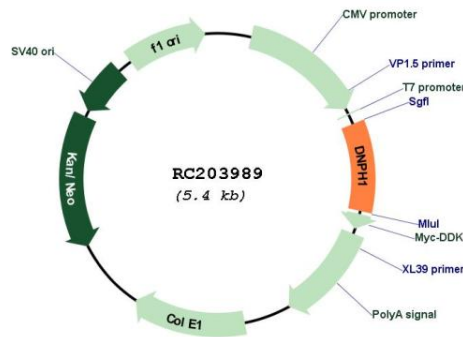
Cytogenetics: 6p21.1

Domains: Nuc_deoxyrib_tr

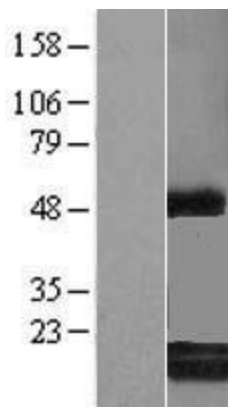
MW: 19.1 kDa

Gene Summary: This gene was identified on the basis of its stimulation by c-Myc protein. The latter is a transcription factor that participates in the regulation of cell proliferation, differentiation, and apoptosis. The exact function of this gene is not known but studies in rat suggest a role in cellular proliferation and c-Myc-mediated transformation. Two alternative transcripts encoding different proteins have been described. [provided by RefSeq, Jul 2008]

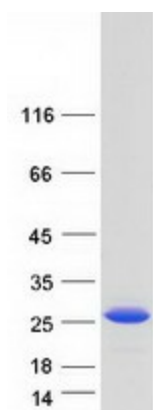
Product images:



Circular map for RC203989



Western blot validation of overexpression lysate (Cat# [LY416630]) using anti-DDK antibody (Cat# [TA50011-100]). Left: Cell lysates from untransfected HEK293T cells; Right: Cell lysates from HEK293T cells transfected with RC203989 using transfection reagent MegaTran 2.0 (Cat# [TT210002]).



Coomassie blue staining of purified DNPH1 protein (Cat# [TP303989]). The protein was produced from HEK293T cells transfected with DNPH1 cDNA clone (Cat# RC203989) using MegaTran 2.0 (Cat# [TT210002]).