

## Product datasheet for RC203988L1

### Claudin 15 (CLDN15) (NM\_138429) Human Tagged Lenti ORF Clone

#### Product data:

Product Type:	Expression Plasmids
Product Name:	Claudin 15 (CLDN15) (NM_138429) Human Tagged Lenti ORF Clone
Tag:	Myc-DDK
Symbol:	Claudin 15
Synonyms:	claudin 15; FLJ42715; MGC19536
Mammalian Cell Selection:	None
Vector:	pLenti-C-Myc-DDK (PS100064)
E. coli Selection:	Chloramphenicol (34 ug/mL)
ORF Nucleotide Sequence:	The ORF insert of this clone is exactly the same as(RC203988).
Restriction Sites:	SgfI-MluI
Cloning Scheme:	

Cloning sites used for ORF Shuttling:



\* The last codon before the Stop codon of the ORF.

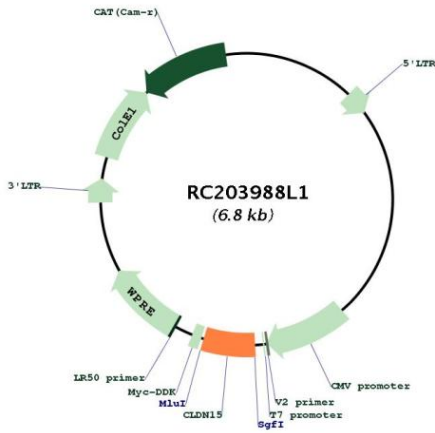
ACCN:	NM_138429
ORF Size:	384 bp



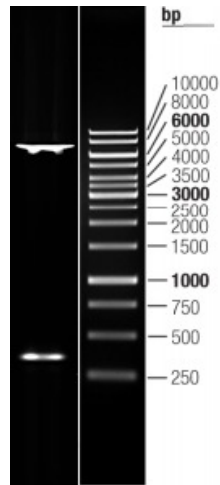
[View online »](#)

<b>OTI Disclaimer:</b>	The molecular sequence of this clone aligns with the gene accession number as a point of reference only. However, individual transcript sequences of the same gene can differ through naturally occurring variations (e.g. polymorphisms), each with its own valid existence. This clone is substantially in agreement with the reference, but a complete review of all prevailing variants is recommended prior to use. <a href="#">More info</a>
<b>OTI Annotation:</b>	This clone was engineered to express the complete ORF with an expression tag. Expression varies depending on the nature of the gene.
<b>Components:</b>	The ORF clone is ion-exchange column purified and shipped in a 2D barcoded Matrix tube containing 10ug of transfection-ready, dried plasmid DNA (reconstitute with 100 ul of water).
<b>Reconstitution Method:</b>	<ol style="list-style-type: none"><li>1. Centrifuge at 5,000xg for 5min.</li><li>2. Carefully open the tube and add 100ul of sterile water to dissolve the DNA.</li><li>3. Close the tube and incubate for 10 minutes at room temperature.</li><li>4. Briefly vortex the tube and then do a quick spin (less than 5000xg) to concentrate the liquid at the bottom.</li><li>5. Store the suspended plasmid at -20°C. The DNA is stable for at least one year from date of shipping when stored at -20°C.</li></ol>
<b>RefSeq:</b>	<a href="#">NM_138429.1</a> , <a href="#">NP_612438.1</a>
<b>RefSeq Size:</b>	1200 bp
<b>RefSeq ORF:</b>	386 bp
<b>Locus ID:</b>	24146
<b>Cytogenetics:</b>	7q22.1
<b>Protein Families:</b>	Transmembrane
<b>Protein Pathways:</b>	Cell adhesion molecules (CAMs), Leukocyte transendothelial migration, Tight junction
<b>MW:</b>	13.8 kDa
<b>Gene Summary:</b>	This gene encodes a member of the claudin family. Claudins are integral membrane proteins and components of tight junction strands. Tight junction strands serve as a physical barrier to prevent solutes and water from passing freely through the paracellular space between epithelial or endothelial cell sheets, and also play critical roles in maintaining cell polarity and signal transductions. Alternatively spliced transcript variants encoding the same protein have been found for this gene. [provided by RefSeq, Jun 2010]

Product images:



Circular map for RC203988L1



Double digestion of RC203988L1 using SgfI and MluI