

Product datasheet for **RC203987**

ILVBL (NM_006844) Human Tagged ORF Clone

Product data:

Product Type:	Expression Plasmids
Product Name:	ILVBL (NM_006844) Human Tagged ORF Clone
Tag:	Myc-DDK
Symbol:	ILVBL
Synonyms:	209L8; AHAS; HAACL1L; ILV2H
Mammalian Cell Selection:	Neomycin
Vector:	pCMV6-Entry (PS100001)
E. coli Selection:	Kanamycin (25 ug/mL)



[View online »](#)

ORF Nucleotide
Sequence:

>RC203987 ORF sequence
Red=Cloning site Blue=ORF Green=Tags(s)

TTTTGTAATACGACTCACTATAGGGCGGCCGGGAATTCGTCGACTGGATCCGGTACCGAGGAGATCTGCC
GCCGCGATCGCC

ATGGAGACCCCCGCGCCCGCCCGCTGGGAGCTTATCCCCTCCTCCTGCTCCTGGCCTGCGGGA
CGCTGGTGGCCGCTTGCTGGGCGCCGCTCACCGCTGGGGCTCTTCTATCAGCTGCTGCACAAGGTGGA
CAAGGCAAGCGTCCGGCATGGCGGAGAGAACGTGGCCGCTGTGCTGAGGGCCCATGGTGTGCGGTTTCATC
TTCACGCTGGTGGTGGGCACATTTCCCGCTGCTGGTGGCTGTGAGAACTGGGCATCCGTGTGGTGG
ACACACGCCATGAGGTACGGCCGCTTTTGTGCTGATGCTATGGCCGCTGTCCGGGACGGTGGGCGT
GGCGGCAGTGACAGCAGGCCCTGGCCTACCAACACGGTGACTGCGGTGAAGAATGCTCAGATGGCTCAG
TCCCAATCCTGCTTCTGGGTGGGGCTGCCAGCACTCTGCTGCAGAACCGGGGTGCGCTCCAGGCTGTTG
ATCAGCTGTCCCTTTCCGGCCACTCTGTAAGTTTTGTGTCTGTGCGGAGGGTGGGGACATTGTGCC
CACCTGAGGGCCGCGATGGCTGCCGCCAGTCGGGCACCCAGGTCGGTGTGTTGTGGAGCTGCCCGTT
GACGTGCTGTACCCTACTTCATGGTCCAGAAGGAGATGGTGCCAGCCAAGCCACCAAGGGCCTCGTGG
GCCGAGTGGTCTCCTGGTATTTAGAGAATTACCTGGCCAACTCTTTGCAGGAGCCTGGGAGCCTCAGCC
CGAGGGACCGCTGCCCTGGACATCCCCAGGCTTCCCCGAGCAGGTTACAGCGCTGTGTGGAGATCCTG
AGCCGGGCAAGAGGCCCTCTGATGGTGTGGGAGTCAAGCCCTGCTCACCCCAACGTCTGCCGACAAGC
TTGGGGTGGCGTGGAGACCTTGGGTGTTCCCTGCTTCTTGGAGGGATGGCACGGGGGCTGTTAGGCCG
CAACCACCCCTCCACATCCGGGAGAACCAGTGCAGCCCTGAAGAAGCGGACGTCATTGTCTAGCA
GGAAGTGTGTGACTTCCGCTATCCTATGGCCGTGCTCAGCCACAGCAGCAAGATCATCATCGTCA
ATCGTAATCGGGAAGAGATGTTGCTCAACTCAGACATCTTCTGGAAGCCCAGGAGGCTGTGAGGGAGA
TGTGGGTTCCCTTCGTGCTGAAGTTAGTGGAGGGCCTTCAGGGCCAGACCTGGGCCCCAGACTGGGTGGAG
GAGCTGCGGGAAGCCGACCGGCAGAAGGAGCAGACCTTTCGGGAGAAGGCAGCGATGCTGTGGCCAGC
ACCTGAACCCAGTGCAGGTGCTGCAGCTGGTGGAGGAAACGCTACCTGACAACTCAATTCTGGTGGTGG
TGGCGGGACTTCGTGGGCACTGCTGCCATCTGGTACAGCCCCGCGGCCCTGCGCTGGCTCGATCCT
GGGGCCTTTGGGACTCTGGGAGTTGGTGCAGGATTTGCACTTGGGGCCAAGCTGTGCCGGCCAGATGCTG
AGGTCTGGTGCCTGTTTGGGACGGAGCTTTTGGCTACAGCCTCATCGAATTTGATACATTCTGCAGACA
CAAGATCCCAGTATGGCCTTGGTAGGGAATGATGCTGGCTGGACACAGATTTCTCGGGAGCAGGTGCC
TCTCTGGGAGCAACGTGGCCTGTGGCCTGGCCTACACTGATTATCACAAGGCAGCCATGGGTCTGGGG
CCCGGGGCTTGCTGCTCTCACGGGAGAACGAGGATCAGGTGGTCAAGGTGCTGCACGATGCCAGCAGCA
GTGCCGAGACGGCCACCGGTTGTGGTCAACATCCTCATTGGGAGGACGGACTTCCGCGATGGCTCCATT
GCTGTA

ACGCGTACGCGGCCGCTCGAGCAGAACTCATCTCAGAAGAGGATCTGGCAGCAATGATATCCTGGATT
ACAAGGATGACGACGATAAGGTTTAA

Reconstitution Method:

1. Centrifuge at 5,000xg for 5min.
2. Carefully open the tube and add 100ul of sterile water to dissolve the DNA.
3. Close the tube and incubate for 10 minutes at room temperature.
4. Briefly vortex the tube and then do a quick spin (less than 5000xg) to concentrate the liquid at the bottom.
5. Store the suspended plasmid at -20°C. The DNA is stable for at least one year from date of shipping when stored at -20°C.

RefSeq: [NM_006844.2](#)

RefSeq Size: 2347 bp

RefSeq ORF: 1899 bp

Locus ID: 10994

UniProt ID: [A1L0T0](#)

Cytogenetics: 19p13.12

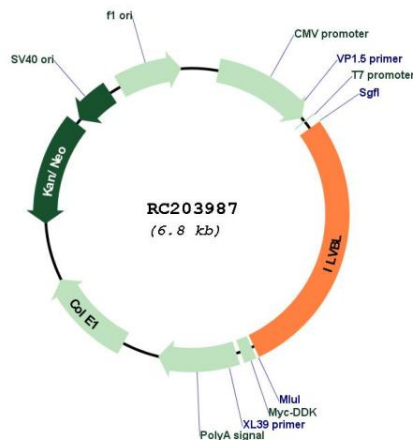
Domains: TPP_enzymes

Protein Families: Transmembrane

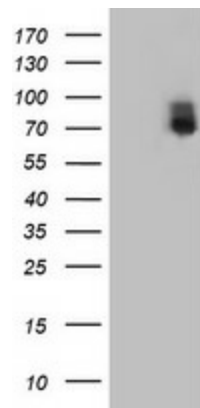
MW: 67.9 kDa

Gene Summary: The protein encoded by this gene shares similarity with several thiamine pyrophosphate-binding proteins identified in bacteria, yeast, and plants. The highest degree of similarity is found with bacterial acetolactate synthases (AHAS), which are enzymes that catalyze the first step in branched-chain amino acid biosynthesis. [provided by RefSeq, Jul 2008]

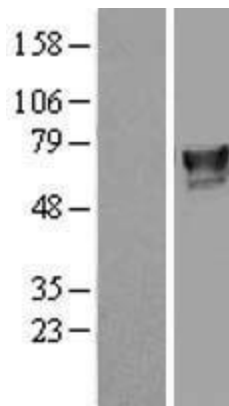
Product images:



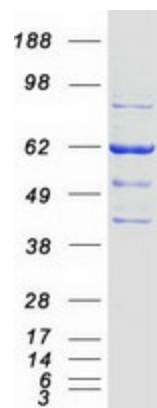
Circular map for RC203987



HEK293T cells were transfected with the pCMV6-ENTRY control (Cat# [PS100001], Left lane) or pCMV6-ENTRY ILVBL (Cat# RC203987, Right lane) cDNA for 48 hrs and lysed. Equivalent amounts of cell lysates (5 ug per lane) were separated by SDS-PAGE and immunoblotted with anti-ILVBL (Cat# [TA503078]). Positive lysates [LY416389] (100ug) and [LC416389] (20ug) can be purchased separately from OriGene.



Western blot validation of overexpression lysate (Cat# [LY416389]) using anti-DDK antibody (Cat# [TA50011-100]). Left: Cell lysates from untransfected HEK293T cells; Right: Cell lysates from HEK293T cells transfected with RC203987 using transfection reagent MegaTran 2.0 (Cat# [TT210002]).



Coomassie blue staining of purified ILVBL protein (Cat# [TP303987]). The protein was produced from HEK293T cells transfected with ILVBL cDNA clone (Cat# RC203987) using MegaTran 2.0 (Cat# [TT210002]).