

Product datasheet for **RC203986**

DP1 (TFDP1) (NM_007111) Human Tagged ORF Clone

Product data:

Product Type:	Expression Plasmids
Product Name:	DP1 (TFDP1) (NM_007111) Human Tagged ORF Clone
Tag:	Myc-DDK
Symbol:	DP1
Synonyms:	DILC; Dp-1; DP1; DRTF1
Mammalian Cell Selection:	Neomycin
Vector:	pCMV6-Entry (PS100001)
E. coli Selection:	Kanamycin (25 ug/mL)
ORF Nucleotide Sequence:	>RC203986 ORF sequence Red=Cloning site Blue=ORF Green=Tags(s)

TTTTGTAATACGACTCACTATAGGGCGCCGGGAATTCGTCGACTGGATCCGGTACCGAGGAGATCTGCC
GCC**CGATCGCC**

ATGGCAAAAGATGCCGGTCTAATTGAAGCCAACGGAGAACTCAAGGTCTTCATAGACCAGAACCTTAGTC
CCGGGAAAGGCGTGGTGTCCCTCGTGGCCGTTACCCCTCCACCGTCAACCCGCTCGGGAAGCAGCTCTT
GCCAAAAACCTTTGGACAGTCCAATGTCAACATTGCCAGCAAGTGGTAATTGGTACGCCTCAGAGACCG
GCAGCGTCAAACACCCTGGTGGTAGGAAGCCACACACCCCCAGCACTACTTTGCCTCTCAGAACCAGC
CTTCCGACTCCTCACCTGGTCTGCCGGGAAGCGCAACAGGAAAGGAGAGAAGAATGGCAAGGGCCTACG
GCATTTCTCCATGAAGGTCTGCGAGAAGGTGCGAGGAAAGGGACCATTCTACACGAAGTGGCAGAG
GAGCTGGTTGCGGAGTTCAGTGCTGCCGACAACCATCTTACCAAACGAGTCAGCTTATGACCAGAAAA
ACATAAGACGGCGCTCTACGATGCCTTAAACGTGCTAATGGCCATGAACATCATCTCCAAGGAGAAGAA
GGAGATCAAGTGGATTGGTCTGCCACCAACTCGGCTCAGGAATGTGAGAACTTAGAGGTGGAAAGACAG
AGGAGACTTGAAAGAATAAAACAGAAACAGTCTCAACTTCAAGAACTTATTCTACAGCAAATTCCTTCA
AGAACCTGGTGCAGAGAAACCGGCATGCCGAGCAGCAGGCCAGCCGGCCACCGCCACCAACTCAGTCAT
CCACCTGCCCTTCATCATCGTCAACACCAGCAAGAAGACGGTTCATCGACTGCAGCATCTCCAATGACAAA
TTTGAGTATCTGTTAATTTTGACAACACATTTGAAATCCACGATGACATAGAAGTGTGAAGCGGATGG
GCATGGCTTGCAGGCTGGAGTCCGGGAGCTGCTCTGCCGAAGACCTTAAATGGCCAGAAGTCTGGTCCC
CAAGGCTCTGGAGCCATACGTGACAGAAATGGCTCAGGGAAGTGTGGAGGCGTGTTCATCACGACGGCA
GGTTCCACGTCTAACGGCACAAGGTTCTCTGCCAGTGACCTGACCAACGGTGCAGATGGGATGCTGGCCA
CAAGCTCCAATGGGTCTCAGTACAGCGGCTCCAGGTTGGAGACTCCGGTGTCTACGTCCGGGAGGACGA
CGAGGAGGACGATGACTTCAACGAGAATGACGAGGACGAC

ACGCGTACGCGGCCGCTCGAGCAGAAACTCATCTCAGAAGAGGATCTGGCAGCAAATGATATCTGGATT
ACAAGGATGACGACGATAAGGTTTAA



[View online »](#)

Protein Sequence: >RC203986 protein sequence
Red=Cloning site Green=Tags(s)

MAKDAGLIEANGELKVFIDQNLSPGKGVVSLVAVHPSTVNPLGKQLPKTFGQSNVNIAQQVVIPTQRP
 AASNTLVVGSPTSTHFAEQNPSSPWSAGKRNRKGEKNGKLRHF SMKVCEKVQRKGTTSYNEVAD
 ELVAEFSAADNHILPNESAYDQKNIRRRVVDALNVLMMNIIISKEKKEIKWIGLPTNSAQEQNLEVERQ
 RRLERIKQKQSQLQELILQQIAFKNLVQRNRHAEQQASRPPPPNSVIHLPFIIIVNTSKKTVIDCSI SNDK
 FEYLFNFNTFEIHDDIEVLKRMGMACGLESGSCSAEDLKMARSLVPKALEPYVTEMAQGTVGGVITTA
 GSTSNGTRFSASDLTNGADGMLATSSNGSQYSGSRVETPVSYVGEDDEEDDDFNENDEDD

TRTRPLEQKLISEEDLAANDILDYKDDDDKV

Chromatograms: https://cdn.origene.com/chromatograms/mk6058_c05.zip

Restriction Sites: SgfI-MluI

Cloning Scheme:



* The last codon before the Stop codon of the ORF

ACCN: NM_007111

ORF Size: 1230 bp

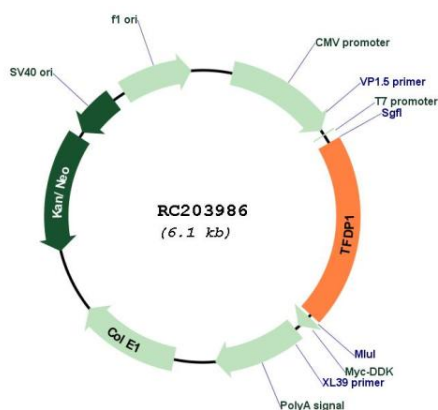
OTI Disclaimer: The molecular sequence of this clone aligns with the gene accession number as a point of reference only. However, individual transcript sequences of the same gene can differ through naturally occurring variations (e.g. polymorphisms), each with its own valid existence. This clone is substantially in agreement with the reference, but a complete review of all prevailing variants is recommended prior to use. [More info](#)

OTI Annotation: This clone was engineered to express the complete ORF with an expression tag. Expression varies depending on the nature of the gene.

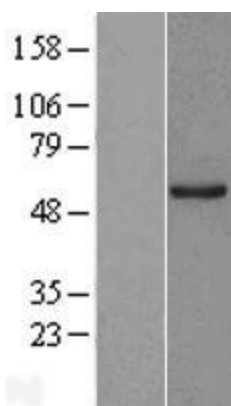
Components: The ORF clone is ion-exchange column purified and shipped in a 2D barcoded Matrix tube containing 10ug of transfection-ready, dried plasmid DNA (reconstitute with 100 ul of water).

Reconstitution Method:	<ol style="list-style-type: none">1. Centrifuge at 5,000xg for 5min.2. Carefully open the tube and add 100ul of sterile water to dissolve the DNA.3. Close the tube and incubate for 10 minutes at room temperature.4. Briefly vortex the tube and then do a quick spin (less than 5000xg) to concentrate the liquid at the bottom.5. Store the suspended plasmid at -20°C. The DNA is stable for at least one year from date of shipping when stored at -20°C.
Note:	Plasmids are not sterile. For experiments where strict sterility is required, filtration with 0.22um filter is required.
RefSeq:	NM_007111.5
RefSeq Size:	2651 bp
RefSeq ORF:	1233 bp
Locus ID:	7027
UniProt ID:	Q14186
Cytogenetics:	13q34
Domains:	E2F_TDP
Protein Families:	Druggable Genome, Transcription Factors
Protein Pathways:	Cell cycle, TGF-beta signaling pathway
MW:	45.1 kDa
Gene Summary:	This gene encodes a member of a family of transcription factors that heterodimerize with E2F proteins to enhance their DNA-binding activity and promote transcription from E2F target genes. The encoded protein functions as part of this complex to control the transcriptional activity of numerous genes involved in cell cycle progression from G1 to S phase. Alternative splicing results in multiple transcript variants. Pseudogenes of this gene are found on chromosomes 1, 15, and X.[provided by RefSeq, Jan 2009]

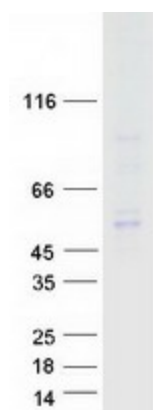
Product images:



Circular map for RC203986



Western blot validation of overexpression lysate (Cat# [LY416191]) using anti-DDK antibody (Cat# [TA50011-100]). Left: Cell lysates from untransfected HEK293T cells; Right: Cell lysates from HEK293T cells transfected with RC203986 using transfection reagent MegaTran 2.0 (Cat# [TT210002]).



Coomassie blue staining of purified TFDP1 protein (Cat# [TP303986]). The protein was produced from HEK293T cells transfected with TFDP1 cDNA clone (Cat# RC203986) using MegaTran 2.0 (Cat# [TT210002]).