

Product datasheet for **RC203977**

G3BP2 (NM_203504) Human Tagged ORF Clone

Product data:

Product Type:	Expression Plasmids
Product Name:	G3BP2 (NM_203504) Human Tagged ORF Clone
Tag:	Myc-DDK
Symbol:	G3BP2
Mammalian Cell Selection:	Neomycin
Vector:	pCMV6-Entry (PS100001)
E. coli Selection:	Kanamycin (25 ug/mL)



[View online »](#)

ORF Nucleotide Sequence:

>RC203977 ORF sequence
 Red=Cloning site Blue=ORF Green=Tags(s)

TTTTGTAATACGACTCACTATAGGGCGGCCGGAATTCGTCGACTGGATCCGGTACCGAGGAGATCTGCC
 GCC**GCGATCGCC**

ATGTTTATGGAGAAGCCAGTCCGCTGCTTGTAGGGCGGGAGTTGTGAGGCAATATTATACTTTGCTGA
 ATAAAGCTCCGGAATATTTACACAGTTTTATGGCAGGAATTCCTCTATGTTTCATGGTGGAGTAGATGC
 TAGTGAAAGCCAGGAAGCTGTTTATGGCAAATGATATACACCACAAAGTATTATCTCTGAACTTC
 AGTGAATGTCATACTAAAATTCGTATGTGGATGCTCATGCAACCTTGAGTGATGGAGTAGTTGTCCAGG
 TCATGGGTTTGTCTAACAGTGGACAACCAGAAAGAAAGTTTATGCAAACCTTTGTTCTGGCTCTGA
 AGGATCTGTTCCAAATAAATTTTATGTTACAATGATATGTTTCGTTATGAAGATGAAGTGTGGTGAT
 TCTGAGCCTGAACCTGATGAAGAATCAGAAGATGAAGTAGAAGAGGAACAAGAAGAAAGACAACCATCTC
 CTGAACCTGTGCAAGAAAATGCTAACAGTGGTTACTATGAAGCTCACCTGTGACTAATGGCATAGAGGA
 GCCTTTGGAAGAATCCTCTCATGAACCTGAACCTGAGCCAGAATCTGAAACAAAGACTGAAGAGCTGAAA
 CCAAGTGGAGGAGAAGAACTTAGAAGAACTAGAGGAGAAAATCTACTACTCCTCCTCCGGCAGAACCTG
 TTTCTCTGCCACAAGAACCACCAAGCCAAAGAGTCGAAGCTAAACCAGAAGTTCAATCTCAGCCACCTCG
 TGTGCGTGAACAACGACCTAGAGAACGACCTGGTTTTCTCCTAGAGGACCAAGACCAGGCAGAGGAGAT
 ATGGAACAGAATGACTCTGACAACCGTAGAATAATTCGCTATCCAGATAGTCATCAACTTTTTGTTGGTA
 ACTTGCCACATGATATTGATGAAAATGAGCTAAAGGAATCTTCATGAGTTTTGGAACGTTGTGGAAC
 TCGCATCAATACCAAGGGTGTGGGGGAAAGCTTCAAATTTGGTTTTGTGTTTTGATGACTCTGAA
 CCAGTTCAGAGAATCTTAATTGCAAAACCGATTATGTTTCGAGGGGAAGTACGTTAAATGTGGAAGAGA
 AAAAAACAAGAGCTCAAGAGAGCGGAAACAGAGGTGGTGGTATGATCGCAGGGATATTAGGCACAA
 TGATCGAGGTCCCGGTGGTCCACGTGGAATTGTGGGTGGTGAATGATGCGTGATCGTGATGGAAGAGGA
 CCTCCTCAAGGGGTGGCATGGCACAGAACTTGCTCTGGAAGAGGAACCGGGCAAATGGAGGGCCGCT
 TCACAGGACAGCGTCGC

ACGCGTACGCGGCCGCTCGAGCAGAACTCATCTCAGAAGAGGATCTGGCAGCAAATGATATCCTGGATT
 ACAAGGATGACGACGATAAGGTTTAA

Protein Sequence:

>RC203977 protein sequence
 Red=Cloning site Green=Tags(s)

MVMEKPSPLLVGREFVRQYYTLLNKAPEYLHRFYGRNSSYVHGGVDASGKPQEAVYGQNDIHHKVLNLN
 SECHTKIRHVDHATLSDGVVVQVMGLLSNSGQPERKFMQTFVLAPEGSVPNKFYVHNDMFRYEDEVFGD
 SEPELDEESEDEVEEQEERQPSPEPVQENANSYGEAHPVTNGIEEPLSESSHEPEPEPESETKTEELK
 PQVEEKNLEELKSTTPPPAEPVSLPQEPKPRVEAKPEVQSQPPRVREQRPRERPGFPPRGRPRGRGD
 MEQNSDNRRRIIRYPDSHQLFVGNLPHDIDENELKEFFMSFGNVVELRINTKGVGKLPNFGVVFDDSE
 PVQRILIAKPIIMFRGEVRLNVEEKKTRAARERETRGGDDRRDIRRNDRGPGGPRGIVGGMMRDRDRGR
 PPRRGGMAQKLGSGRGTQMGRFTGQRR

TRTRPLEQKLISEEDLAANDILDYKDDDDKV

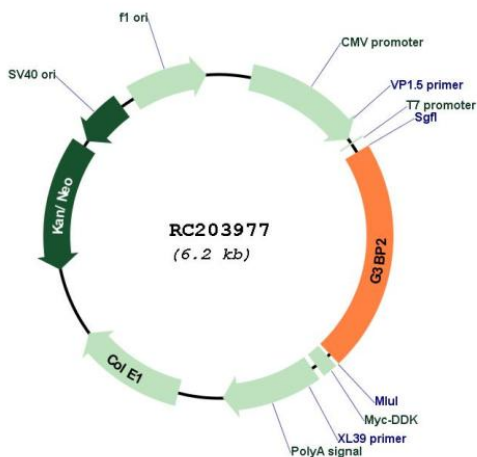
Chromatograms:

https://cdn.origene.com/chromatograms/mk6568_a11.zip

Restriction Sites:

SgfI-MluI

Cloning Scheme:

Plasmid Map:


ACCN: NM_203504

ORF Size: 1347 bp

OTI Disclaimer: The molecular sequence of this clone aligns with the gene accession number as a point of reference only. However, individual transcript sequences of the same gene can differ through naturally occurring variations (e.g. polymorphisms), each with its own valid existence. This clone is substantially in agreement with the reference, but a complete review of all prevailing variants is recommended prior to use. [More info](#)

OTI Annotation: This clone was engineered to express the complete ORF with an expression tag. Expression varies depending on the nature of the gene.

Components: The ORF clone is ion-exchange column purified and shipped in a 2D barcoded Matrix tube containing 10ug of transfection-ready, dried plasmid DNA (reconstitute with 100 ul of water).

Reconstitution Method:

1. Centrifuge at 5,000xg for 5min.
2. Carefully open the tube and add 100ul of sterile water to dissolve the DNA.
3. Close the tube and incubate for 10 minutes at room temperature.
4. Briefly vortex the tube and then do a quick spin (less than 5000xg) to concentrate the liquid at the bottom.
5. Store the suspended plasmid at -20°C. The DNA is stable for at least one year from date of shipping when stored at -20°C.

RefSeq: [NM_203504.2](#), [NP_987100.1](#)

RefSeq Size: 4311 bp

RefSeq ORF: 1350 bp

Locus ID: 9908

UniProt ID: [Q9UN86](#)

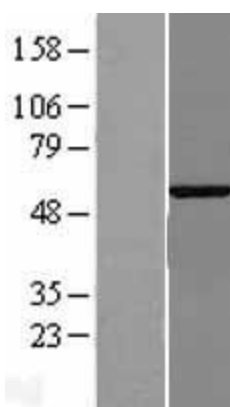
Cytogenetics: 4q21.1

Protein Families: Druggable Genome

MW: 50.8 kDa

Gene Summary: Scaffold protein that plays an essential role in cytoplasmic stress granule formation which acts as a platform for antiviral signaling.[UniProtKB/Swiss-Prot Function]

Product images:



Western blot validation of overexpression lysate (Cat# [LY404252]) using anti-DDK antibody (Cat# [TA50011-100]). Left: Cell lysates from untransfected HEK293T cells; Right: Cell lysates from HEK293T cells transfected with RC203977 using transfection reagent MegaTran 2.0 (Cat# [TT210002]).