

Product datasheet for **RC203976**

Cyclin C (CCNC) (NM_001013399) Human Tagged ORF Clone

Product data:

Product Type: Expression Plasmids
Product Name: Cyclin C (CCNC) (NM_001013399) Human Tagged ORF Clone
Tag: Myc-DDK
Symbol: Cyclin C
Synonyms: CycC; hSRB11; SRB11
Mammalian Cell Selection: Neomycin
Vector: pCMV6-Entry (PS100001)
E. coli Selection: Kanamycin (25 ug/mL)
ORF Nucleotide Sequence: >RC203976 representing NM_001013399
 Red=Cloning site Blue=ORF Green=Tags(s)

TTTTGTAATACGACTCACTATAGGGCGGCCGGAATTCGTCGACTGGATCCGGTACCGAGGAGATCTGCC
 GCC**CGATCGCC**

ATGGCTCTACATGTGTGTTTTGGCATCCAAAGTAGAGGAATTTGGAGTAGTTCAAATACAAGATTGA
 TTGCTGCTGCTACTTCTGTATTAATAAAGTAGATTTTCATATGCCTTTCAAAGGAATTTCTTATAGGAT
 GAATCATATATTAGAATGTGAATTCTATCTGTTAGAACTAATGGATTGTTGCTTGATAGTGTATCATCCT
 TATAGACCTTTGCTCCAGTATGTGCAGGACATGGGCCAAGAAGACATGTTGCTTCCCTTGCATGGAGGA
 TAGTGAATGATACCTACAGAACGGATCTTGCCTACTGTATCCTCTTTCATGATAGCTTAGCTTGCTTGCCT
 ACATGTAGCCTGTGTTGTACAGCAGAAAGATGCCAGGCAATGGTTTGCTGAGCTTCTGTGGATATGGAA
 AAGATTTTGAAAATAATCAGGGTATTTTTAAAACCTATATGAGCAGTGGAAGAATTTTCGATGAGAGAAAAG
 AGATGGCAACCATTTCTAGTAAGATGCCAAAACCAAACCACTCCAACAGTGAAGGAGAGCAGGGTCC
 AAATGGAAGTCAGAACTCTAGCTACAGCCAATCT

ACGCGTACGCGGCCGCTCGAGCAGAACTCATCTCAGAAGAGGATCTGGCAGCAAATGATATCCTGGATT
 ACAAGGATGACGACGATAAGGTTTAA

Protein Sequence: >RC203976 representing NM_001013399
 Red=Cloning site Green=Tags(s)

MAPTCVFLASKVEEFGVSNTRLIAAATSVLKTRFSYAFPKEFPYRMNHILECEFYLLELMDCLIVYHP
 YRPLLQYVQDMGQEDMLLPLAWRIVNDTYRTDLCLLYPPFMIALACLHVACVVQQKДАРQWF AELSVDME
 KILEIIRVILKLYEQWKNFDERKEMATILSKMPKPKPPPNSEGEQGPNGSQNSSYSQS

TRTRPLEQKLISEEDLAANDILDYKDDDDKV



Chromatograms: https://cdn.origene.com/chromatograms/mg4236_f01.zip

Restriction Sites: SgfI-MluI

Cloning Scheme:



ACCN: NM_001013399

ORF Size: 594 bp

OTI Disclaimer: The molecular sequence of this clone aligns with the gene accession number as a point of reference only. However, individual transcript sequences of the same gene can differ through naturally occurring variations (e.g. polymorphisms), each with its own valid existence. This clone is substantially in agreement with the reference, but a complete review of all prevailing variants is recommended prior to use. [More info](#)

OTI Annotation: This clone was engineered to express the complete ORF with an expression tag. Expression varies depending on the nature of the gene.

Components: The ORF clone is ion-exchange column purified and shipped in a 2D barcoded Matrix tube containing 10ug of transfection-ready, dried plasmid DNA (reconstitute with 100 ul of water).

Reconstitution Method:

1. Centrifuge at 5,000xg for 5min.
2. Carefully open the tube and add 100ul of sterile water to dissolve the DNA.
3. Close the tube and incubate for 10 minutes at room temperature.
4. Briefly vortex the tube and then do a quick spin (less than 5000xg) to concentrate the liquid at the bottom.
5. Store the suspended plasmid at -20°C. The DNA is stable for at least one year from date of shipping when stored at -20°C.

RefSeq: [NM_001013399.1](#), [NP_001013417.1](#)

RefSeq Size: 2099 bp

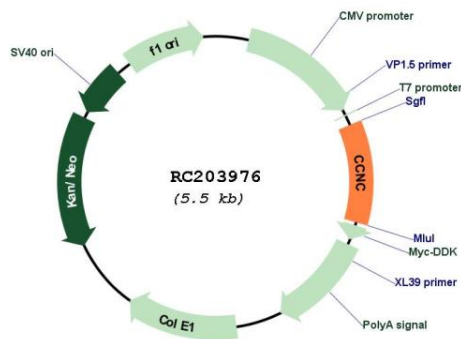
RefSeq ORF: 597 bp

Locus ID: 892

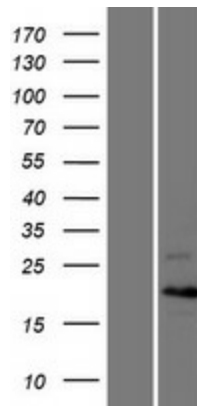
UniProt ID: [P24863](#)
 Cytogenetics: 6q16.2
 Protein Families: Druggable Genome, Transcription Factors
 MW: 22.8 kDa

Gene Summary: The protein encoded by this gene is a member of the cyclin family of proteins. The encoded protein interacts with cyclin-dependent kinase 8 and induces the phosphorylation of the carboxy-terminal domain of the large subunit of RNA polymerase II. The level of mRNAs for this gene peaks in the G1 phase of the cell cycle. Two transcript variants encoding different isoforms have been found for this gene. [provided by RefSeq, Jul 2008]

Product images:



Circular map for RC203976



Western blot validation of overexpression lysate (Cat# [LY422967]) using anti-DDK antibody (Cat# [TA50011-100]). Left: Cell lysates from untransfected HEK293T cells; Right: Cell lysates from HEK293T cells transfected with RC203976 using transfection reagent MegaTran 2.0 (Cat# [TT210002]).