

Product datasheet for **RC203974**

SPOCK2 (NM_014767) Human Tagged ORF Clone

Product data:

| | |
|---------------------------|---|
| Product Type: | Expression Plasmids |
| Product Name: | SPOCK2 (NM_014767) Human Tagged ORF Clone |
| Tag: | Myc-DDK |
| Symbol: | SPOCK2 |
| Synonyms: | testican-2 |
| Mammalian Cell Selection: | Neomycin |
| Vector: | pCMV6-Entry (PS100001) |
| E. coli Selection: | Kanamycin (25 ug/mL) |



[View online »](#)

ORF Nucleotide Sequence:

>RC203974 ORF sequence
 Red=Cloning site Blue=ORF Green=Tags(s)

TTTTGTAATACGACTCACTATAGGGCGGCCGGAATTCGTCGACTGGATCCGGTACCGAGGAGATCTGCC
 GCCGCGATCGCC

ATGCGCGCCCCAGGCTGCGGGCGGTGGTCTGCCGCTGTGCTCCTGGCCGCGGCAGCCCTGGCCGAAG
 GCGACGCCAAGGGCTCAAGGAGGGCGAGACCCCGCAATTCATGGAGGACGAGCAATGGCTGTGCTC
 CATCTCGCAGTACAGCGCAAGATCAAGCACTGGAACCGCTCCGAGACGAAGTGGAGGATGACTATATC
 AAGAGCTGGGAGGACAATCAGCAAGGAGATGAAGCCCTGGATACCAAGGACCCTGCCAGAAGGTGA
 AGTGCAGCCGCCACAAGGTGTGATTGCCAGGGCTACCAGCGGGCCATGTGCATCAGTCGAAGAAGCT
 GGAGCACAGGATCAAGCAGCCGACCGTGAACCTCCATGAAACAAAGACTCCATCTGCAAGCCCTGCCAC
 ATGGCCAGCTTGCTCTGTCTGCGGCTCAGATGGCCACACTTACAGCTCTGTGTGAAGCTGGAGCAAC
 AGGCGTGCCTGAGCAGCAAGCAGCTGGCGGTGCGATGCGAGGGCCCTGCCCTGCCACGAGGAGCGC
 TGCCACCTCCACCGCGATGGCAAACCAGAGACTTGCACCGGTACAGGACCTGGCTGACCTGGGAGATCGG
 CTGCGGGACTGGTTCCAGCTCCTCATGAGAACTCCAAGCAGAATGGCTCAGCCAGCAGTGTAGCCGGCC
 CGCCAGCGGGCTGGACAAGAGCCTGGGGGCCAGCTGCAAGGACTCCATTGGCTGGATGTTCTCCAAGCT
 GGACACAGTGTGACCTTTCCTGGACCAGACGGAGCTGGCCGCCATCAACCTGGACAAGTACGAGGTC
 TGCATCCGTCCCTTCTCAACTCCTGTGACACCTACAAGGATGGCCGGTCTCTACTGCTGAGTGGTGTCT
 TCTGCTTCTGGAGGGAGAAGCCCCCTGCCTGGCAGAGCTGGAGCGCATCCAGATCCAGGAGGCCGCCAA
 GAAGAAGCCAGGCATCTTATCCCGAGCTGCGACGAGGATGGCTACTACCGGAAGATGCAGTGTGACCAG
 AGCAGCGGTGACTGCTGGTGTGTGGACCAGCTGGCCCTGGAGCTGACTGGCACCGCACGCATGGGAGCC
 CCGACTGCGATGACATCGTGGCTTCTCGGGGACTTTGGAAGCGGTGTCGGCTGGGAGGATGAGGAGGA
 GAAGGAGACGGGAAGCAGCGAGGAGCCGAGGAGGAGGAGGGCGAGGCAGGCCAGGCTGACGACGGG
 GGCTACATCTGG

ACGCGTACGCGGGCGCTCGAGCAGAACTCATCTCAGAAGAGGATCTGGCAGCAATGATATCCTGGATT
 ACAAGGATGACGACGATAAGGTTTAA

Protein Sequence:

>RC203974 protein sequence
 Red=Cloning site Green=Tags(s)

MRAPGCGRLVPLLLLLAAAALAEGLDAKGLKEGETPGNFMEDQWLSSISQYSGKIKHWNFRDEVEDDYI
 KSWEDNQQGDEALDTTKDPCQKVKCSRHKVCI AQGYQRAMCISRKKLEHRIKQPTVKLHGNKDSICKPCH
 MAQLASVCGSDGHTYSSVCKLEQQACLSSKQLAVRCEGPCPCPEQAATSTADGKPETCTGQDLADLADR
 LRDWFQLLHENSQNGSASSVAGPASGLDKSLGASCKDSIGWMFSLDTSADLFLDQTELAAILNDKYEYV
 CIRPFNFNSCDTYKGRVSTA EWCFWFREKPPCLAELERIQIQEA AKKPGIFIPSCDEDGYRKMQCDQ
 SSGDCWCVDQLGLEL TGTRTHGSPDCDDIVGFSGDFGSGVWGEDEEEKETEEAGEEAE EEEGEAGEADDG
 GYIW

TRTRPLEQKLISEEDLAANDILDYKDDDDKV

Chromatograms:

https://cdn.origene.com/chromatograms/mk6565_e10.zip

Restriction Sites:

SgfI-MluI

Cloning Scheme:


ACCN: NM_014767

ORF Size: 1272 bp

OTI Disclaimer: The molecular sequence of this clone aligns with the gene accession number as a point of reference only. However, individual transcript sequences of the same gene can differ through naturally occurring variations (e.g. polymorphisms), each with its own valid existence. This clone is substantially in agreement with the reference, but a complete review of all prevailing variants is recommended prior to use. [More info](#)

OTI Annotation: This clone was engineered to express the complete ORF with an expression tag. Expression varies depending on the nature of the gene.

Components: The ORF clone is ion-exchange column purified and shipped in a 2D barcoded Matrix tube containing 10ug of transfection-ready, dried plasmid DNA (reconstitute with 100 ul of water).

- Reconstitution Method:**
1. Centrifuge at 5,000xg for 5min.
 2. Carefully open the tube and add 100ul of sterile water to dissolve the DNA.
 3. Close the tube and incubate for 10 minutes at room temperature.
 4. Briefly vortex the tube and then do a quick spin (less than 5000xg) to concentrate the liquid at the bottom.
 5. Store the suspended plasmid at -20°C. The DNA is stable for at least one year from date of shipping when stored at -20°C.

RefSeq: [NM_014767.2](#)

RefSeq Size: 5345 bp

RefSeq ORF: 1275 bp

Locus ID: 9806

UniProt ID: [Q92563](#)

Cytogenetics: 10q22.1

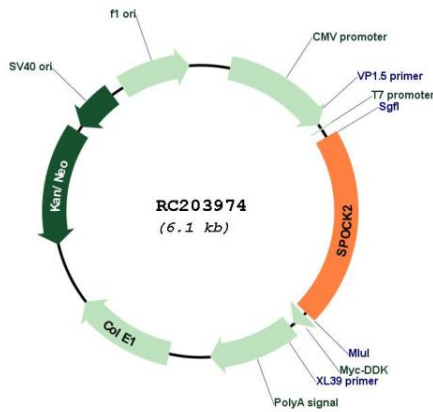
Domains: thyroglobulin_1, kazal

Protein Families: Secreted Protein

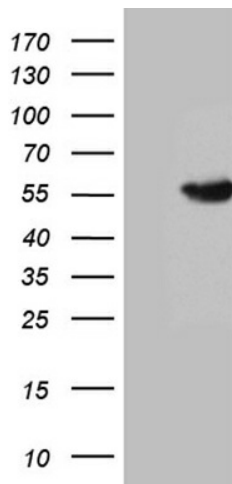
MW: 46.8 kDa

Gene Summary: This gene encodes a protein which binds with glycosaminoglycans to form part of the extracellular matrix. The protein contains thyroglobulin type-1, follistatin-like, and calcium-binding domains, and has glycosaminoglycan attachment sites in the acidic C-terminal region. Three alternatively spliced transcript variants that encode different protein isoforms have been described for this gene. [provided by RefSeq, Oct 2011]

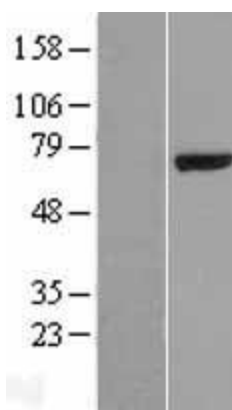
Product images:



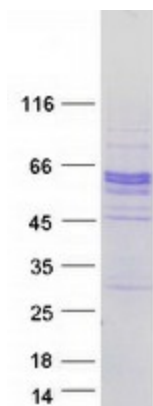
Circular map for RC203974



HEK293T cells were transfected with the pCMV6-ENTRY control (Cat# [PS100001], Left lane) or pCMV6-ENTRY SPOCK2 (Cat# RC203974, Right lane) cDNA for 48 hrs and lysed. Equivalent amounts of cell lysates (5 ug per lane) were separated by SDS-PAGE and immunoblotted with anti-SPOCK2 antibody (Cat# [TA810950]). Positive lysates [LY414995] (100ug) and [LC414995] (20ug) can be purchased separately from OriGene.



Western blot validation of overexpression lysate (Cat# [LY414995]) using anti-DDK antibody (Cat# [TA50011-100]). Left: Cell lysates from untransfected HEK293T cells; Right: Cell lysates from HEK293T cells transfected with RC203974 using transfection reagent MegaTran 2.0 (Cat# [TT210002]).



Coomassie blue staining of purified SPOCK2 protein (Cat# [TP303974]). The protein was produced from HEK293T cells transfected with SPOCK2 cDNA clone (Cat# RC203974) using MegaTran 2.0 (Cat# [TT210002]).