

Product datasheet for **RC203971**

APOBEC3C (NM_014508) Human Tagged ORF Clone

Product data:

Product Type: Expression Plasmids
Product Name: APOBEC3C (NM_014508) Human Tagged ORF Clone
Tag: Myc-DDK
Symbol: APOBEC3C
Synonyms: A3C; APOBEC1L; ARDC2; ARDC4; ARP5; bK150C2.3; PBI
Mammalian Cell Selection: Neomycin
Vector: pCMV6-Entry (PS100001)
E. coli Selection: Kanamycin (25 ug/mL)
ORF Nucleotide Sequence: >RC203971 ORF sequence
Red=Cloning site Blue=ORF Green=Tags(s)

TTTTGTAATACGACTCACTATAGGGCGGCCGGAATTCGTCGACTGGATCCGGTACCGAGGAGATCTGCC
GCC**CGATCGCC**

ATGAATCCACAGATCAGAAACCCGATGAAGGCAATGTATCCAGGCACATTCTACTTCCAATTTAAAAACC
TATGGGAAGCCAACGATCGGGACGAACTTGGCTGTGCTTCCCGTGGAAGGTATAAAGCGCCGCTCAGT
TGTCTCCTGGAAGACGGGCGTCTCCGAAACCAGGTGGATTCTGAGACCCATTGTCATGCAGAAAGGTGC
TTCTCTCTTGGTTCTGCGACGACATACTGTCTCCTAACACAAAGTACCAGGTACCTGGTACACATCTT
GGAGCCCTTGCCAGACTGTGCAGGGGAGGTGGCCGAGTTCCTGGCCAGGCACAGCAACGTGAATCTCAC
CATCTTACCAGCCCGCTCTACTACTTCCAGTATCCATGTTACCAGGAGGGCTCCGCAGCCTGAGTCAG
GAAGGGGTCGCTGTGGAGATCATGGACTATGAAGATTTTAAATATTGTTGGGAAAACCTTTGTGTACAATG
ATAATGAGCCATTCAAGCCTTGAAGGGATTA AAAACCACTTTTCGACTTCTGAAAAGAAGGCTACGGGA
GAGTCTCCAG

ACGCGTACGCGGCCGCTCGAGCAGAACTCATCTCAGAAGAGGATCTGGCAGCAATGATATCCTGGATT
ACAAGGATGACGACGATAAGGTTTAA

Protein Sequence: >RC203971 protein sequence
Red=Cloning site Green=Tags(s)

MNPQIRNPMKAMYPGTFYFQFKNLWEANDRDETWLCTVEGIKRRSVVSWKTGVFRNQVDSETHCHAERC
FLSWFCDDILSPNTKYQVTWYTSWSPDCAGEVAEFLARHSNVNLTIFTARLYYFYQYPCYQEGLRSLSQ
EGVAVEIMDYEDFKYCWENFVYNDNEPFKPKWGLKTNFRLLKRRLRESLQ

TRTRPLEQKLISEEDLAANDILDYKDDDDKV

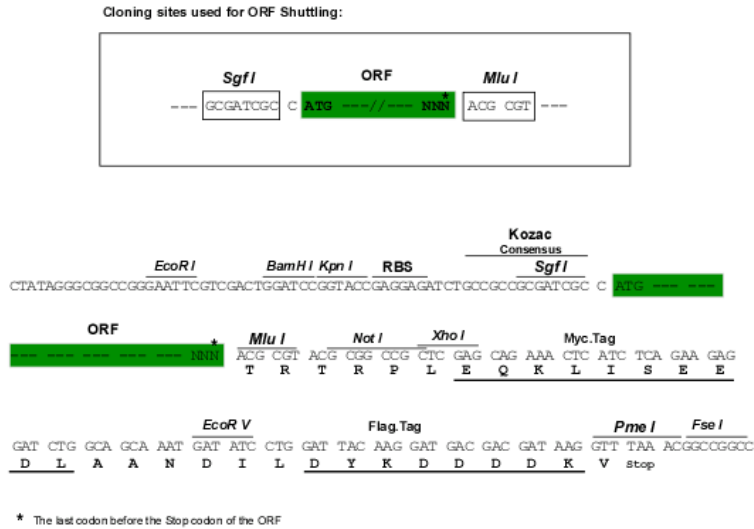


[View online »](#)

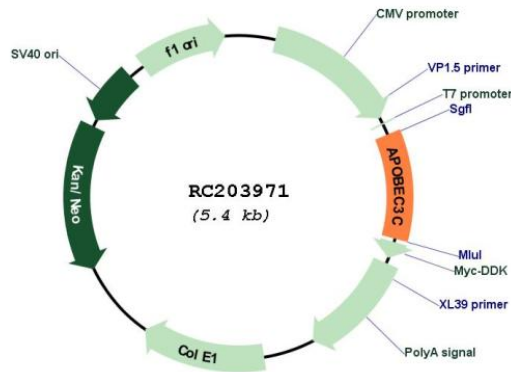
Chromatograms: https://cdn.origene.com/chromatograms/mk6422_a09.zip

Restriction Sites: SgfI-MluI

Cloning Scheme:



Plasmid Map:



ACCN: NM_014508

ORF Size: 570 bp

OTI Disclaimer: Due to the inherent nature of this plasmid, standard methods to replicate additional amounts of DNA in E. coli are highly likely to result in mutations and/or rearrangements. Therefore, OriGene does not guarantee the capability to replicate this plasmid DNA. Additional amounts of DNA can be purchased from OriGene with batch-specific, full-sequence verification at a reduced cost. Please contact our customer care team at custsupport@origene.com or by calling 301.340.3188 option 3 for pricing and delivery.

The molecular sequence of this clone aligns with the gene accession number as a point of reference only. However, individual transcript sequences of the same gene can differ through naturally occurring variations (e.g. polymorphisms), each with its own valid existence. This clone is substantially in agreement with the reference, but a complete review of all prevailing variants is recommended prior to use. [More info](#)

OTI Annotation: This clone was engineered to express the complete ORF with an expression tag. Expression varies depending on the nature of the gene.

Components: The ORF clone is ion-exchange column purified and shipped in a 2D barcoded Matrix tube containing 10ug of transfection-ready, dried plasmid DNA (reconstitute with 100 ul of water).

Reconstitution Method:

1. Centrifuge at 5,000xg for 5min.
2. Carefully open the tube and add 100ul of sterile water to dissolve the DNA.
3. Close the tube and incubate for 10 minutes at room temperature.
4. Briefly vortex the tube and then do a quick spin (less than 5000xg) to concentrate the liquid at the bottom.
5. Store the suspended plasmid at -20°C. The DNA is stable for at least one year from date of shipping when stored at -20°C.

RefSeq: [NM_014508.1](#)

RefSeq Size: 1127 bp

RefSeq ORF: 573 bp

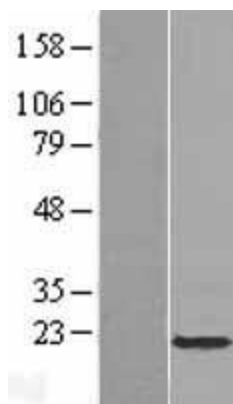
Locus ID: 27350

UniProt ID: [Q9NRW3](#)

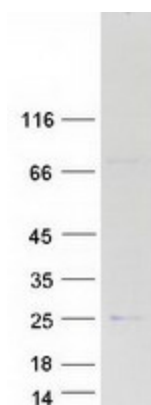
Cytogenetics: 22q13.1

MW: 22.8 kDa

Gene Summary: This gene is a member of the cytidine deaminase gene family. It is one of seven related genes or pseudogenes found in a cluster thought to result from gene duplication, on chromosome 22. Members of the cluster encode proteins that are structurally and functionally related to the C to U RNA-editing cytidine deaminase APOBEC1. It is thought that the proteins may be RNA editing enzymes and have roles in growth or cell cycle control. [provided by RefSeq, Jul 2008]

Product images:

Western blot validation of overexpression lysate (Cat# [LY415212]) using anti-DDK antibody (Cat# [TA50011-100]). Left: Cell lysates from untransfected HEK293T cells; Right: Cell lysates from HEK293T cells transfected with RC203971 using transfection reagent MegaTran 2.0 (Cat# [TT210002]).



Coomassie blue staining of purified APOBEC3C protein (Cat# [TP303971]). The protein was produced from HEK293T cells transfected with APOBEC3C cDNA clone (Cat# RC203971) using MegaTran 2.0 (Cat# [TT210002]).