

## Product datasheet for **RC203970**

### STEAP1 (NM\_012449) Human Tagged ORF Clone

#### Product data:

**Product Type:** Expression Plasmids  
**Product Name:** STEAP1 (NM\_012449) Human Tagged ORF Clone  
**Tag:** Myc-DDK  
**Symbol:** STEAP1  
**Synonyms:** PRSS24; STEAP  
**Mammalian Cell Selection:** Neomycin  
**Vector:** pCMV6-Entry (PS100001)  
**E. coli Selection:** Kanamycin (25 ug/mL)  
**ORF Nucleotide Sequence:** >RC203970 ORF sequence  
Red=Cloning site Blue=ORF Green=Tags(s)

TTTTGTAATACGACTCACTATAGGGCGGCCGGAATTCGTCGACTGGATCCGGTACCGAGGAGATCTGCC  
GCC**CGGATCGCC**

ATGGAAAGCAGAAAAGACATCACAAACCAAGAAGAACTTTGGAAAATGAAGCCTAGGAGAAATTTAGAAG  
AAGACGATTATTTGCATAAAGACACGGGAGAGACCAGCATGCTAAAAAGACCTGTGCTTTTGCATTTGCA  
CCAAACAGCCCATGCTGATGAATTTGACTGCCCTCAGAACTTCAGCACACAGGAACTCTTCCACAG  
TGGCACTTGCCAATTAATAAGCTGCTATTATAGCATCTCTGACTTTTCTTACACTCTTCTGAGGGAAG  
TAATTCACCTTTAGCAACTTCCCATCAACAATATTTTTATAAAATCCAATCCTGGTCATCAACAAAGT  
CTTGCCAATGGTTTCCATCACTCTCTTGCCATTGGTTACCTGCCAGGTGTGATAGCAGCAATTGTCCAA  
CTTCATAATGGAACCAAGTATAAGAAGTTTCCACATTGGTTGGATAAGTGGATGTTAACAAGAAAGCAGT  
TTGGGCTTCTCAGTTTCTTTTTGCTGTACTGCATGCAATTTATAGTCTGTCTTACCCAATGAGGCGATC  
CTACAGATACAAGTTGCTAAACTGGGCATATCAACAGGTCCAACAAAATAAAGAAGATGCCTGGATTGAG  
CATGATGTTTGGAGAATGGAGATTTATGTGTCTCTGGGAATTGTGGGATTGGCAACTGGCTCTGTTGG  
CTGTGACATCTATTCCATCTGTGAGTGACTCTTGACATGGAGAGAATTTCACTATATTCAGAGCAAGCT  
AGGAATTTGTTCCCTTCTACTGGGCACAATACACGCATTGATTTTTGCCTGGAATAAGTGGATAGATATA  
AAACAATTTGTATGGTATACACCTCCAACTTTTATGATAGCTGTTTTCTTCCAATTGTTGTCCTGATAT  
TTAAAAGCATACTATTCTGCCATGCTTGAGGAAGAAGATACTGAAGATTAGACATGGTTGGGAAGACGT  
CACCAAAATTAACAAAAGTGAATATGTTCCAGTTG

**ACGCGT**ACGCGGCCGCTCGAGCAGAACTCATCTCAGAAGAGGATCTGGCAGCAAATGATATCCTGGATT  
ACAAGGATGACGACGATAAGGTTTAA



Protein Sequence: >RC203970 protein sequence  
 Red=Cloning site Green=Tags(s)

MESRKDITNQEELWKMKPRRNLEEDDYLHKDTGETSMLKRPVLLHLHQTAAHADEFDCPSELQHTQELFPQ  
 WHLPKIAAIIASLTFLYTLLREVIHPLATSHQQYFYKIPILVINKVLPVMSITLLALVYLPGVIAAIVQ  
 LHNGTKYKFFPHLWDKWLTRKQFGLLSFFFVAVLHAIYSLYPMRRSYRYKLLNWAYQQVQNKEDAWIE  
 HDVWRMEIYVSLGIVGLAILALLAVTSIPSVSDSLTWREFHYIQSKLGIYVSLLLGTIHALIFAWNKWIDI  
 KQFVWYTPPTFMIAVFLPIVVLIFKSIILFLPCLRKKILKIRHGWEDVTKINKTEICSQL

TRTRPLEQKLISEEDLAANDILDYKDDDDKV

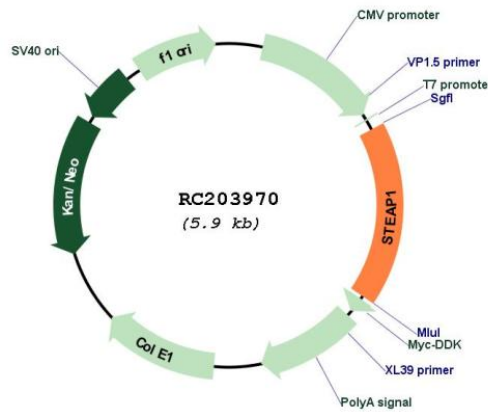
Chromatograms: [https://cdn.origene.com/chromatograms/mk6058\\_c08.zip](https://cdn.origene.com/chromatograms/mk6058_c08.zip)

Restriction Sites: SgfI-MluI

Cloning Scheme:



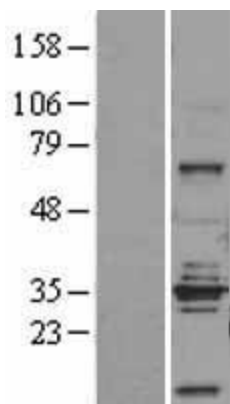
Plasmid Map:



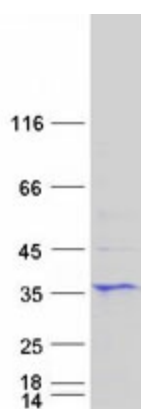
ACCN: NM\_012449

|                               |  |
|-------------------------------|--|
| <b>ORF Size:</b>              | 1017 bp  |
| <b>OTI Disclaimer:</b>        | <p>Due to the inherent nature of this plasmid, standard methods to replicate additional amounts of DNA in E. coli are highly likely to result in mutations and/or rearrangements. Therefore, OriGene does not guarantee the capability to replicate this plasmid DNA. Additional amounts of DNA can be purchased from OriGene with batch-specific, full-sequence verification at a reduced cost. Please contact our customer care team at <a href="mailto:custsupport@origene.com">custsupport@origene.com</a> or by calling 301.340.3188 option 3 for pricing and delivery.</p> <p>The molecular sequence of this clone aligns with the gene accession number as a point of reference only. However, individual transcript sequences of the same gene can differ through naturally occurring variations (e.g. polymorphisms), each with its own valid existence. This clone is substantially in agreement with the reference, but a complete review of all prevailing variants is recommended prior to use. <a href="#">More info</a></p> |
| <b>OTI Annotation:</b>        | This clone was engineered to express the complete ORF with an expression tag. Expression varies depending on the nature of the gene.   |
| <b>Components:</b>            | The ORF clone is ion-exchange column purified and shipped in a 2D barcoded Matrix tube containing 10ug of transfection-ready, dried plasmid DNA (reconstitute with 100 ul of water).   |
| <b>Reconstitution Method:</b> | <ol style="list-style-type: none"> <li>1. Centrifuge at 5,000xg for 5min.</li> <li>2. Carefully open the tube and add 100ul of sterile water to dissolve the DNA.</li> <li>3. Close the tube and incubate for 10 minutes at room temperature.</li> <li>4. Briefly vortex the tube and then do a quick spin (less than 5000xg) to concentrate the liquid at the bottom.</li> <li>5. Store the suspended plasmid at -20°C. The DNA is stable for at least one year from date of shipping when stored at -20°C.</li> </ol>  |
| <b>RefSeq:</b>                | <a href="#">NM_012449.3</a>  |
| <b>RefSeq Size:</b>           | 1330 bp  |
| <b>RefSeq ORF:</b>            | 1020 bp  |
| <b>Locus ID:</b>              | 26872  |
| <b>UniProt ID:</b>            | <a href="#">Q9UHE8</a>   |
| <b>Cytogenetics:</b>          | 7q21.13  |
| <b>Protein Families:</b>      | Transmembrane  |
| <b>MW:</b>                    | 39.9 kDa   |
| <b>Gene Summary:</b>          | <p>This gene is predominantly expressed in prostate tissue, and is found to be upregulated in multiple cancer cell lines. The gene product is predicted to be a six-transmembrane protein, and was shown to be a cell surface antigen significantly expressed at cell-cell junctions. [provided by RefSeq, Jul 2008]</p>   |

## Product images:



Western blot validation of overexpression lysate (Cat# [LY402215]) using anti-DDK antibody (Cat# [TA50011-100]). Left: Cell lysates from untransfected HEK293T cells; Right: Cell lysates from HEK293T cells transfected with RC203970 using transfection reagent MegaTran 2.0 (Cat# [TT210002]).



Coomassie blue staining of purified STEAP1 protein (Cat# [TP303970]). The protein was produced from HEK293T cells transfected with STEAP1 cDNA clone (Cat# RC203970) using MegaTran 2.0 (Cat# [TT210002]).