

Product datasheet for **RC203960**

ARMC7 (NM_024585) Human Tagged ORF Clone

Product data:

Product Type: Expression Plasmids
 Product Name: ARMC7 (NM_024585) Human Tagged ORF Clone
 Tag: Myc-DDK
 Symbol: ARMC7
 Mammalian Cell Selection: Neomycin
 Vector: pCMV6-Entry (PS100001)
 E. coli Selection: Kanamycin (25 ug/mL)
 ORF Nucleotide Sequence: >RC203960 ORF sequence
 Red=Cloning site Blue=ORF Green=Tags(s)

TTTTGTAATACGACTCACTATAGGGCGGCCGGAATTCGTCGACTGGATCCGGTACCGAGGAGATCTGCC
 GCC**CGATCGCC**

ATGGCCCAGAAGCCGAAGGTGGACCCCCACGTCGGGGGGCTGGGATACCTGCAGGCGCTGGTCACGGAAT
 TCCAGGAGACCCAAAGCCAAGACGCCAAGGAGCAAGTCCCGCCAACCTCGCCAACCTCGCTTATGACCC
 CAGCAACTACGAGTATCTGCGGCAGCTGCAGGTCTGGATTTATTTCTCGATTGCTGTCGGAGGAGAAT
 GAGACCCCTGGTGGAGTTTGCTATTGGAGGCCTGTGCAACCTGTGCCAGACAGGGCCAACAAGGAGCACA
 TCTGCACGCAGGAGGTGCCACTCATCACTGCCTATCCAGCCCCAATGAGGAGACGGTGTCTGTC
 TGCCATCACACGCTCATGCACCTGAGCCCGGGCCGAGCTTTCTCCAGAGCTGACCGCCAGCACC
 GTGGTGCAGTGCATGCTTCGCTTCTCCCTCTCGCCAGCGCCAGGCTCCGGAACCTGGCACAGATCTTCC
 TGGAGGACTTCTGCTCCCCCGCCAGGTGGCCGAGGCCCGCAGCCGGCAGGCGCACTCTGCCCTGGGTAT
 CCCACTGCCGAGGAGCGTGGCCCCACGGCAGCGC

ACGCGTACGCGGGCCGCTCGAGCAGAACTCATCTCAGAAGAGGATCTGGCAGCAAATGATATCTGGATT
 ACAAGGATGACGACGATAAGGTTTAA

Protein Sequence: >RC203960 protein sequence
 Red=Cloning site Green=Tags(s)

MAQKPKVDPHVGRLGYLQALVTEFQETQSQDAKEQVLANLANFAYDPSNYEYLRQLQVLDLFLDSLSEEN
 ETLVEFAIGGLCNLCPDRANKEHILHAGGVPLIINCLSSPNEETVLSAITTLMHLSPPGRSFLPELTATP
 VVQCMLRFSLSASARLRNLAQIFLEDFCSPRQVAEARSRQAHSALGIPLPRSVAPRQR

TRTRPLEQKLISEEDLAANDILDYKDDDDKV

Chromatograms: https://cdn.origene.com/chromatograms/mk6432_c10.zip



Restriction Sites: SgfI-MluI

Cloning Scheme:



ACCN: NM_024585

ORF Size: 594 bp

OTI Disclaimer: The molecular sequence of this clone aligns with the gene accession number as a point of reference only. However, individual transcript sequences of the same gene can differ through naturally occurring variations (e.g. polymorphisms), each with its own valid existence. This clone is substantially in agreement with the reference, but a complete review of all prevailing variants is recommended prior to use. [More info](#)

OTI Annotation: This clone was engineered to express the complete ORF with an expression tag. Expression varies depending on the nature of the gene.

Components: The ORF clone is ion-exchange column purified and shipped in a 2D barcoded Matrix tube containing 10ug of transfection-ready, dried plasmid DNA (reconstitute with 100 ul of water).

- Reconstitution Method:
1. Centrifuge at 5,000xg for 5min.
 2. Carefully open the tube and add 100ul of sterile water to dissolve the DNA.
 3. Close the tube and incubate for 10 minutes at room temperature.
 4. Briefly vortex the tube and then do a quick spin (less than 5000xg) to concentrate the liquid at the bottom.
 5. Store the suspended plasmid at -20°C. The DNA is stable for at least one year from date of shipping when stored at -20°C.

RefSeq: [NM_024585.4](#)

RefSeq Size: 2146 bp

RefSeq ORF: 597 bp

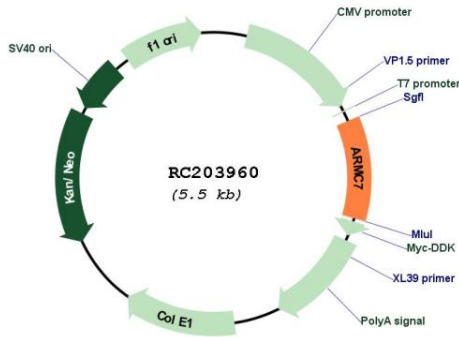
Locus ID: 79637

UniProt ID: [Q9H6L4](#)

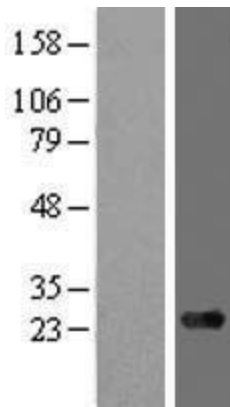
Cytogenetics: 17q25.1

MW: 21.9 kDa

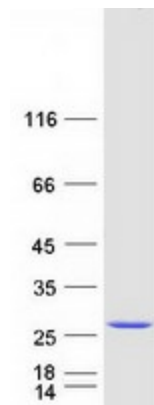
Product images:



Circular map for RC203960



Western blot validation of overexpression lysate (Cat# [LY411220]) using anti-DDK antibody (Cat# [TA50011-100]). Left: Cell lysates from untransfected HEK293T cells; Right: Cell lysates from HEK293T cells transfected with RC203960 using transfection reagent MegaTran 2.0 (Cat# [TT210002]).



Coomassie blue staining of purified ARMC7 protein (Cat# [TP303960]). The protein was produced from HEK293T cells transfected with ARMC7 cDNA clone (Cat# RC203960) using MegaTran 2.0 (Cat# [TT210002]).