

Product datasheet for **RC203957**

CSEN (KCNIP3) (NM_013434) Human Tagged ORF Clone

Product data:

Product Type:	Expression Plasmids
Product Name:	CSEN (KCNIP3) (NM_013434) Human Tagged ORF Clone
Tag:	Myc-DDK
Symbol:	CSEN
Synonyms:	CSEN; DREAM; KCHIP3
Mammalian Cell Selection:	Neomycin
Vector:	pCMV6-Entry (PS100001)
E. coli Selection:	Kanamycin (25 ug/mL)
ORF Nucleotide Sequence:	>RC203957 ORF sequence Red=Cloning site Blue=ORF Green=Tags(s)

TTTTGTAATACGACTCACTATAGGGCGGCCGGAATTCGTCGACTGGATCCGGTACCGAGGAGATCTGCC
GCC**CGATCGCC**

ATGCAGCCGGCTAAGGAAGTGACAAAGGCGTCGGACGGCAGCCTCCTGGGGACCTCGGGCACACACCAC
TTAGCAAGAAGGAGGGTATCAAGTGGCAGAGGCCGAGGCTCAGCCGCCAGGCTTTGATGAGATGCTGCCT
GGTCAAGTGGATCCTGTCCAGCACAGCCCCACAGGGCTCAGATAGCAGCGACAGTGAGCTGGAGCTGTCC
ACGGTGCGCCACCAGCCAGAGGGGCTGGACCAGCTGCAGGCCAGACCAAGTTCACCAAGAAGGAGCTGC
AGTCTCTCTACAGGGCTTTAAGAATGAGTGTCCACGGGCTGGTGGACGAAGACACCTCAAACCTCAT
TTACGCGCAGTTCTCCCTCAGGGAGATGCCACCACCTATGCACACTTCTCTTCAACGCCCTTTGATGCG
GACGGGAACGGGGCCATCCACTTTGAGGACTTTGTGGTTGGCCTCTCATCCTGTGCGGGGCACAGTCC
ACGAGAAGCTCAAGTGGCCTTTAATCTCTACGACATTAACAAGGATGGCTACATCACCAAGAGGAGAT
GCTGGCCATCATGAAGTCCATCTATGACATGATGGGCCGCCACACCTACCCCATCCTGCGGGAGGACGCG
CCGGCGGAGCACGTGGAGAGGTTCTTCGAGAAAATGGACCGGAACCAGGATGGGGTAGTGACCATTGAAG
AGTTCTGGAGGCTGTGAGAAGGATGAGAACATCATGAGCTCCATGCAGCTGTTTGAGAATGTCATC

ACGCGTACGCGGCCGCTCGAGCAGAACTCATCTCAGAAGAGGATCTGGCAGCAAATGATATCCTGGATT
ACAAGGATGACGACGATAAGGTTTAA



[View online »](#)

Protein Sequence: >RC203957 protein sequence
Red=Cloning site Green=Tags(s)

MQPAKEVTKASDGSL LGDLGHTPLSKKEGIKWQRPRLSRQALMRCCLVKWILSSTAPQGSDDSELELS
 TVRHQPEGLDQLQAQTKFKKELQSLYRFGKNECPTGLVDEDTFKLIYAQFFPQGDATTYAHFLFNAFDA
 DNGAIHFEDFVVGLSILLRGTVHEKWKWAFNLYDINKDGYITKEEMLAIMKSIYDMMRHTYPIILREDA
 PAEHVERFFEKMDRNQDGVVTIEEFLEACQKDENIMSSMQLFENVI

TRTRPLEQKLISEEDLAANDILDYKDDDDKV

Chromatograms: https://cdn.origene.com/chromatograms/mk6302_e10.zip

Restriction Sites: SgfI-MluI

Cloning Scheme:

Cloning sites used for ORF Shuttling:



* The last codon before the Stop codon of the ORF

ACCN: NM_013434

ORF Size: 768 bp

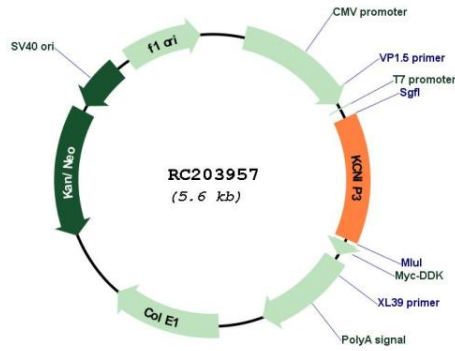
OTI Disclaimer: The molecular sequence of this clone aligns with the gene accession number as a point of reference only. However, individual transcript sequences of the same gene can differ through naturally occurring variations (e.g. polymorphisms), each with its own valid existence. This clone is substantially in agreement with the reference, but a complete review of all prevailing variants is recommended prior to use. [More info](#)

OTI Annotation: This clone was engineered to express the complete ORF with an expression tag. Expression varies depending on the nature of the gene.

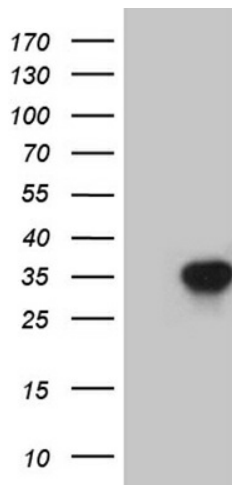
Components: The ORF clone is ion-exchange column purified and shipped in a 2D barcoded Matrix tube containing 10ug of transfection-ready, dried plasmid DNA (reconstitute with 100 ul of water).

Reconstitution Method:	<ol style="list-style-type: none">1. Centrifuge at 5,000xg for 5min.2. Carefully open the tube and add 100ul of sterile water to dissolve the DNA.3. Close the tube and incubate for 10 minutes at room temperature.4. Briefly vortex the tube and then do a quick spin (less than 5000xg) to concentrate the liquid at the bottom.5. Store the suspended plasmid at -20°C. The DNA is stable for at least one year from date of shipping when stored at -20°C.
Note:	Plasmids are not sterile. For experiments where strict sterility is required, filtration with 0.22um filter is required.
RefSeq:	NM_013434.5
RefSeq Size:	2928 bp
RefSeq ORF:	771 bp
Locus ID:	30818
UniProt ID:	Q9Y2W7
Cytogenetics:	2q11.1
Protein Families:	Druggable Genome, Transcription Factors, Transmembrane
MW:	29.2 kDa
Gene Summary:	<p>This gene encodes a member of the family of voltage-gated potassium (Kv) channel-interacting proteins, which belong to the recoverin branch of the EF-hand superfamily. Members of this family are small calcium binding proteins containing EF-hand-like domains. They are integral subunit components of native Kv4 channel complexes that may regulate A-type currents, and hence neuronal excitability, in response to changes in intracellular calcium. The encoded protein also functions as a calcium-regulated transcriptional repressor, and interacts with presenilins. Alternatively spliced transcript variants encoding different isoforms have been described. [provided by RefSeq, Jul 2008]</p>

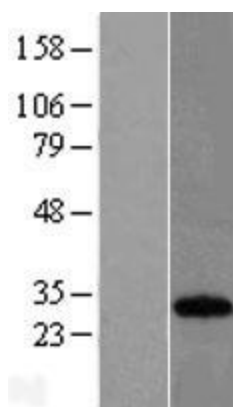
Product images:



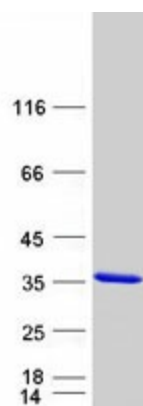
Circular map for RC203957



HEK293T cells were transfected with the pCMV6-ENTRY control (Cat# [PS100001], Left lane) or pCMV6-ENTRY KCNIP3 (Cat# RC203957, Right lane) cDNA for 48 hrs and lysed. Equivalent amounts of cell lysates (5 ug per lane) were separated by SDS-PAGE and immunoblotted with anti-KCNIP3 (1:500) (Cat# [TA804386]). Positive lysates [LY415545] (100ug) and [LC415545] (20ug) can be purchased separately from OriGene.



Western blot validation of overexpression lysate (Cat# [LY415545]) using anti-DDK antibody (Cat# [TA50011-100]). Left: Cell lysates from untransfected HEK293T cells; Right: Cell lysates from HEK293T cells transfected with RC203957 using transfection reagent MegaTran 2.0 (Cat# [TT210002]).



Coomassie blue staining of purified KCNIP3 protein (Cat# [TP303957]). The protein was produced from HEK293T cells transfected with KCNIP3 cDNA clone (Cat# RC203957) using MegaTran 2.0 (Cat# [TT210002]).