

Product datasheet for **RC203954**

gamma Adaptin (AP1G1) (NM_001030007) Human Tagged ORF Clone

Product data:

Product Type:	Expression Plasmids
Product Name:	gamma Adaptin (AP1G1) (NM_001030007) Human Tagged ORF Clone
Tag:	Myc-DDK
Symbol:	gamma Adaptin
Synonyms:	ADTG; CLAPG1
Mammalian Cell Selection:	Neomycin
Vector:	pCMV6-Entry (PS100001)
E. coli Selection:	Kanamycin (25 ug/mL)



[View online »](#)

ORF Nucleotide
Sequence:

>RC203954 representing NM_001030007
Red=Cloning site Blue=ORF Green=Tags(s)

TTTTGTAATACGACTCACTATAGGGCGGCCGGGAATTCGTCGACTGGATCCGGTACCGAGGAGATCTGCC
GCC**CGCATCGCC**

ATGCCAGCCCCATCAGATTGCGGGAGCTGATCCGGACCATCCGGACAGCCCGAACCAAGCTGAAGAAC
GAGAAATGATCCAGAAAGAAATGTCTGCAATCCGGTCATCTTTAGAGAAGAAGACAATACATACCGATG
TCGGAATGTGGCAAAATTAAGTATATGCACATGCTGGGCTACCTGCTCACTTTGGACAGTTGGAGTGC
TTCAAGCTTATTGCCTCTCAAAAATTTACAGACAAACGCATTGGCTATTTAGGGGCAATGCTGCTTTAG
ATGAAAGACAAGATGTCCATCTTCTCATGACCAACTGTATCAAGAATGATCTTAATCATAGCACGCAATT
CGTACAGGGGTTAGCACTTTGTACCCTCGGCTGCATGGGCTCCTCAGAGATGTGCAGAGATCTTGCAGGA
GAGGTAGAGAAGCTCCTGAAAACCTCCAACCTTACTTAAGAAAAAGGCAGCACTGTGTGCTGTTTCATG
TCATCAGGAAAGTTCCTGAACCTTATGGAGATGTTTTACCAGCAACAAAAATTTATTGAATGAGAAGAA
CCATGGTGTCTCCACACATCTGTAGTCTCCTCACAGAAATGTGTGAGCGAAGCCAGACATGCTTGCG
CATTTTCAGAAAGAATGAAAAGCTTGTGCCCAATTAGTTCGTATTTAAAGAACCTCATCATGTCCGGAT
ATTCACCAAGAACATGATGTTTCTGGTATCAGTGACCCCTTTTGCAGGTACGAATTTTGGGTTATTAAG
AATTTTAGGACGAAATGATGATGATTCAAGTGAAGCTATGAATGATATATTAGCACAGGTTGCCACTAAT
ACTGAGACTAGTAAAAATGTAGGAAATGCTATTCTTTATGAAACGGTTTTGACTATCATGGATATTAAGT
CAGAGAGTGGATTGCGAGTCTAGCCATAAATATCCTGGGTCGTTTTCTTATTGAACAATGACAAGAATAT
TAGATATGTGGCTCTGACATCTTTGTTGAAGACTGTACAGACAGATCATAATGCAGTACAGAGGCACAGA
AGCACAATTGTGGACTGTCTAAAGATTTGGATGTCTCAATAAAACGGCGTCAATGGAATGAGTTTTG
CCCTGGTAAATGGGAATAATATCCGAGGCATGATGAAAGAATTACTTTATTTTCTGGATTGCTGAGCC
AGAATTTAAAGCAGACTGTGCATCTGGAATCTTTCTTGCTGCAGAAAAGTATGCACCTTCCAACGATGG
CATATAGACACAATTATGCGTGTTTTGACAACGGCAGGAAGTTATGTTTCGTGATGATGCAGTCCCAATT
TAATCCAGTTAATAACTAATAGTGTGGAGATGCATGCCTATACTGTCCAGCGCCTGTACAAGCAATTCT
TGGTGATTATTCTCAACAACCTTTGGTACAAGTGGCTGCATGGTGTATAGGTGAATATGGTATCTTCTT
GTATCTGGCCAGTGTGAAGAGGAAGAGCCTATTCAGGTAACAGAGGATGAAGTGTGGATATTTAGAAA
GTGTCCTAATCTAATATGTCCACCTCTGTGACACGAGGTTATGCCCTCACTGCCATTATGAAGCTTTC
CACTCGATTCACTTGTACTGTAAACCGAATTAAGAAAGTGGTTTCCATCTACGGAAGCAGCATTGATGTG
GAACTCCAGCAGAGGGCAGTAGAATATAATGCACCTTTTCAAGAAATATGACCACATGAGGCTGCCCCTAC
TTGAGAGAATGCCTGTATGAAAAAGTGACCACAAATGGCCCTACTGAGATTGTGCAGACAAATGGAGA
GACAGAACCAGCTCCACTAGAGACCAAACCGCCACCCTCTGGGCCACAGCCACCAGCCAGGCCAATGAT
TTATTGGATTTGTTGGGAGGAAATGACATAACACCTGTTATTCCAACCTGCGCCTACAAGCAAACCATCTT
CTGCTGGTGGAGAATCTTGTATTTGCTGGGAGACATCAACCTTACAGGTGCTCCAGCTGCTGCTCCTGC
CCCTGCCTCAGTCCCACAGATATCCCAGCCCCCTTCTTGTGGATGGGCTTTCATCACAGCCTCTCTTC
AATGATATTGCTGCAGGCATCCCCTCCATCACAGCATACAGTAAGAATGGCTTGAAGATAGAATTCACCT
TTGAACGGTCAAATACCAACCCAGTGTAAAGTGTAAACAGTACAGGATACAGGCTCACAACAGCAGAGCTAGA
TATGACGGACTTTGTTTTCCAAGCTGCAGTACCAAAGACATTCCAGCTGCAGCTTGTCTCTCAGCAGC
AGCATTGTCCCAGCATTAAACAGGGGACCATCACACAAGTCATTAAGTTCTGAACCCTCAGAAGCAAC
AGCTGCGAATGCGGATCAAGCTTACATATAATCAAGGGCTCAGCAATGCAAGATCTAGCAGAGGTGAA
CAACTTCCCCCTCAGTCTGGCAA

ACGCGTACGCGGCCGCTCGAGCAGAAACTCATCTCAGAAGAGGATCTGGCAGCAATGATATCCTGGATT
ACAAGGATGACGACGATAAGGTTTAA

Protein Sequence: >RC203954 representing NM_001030007
Red=Cloning site Green=Tags(s)

MPAPIRLRELIRTIRTARTQAEEREMIQKECAAIRSSFREEDNTYRCRNVAKLLYMHMLGYPAHFGQLEC
FKLIASQKFTDKRIGYLGAMLLDERQDVHLLMTNCIKNDLNHSTQFVQGLALCTLGCMGSSEMCRDLA
EVEKLLKTSNSYLKKAALCAVHVIRKVPPELMEFLPATKNLLNEKNHGVLHTSVVLLTEMCERSPDMLA
HFRKNEKLVLPQLVRILKNLIMSGYSPEHDVSGISDPFLQVRILRLLRILGRNDDDSSEAMNDILAQVATN
TETSKNVGNAILYETVLTIMDIKSEGLRVLAINILGRFLLNNDKNIRYVALTSLKTVQTDHNAVQRHR
STIVDCLKDLVDVSIKRRAMELSFALVNGNIRGMMKELLYFLDSCEPEFKADCASGIFLAAEKYAPSKRW
HIDTIMRVLTTAGSYVRDDAVPNLIQLITNSVEMHAYTVQRLYKAILGDYSQQPLVQVAAWCIGEYGDLL
VSGQCEEEPIQVTEDEVLDILESVLISNMSTSVTRGYALTAIMKLSTRFTCTVNRKVVSIYSSIDV
ELQQRAVEYNALFKKYDHMRSALLERMPVMEKVTNNGPTEIVQTNGETEPAPLETKPPPSGPQPTSQAND
LLDLLGGNDITPVIPTAPTSPSSAGGELLDLLGDINLTGAPAAAPAPASVPQISQPPFLLDGLSSQPLF
NDIAAGIPSITAYSKNGLKIEFTFERSNTNPSVTVITIQASNSTELDMTDFVFQAAVPKTFQLQLLSPSS
SIVPAFNTGTITQVIKVLNPQKQLRMRIKLTYNHKGSAEQDLAEVNNFPPQSWQ

TRTRPLEQKLISEEDLAANDILDYKDDDDKV

Chromatograms: https://cdn.origene.com/chromatograms/mg3090_d05.zip

Restriction Sites: Sgfl-Mlul

Cloning Scheme:



ACCN: NM_001030007

ORF Size: 2475 bp

OTI Disclaimer: The molecular sequence of this clone aligns with the gene accession number as a point of reference only. However, individual transcript sequences of the same gene can differ through naturally occurring variations (e.g. polymorphisms), each with its own valid existence. This clone is substantially in agreement with the reference, but a complete review of all prevailing variants is recommended prior to use. [More info](#)

OTI Annotation: This clone was engineered to express the complete ORF with an expression tag. Expression varies depending on the nature of the gene.

Components: The ORF clone is ion-exchange column purified and shipped in a 2D barcoded Matrix tube containing 10ug of transfection-ready, dried plasmid DNA (reconstitute with 100 ul of water).

Reconstitution Method:

1. Centrifuge at 5,000xg for 5min.
2. Carefully open the tube and add 100ul of sterile water to dissolve the DNA.
3. Close the tube and incubate for 10 minutes at room temperature.
4. Briefly vortex the tube and then do a quick spin (less than 5000xg) to concentrate the liquid at the bottom.
5. Store the suspended plasmid at -20°C. The DNA is stable for at least one year from date of shipping when stored at -20°C.

RefSeq: [NM_001030007.1](#), [NP_001025178.1](#)

RefSeq Size: 6850 bp

RefSeq ORF: 2478 bp

Locus ID: 164

UniProt ID: [O43747](#)

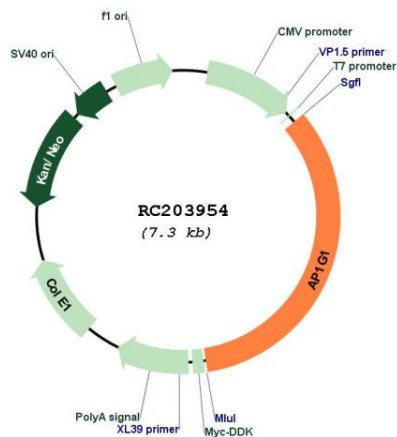
Cytogenetics: 16q22.2

Protein Pathways: Lysosome

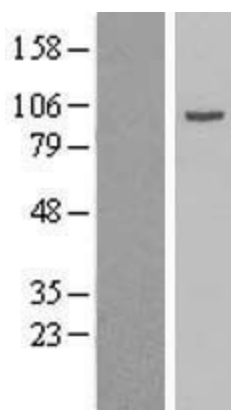
MW: 91.5 kDa

Gene Summary: Adaptins are important components of clathrin-coated vesicles transporting ligand-receptor complexes from the plasma membrane or from the trans-Golgi network to lysosomes. The adaptin family of proteins is composed of four classes of molecules named alpha, beta-, beta prime- and gamma- adaptins. Adaptins, together with medium and small subunits, form a heterotetrameric complex called an adaptor, whose role is to promote the formation of clathrin-coated pits and vesicles. The protein encoded by this gene is a gamma-adaptin protein and it belongs to the adaptor complexes large subunits family. Two transcript variants encoding different isoforms have been found for this gene. [provided by RefSeq, Jul 2008]

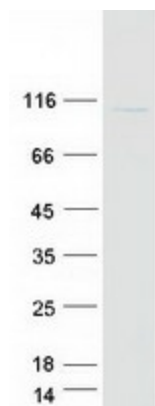
Product images:



Circular map for RC203954



Western blot validation of overexpression lysate (Cat# [LY422287]) using anti-DDK antibody (Cat# [TA50011-100]). Left: Cell lysates from untransfected HEK293T cells; Right: Cell lysates from HEK293T cells transfected with RC203954 using transfection reagent MegaTran 2.0 (Cat# [TT210002]).



Coomassie blue staining of purified AP1G1 protein (Cat# [TP303954]). The protein was produced from HEK293T cells transfected with AP1G1 cDNA clone (Cat# RC203954) using MegaTran 2.0 (Cat# [TT210002]).