

Product datasheet for **RC203953**

GTF3C5 (NM_012087) Human Tagged ORF Clone

Product data:

Product Type:	Expression Plasmids
Product Name:	GTF3C5 (NM_012087) Human Tagged ORF Clone
Tag:	Myc-DDK
Symbol:	GTF3C5
Synonyms:	TFiiiC2-63; TFIIIC63; TFIIICepsilon
Mammalian Cell Selection:	Neomycin
Vector:	pCMV6-Entry (PS100001)
E. coli Selection:	Kanamycin (25 ug/mL)



[View online »](#)

ORF Nucleotide Sequence:

>RC203953 ORF sequence
 Red=Cloning site Blue=ORF Green=Tags(s)

TTTTGTAATACGACTCACTATAGGGCGGCCGGGAATTCGTCGACTGGATCCGGTACCGAGGAGATCTGCC
 GCC**CGCATCGCC**

ATGGCGCGGAGGCGGCCGATTTGGGGCTGGGGCGCCGTCGCCGTGGAGCTGAGGCGGGAGCGACGCA
 TGGTGTGCGTGGAGTACCGGGAGTGGTGCCTGATGTGGCTAAGATGCTGCCGACTCTGGCGCGGAGGA
 AGGCGTCTCCCGATCTACGCAGACCCACCAAGAGGCTGGAGCTGTACTTCCGGCCCAAGGACCCATAC
 TGCCACCCAGTGTGCGCAACCGCTTCACTACCAGCAGCCTGCTGCTCCGCATCAGGAAGAGAACGAGGC
 GGCAGAAAGGGTCTGGGCACTGAGGCCACTCCGAGGTACATTTGACATGGAGATCCTTGGCATCAT
 CTCCACCATTTACAAATTTAGGGGATGTCTGACTTCCAGTACTTGGCTGTGCATACGGAAGCAGGCGGC
 AAGCATACGTCAATGTATGACAAGGTGCTCATGCTCCGGCCGAGAAGGAGGCCTTTTTCCACCAGGAGC
 TGCCGCTCTACATCCCCCACCATCTTCTCCCGCTGGACGCCCGGTGGACTACTTCTACCGACCAGA
 GACCCAGCACCGGAAGGCTACAACAATCCCCCATCTCAGGTGAGAATCTGATTGGCCTGAGCAGAGCC
 CGGCGCCCCACAATGCCATCTTTGTCAACTTTGAGGATGAGGAGGTGCCAAGCAGCCACTGGAGGCTG
 CAGCCCAGACGTGGAGGAGAGTCTGCACTAACCCCGTGGACCGGAAGGTGGAGGAGGAGCTGAGGAAGCT
 GTTTGACATCCGTCCTATCTGGTCCCGAAATGCTGTCAAGGCCAACATCAGCGTCCACCCAGACAAGCTC
 AAGGTCTTGCTTCCCTTCATAGCCTATTACATGATAACAGGCCCTGGCGCAGCCTATGGATTCCGATTTG
 GGTATGACCCCGAAAAAACCAGATGCCAAGATTTATCAAGTCTCGATTTCCGAATCCGTTGTGGAAT
 GAAACACGGTTACGCCCCAGTACTTCCCGGTCAAAGCAAAGCGCAGCACCTACAACACAGCCTCCCC
 ATCACCGTCAAGAAGACATCCAGCCAGCTTGTCAACATGCATGACCTGAAGCAGGGCCTGGGCCCTCGG
 GGACGAGTGGTGTCTCGGAAACCAGCTTCCAGCAAGTACAAGCTCAAGGACTCTGTCTACATCTTCCGGA
 AGGGGCCTTGCCACCCTATCGGCAGATGTTCTACCAGTTATGCGACTTGAATGTGGAAGAGTTGCAGAAG
 ATCATTACCCGAATGACGGGGCAGAGAATTCCTGCACAGAACGGGATGGGTGGTGCCTCCCAAGACCA
 CGCAGCAGCTCAGGGACACCATGTCCCTCATGATCCGGCAGACCATCCGCTCCAAGAGGCCTGCTCTCT
 TTCCAGCTCAGCCAAGGCTGATGGCGAAAAGAGCAGCTGACGTACGAGTCTGGGGAAGACGAGGAGGAT
 GAGGAGGAGGAGGAGGAGGAGGAGGACTTCAAGCCATCCGACGGCAGTAAAACGAAATGGAGACAG
 AGATTCTGGACTACGTG

ACGCGTACGCGGCCGCTCGAGCAGAAACTCATCTCAGAAGAGGATCTGGCAGCAAATGATATCCTGGATT
 ACAAGGATGACGACGATAAGGTTTAA

Protein Sequence:

>RC203953 protein sequence
 Red=Cloning site Green=Tags(s)

MAAEAADLGLGAAPVELRRERRMVCVEYPGVVRDVAKMLPTLGGEEGVSRIYADPTKRELYFRPKDPY
 CHPVCANRFSTSSLLLRIRKRTRRQKGVLGTEAHSEVTFDMEILGIISTYKFGMSDFQYLAVHTEAGG
 KHTSMYDKVLMRPEKEAFFHQELPLYIPPPIFSRLDAPVDYFYRPETQHREGYNNPPISGENLIGLSRA
 RRPHNIAIFVNFEEDEVPKQPLEAAAQTWRRVCTNPVDRKVEEELRKLFDIRPIWSRNAVKANISVHPDKL
 KVLLEPFIAYYMITGPWRSWLWIRFGYDPRKNPDAKIYQVLDLFRIRCGMKHGYAPSDLPVKAKRSTYNYSLP
 ITVKKTSQVLVTHDLKQGLGPSGTSGARKPASSKYKLDKSVYIFREGALPPYRQMFYQLCDLNVEELQK
 I IHRNDGAENSCTERDGWCLPKTSDEL RDTMSLMIRQTI RSKRPALFSSAKADGGKEQLTYESGEDEED
 EEEEEEEEDFKPSDGENEMETEILDYV

TRTRPLEQKLISEEDLAANDILDYKDDDDKV

Chromatograms:

https://cdn.origene.com/chromatograms/mk6302_e07.zip

Restriction Sites:

Sgfl-MluI

Cloning Scheme:


ACCN: NM_012087

ORF Size: 1557 bp

OTI Disclaimer: The molecular sequence of this clone aligns with the gene accession number as a point of reference only. However, individual transcript sequences of the same gene can differ through naturally occurring variations (e.g. polymorphisms), each with its own valid existence. This clone is substantially in agreement with the reference, but a complete review of all prevailing variants is recommended prior to use. [More info](#)

OTI Annotation: This clone was engineered to express the complete ORF with an expression tag. Expression varies depending on the nature of the gene.

Components: The ORF clone is ion-exchange column purified and shipped in a 2D barcoded Matrix tube containing 10ug of transfection-ready, dried plasmid DNA (reconstitute with 100 ul of water).

- Reconstitution Method:**
1. Centrifuge at 5,000xg for 5min.
 2. Carefully open the tube and add 100ul of sterile water to dissolve the DNA.
 3. Close the tube and incubate for 10 minutes at room temperature.
 4. Briefly vortex the tube and then do a quick spin (less than 5000xg) to concentrate the liquid at the bottom.
 5. Store the suspended plasmid at -20°C. The DNA is stable for at least one year from date of shipping when stored at -20°C.

RefSeq: [NM_012087.4](#)

RefSeq Size: 2436 bp

RefSeq ORF: 1560 bp

Locus ID: 9328

UniProt ID: [Q9Y5Q8](#)

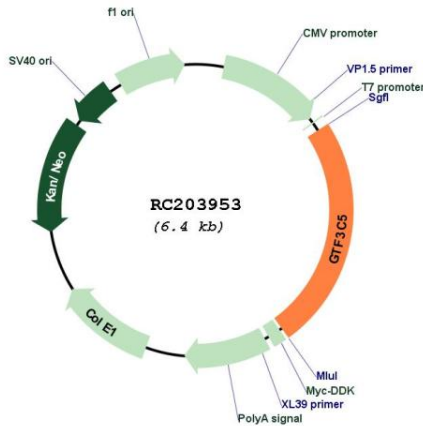
Cytogenetics: 9q34.13

Protein Families: Transcription Factors

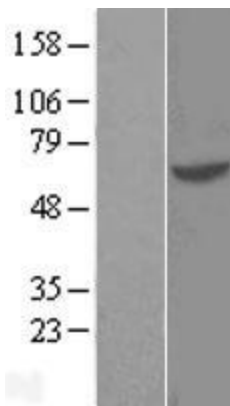
MW: 59.6 kDa

Gene Summary: Involved in RNA polymerase III-mediated transcription. Integral, tightly associated component of the DNA-binding TFIIIC2 subcomplex that directly binds tRNA and virus-associated RNA promoters.[UniProtKB/Swiss-Prot Function]

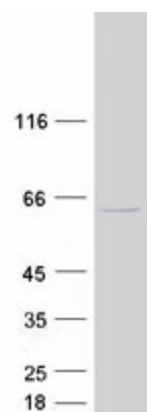
Product images:



Circular map for RC203953



Western blot validation of overexpression lysate (Cat# [LY415990]) using anti-DDK antibody (Cat# [TA50011-100]). Left: Cell lysates from untransfected HEK293T cells; Right: Cell lysates from HEK293T cells transfected with RC203953 using transfection reagent MegaTran 2.0 (Cat# [TT210002]).



Coomassie blue staining of purified GTF3C5 protein (Cat# [TP303953]). The protein was produced from HEK293T cells transfected with GTF3C5 cDNA clone (Cat# RC203953) using MegaTran 2.0 (Cat# [TT210002]).