

## Product datasheet for RC203950

### PHYHIPL (NM\_032439) Human Tagged ORF Clone

#### Product data:

Product Type:	Expression Plasmids
Product Name:	PHYHIPL (NM_032439) Human Tagged ORF Clone
Tag:	Myc-DDK
Symbol:	PHYHIPL
Mammalian Cell Selection:	Neomycin
Vector:	pCMV6-Entry (PS100001)
E. coli Selection:	Kanamycin (25 ug/mL)
ORF Nucleotide Sequence:	>RC203950 ORF sequence Red=Cloning site Blue=ORF Green=Tags(s)

TTTTGTAATACGACTCACTATAGGGCGGCCGGGAATTCGTCGACTGGATCCGGTACCGAGGAGATCTGCC  
GCC**CGATCGCC**

ATGGAGGTGCCGCGCCTGGATCATGCCCTCAACAGCCCCACCAGCCCCTGTGAGGAGGTGATCAAAAACC  
TCAGCCTGGAGGCCATTAGCTGTGCGACCGGGACGGGAACAAATCACAAGACAGTGGCATAGCAGAGAT  
GGAAGAAGTTCCTGTACACATAACATCAAAATAAGCAATATAACGTGTGACTCATTCAAGATTTTCATGG  
GAAATGGATTCAAAATCAAAGGATCGCATTACACACTATTTTATTGACCTCAACAAGAAAGAGAACAAGA  
ACTCCAATAAAATTTAAACACAAGGATGTTCCACAAAATTTGGTGCAAAAGCTGTTCCCTTGCCATGAC  
TGTCCGTGGACACTGGTTTTTAAGCCCAAGAAGTGAATATACAGTAGCAGTGCAGACTGCCTCAAAACAA  
GTTGATGGTGATTATGTTGTGTCTGAATGGAGTGAAATTATAGAATTCTGCACCGCAGACTATTCAAAAG  
TTCATCTAACACAATTGTTGGAGAAGGCTGAAGTGATTGCAGGACGCATGCTTAAGTTTTCTGTTTTTTA  
TCGTAATCAGCACAAAGAATATTTTACTATGTTTCGAGAACATCATGGGAATGCTATGCAGCCATCTGTC  
AAGGATAACAGTGGTAGCCATGGCTCTCCTATCAGTGGAAAATTAGAAGGCATCTTCTCAGCTGCAGCA  
CTGAATTCAACTGAAAGCCACCCAGGATTCACCTTATGGAAGATACAGTTTGAGATTGCCGAGA  
AAAACTTTTTAACCCCAATACTAATTACTTTGGGGACTTCTACTGTATGTACTGCTTATCATTAT  
GTGATTCTTGTTATTGCTCCTGTGGGATCACCAGGAGATGAATTTGTAAGCAGCGCCTTCTCACTAA  
ATTCTAAGGATAATAAATTTTTGACCTGTACAGAAGAAGATGGGGTGTGGTTTACCACCATGCCAGGA  
TGTCATTTTAGAAGTCATTTACTGACCTGTGGATCTTTCTCTGGGCACCGTGGCAGAAATCACTGGT  
CATCAGCTCATGAGTTTGTCTACTGCAAAATGCAAGAAAGATCCCAGCTGCAAAACCTGTAATATCAGT  
TTGGACGT

**ACGCGT**ACGCGGCCGCTCGAGCAGAACTCATCTCAGAAGAGGATCTGGCAGCAATGATATCCTGGATT  
ACAAGGATGACGACGATAAGGTTTAA



[View online »](#)

**Protein Sequence:** >RC203950 protein sequence  
Red=Cloning site Green=Tags(s)

MEVPRLDHALNSPTSPCEEVIKNSLEAIQLCDRDGNKSQDSGIAEMEELPVPHNIKISNITCDSFKISW  
 EMDSKSKDRITHYFIDLNKKENKNSNFKHKDVP TKLVAKAVPLPMTVRGHWFLSPRTEYTVAVQTASKQ  
 VDG DYV VSEWSE IIEFCTADYSKVHLTQLLEKAEVIAGRMLKFSVFYRNQHKEYFDYVREHHGNAMQPSV  
 KDN SGSHGSPISGKLEGIFFSCSTEFNTGKPPQDSPYGRYRFEIAAEKLFNPNTNLYFGDFYCMYTAYHY  
 VILVIAIPVGPDEFCKQRLPQLNSKDNKFLCTEEDGVLVYHHAQDVILEVIYDTPVDLSLGTVAEITG  
 HQLMSLSTANAKKDPSCKTCNISVGR

TRTRPLEQKLISEEDLAANDILDYKDDDDKV

**Chromatograms:** [https://cdn.origene.com/chromatograms/mk6087\\_e05.zip](https://cdn.origene.com/chromatograms/mk6087_e05.zip)

**Restriction Sites:** SgfI-MluI

**Cloning Scheme:**

Cloning sites used for ORF Shuttling:



\* The last codon before the Stop codon of the ORF

**ACCN:** NM\_032439

**ORF Size:** 1128 bp

**OTI Disclaimer:** The molecular sequence of this clone aligns with the gene accession number as a point of reference only. However, individual transcript sequences of the same gene can differ through naturally occurring variations (e.g. polymorphisms), each with its own valid existence. This clone is substantially in agreement with the reference, but a complete review of all prevailing variants is recommended prior to use. [More info](#)

**OTI Annotation:** This clone was engineered to express the complete ORF with an expression tag. Expression varies depending on the nature of the gene.

**Components:** The ORF clone is ion-exchange column purified and shipped in a 2D barcoded Matrix tube containing 10ug of transfection-ready, dried plasmid DNA (reconstitute with 100 ul of water).

**Reconstitution Method:**

1. Centrifuge at 5,000xg for 5min.
2. Carefully open the tube and add 100ul of sterile water to dissolve the DNA.
3. Close the tube and incubate for 10 minutes at room temperature.
4. Briefly vortex the tube and then do a quick spin (less than 5000xg) to concentrate the liquid at the bottom.
5. Store the suspended plasmid at -20°C. The DNA is stable for at least one year from date of shipping when stored at -20°C.

**RefSeq:** [NM\\_032439.1](#), [NP\\_115815.1](#)

**RefSeq Size:** 3581 bp

**RefSeq ORF:** 1131 bp

**Locus ID:** 84457

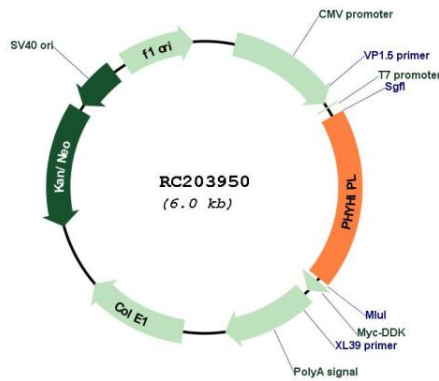
**UniProt ID:** [Q96FC7](#)

**Cytogenetics:** 10q21.1

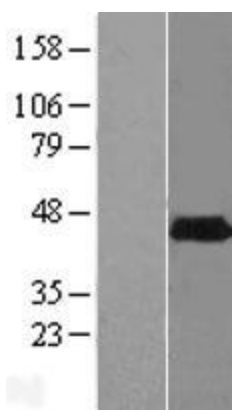
**MW:** 42.5 kDa

**Gene Summary:** May play a role in the development of the central system.[UniProtKB/Swiss-Prot Function]

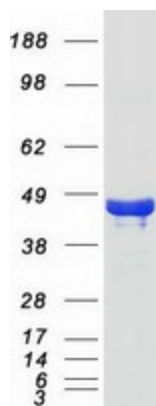
**Product images:**



Circular map for RC203950



Western blot validation of overexpression lysate (Cat# [LY410133]) using anti-DDK antibody (Cat# [TA50011-100]). Left: Cell lysates from untransfected HEK293T cells; Right: Cell lysates from HEK293T cells transfected with RC203950 using transfection reagent MegaTran 2.0 (Cat# [TT210002]).



Coomassie blue staining of purified PHYHIPL protein (Cat# [TP303950]). The protein was produced from HEK293T cells transfected with PHYHIPL cDNA clone (Cat# RC203950) using MegaTran 2.0 (Cat# [TT210002]).