

Product datasheet for **RC203948**

NEU4 (NM_080741) Human Tagged ORF Clone

Product data:

Product Type:	Expression Plasmids
Product Name:	NEU4 (NM_080741) Human Tagged ORF Clone
Tag:	Myc-DDK
Symbol:	NEU4
Mammalian Cell Selection:	Neomycin
Vector:	pCMV6-Entry (PS100001)
E. coli Selection:	Kanamycin (25 ug/mL)



[View online »](#)

ORF Nucleotide Sequence:

>RC203948 ORF sequence
 Red=Cloning site Blue=ORF Green=Tags(s)

TTTTGTAATACGACTCACTATAGGGCGGCCGGAATTCGTCGACTGGATCCGGTACCGAGGAGATCTGCC
 GCC**GCGATCGCC**

ATGATGAGCTCTGCAGCCTTCCAAGGTGGCTGAGCATGGGGTCCCTCGTACCCTTCACGGACAGTGC
 TCTTCGAGCGGGAGAGGACGGCCCTGACCTACCGCGTGCCTCGCTGCTCCCGTGCCTCCCGGGCCAC
 CCTGCTGGCCTTTGTGGAGCAGCGGCTCAGCCCTGACGACTCCCACGCCACCGCTGGTCTGAGGAGG
 GGCACGCTGGCCGGGGCTCCGTGCGGTGGGTGCCCTGCACGTCTGGGACAGCAGCCCTGGCGGAGC
 ACCGGTCCATGAACCCCTGCCCTGTGCACGATGCTGGCACGGCACCGTCTTCTCTTTCATCGCGGT
 GCTGGGCCACACGCTGAGGCCGTGCAGATCGCCACGGGAAGGAACGCCGCGCCTCTGCTGTGTGGCC
 AGCGGTGACGCCGCCTCTCGTGGGCAGCGCCCGGACCTACCGAGGAGGCCATCGTGGTGGCGTGC
 AGGACTGGGCCACATTTCGTGTGGTCCCGGCCACGGCGTGCAGTGCCTCAGGCCGCTGCTGGTACC
 CGCTACACCTACCGGTGACCGCCGAGAGTGTGGCAAGATCTGCCGACAGCCCTCACTCTTC
 GCCTTCTACAGCGATGACCACGGCCGACCTGGCGCTGTGGAGGCTCGTGCCCAACCTGCGCTCAGGCG
 AGTGCCAGCTGGCGCGGTGGACGGTGGCAGGCCGCGAGCTTCTCTACTGCAATGCCCGAGCCCACT
 GGGCAGCCGTGTGCAGGCGCTCAGCACTGACGAGGGCACCTCTTCTGCCCCGAGAGCGCGTGGCTTCC
 CTGCCCCGAGACTGCCTGGGGTGCAGGGCAGCATCGTGGGCTTCCAGCCCCGCCCCAACAGGCCAC
 GGGATGACAGTTGGTCACTGGGCCCCGGAGTCCCCTCCAGCCTCCACTCCTCGGTCTGGAGTCCACGA
 ACCCCCAGAGGAGGCTGCTGTAGACCCCGTGGAGGCCAGGTGCCTGGTGGGCCCTCAGCCGTCTGCAG
 CCTCGGGGGATGGCCCCAGGCAGCCTGGCCCCAGGCCGTTGGGTGAGTGGGGATGTGGGTCTGGACCC
 TGGCACTCCCCATGCCCTTTGCTGCCCGCCCCAGAGCCCCACGTGGCTGCTGTACTCCACCCAGTGGG
 GCGCAGGGCTCGCTACACATGGGTATCCGCCTGAGCCAGTCCCCGCTGGACCCGCGCAGCTGGACAGAG
 CCCTGGGTGATCTACGAGGGCCCCAGCGCTACTCCGACCTGGCGTCCATCGGGCCGCTCCTGAGGGGG
 GCCTGGTTTTTGCCTGCCTGTACGAGAGCGGGCCAGGACCTCCTATGATGAGATTTCTTTTGTACATT
 CTCCTGCGTGAGGTCTGGAGAAGTGCCTGCCCGCCAGCCCCAAGCCGCCAACCTTGGGGACAAGCTCG
 GGGTGTCTGCTGGCCCTCC

ACGCGTACGCGGCCGCTCGAGCAGAACTCATCTCAGAAGAGGATCTGGCAGCAAATGATATCTGGATT
 ACAAGGATGACGACGATAAGGTTTAA

Protein Sequence:

>RC203948 protein sequence
 Red=Cloning site Green=Tags(s)

MMSSAAFPRWLSMGVPRTPSRTVLFERERTGLTYRVPSLLPVPPGPTLLAFVEQRLSPDDSHAHRLVLR
 GTLAGGSVRWALHVLGTAALAEHRSMNCPVHDAGTGTVFLFFIAVLGHTPEAVQIATGRNAARLCCVA
 SRDAGLSWGSARDLTEEAI GGAVQDWATFAVGP GHGVQLPSGRLLVPAYTYRVDRECFGKICRTSPHSF
 AFYSDDHGRTWRCGLV PNLRS GECQLAAVDGGQAGSFLYCNARSPLGSRVQALSTDEGTSFLPAERVA
 LPETA WGCQGSIVGF P APAPNRPRDSSVSGPSPLQPPLLGPVHEPPEAAVDP RGGQVPGGPF SRLQ
 PRGDGPRQPGRPGVSGDVGSWTLALPMPFAAPPQSPTWLLYSHPVGRRARLHMGIRLSQSPLDPRSWTE
 PWVIYEGPSGYSDLASIGPAPEGGLVFACLYESGARTSYDEISFCTFSLREVLENVPASPKNLGDKPR
 GCCWPS

TRTRPLEQKLI SEEDLAANDILDYKDDDDKV

Chromatograms:

https://cdn.origene.com/chromatograms/mk6232_c10.zip

Restriction Sites:

SgfI-MluI

Cloning Scheme:


ACCN: NM_080741

ORF Size: 1488 bp

OTI Disclaimer: The molecular sequence of this clone aligns with the gene accession number as a point of reference only. However, individual transcript sequences of the same gene can differ through naturally occurring variations (e.g. polymorphisms), each with its own valid existence. This clone is substantially in agreement with the reference, but a complete review of all prevailing variants is recommended prior to use. [More info](#)

OTI Annotation: This clone was engineered to express the complete ORF with an expression tag. Expression varies depending on the nature of the gene.

Components: The ORF clone is ion-exchange column purified and shipped in a 2D barcoded Matrix tube containing 10ug of transfection-ready, dried plasmid DNA (reconstitute with 100 ul of water).

Reconstitution Method:

1. Centrifuge at 5,000xg for 5min.
2. Carefully open the tube and add 100ul of sterile water to dissolve the DNA.
3. Close the tube and incubate for 10 minutes at room temperature.
4. Briefly vortex the tube and then do a quick spin (less than 5000xg) to concentrate the liquid at the bottom.
5. Store the suspended plasmid at -20°C. The DNA is stable for at least one year from date of shipping when stored at -20°C.

RefSeq: [NM_080741.2](#)

RefSeq Size: 2373 bp

RefSeq ORF: 1491 bp

Locus ID: 129807

UniProt ID: [Q8WWR8](#)

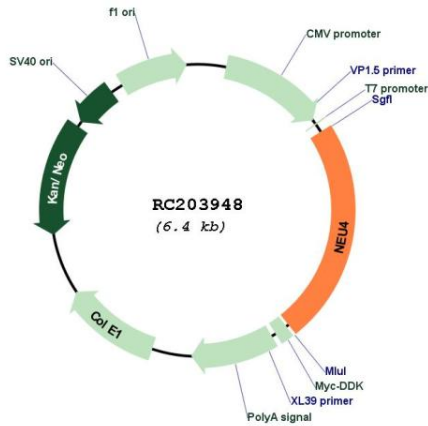
Cytogenetics: 2q37.3

Protein Pathways: Other glycan degradation, Sphingolipid metabolism

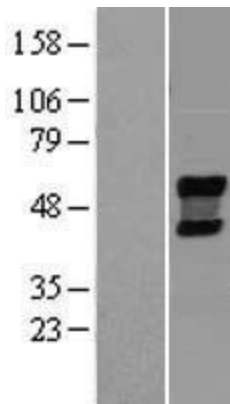
MW: 52.9 kDa

Gene Summary: The protein encoded by this gene belongs to a family of glycohydrolytic enzymes, which remove terminal sialic acid residues from various sialo derivatives, such as glycoproteins, glycolipids, oligosaccharides, and gangliosides. Alternatively spliced transcript variants encoding different isoforms have been noted for this gene. [provided by RefSeq, Nov 2009]

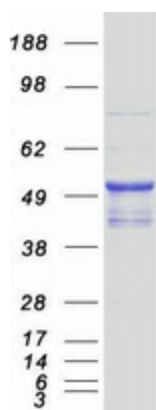
Product images:



Circular map for RC203948



Western blot validation of overexpression lysate (Cat# [LY409058]) using anti-DDK antibody (Cat# [TA50011-100]). Left: Cell lysates from untransfected HEK293T cells; Right: Cell lysates from HEK293T cells transfected with RC203948 using transfection reagent MegaTran 2.0 (Cat# [TT210002]).



Coomassie blue staining of purified NEU4 protein (Cat# [TP303948]). The protein was produced from HEK293T cells transfected with NEU4 cDNA clone (Cat# RC203948) using MegaTran 2.0 (Cat# [TT210002]).