

Product datasheet for **RC203947**

RNF86 (TRIM2) (NM_015271) Human Tagged ORF Clone

Product data:

Product Type:	Expression Plasmids
Product Name:	RNF86 (TRIM2) (NM_015271) Human Tagged ORF Clone
Tag:	Myc-DDK
Symbol:	RNF86
Synonyms:	CMT2R; RNF86
Mammalian Cell Selection:	Neomycin
Vector:	pCMV6-Entry (PS100001)
E. coli Selection:	Kanamycin (25 ug/mL)



[View online »](#)

ORF Nucleotide Sequence:

>RC203947 representing NM_015271
 Red=Cloning site Blue=ORF Green=Tags(s)

TTTTGTAATACGACTCACTATAGGGCGGCCGGAATTCGTCGACTGGATCCGGTACCGAGGAGATCTGCC
 GCC**CGCATCGCC**

ATGCCAGTGAAGGCACCAACATCCCAAGTCTGTGGTGCAGATTGACAAGCAGTTTCTGATTGCA
 GTATATGCCTGGAACGGTACAAGAATCCCAAGTTCTCCCTGTCTGCACACTTTCTGCGAGAGGTGCCT
 GCAGAACTACATTCTGCCACAGTTTAAACCTCTCTGCCAGTGTGCCGACAGACCTCCATCCTGCC
 GAGAAAGGGTGGCCGCTCCAGAACAATTTCTCATACAAACCTGATGGACGTGCTGCAGCGAACTC
 CAGGCAGCAACGCTGAGGAGTCTCCATCCTGGAGACAGTCACTGCTGTGGCTGCGGAAAGCCTCTCTC
 TTGCCAAACCACGATGGGAATGTGATGGAATTTACTGCCAGTCTGTGAGACTGCCATGTGTCGGGAG
 TGCACGGAGGGGAGCACGCAGAGCACCCACAGTCCACTCAAGGATGTGGTGAACAGCACAAAGCCT
 CGCTCCAGGTCCAGCTGGATGCTGTCAACAAAAGGCTCCAGAAATAGATTCTGCTCTTCAGTTCATCTC
 TGAATCATTATCAGTTAACCAACAAAAGGCCAGCATCGTGGATGACATTCATTCCACCTTTGATGAG
 CTCCAGAAGACTTTAAATGTGCGCAAGAGTGTGCTGCTTATGGAATTGGAGGTCAACTATGGCCTCAAAC
 ACAAAGTCTCCAGTCGACGCTGGATACTGCTCCAGGGGACAGGAGCATTAAAGAGTGCAGCAACTT
 CACAGCGCAGGCCCTCAACCATGGCAGCGGAGCCGAGTCCACTGGTGAAGAAGCAGATGAGCGAGAAG
 CTGAACGAGTGGCCGACCAGGACTTCCCTTGCACCCGCGGAGAACGACCAGCTGGATTTTCATCGTGG
 AAACCGAGGGGCTGAAGAAGTCCATCCACAACCTCGGGACGATCTTAACCACCAACGCCGTTGCCTCAGA
 GACAGTGGCCACGGGCGAGGGGCTGCGGCAGACCATCATCGGGCAGCCATGTCCGTACCATCACCACC
 AAGGACAAAGACGGTGAAGTGTGCAAAAACCGCAACGCCTACCTACCCGCGAAGTGCAGCAGGAGGAG
 GGAGCGTGGCAGACGGGAGATCTGGACAACAAGAAGCGCACCTATGAGTTTTTTGATACATGTCCAGAA
 GGAAGGGGACTTTACCCTGTCTCTGAGACTCTATGACCAGCACATCCGAGGACGCCGTTTAAAGTGAAA
 GTGATCCGATCCGCTGATGTGCTCCACCACAGAAGGCGTGAAGAGGCGGTTAAGTCCCCGGGAGCG
 GCCACGTCAAGCAGAAAGCTGTGAAAAGACCCGAAGCATGTACAGCACTGGAAAACGAAAAGAGAATCC
 CATCGAAGACGATTTGATCTTTGAGTGGTACCAAAGGAAGAAATAAAGGAGAGTTTACAAATCTTCAG
 GGGTAGTGCATCTACAAATGGAAGATATTAATTGCAGACAGTAACAACCAATGTGTGCAGATATTTT
 CCAATGATGGCCAGTTCAAAGTCGTTTTGGCATAACGGGACGCTCTCCGGGACGCTGCAGCGGCCAC
 AGGAGTGGCTGTACATCCAGTGGGACATAATCATTGCCGATTATGATAATAAATGGGTCAGCATTTTC
 TCCTCCGATGGGAAATTTAAGACAAAAATGGATCAGGAAAGCTGATGGGACCCAAAGGAGTTTCTGTGG
 ACCGCAATGGGCACATTATTGTTGTGGACAACAAGGCGTGTGCGTGTATCTTCCAGCCAAACGGGAA
 AATAGTACCAGTTTGGTAGCCGAGGAAATGGGACAGGCGATTTGCAGGTCCCATTTTGCAGCTGTA
 AATAGCAATAATGAGATTATTATACAGATTTCCATAATCATTCTGTCAAGGTGTTAATCAGGAAGGAG
 AATTATGTTGAAGTTTGGCTCAATGGAGAAGGAAATGGGCAGTTTAAATGCTCCAACAGGTGTAGCAGT
 GGATTCAAATGGAACATCATTGTGGCCGACTGGGAAACAGCAGGATCCAGGTTTTTGTGGGAGTGGA
 TCATTTTTGTCTACATTAACACATCTGCTGACCCACTCTATGGCCCCAAGGCTGGCCCTAACCTCAG
 ATGGTCATGTTGTGGTTGCAGACTCTGGAATCACTGTTTCAAAGTCTATCGATACTTACAG

ACGCGTACGCGGCCGCTCGAGCAGAACTCATCTCAGAAGAGGATCTGGCAGCAAATGATATCCTGGATT
 ACAAGGATGACGACGATAAGGTTTAA

Protein Sequence: >RC203947 representing NM_015271
 Red=Cloning site Green=Tags(s)

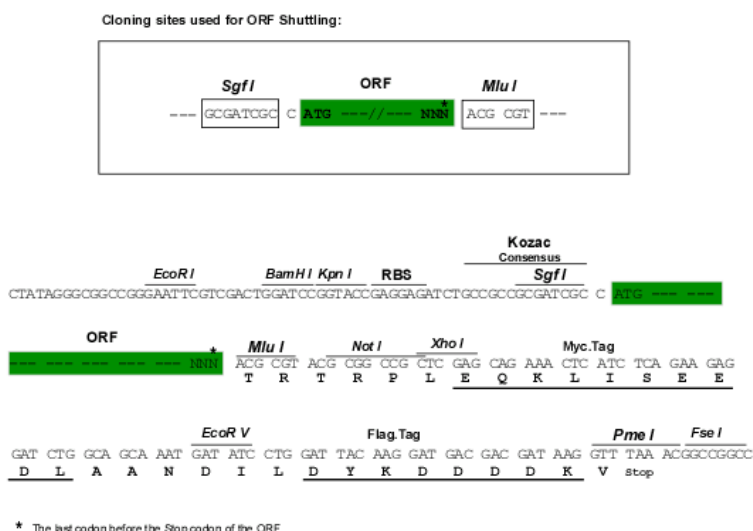
MASEG TNIPSPVVRQIDKQFLICSI CLERYKNPKVLPCLHTFCERCLQNYIPAHSLT LSCPVCRQTSILP
 EKGVAALQNNFFITNLM DVLQRTPGSNAE ESILETVTAVAAGKPLSCP NHDGNVMEFYCQSCETAMCRE
 CTEGEHAEHPTVPLKDVVEQH KASLQVQLDAVNKRLPEIDSALQFISEI IHQLTNQKASIVDDIHSFDE
 LQKTLNVRKSVLLMELEVNYGLKHKVLQS QLDLTLQGQESIKSCSNFTAQALNHGTETEVLLVKKQMSEK
 LNELADQDFPLHPRENDQLDFIVET EGLKKS IHNLGTILTTNAVASETVATGEGLRQTIIIGQPM SVTITT
 KDKDGELCKTG NAYLTAELSTPDG SVADGEILDNKNGTYEFLYTVQKEGDFTL SLRLYDQHIRGSPFKLK
 VIRSADVSP TTEGVKRRVKSPGSGHV KQKAVKRPASMYSTGKRKENPIEDDLIFRVGTGKRNGEFTNLQ
 GVAASTNGKIL IADSNNQCVQIFSN DGQFKSRFGIRGRSPGQLQRPTGVAVHPSGDII IADYDNKWSIF
 SSDGKFKTKIGSGKLMGPKGVSVDRNGHIIVVDNKACCVFIFQPNGKIVTRFGSRGNGDRQFAGPHFAAV
 NSNNEIIITDFHNH SVKVFNQEGE FMLKFGSNGEGNGQFNAPTGVAVDSNGNIIIVADWGN SRIQVFDGSG
 SFLSYINTSADPLYGPQLAL TSDGHVVVADSGNHCFK VYRYLQ

TRTRPLEQKLI SEEDLAANDILDYK DDDDKV

Restriction Sites:

Sgfl-MluI

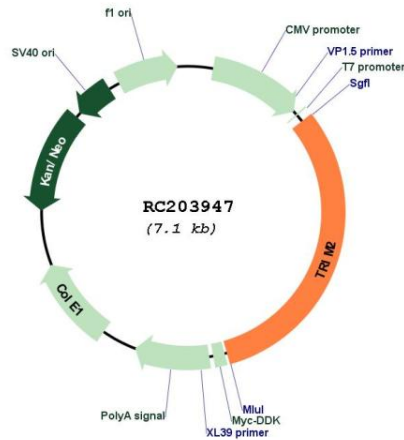
Cloning Scheme:



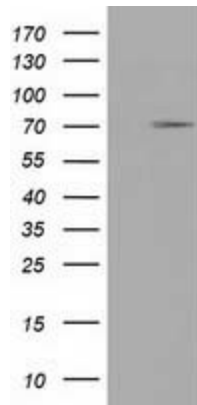
ACCN: NM_015271

ORF Size: 2232 bp

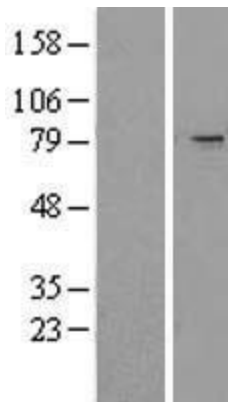
OTI Disclaimer:	<p>Due to the inherent nature of this plasmid, standard methods to replicate additional amounts of DNA in E. coli are highly likely to result in mutations and/or rearrangements. Therefore, OriGene does not guarantee the capability to replicate this plasmid DNA. Additional amounts of DNA can be purchased from OriGene with batch-specific, full-sequence verification at a reduced cost. Please contact our customer care team at custsupport@origene.com or by calling 301.340.3188 option 3 for pricing and delivery.</p> <p>The molecular sequence of this clone aligns with the gene accession number as a point of reference only. However, individual transcript sequences of the same gene can differ through naturally occurring variations (e.g. polymorphisms), each with its own valid existence. This clone is substantially in agreement with the reference, but a complete review of all prevailing variants is recommended prior to use. More info</p>
OTI Annotation:	<p>This clone was engineered to express the complete ORF with an expression tag. Expression varies depending on the nature of the gene.</p>
Components:	<p>The ORF clone is ion-exchange column purified and shipped in a 2D barcoded Matrix tube containing 10ug of transfection-ready, dried plasmid DNA (reconstitute with 100 ul of water).</p>
Reconstitution Method:	<ol style="list-style-type: none">1. Centrifuge at 5,000xg for 5min.2. Carefully open the tube and add 100ul of sterile water to dissolve the DNA.3. Close the tube and incubate for 10 minutes at room temperature.4. Briefly vortex the tube and then do a quick spin (less than 5000xg) to concentrate the liquid at the bottom.5. Store the suspended plasmid at -20°C. The DNA is stable for at least one year from date of shipping when stored at -20°C.
Note:	<p>Plasmids are not sterile. For experiments where strict sterility is required, filtration with 0.22um filter is required.</p>
RefSeq:	<p>NM_015271.2, NP_056086.1</p>
RefSeq Size:	<p>6734 bp</p>
RefSeq ORF:	<p>2316 bp</p>
Locus ID:	<p>23321</p>
UniProt ID:	<p>Q9C040</p>
Cytogenetics:	<p>4q31.3</p>
Domains:	<p>zf-B_box, NHL, Filamin, RING, BBC</p>
MW:	<p>81.3 kDa</p>
Gene Summary:	<p>The protein encoded by this gene is a member of the tripartite motif (TRIM) family. The TRIM motif includes three zinc-binding domains, a RING, a B-box type 1 and a B-box type 2, and a coiled-coil region. The protein localizes to cytoplasmic filaments. It plays a neuroprotective role and functions as an E3-ubiquitin ligase in proteasome-mediated degradation of target proteins. Mutations in this gene can cause early-onset axonal neuropathy. Alternative splicing results in multiple transcript variants. [provided by RefSeq, Nov 2014]</p>

Product images:


Circular map for RC203947



HEK293T cells were transfected with the pCMV6-ENTRY control (Cat# [PS100001], Left lane) or pCMV6-ENTRY TRIM2 (Cat# RC203947, Right lane) cDNA for 48 hrs and lysed. Equivalent amounts of cell lysates (5 ug per lane) were separated by SDS-PAGE and immunoblotted with anti-TRIM2 (Cat# [TA501551]). Positive lysates [LY414662] (100ug) and [LC414662] (20ug) can be purchased separately from OriGene.



Western blot validation of overexpression lysate (Cat# [LY427142]) using anti-DDK antibody (Cat# [TA50011-100]). Left: Cell lysates from untransfected HEK293T cells; Right: Cell lysates from HEK293T cells transfected with [RC226128] using transfection reagent MegaTran 2.0 (Cat# [TT210002]).