

Product datasheet for RC203942

NCE2 (UBE2F) (NM_080678) Human Tagged ORF Clone

Product data:

Product Type: Expression Plasmids
Product Name: NCE2 (UBE2F) (NM_080678) Human Tagged ORF Clone
Tag: Myc-DDK
Symbol: NCE2
Synonyms: NCE2
Mammalian Cell Selection: Neomycin
Vector: pCMV6-Entry (PS100001)
E. coli Selection: Kanamycin (25 ug/mL)
ORF Nucleotide Sequence: >RC203942 representing NM_080678
 Red=Cloning site Blue=ORF Green=Tags(s)

TTTTGTAATACGACTCACTATAGGGCGGCCGGAATTCGTCGACTGGATCCGGTACCGAGGAGATCTGCC
 GCC**CGATCGCC**

ATGCTAACGCTAGCAAGTAACTGAAGCGTGACGATGGTCTCAAAGGGTCCCGACGGCAGCCACAGCGT
 CCGACTCGACTCGGAGGGTTTCTGTGAGAGACAAATTGCTTGTAAAGAGGTTGCAGAACTTGAAGCTAA
 TTTACCTGTACATGTAAAGTGCATTTTCCTGATCCAAACAAGCTTCATTGTTTTAGCTAACAGTAACC
 CCAGATGAGGGTTACTACCAGGGTGAAAATTTAGTTTGAAGTGAAGTCCCGATGCGTACAACATGG
 TGCTCCCAAAGTAAAATGCCTGACCAAGATCTGGCACCCCAACATCACAGAGACAGGGGAAATATGTCT
 GAGTTTATTGAGAGAACATTCAATTGATGGCACTGGCTGGCTCCACAAGAACATTAAAGGATGTCGTT
 TGGGGATTAAGTCTTTGTTTACTGATCTTTGAAATTTGATGATCCACTGAATATTGAAGCTGCAGAAC
 ATCATTTCGGGACAAGGAGGACTTCCGGAATAAAGTGGATGACTACATCAAACGTTATGCCAGA

ACGCGTACGCGGCCGCTCGAGCAGAACTCATCTCAGAAGAGGATCTGGCAGCAAATGATATCCTGGATT
 ACAAGGATGACGACGATAAGGTTTAA

Protein Sequence: >RC203942 representing NM_080678
 Red=Cloning site Green=Tags(s)

MLTLASKLKRDDGLKGSRTAATASDSTRVSVRDKLLVKEVALEANLPCTCKVHFDPNKLHCFQLTVT
 PDEGYYQGGKQFETEVDPAYNMVPPKVKCLTKIWHPNITETGEICLSLLREHSIDGTGWAPTRTLKDVV
 WGLNSLFTDLLNFDPLNIEAAEHHLRDKEDFRNKVDDYIKRYAR

TRTRPLEQKLISEEDLAANDILDYKDDDDKV

Chromatograms: https://cdn.origene.com/chromatograms/mg2875_a06.zip



[View online »](#)

Restriction Sites: SgfI-MluI

Cloning Scheme:



ACCN: NM_080678

ORF Size: 555 bp

OTI Disclaimer: The molecular sequence of this clone aligns with the gene accession number as a point of reference only. However, individual transcript sequences of the same gene can differ through naturally occurring variations (e.g. polymorphisms), each with its own valid existence. This clone is substantially in agreement with the reference, but a complete review of all prevailing variants is recommended prior to use. [More info](#)

OTI Annotation: This clone was engineered to express the complete ORF with an expression tag. Expression varies depending on the nature of the gene.

Components: The ORF clone is ion-exchange column purified and shipped in a 2D barcoded Matrix tube containing 10ug of transfection-ready, dried plasmid DNA (reconstitute with 100 ul of water).

Reconstitution Method: 1. Centrifuge at 5,000xg for 5min.
2. Carefully open the tube and add 100ul of sterile water to dissolve the DNA.
3. Close the tube and incubate for 10 minutes at room temperature.
4. Briefly vortex the tube and then do a quick spin (less than 5000xg) to concentrate the liquid at the bottom.
5. Store the suspended plasmid at -20°C. The DNA is stable for at least one year from date of shipping when stored at -20°C.

RefSeq: [NM_080678.3](#)

RefSeq Size: 1366 bp

RefSeq ORF: 558 bp

Locus ID: 140739

UniProt ID: [Q969M7](#)

Cytogenetics: 2q37.3

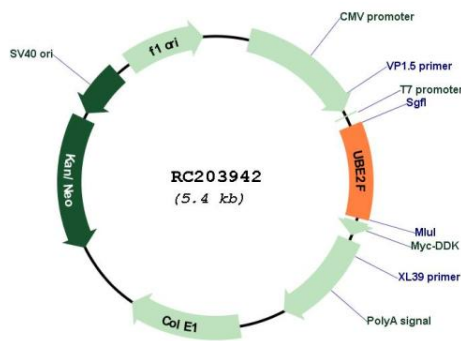
Domains: UBCc

Protein Pathways: Ubiquitin mediated proteolysis

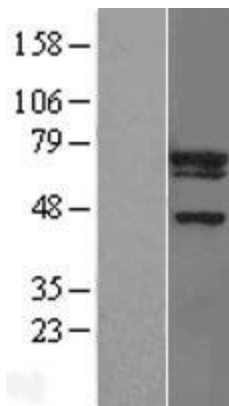
MW: 20.9 kDa

Gene Summary: Accepts the ubiquitin-like protein NEDD8 from the UBA3-NAE1 E1 complex and catalyzes its covalent attachment to other proteins. The specific interaction with the E3 ubiquitin ligase RBX2, but not RBX1, suggests that the RBX2-UBE2F complex neddylates specific target proteins, such as CUL5.[UniProtKB/Swiss-Prot Function]

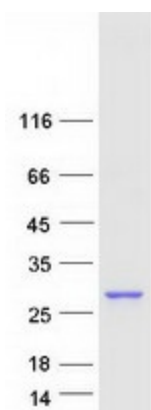
Product images:



Circular map for RC203942



Western blot validation of overexpression lysate (Cat# [LY409102]) using anti-DDK antibody (Cat# [TA50011-100]). Left: Cell lysates from untransfected HEK293T cells; Right: Cell lysates from HEK293T cells transfected with RC203942 using transfection reagent MegaTran 2.0 (Cat# [TT210002]).



Coomassie blue staining of purified UBE2F protein (Cat# [TP303942]). The protein was produced from HEK293T cells transfected with UBE2F cDNA clone (Cat# RC203942) using MegaTran 2.0 (Cat# [TT210002]).