

## Product datasheet for **RC203941**

### Clusterin (CLU) (NM\_203339) Human Tagged ORF Clone

#### Product data:

Product Type:	Expression Plasmids
Product Name:	Clusterin (CLU) (NM_203339) Human Tagged ORF Clone
Tag:	Myc-DDK
Symbol:	Clusterin
Synonyms:	AAG4; APOJ; CLI; KUB1; MGC24903; SGP-2; SGP2; SP-40; TRPM-2; TRPM2
Mammalian Cell Selection:	Neomycin
Vector:	pCMV6-Entry (PS100001)
E. coli Selection:	Kanamycin (25 ug/mL)



[View online »](#)

**ORF Nucleotide Sequence:**

>RC203941 ORF sequence  
 Red=Cloning site Blue=ORF Green=Tags(s)

TTTTGTAATACGACTCACTATAGGGCGGCCGGGAATTCGTCGACTGGATCCGGTACCGAGGAGATCTGCC  
 GCC**CGGATCGCC**

ATGATGAAGACTCTGCTGCTGTTTGTGGGGCTGCTGCTGACCTGGGAGAGTGGGCAGTCTGGGGACC  
 AGACGGTCTCAGACAATGAGCTCCAGGAAATGTCCAATCAGGGAAGTAAGTACGTCAATAAGGAAATTC  
 AAATGCTGTCAACGGGGTGAACAGATAAAGACTCTCATAGAAAAACAACGAAGAGCGCAAGACTG  
 CTCAGCAACCTAGAAGAAGCCAAGAAGAAGAAAGAGGATGCCCTAAATGAGACCAGGGAATCAGAGACAA  
 AGCTGAAGGAGCTCCAGGAGTGTGCAATGAGACCATGATGGCCCTCTGGGAAGAGTGAAGCCCTGCC  
 GAAACAGACCTGCATGAAGTTCTACGCACGCTGTGCAGAAGTGGCTCAGGCCTGGTTGGCCGCCAGCT  
 GAGGAGTCTCTGAACCAGAGCTCGCCCTTCTACTTCTGGATGAATGGTGACCGCATCGACTCCCTGCTGG  
 AGAACGACCGGCAGCAGACGCACATGCTGGATGTCATGCAGGACCACTTCAGCCGCGCTCCAGCATCAT  
 AGACGAGCTCTCCAGGACAGGTTCTTCCACCGGAGCCCAAGGATACCTACCACTACCTGCCCTTCTCAGC  
 CTGCCACCGGAGGCCCTCACTTCTTCTTCCCAAGTCCCGCATCGTCCGAGCTTGATGCCCTTCTCTC  
 CGTACGAGCCCTGAACTTCCACGCCATGTTCCAGCCCTTCTTGAGATGATACACGAGGCTCAGCAGGC  
 CATGGACATCCACTTCCACAGCCCGCCCTTCCAGCACCCGCCAACAGAATTCATACGAGAAGGCGCAGAT  
 GACCGGACTGTGTGCCGGGAGATCCGCCACAATCCACGGGCTGCCTGCGGATGAAGGACCAGTGTGACA  
 AGTGCCGGGAGATCTTGTCTGTGGACTGTTCCACCAACAACCCCTCCAGGCTAAGCTGCGGCGGGAGCT  
 CGACGAATCCCTCCAGGTCGCTGAGAGGTTGACCAGGAAATAACAGAGCTGCTAAAGTCTACCACTGG  
 AAGATGCTCAACACCTCCTCCTTGTCTGGAGCAGCTGAACGAGCAGTAACTGGGTGTCGCGGCTGGCAA  
 ACCTCACGAAGGCGAAGACCACTACTATCTGCGGGTCAACCGTGGCTTCCACACTCTGACTGCGGA  
 CGTTCCTCCGGTGTCACTGAGGTGGTCTGAAGCTCTTTGACTCTGATCCCATCACTGTGACGGTCCCT  
 GTAGAAGTCTCCAGGAAGAACCCTAAATTTATGGAGACCGTGGCGGAGAAAGCGCTGCAGGAATACCGCA  
 AAAAGCACCGGGAGGAG

AG**CGGACCG**ACGCGTACGCGGCCGCTCGAGCAGAACTCATCTCAGAAGAGGATCTGGCAGCAAATGATATCC  
 TGGATTACAAGGATGACGACGATAAGGTTTAA

**Protein Sequence:**

>RC203941 protein sequence  
 Red=Cloning site Green=Tags(s)

MMKTL L L L FVGL L L TWESGQVLGDQTVSDNELQEMSNQGSKYVNKEIQNAVNGVKQIKTLIEKTNEERKTL  
 LSNLEEAKKKKEDALNETRESETKLKE L PGVCNETMMALWEECKPCLKQTCMKFYARVCRSGSGLVGRQL  
 EEFLNQSSPFYFWMNGDRIDSLLENDRQQTHMLDVMQDHF SRASSIIDELFQDRFF TREPQD TYHYLPFS  
 LPHRRPHFFFPKSRIVRSLMPFSPYEPLNFHAMFQPFL EMIHEAQQAMD IHFHSPAFQHPPT E F IREGDD  
 DRTVCREIRHNSTGCLR MKDQCDKREILSVDCSTNNPSQAKLRRELDESLQVAERL TRKYNELLKSYQW  
 KMLNTSSLLEQLNEQFNWVSR LANLTQGEDQY YLRVTTVASHTSDSDVPSGVTEVVVKLFSDPITVTV P  
 VEVSRKNPKFMETVAEKALQEYRKKHREE

SGP**TRTRPLEQKLI SEEDLAANDILDYKDDDDKV**

**Chromatograms:**

[https://cdn.origene.com/chromatograms/mk6222\\_a03.zip](https://cdn.origene.com/chromatograms/mk6222_a03.zip)

**Restriction Sites:**

Sgfl-RsrII

**Cloning Scheme:**


**ACCN:** NM\_203339

**ORF Size:** 1347 bp

**OTI Disclaimer:** The molecular sequence of this clone aligns with the gene accession number as a point of reference only. However, individual transcript sequences of the same gene can differ through naturally occurring variations (e.g. polymorphisms), each with its own valid existence. This clone is substantially in agreement with the reference, but a complete review of all prevailing variants is recommended prior to use. [More info](#)

**OTI Annotation:** This clone was engineered to express the complete ORF with an expression tag. Expression varies depending on the nature of the gene.

**Components:** The ORF clone is ion-exchange column purified and shipped in a 2D barcoded Matrix tube containing 10ug of transfection-ready, dried plasmid DNA (reconstitute with 100 ul of water).

**Reconstitution Method:**

1. Centrifuge at 5,000xg for 5min.
2. Carefully open the tube and add 100ul of sterile water to dissolve the DNA.
3. Close the tube and incubate for 10 minutes at room temperature.
4. Briefly vortex the tube and then do a quick spin (less than 5000xg) to concentrate the liquid at the bottom.
5. Store the suspended plasmid at -20°C. The DNA is stable for at least one year from date of shipping when stored at -20°C.

**RefSeq:** [NM\\_203339.1](#), [NP\\_976084.1](#)

**RefSeq Size:** 3012 bp

**RefSeq ORF:** 1349 bp

**Locus ID:** 1191

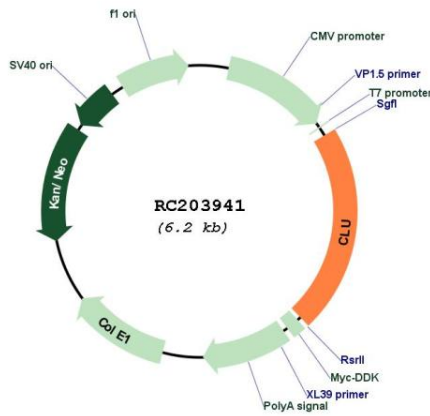
**Cytogenetics:** 8p21.1

**Protein Families:** Druggable Genome, Secreted Protein

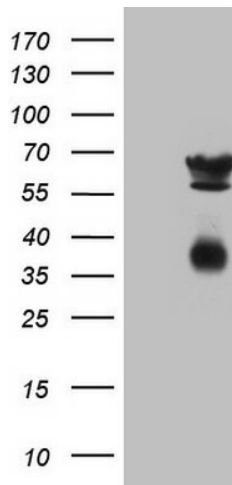
**MW:** 52.5 kDa

**Gene Summary:** The protein encoded by this gene is a secreted chaperone that can under some stress conditions also be found in the cell cytosol. It has been suggested to be involved in several basic biological events such as cell death, tumor progression, and neurodegenerative disorders. Alternate splicing results in both coding and non-coding variants.[provided by RefSeq, May 2011]

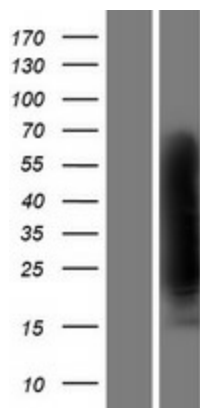
**Product images:**



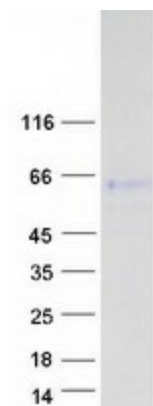
Circular map for RC203941



HEK293T cells were transfected with the pCMV6-ENTRY control (Cat# [PS100001], Left lane) or pCMV6-ENTRY CLU (Cat# RC203941, Right lane) cDNA for 48 hrs and lysed. Equivalent amounts of cell lysates (5 ug per lane) were separated by SDS-PAGE and immunoblotted with anti-CLU (Cat# [TA808665])(1:2000). Positive lysates [LY404400] (100ug) and [LC404400] (20ug) can be purchased separately from OriGene.



Western blot validation of overexpression lysate (Cat# [LY404400]) using anti-DDK antibody (Cat# [TA50011-100]). Left: Cell lysates from untransfected HEK293T cells; Right: Cell lysates from HEK293T cells transfected with RC203941 using transfection reagent MegaTran 2.0 (Cat# [TT210002]).



Coomassie blue staining of purified CLU protein (Cat# [TP303941]). The protein was produced from HEK293T cells transfected with CLU cDNA clone (Cat# RC203941) using MegaTran 2.0 (Cat# [TT210002]).