

Product datasheet for RC203938

LITAF (NM_004862) Human Tagged ORF Clone

Product data:

Product Type: Expression Plasmids
Product Name: LITAF (NM_004862) Human Tagged ORF Clone
Tag: Myc-DDK
Symbol: LITAF
Synonyms: PIG7; SIMPLE; TP53I7
Mammalian Cell Selection: Neomycin
Vector: pCMV6-Entry (PS100001)
E. coli Selection: Kanamycin (25 ug/mL)
ORF Nucleotide Sequence: >RC203938 ORF sequence
 Red=Cloning site Blue=ORF Green=Tags(s)

TTTTGTAATACGACTCACTATAGGGCGGCCGGAATTCGTCGACTGGATCCGGTACCGAGGAGATCTGCC
 GCC**CGATCGCC**

ATGTCGGTTCCAGGACCTTACCAGGCGGCCACTGGGCCTTCTCAGCACCATCCGCACCTCCATCCTATG
 AAGAGACAGTGGCTGTTAACAGTTATTACCCACACCTCCAGCTCCCATGCCTGGGCCAACTACGGGGCT
 TGTGACGGGGCTGATGGGAAGGGCATGAATCCTCCTTCGTATTATACCCAGCCAGCGCCCATCCCCAAT
 AACAAATCAATTACCGTGCAGACGGTCTACGTGCAGACCCCATCACCTTTTTGGACCGCCATCCAAA
 TGTGTTGTCCTTCTGCAACAAGATGATCGTGAGTCAGCTGTCTATAACGCCGGTCTCTGACCTGGCT
 GTCTGCGGGAGCCTGTGCCTGCTGGGGTGCATAGCGGGCTGCTGCTTCATCCCCTTCTGCGTGGATGCC
 CTGCAGGACGTGGACCATTACTGTCCAACTGCAGAGCTCTCCTGGGCACCTACAAGCGTTTG

ACGCGTACGCGGCCGCTCGAGCAGAACTCATCTCAGAAGAGGATCTGGCAGCAAATGATATCCTGGATT
 ACAAGGATGACGACGATAAGGTTTAA

Protein Sequence: >RC203938 protein sequence
 Red=Cloning site Green=Tags(s)

MSVPGPYQAATGPSSAPSAPPSYEETVAVNSYYTPPAPMPGPTTGLVTPDGGKGMNPPSYTQPAPIPN
 NNPITVQTVYVQHPITFLDRPIQMCCPSCNKMIVSQLSYNAGALTWLSCGSLCLLGCAGCCFIPFCVDA
 LQDVDHYCPNCRALLGTYKRL

TRTRPLEQKLISEEDLAANDILDYKDDDDKV

Chromatograms: https://cdn.origene.com/chromatograms/mk6379_h09.zip



[View online >](#)

Restriction Sites: SgfI-MluI

Cloning Scheme:



ACCN: NM_004862

ORF Size: 483 bp

OTI Disclaimer: The molecular sequence of this clone aligns with the gene accession number as a point of reference only. However, individual transcript sequences of the same gene can differ through naturally occurring variations (e.g. polymorphisms), each with its own valid existence. This clone is substantially in agreement with the reference, but a complete review of all prevailing variants is recommended prior to use. [More info](#)

OTI Annotation: This clone was engineered to express the complete ORF with an expression tag. Expression varies depending on the nature of the gene.

Components: The ORF clone is ion-exchange column purified and shipped in a 2D barcoded Matrix tube containing 10ug of transfection-ready, dried plasmid DNA (reconstitute with 100 ul of water).

Reconstitution Method:

1. Centrifuge at 5,000xg for 5min.
2. Carefully open the tube and add 100ul of sterile water to dissolve the DNA.
3. Close the tube and incubate for 10 minutes at room temperature.
4. Briefly vortex the tube and then do a quick spin (less than 5000xg) to concentrate the liquid at the bottom.
5. Store the suspended plasmid at -20°C. The DNA is stable for at least one year from date of shipping when stored at -20°C.

RefSeq: [NM_004862.3](#)

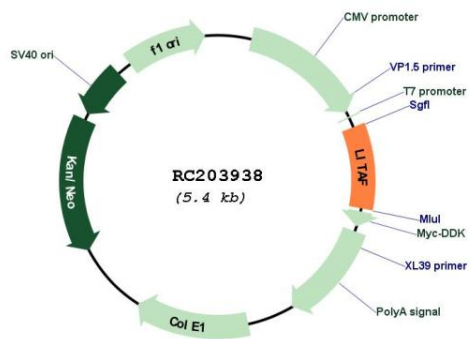
RefSeq Size: 2642 bp

RefSeq ORF: 486 bp

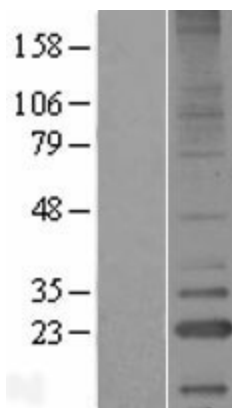
Locus ID: 9516

UniProt ID: [Q99732](#)
Cytogenetics: 16p13.13
Domains: LITAF
Protein Families: Druggable Genome, Transcription Factors
MW: 17.1 kDa
Gene Summary: Lipopolysaccharide is a potent stimulator of monocytes and macrophages, causing secretion of tumor necrosis factor-alpha (TNF-alpha) and other inflammatory mediators. This gene encodes lipopolysaccharide-induced TNF-alpha factor, which is a DNA-binding protein and can mediate the TNF-alpha expression by direct binding to the promoter region of the TNF-alpha gene. The transcription of this gene is induced by tumor suppressor p53 and has been implicated in the p53-induced apoptotic pathway. Mutations in this gene cause Charcot-Marie-Tooth disease type 1C (CMT1C) and may be involved in the carcinogenesis of extramammary Paget's disease (EMPD). Multiple alternatively spliced transcript variants have been found for this gene. [provided by RefSeq, Dec 2014]

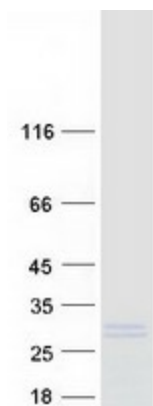
Product images:



Circular map for RC203938



Western blot validation of overexpression lysate (Cat# [LY427883]) using anti-DDK antibody (Cat# [TA50011-100]). Left: Cell lysates from untransfected HEK293T cells; Right: Cell lysates from HEK293T cells transfected with [RC226810] using transfection reagent MegaTran 2.0 (Cat# [TT210002]).



Coomassie blue staining of purified LITAF protein (Cat# [TP303938]). The protein was produced from HEK293T cells transfected with LITAF cDNA clone (Cat# RC203938) using MegaTran 2.0 (Cat# [TT210002]).