

Product datasheet for **RC203937**

CGBP (CXXC1) (NM_014593) Human Tagged ORF Clone

Product data:

Product Type:	Expression Plasmids
Product Name:	CGBP (CXXC1) (NM_014593) Human Tagged ORF Clone
Tag:	Myc-DDK
Symbol:	CGBP
Synonyms:	2410002I16Rik; 5830420C16Rik; CFP1; CGBP; hCGBP; HsT2645; PCCX1; PHF18; SPP1; ZCGPC1
Mammalian Cell Selection:	Neomycin
Vector:	pCMV6-Entry (PS100001)
E. coli Selection:	Kanamycin (25 ug/mL)



[View online »](#)

**ORF Nucleotide
Sequence:**

>RC203937 ORF sequence
 Red=Cloning site Blue=ORF Green=Tags(s)

TTTTGTAATACGACTCACTATAGGGCGGCCGGGAATTCGTCGACTGGATCCGGTACCGAGGAGATCTGCC
 GCC**CGGATCGCC**

ATGGAGGGAGATGGTTCAGACCCAGAGCCTCCAGATGCCGGGGAGGACAGCAAGTCCGAGAATGGGGAGA
 ATGCGCCCATCTACTGCATCTGCCGCAAACCGGACATCAACTGCTTCATGATCGGGTGTGACAACTGCAA
 TGAGTGGTTCCATGGGGACTGCATCCGGATCACTGAGAAGATGGCCAAGGCCATCCGGGAGTGGTACTGT
 CGGGAGTGCAGAGAGAAAGACCCCAAGCTAGAGATTTCGCTATCGGCACAAGAAGTACGGGAGCGGGATG
 GCAATGAGCGGGACAGCAGTGAAGCCCGGGATGAGGGTGGAGGGCGAAGAGGCCGTCCCTGATCCAGA
 CCTGCAGCGCCGGCAGGGTCAAGGACAGGGGTGGGGCCATGCTTGCTCGGGCTCTGCTTCGCCCCAC
 AAATCCTCTCCGAGCCCTTGGTGGCCACACCCAGCCAGCATCACCAGCAGCAGCAGCAGATCAAAC
 GGTGAGCCCGCATGTGTGGTGTGAGGCATGTCGGCGCACTGAGGACTGTGGTCACTGTGATTTCTG
 TCGGGACATGAAGAAGTTCGGGGCCCCAACAAGATCCGGCAGAAGTCCGGCTGCGCCAGTCCAGCTG
 CGGGCCCGGGAATCGTACAAGTACTTCCCTTCTCGCTCTCACCAGTGACGCCCTCAGAGTCCCTGCCAA
 GGCCCCGCGGCCACTGCCACCCAACAGCAGCCACAGCCATCACAGAAGTTAGGGCGCATCCGTGAAGA
 TGAGGGGGCAGTGGCGTCATCAACAGTCAAGGAGCCTCCTGAGGCTACAGCCACACCTGAGCCACTCTCA
 GATGAGGACCTACCTCTGGATCTGACCTGTATCAGGACTTCTGTGCAGGGGCCTTTGATGACCATGGCC
 TGCCCTGGATGAGCGACACAGAAGTCCCATTCCTGGACCCCGCGCTGCGGAAGAGGGCAGTGAAGT
 GAAGCATGTGAAGCGTCGGGAGAAGAAGTCTGAGAAGAAGAAGGAGGAGCGATACAAGCGGCATCGGCAG
 AAGCAGAAGCACAAAGATAAATGGAAACACCCAGAGAGGGCTGATGCCAAGGACCCTGCGTCACTGCCCC
 AGTCCCTGGGGCCCGCTGTGTGCGCCCGCCAGCCAGCTCCAAGTATTGCTCAGATGACTGTGGCAT
 GAAGCTGGCAGCCAACCGCATCTACGAGATCCTCCCCAGCGCATCCAGCAGTGGCAGCAGAGCCCTTGC
 ATTGCTGAAGAGCACGGCAAGAAGCTGCTCGAACGCATTTCGCGAGAGCAGCAGAGTGCCTGCACTCGCC
 TTCAGGAAATGGAACGCCGATTCCATGAGCTTGAGGCCATCATTCTACGTGCCAAGCAGCAGGCTGTGCG
 CGAGGATGAGGAGAGCAACGAGGGTACAGTGTGACACAGACCTGCAGATCTTCTGTGTTTCTGTGGG
 CACCCCATCAACCCACGTGTTGCCTTGCGCCACATGGAGCGTGTACGCCAAGTATGAGAGCCAGACGT
 CCTTTGGTCCATGTACCCACACGCATTGAAGGGGCCACACGACTCTTCTGTGATGTGTATAATCCTCA
 GAGCAAAACATACTGTAAGCGGCTCCAGGTGCTGTGCCCCGAGCACTCACGGGACCCCAAAGTGCAGCT
 GACGAGGTATGCGGGTGCCTTGTACGTGATGTCTTTGAGCTCACGGGTGACTTCTGCCGCTGCCCA
 AGCGCCAGTGAATCGCCATTACTGCTGGGAGAAGCTGCGGCGTGCAGGAGTGGACTTGGAGCGCGTGG
 TGTGTGGTACAAGCTGGACGAGCTGTTGAGCAGGAGCGCAATGTGCGCACAGCCATGACAAACCGCGG
 GGATTGCTGGCCCTGATGCTGCACCAGACGATCCAGCAGATCCCTCACTACCGACCTGCGCTCCAGTG
 CCGACCGC

ACGCGTACGCGGGCCGCTCGAGCAGAACTCATCTCAGAAGAGGATCTGGCAGCAAATGATATCCTGGATT
 ACAAGGATGACGACGATAAGGTTTAA

Protein Sequence: >RC203937 protein sequence
Red=Cloning site Green=Tags(s)

```
MEGDGSDPEPPDAGEDSKSENGENAPIYICIRKPDINCFMIGCDNCNEWFHGDCIRITEKMAKAIREWY
RECREKDPKLEIRYRHKKSRERDGNERDSSEPRDEGGGRKRPVDPDLQRRAGSGTGVGAMLARGSASP
KSSPQPLVATPSQHHQQQQQIKRSARMCGECEACRRTEDCGHCDFCRDMKKFGGPNKIRQKCLRQCQL
RARESYKYFPSSLSPVTPSESLPRPRRPLPTQQQPQSQKLGRIREDEGAVASSTVKEPPEATATPEPLS
DEDLPLDPLYQDFCAGAFDDHGLPWMSDTEESPFDPALRKRAVKVKHVKRREKSEKKKEERYKRHRQ
KQKHKDKWKHPERADAKDPASLPQCLGPGCVRPAQPSSKYCSDDCGMKLANRIYEILPQRIQQWQQSPC
IAEEHGKLLERIRREQQSARTRLQEMERRFHELEAIIILRAKQAVREDEESNEGSDDDLQIFCVSCG
HPINPRVALRHMERCYAKYESQTSFGSMYPTRIEGATRLFCDVYNPQSKTYCKRLQVLCPEHSRDPKVP
DEVCGCLVRDVFELTGDFCRLPKRQCNRHYCWEKLRRAEVDLERVVRVYKLDLDELFEQERNVRTAMNRA
GLLLALMLHQTIQHDPLTTDLRSSADR
```

TRTRPLEQKLISEEDLAANDILDYKDDDDKV

Chromatograms: https://cdn.origene.com/chromatograms/mk6195_d05.zip

Restriction Sites: SgfI-MluI

Cloning Scheme:



ACCN: NM_014593

ORF Size: 1968 bp

OTI Disclaimer: The molecular sequence of this clone aligns with the gene accession number as a point of reference only. However, individual transcript sequences of the same gene can differ through naturally occurring variations (e.g. polymorphisms), each with its own valid existence. This clone is substantially in agreement with the reference, but a complete review of all prevailing variants is recommended prior to use. [More info](#)

OTI Annotation: This clone was engineered to express the complete ORF with an expression tag. Expression varies depending on the nature of the gene.

Components: The ORF clone is ion-exchange column purified and shipped in a 2D barcoded Matrix tube containing 10ug of transfection-ready, dried plasmid DNA (reconstitute with 100 ul of water).

Reconstitution Method:

1. Centrifuge at 5,000xg for 5min.
2. Carefully open the tube and add 100ul of sterile water to dissolve the DNA.
3. Close the tube and incubate for 10 minutes at room temperature.
4. Briefly vortex the tube and then do a quick spin (less than 5000xg) to concentrate the liquid at the bottom.
5. Store the suspended plasmid at -20°C. The DNA is stable for at least one year from date of shipping when stored at -20°C.

RefSeq: [NM_014593.3](#)

RefSeq Size: 2964 bp

RefSeq ORF: 1971 bp

Locus ID: 30827

UniProt ID: [Q9P0U4](#)

Cytogenetics: 18q21.1

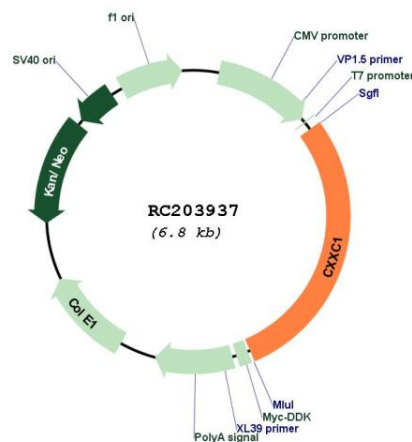
Domains: PHD, zf-CXXC

Protein Families: Druggable Genome, Transcription Factors

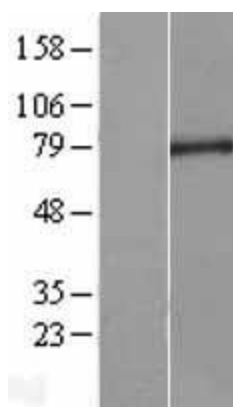
MW: 75.7 kDa

Gene Summary: This gene encodes a protein that functions as a transcriptional activator that binds specifically to non-methylated CpG motifs through its CXXC domain. The protein is a component of the SETD1 complex, regulates gene expression and is essential for vertebrate development. [provided by RefSeq, Sep 2015]

Product images:



Circular map for RC203937



Western blot validation of overexpression lysate (Cat# [LY402351]) using anti-DDK antibody (Cat# [TA50011-100]). Left: Cell lysates from untransfected HEK293T cells; Right: Cell lysates from HEK293T cells transfected with RC203937 using transfection reagent MegaTran 2.0 (Cat# [TT210002]).