

## Product datasheet for **RC203933**

### C12orf23 (TMEM263) (NM\_152261) Human Tagged ORF Clone

#### Product data:

Product Type:	Expression Plasmids
Product Name:	C12orf23 (TMEM263) (NM_152261) Human Tagged ORF Clone
Tag:	Myc-DDK
Symbol:	C12orf23
Synonyms:	C12orf23
Mammalian Cell Selection:	Neomycin
Vector:	pCMV6-Entry (PS100001)
E. coli Selection:	Kanamycin (25 ug/mL)
ORF Nucleotide Sequence:	>RC203933 ORF sequence Red=Cloning site Blue=ORF Green=Tags(s)

TTTTGTAATACGACTCACTATAGGGCGGCCGGAATTCGTCGACTGGATCCGGTACCGAGGAGATCTGCC  
GCC**CGATCGCC**

ATGAATCAGACAGATAAAAAATCAACAAGAAATCCCATCATACCTTAATGATGAACCACCAGAAGTTCAA  
TGAAAGATCACCCACAGCAGCAGCCAGGCATGTTGTCCCGTGTGACTGGGGTATCTTCAGTGTACAAA  
GGGAGCTGTTGGTGCCACCATTGGTGGTGTGGCTTGGATTGGTGGAAAGAGTCTGGAAGTGACAAAACA  
GCTGTTACAACTGTGCCTCCATGGGAATAGGGCTGGTAAAAGGGGTGTCTCTGCTGTGGCTGGAGGTG  
TTACAGCTGTTGGTCTGCTGTTGTAACAAAGTGCCCTAACAGGAAAGAAGAAAGACAAATCTGAC

**ACGCGT**ACGCGGCCGCTCGAGCAGAAACTCATCTCAGAAGAGGATCTGGCAGCAAATGATATCCTGGATT  
ACAAGGATGACGACGATAAGGTTTAA

Protein Sequence:	>RC203933 protein sequence Red=Cloning site Green=Tags(s)
-------------------	--

MNQTDKNQQEIPSYLNDEPPEGSMKDHPPQQPGMLSRVTGGIFSVTKGAVGATIGGVAVIGGKSLEVTKT  
AVTTVPSMGIKLVKGGVSAVAGGVTAVGSAVNVKPLTGKKKDKSD

**TR**TRPLEQKLISEEDLAANDILDYKDDDDKV

Chromatograms: [https://cdn.origene.com/chromatograms/mk6310\\_e12.zip](https://cdn.origene.com/chromatograms/mk6310_e12.zip)

Restriction Sites: SgfI-MluI

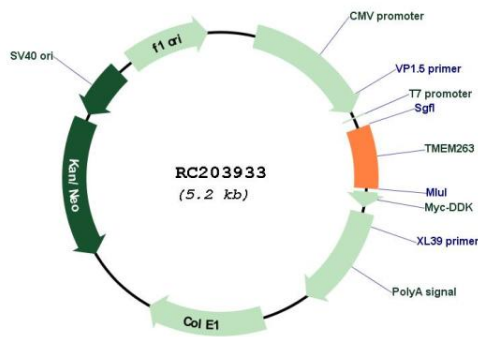


[View online »](#)

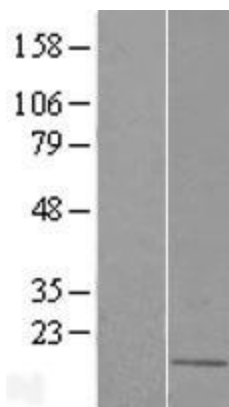


UniProt ID: [Q8WUH6](#)  
 Cytogenetics: 12q23.3  
 Protein Families: Transmembrane  
 MW: 11.7 kDa

**Product images:**



Circular map for RC203933



Western blot validation of overexpression lysate (Cat# [LY407684]) using anti-DDK antibody (Cat# [TA50011-100]). Left: Cell lysates from untransfected HEK293T cells; Right: Cell lysates from HEK293T cells transfected with RC203933 using transfection reagent MegaTran 2.0 (Cat# [TT210002]).



Coomassie blue staining of purified TMEM263 protein (Cat# [TP303933]). The protein was produced from HEK293T cells transfected with TMEM263 cDNA clone (Cat# RC203933) using MegaTran 2.0 (Cat# [TT210002]).