

Product datasheet for RC203932

MAD2L2 (NM_006341) Human Tagged ORF Clone

Product data:

Product Type:	Expression Plasmids
Product Name:	MAD2L2 (NM_006341) Human Tagged ORF Clone
Tag:	Myc-DDK
Symbol:	MAD2L2
Synonyms:	FANCV; MAD2B; POLZ2; REV7
Mammalian Cell Selection:	Neomycin
Vector:	pCMV6-Entry (PS100001)
E. coli Selection:	Kanamycin (25 ug/mL)
ORF Nucleotide Sequence:	>RC203932 ORF sequence Red=Cloning site Blue=ORF Green=Tags(s)

TTTTGTAATACGACTCACTATAGGGCGCCGGGAATTCGTCGACTGGATCCGGTACCGAGGAGATCTGCC
GCC**CGATCGCC**

ATGACCACGCTCACACGACAAGACCTCAACTTTGGCCAAGTGGTGGCCGATGTGCTCTGCGAGTTCCTGG
AGGTGGCTGTGCATCTCATCTCTACGTGCGCGAGGTCTACCCCGTGGGCATCTCCAGAAACGCAAGAA
GTACAACGTGCCGGTCCAGATGTCCTGCCACCCGGAGCTGAATCAGTATATCCAGGACACGCTGCACTGC
GTCAAGCCACTCCTGGAGAAGAATGATGTGGAGAAAGTGGTGGTGGTATTTGGATAAAGAGCACCGCC
CAGTGGAGAAATTCGTCTTTGAGATCACCCAGCCTCCACTGCTGTCCATCAGCTCAGACTCGCTGTTGTC
TCATGTGGAGCAGCTGTCGGGCTTCATCCTGAAGATCAGCGTGTGCGATGCCGTCTGGACCACAAC
CCCCCAGGCTGTACCTTCACAGTCTGGTGCACACGAGAGAAGCCGCCACTCGCAACATGGAGAAGATCC
AGGTCAACAAGGATTTCCCTGGATCCTGGCGGATGAGCAGGATGTCCACATGCATGACCCCCGGCTGAT
ACCCTAAAAACCATGACGTCGGACATTTAAAGATGCAGCTTTACGTGGAAGAGCGCGCTCATAAAGGC
AGC

ACGCGTACGCGGCGCTCGAGCAGAACTCATCTCAGAAGAGGATCTGGCAGCAATGATATCCTGGATT
ACAAGGATGACGACGATAAGGTTTAA



[View online »](#)

Protein Sequence: >RC203932 protein sequence
Red=Cloning site Green=Tags(s)

MTTLTRQDLNFGQVVADVLCFLEVAVHLILYVREYVPGIFQKRKKYNVPVQMSCHPELNQYIQDTLHC
 VKPLLEKNDVEKVVVVILDKHRPVEKFVFEITQPPLLSISSDSSLSHVEQLLRAFILKISVCDAVLDHN
 PPGCTFTVLVHTREAATRNMKIQVIKDFPWILADEQDVHMHDPRLIPLKTMSTDILKMQLYVEERAHKG
 S

TRTRPLEQKLISEEDLAANDILDYKDDDDKV

Chromatograms: https://cdn.origene.com/chromatograms/mk6012_e06.zip

Restriction Sites: SgfI-MluI

Cloning Scheme:



ACCN: NM_006341

ORF Size: 633 bp

OTI Disclaimer: The molecular sequence of this clone aligns with the gene accession number as a point of reference only. However, individual transcript sequences of the same gene can differ through naturally occurring variations (e.g. polymorphisms), each with its own valid existence. This clone is substantially in agreement with the reference, but a complete review of all prevailing variants is recommended prior to use. [More info](#)

OTI Annotation: This clone was engineered to express the complete ORF with an expression tag. Expression varies depending on the nature of the gene.

Components: The ORF clone is ion-exchange column purified and shipped in a 2D barcoded Matrix tube containing 10ug of transfection-ready, dried plasmid DNA (reconstitute with 100 ul of water).

Reconstitution Method:

1. Centrifuge at 5,000xg for 5min.
2. Carefully open the tube and add 100ul of sterile water to dissolve the DNA.
3. Close the tube and incubate for 10 minutes at room temperature.
4. Briefly vortex the tube and then do a quick spin (less than 5000xg) to concentrate the liquid at the bottom.
5. Store the suspended plasmid at -20°C. The DNA is stable for at least one year from date of shipping when stored at -20°C.

Note: Plasmids are not sterile. For experiments where strict sterility is required, filtration with 0.22um filter is required.

RefSeq: [NM_006341.4](#)

RefSeq Size: 1163 bp

RefSeq ORF: 636 bp

Locus ID: 10459

UniProt ID: [Q9UI95](#)

Cytogenetics: 1p36.22

Domains: HORMA

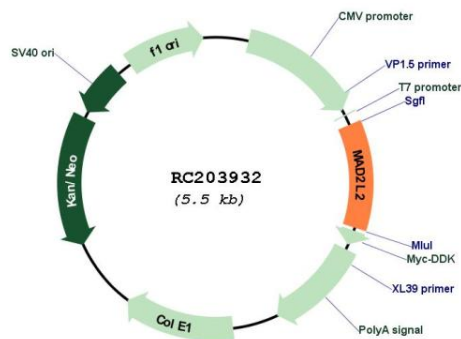
Protein Families: Druggable Genome

Protein Pathways: Cell cycle, Oocyte meiosis, Progesterone-mediated oocyte maturation

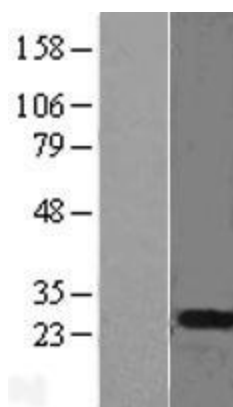
MW: 24.3 kDa

Gene Summary: The protein encoded by this gene is a component of the mitotic spindle assembly checkpoint that prevents the onset of anaphase until all chromosomes are properly aligned at the metaphase plate. The encoded protein, which is similar to MAD2L1, is capable of interacting with ADAM9, ADAM15, REV1, and REV3 proteins. [provided by RefSeq, Jul 2008]

Product images:



Circular map for RC203932



Western blot validation of overexpression lysate (Cat# [LY426747]) using anti-DDK antibody (Cat# [TA50011-100]). Left: Cell lysates from untransfected HEK293T cells; Right: Cell lysates from HEK293T cells transfected with [RC225253] using transfection reagent MegaTran 2.0 (Cat# [TT210002]).