

Product datasheet for RC203930

PHLPP (PHLPP1) (NM_194449) Human Tagged ORF Clone

Product data:

Product Type:	Expression Plasmids
Product Name:	PHLPP (PHLPP1) (NM_194449) Human Tagged ORF Clone
Tag:	Myc-DDK
Symbol:	PHLPP
Synonyms:	PHLPP; PLEKHE1; PPM3A; SCOP
Mammalian Cell Selection:	Neomycin
Vector:	pCMV6-Entry (PS100001)
E. coli Selection:	Kanamycin (25 ug/mL)
ORF Nucleotide Sequence:	>RC203930 representing NM_194449 Red=Cloning site Blue=ORF Green=Tags(s)

TTTTGTAATACGACTCACTATAGGGCGGCCGGAATTCGTCGACTGGATCCGGTACCGAGGAGATCTGCC
GCC**CGATCGCC**

ATGGACTCGGAGATTGGCTGCCTCATCCGTTCTATGCAGGAAAACCTCACAGCACGGGTAGCTCTGAAC
GGATTCAGCTCTCAGGAATGTATAATGTCCGTAAGGCAAGATGCAGTTGCCAGTGAACCGATGGACAAG
ACGCCAAGTCATCCTATGTGGACCTGCCTGATAGTATCATCTGTGAAAGACAGCTTGACCGAAAAGATG
CATGTTCTGCCACTAATTGGTGGAAAAGTAGAAGAAGTAAAAAGCACCAACACTGTTTAGCATTTAGCT
CCTCTGGACCCCAAAGCCAGACTTACTACATTTGCTTTGATACTTTCACAGAATACTTAAGTGGCTGCG
ACAAGTCTCCAAGTTGCATCCCAGCGCATTAGCTCAGTGGACCTCTCGTGTGTAGCCTGGAACATCTG
CCTGCCAACCTCTTCTACAGCCAAGACCTCACTCATCTCAATTTAAAAACAAAACCTCCTAAGGCAGAACC
CTAGCCTTCCAGCTGCCAGGGGGCTTAATGAACTGCAAAGGTTCCCAAGTTGAAGAGTCTTAACCTTTC
CAATAATCATTAGGGGACTTCCCTCTGGCAGTCTGCAGTATTCACCCCTGGCAGAGCTGAACGTGTCC
TGCAATGCCCTGCGATCAGTCCCAGCGCCGTTGGAGTGTGCACAACCTTACAGACATTTTTGTTGGATG
GAACTTTCTCCAATCCCTTCTGCTGAGTTGGAGAACATGAAGCAGCTTAGTTATCTGGGTCTTTCTTT
CAATGAATTTACTGACATTCGGAAGTATTGGAGAAAATGACTGCTGTGGATAAACTTTGTATGTCTGGA
AACTGTGTGGAGACCCTTAGGCTACAGGCTTTAAGAAAAATGCCTCACATTAACATGTGGATCTAAGGT
TGAACGTAATTAGGAAGCTGATAGCAGATGAAGTGGACTTTCTACAGCATGTTACTCAGCTTGACCTACG
AGACAATAAGCTTGGTGTCTAGATGCTATGATTTTCAACAACATTGAAGTTTTACTGTGAAAGGAAT
CAACTGGTCACATTAGACATCTGTGGCTATTTCTAAAAGCGCTCTATGCCTCTTCTAATGAACTGTTC
AACTTGATGTTTACCCAGTTCCAAATTATCTGTCTACATGGATGTTTCAAGGAACCGCTTAGAAAAATGT
GCCTGAGTGGGTATGTGAAAGCCGAAAGCTAGAAGTTTTGGATATTGGCCATAATCAAATATGTGAACTT
CCTGCCCGCTTATTTGTAATAGCAGTCTCCGAAAACCTACTGGCAGGACACAACCCAGTTGGCAAGGCTGC
CTGAAAGGCTAGAAAGAACCTCGGTGGAGGCTTGGATGTGCAACACAACCAGCTCCTTGAGCTCCCACC
TAACCTTCTGATGAAGGCTGACAGCCTGAGATTCTGAACGCCTCTGCGAACAACTGAAAGCCTTCTCT



[View online »](#)

CCAGCCACGCTTTCCGAAGAGACAAACAGTATCTTACAAGAGTTGTATTTGACAAATAACAGCCTCACAG
ACAAATGTGTGCCCTTGTTAACGGGACACCCCCATTTGAAGATCCTTCACATGGCCTATAACCGACTTCA
GAGTTTTCCAGCAAGTAAATGGCGAACTGGAGGAATTGAAGAAATGATCTCAGTGGGAATAAGCTG
AAAGCCATCCCAACAACGATCATGAATTGCAGGCGCATGCACACCGTGATTGCTCACTCCAACTGCATCG
AGGTCTTTCCGAAGTTATGCAGCTCCCAGAGATCAAGTGTGTGGACCTGAGCTGTAATGAGCTAAGTGA
AGTCACATTACCAGAAAACCTGCCTCCAACTGCAGGAGCTAGACCTGACTGGAACCCCGCCTTGTC
CTTGATCACAAAACCTGGAACACTGAATAATATCCGCTGTTTCAAGATTGATCAGCCTTCTACAGGAG
ACGCTTCCGGAGCCCCAGCTGTATGGAGTCATGGTTACACTGAAGCTTCGGGGTAAAAACAAGTTGTG
TGTGCGAGCCCTGTCGGTGAATAACTTCTGTGACAACCGGAAGCCCTGTATGGTGTGTTTGACGGAGAC
CGGAATGTGGAGGTGCCCTACCTTCTCCAGTGCATATGAGTGACATTTTGGCTGAAGAGCTGCAAAAA
CAAAAAACGAAGAAGAATACATGGTCAATACATTCATTGTGATGCAAAAGGAACTTGAAGTGTGGGCA
GAAGCTTGGTGGTCCGCTGTCTTTGTCATATCAAGCATGACCCTGTGGATCCAGGAGGATCCTTACC
TTGACCTGTCTAATGTGGCAAGTGCCAAACAGTTCTCTGTGCAAAATGGAAAGCCGCTGCCTGTGCCA
GATCTTACATCATGAGCTGTGAAGAAGAGCTGAAGAGGATTAACAGCACAAAGGCCATTACTAGAGGA
TGGAAGGTGAACGGAGTACTGAGTCCACGCGCATCCTGGGCTACACCTTCTCCATCCCAGTGTGGT
CCTCGCCCCACGTGCAGTCCGTCTCCTGACTCCCAGGATGAGTTCTTCATCCTAGGCAGTAAGGGT
TGTGGGACAGCCTGTCCGTGAGGAGGCGTGGAAAGCCGTGCGCAACGTGCCCGATGCCCTGGTGTCTGC
CAAGAAGCTGTGTACCCTGGCCAGAGCTACGGCTGCCACGACAGCATCAGCGCTGTGGTGGTGCAGCTC
AGTGTCACTGAGGACAGCTTCTGCTGTGCGAGCTCAGCGCCGGTGGGGCTGTGCCACCACCCAGTCTG
GCATCTTCTCCCTCAGTGAACATGGTGTCAAGGATCGGCCCTCAGATGGGCTGGGCGTGGCCTCTC
CAGCAGCGCATGGCTTCCGAGATTAGCAGTGAGCTCTCCACTTCTGAGATGAGCAGCGAGGTGGGTCA
ACAGCTCCGATGAGCCCCGCGGAGCCCTAAGCGAGAACAGCCCTGCCTACCCAGTGAAGCAGCGCT
GCATGCTCCACCCATCTGTCTGTCCAACCTCTCCAGCGCCAGCTATCCAGCGCCAGTCTCTAGCGC
CTTCTCCGACAACGGCCTTGACAGTGACGATGAGGAGCCATCGAGGGCGTCTTACCAACGGCAGCCGG
GTGGAGGTGGAGGTGGACATCCACTGCAGCCGGGCAAGGAGAAGGAGAAACAGCAGCACCTGTTCAAG
TGCCAGCAGAGGCCAGTGTGAGGGCATTGTGATCAGCGCAACGAGGATGAGCCAGGTCTGCCAGGAA
GGCAGACTTCTGCGCTGGGACCATTGGGCGCCGAGGGCCAATGGCTCTGTTGCGCCCCAGGAAAGG
AGCCACAATGTGATAGAGGTGGCTACAGACGCACCTCTTCGAAAGCCTGGAGGCTATTTTGTGCCCGG
CTCAGCCGATCCTGATGATCAGTTTATCATACCCCGGAGCTGGAAGAGGAGGTCAAAGAAATCATGAA
GCATCACCAGGAGCAACAGCAGCAGCAGCAGCCGCCACCACCCCTCAGCTCCAGCCGAGCTGCCCGG
CACTACCAGCTGGACCAGCTGCCAGATTATTACGACACGCCACTA

ACGCGTACGCGGCGCTCGAGCAGAACTCATCTCAGAAGAGGATCTGGCAGCAAATGATATCCTGGATT
ACAAGGATGACGACGATAAGGTTAA

Protein Sequence: >RC203930 representing NM_194449
 Red=Cloning site Green=Tags(s)

```

MDSEIGCLIRFYAGKPHSTGSSERIQLSGMYNVRKGMQLPVNRWTRRQVILCGTCLIVSSVKDSLTKGM
HVLPLIGKVEEVKKHQHCLAFSSSGPQSQTYYICFDTFTEYLRWLRQVSKVASQRISVDLSCCSLEHL
PANLFYSQDLTHLNLKQNFRLRQNP SLPAARGLNELQRFTKLKSLNLSNNHLDGDFPLAVCSIPTLAELNVS
CNALRSVPAAVGVMHNLQTFLLDGNFLQSLPAELENMKQLSYLGLSFNEFTDIPEVLEKLTAVDKLCMSG
NCVETLRLQALRKMPHIKHVDLRLNVIRKLIADVDLFLQHVTLQDLRDNKLGDL DAMIFNNIEVLHCERN
QLVTLDCGYFLKALYASSNELVQLDVYPVPNYLSYMDVSRNRENVPEWVCE SRKLEVLDI GHNQICEL
PARLFCNSSLRKL LAGHNQLARLPERLERTSVEVLDVQHNQLLELPPNLLMKADSLRFLNASANKLES LP
PATLSEETNSILQELYL TNNSLTDKCVPLL TGHPHLKI LHMAYNRLQSFPA SKMAKLEEEIDLSGNKL
KAIPPTIMNCRRMHTVIAHSNCIEVFPEVMQLPEIKCVLSCNELSEVTLPENLPPKQLQELDLTGNPRLV
LDHKTLELLNNIRCFKIDQPSTGDASGAPAVWSHGYTEASGVKNKLCVAALSVNNFCDNREALYGVFDGD
RNVVEPYLLQCTMSDILAEELQTKNEEYMVNTFIVMQRKLGTAGQKLGAAVLCHIKHDPVDPGGSFT
LTSANVGKQTVLCRNGKPLPLRSYIMSCEEELKRIKQHKAIITEDGK VNGVTESTRILGYTFLHPSVV
PRPHVQSVLLTPQDEFFILGSKGLWDSLVEEAVEAVRNVPDALAAAKKLCTLAQSYGCHDSISAVVVQL
SVTEDSFCCCEL SAGGAVPPPSPGIFPPSVNMV I KDRPSDGLGVPSSSSGMASEI SSELSTSEMSSEVGS
TASDEPPPGALSENSPAYPSEQRCMLHPICLSNSFQRQLSSATFSSAFSDNGLDSDDEEPIEGVFTNGSR
VEVEVDIHCSRAKEKEKQQLLQVPAEASDEGIVISANEDEPGLPRKADFSAVGTIGRRRANGSVAPQER
SHNVIEVATDAPLRKPGGYAAPAQDPDDQFIIPPELEEEVKEIMKHHQEQQQQQPPPPQLQPQLPR
HYQLDQLPDYYDTPL
  
```

TRTRPLEQKLISEEDLAANDILDYKDDDDKV

Chromatograms: https://cdn.origene.com/chromatograms/mg2859_g01.zip

Restriction Sites: SgfI-MluI

Cloning Scheme:

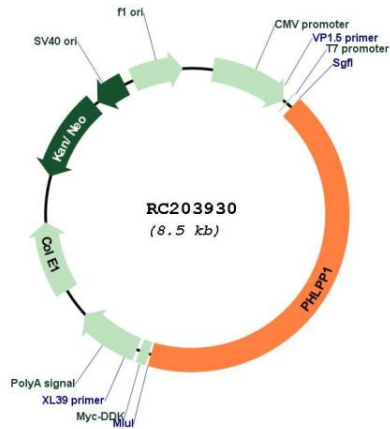


ACCN: NM_194449

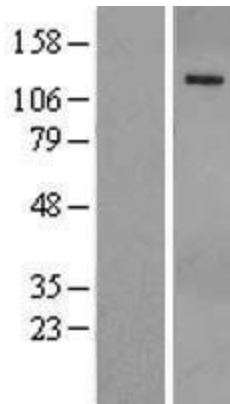
ORF Size: 3615 bp

OTI Disclaimer:	The molecular sequence of this clone aligns with the gene accession number as a point of reference only. However, individual transcript sequences of the same gene can differ through naturally occurring variations (e.g. polymorphisms), each with its own valid existence. This clone is substantially in agreement with the reference, but a complete review of all prevailing variants is recommended prior to use. More info
OTI Annotation:	This clone was engineered to express the complete ORF with an expression tag. Expression varies depending on the nature of the gene.
Components:	The ORF clone is ion-exchange column purified and shipped in a 2D barcoded Matrix tube containing 10ug of transfection-ready, dried plasmid DNA (reconstitute with 100 ul of water).
Reconstitution Method:	<ol style="list-style-type: none">1. Centrifuge at 5,000xg for 5min.2. Carefully open the tube and add 100ul of sterile water to dissolve the DNA.3. Close the tube and incubate for 10 minutes at room temperature.4. Briefly vortex the tube and then do a quick spin (less than 5000xg) to concentrate the liquid at the bottom.5. Store the suspended plasmid at -20°C. The DNA is stable for at least one year from date of shipping when stored at -20°C.
RefSeq:	NM_194449.1 , NP_919431.1
RefSeq Size:	4798 bp
RefSeq ORF:	5154 bp
Locus ID:	23239
UniProt ID:	O60346
Cytogenetics:	18q21.33
MW:	184.5 kDa
Gene Summary:	This gene encodes a member of the serine/threonine phosphatase family. The encoded protein promotes apoptosis by dephosphorylating and inactivating the serine/threonine kinase Akt, and functions as a tumor suppressor in multiple types of cancer. Increased expression of this gene may also play a role in obesity and type 2 diabetes by interfering with Akt-mediated insulin signaling. [provided by RefSeq, Dec 2011]

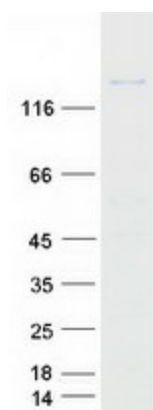
Product images:



Circular map for RC203930



Western blot validation of overexpression lysate (Cat# [LY405134]) using anti-DDK antibody (Cat# [TA50011-100]). Left: Cell lysates from untransfected HEK293T cells; Right: Cell lysates from HEK293T cells transfected with RC203930 using transfection reagent MegaTran 2.0 (Cat# [TT210002]).



Coomassie blue staining of purified PHLPP1 protein (Cat# [TP303930]). The protein was produced from HEK293T cells transfected with PHLPP1 cDNA clone (Cat# RC203930) using MegaTran 2.0 (Cat# [TT210002]).